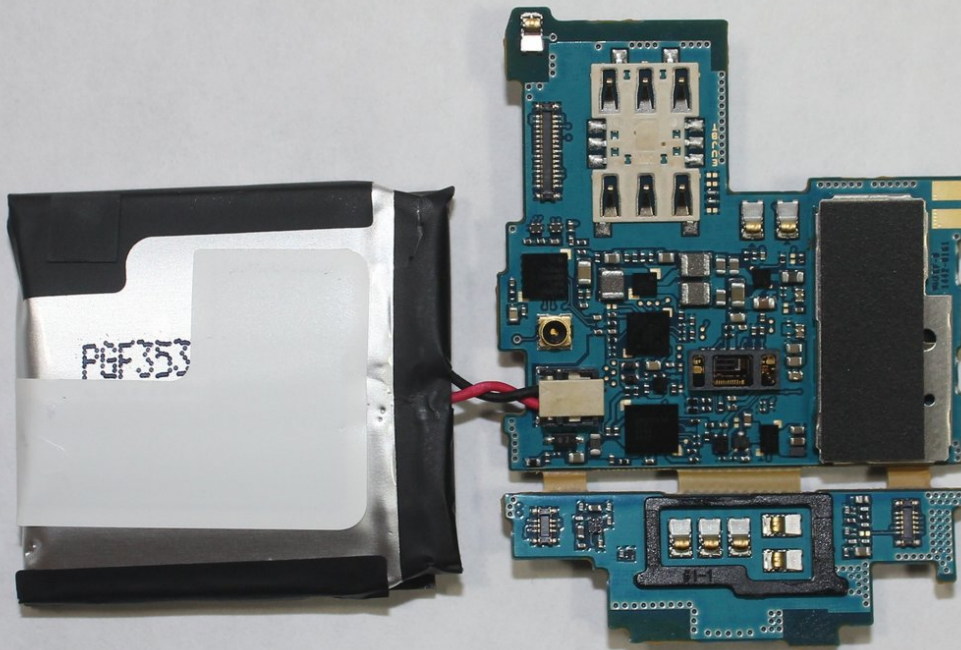




# Samsung Gear S Battery/ Motherboard Replacement

If you want to replace the battery or motherboard, use this guide to replace it.

Written By: Luis Franco



# INTRODUCTION

This guide will give step by step instructions on how to replace the battery and motherboard.



## TOOLS:

- [iFixit Opening Tools](#) (1)
- [Metal Spudger](#) (1)
- [Spudger](#) (1)



## PARTS:

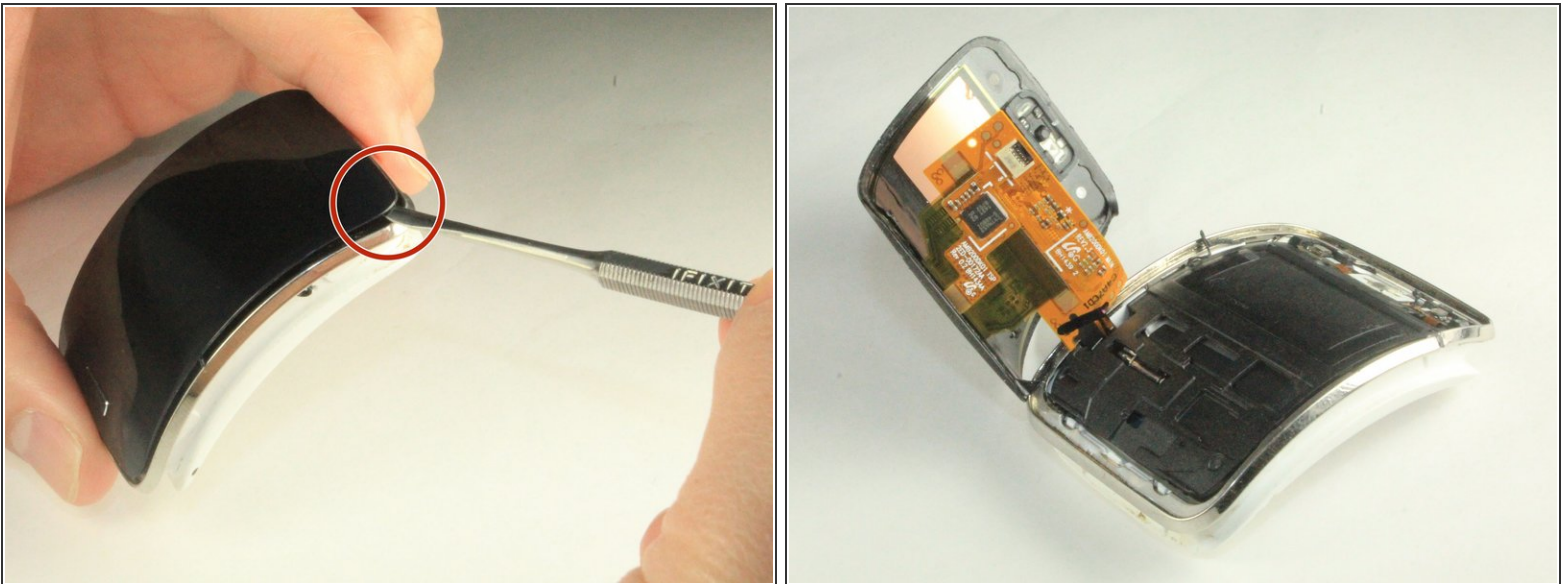
- [Samsung Gear S Replacement Battery](#) (1)

## Step 1 — Display Assembly



- Remove the wrist strap by peeling back the rubber starting from one corner of the watch face. Continue peeling the rubber away from the watch face until the strap is completely off.

## Step 2



- Starting from an edge, wedge a metal spudger in between the screen and the chrome trim ring and pry, lifting the screen outwards.

 Some force is needed due to adhesive seal.

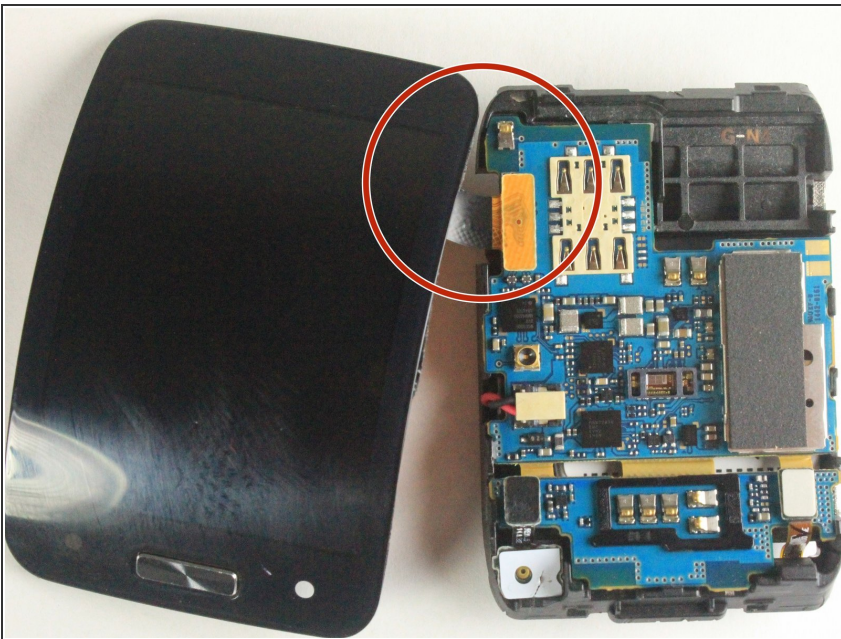


### Step 3



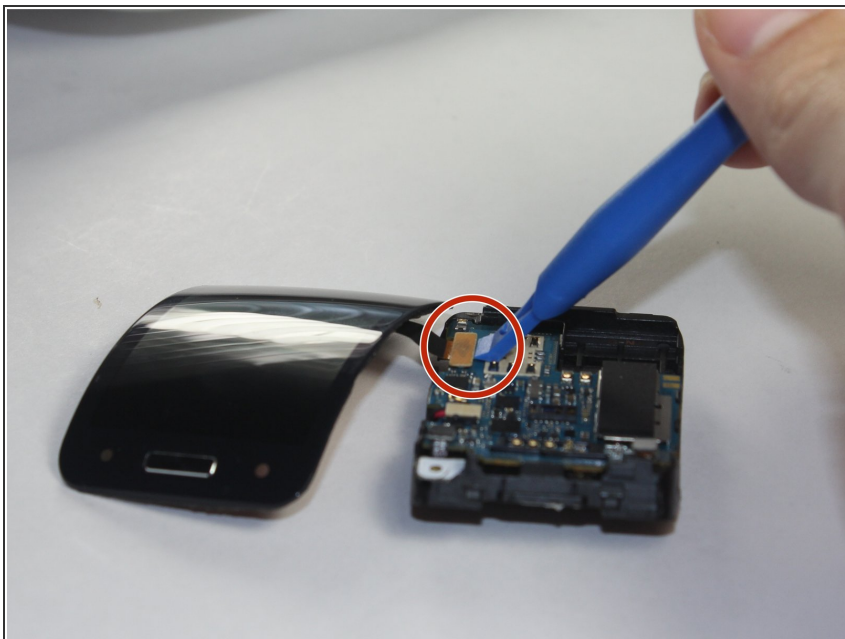
- Use a plastic opening tool to gently pry upwards on the plastic motherboard assembly.

### Step 4



- Locate the ribbon assembly attaching the display to the motherboard.

## Step 5



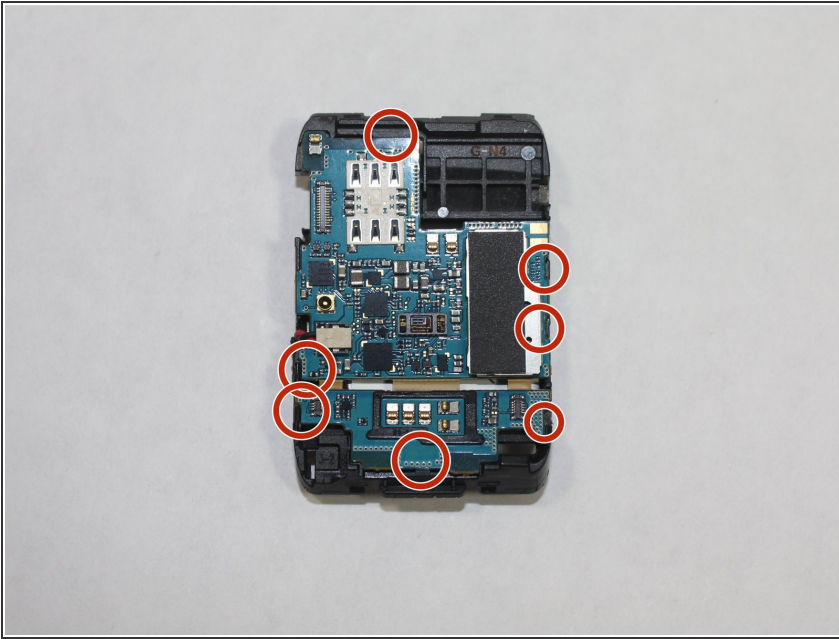
- Use a plastic opening tool to detach the glass screen/ LED Display ribbon connector from the motherboard.

## Step 6



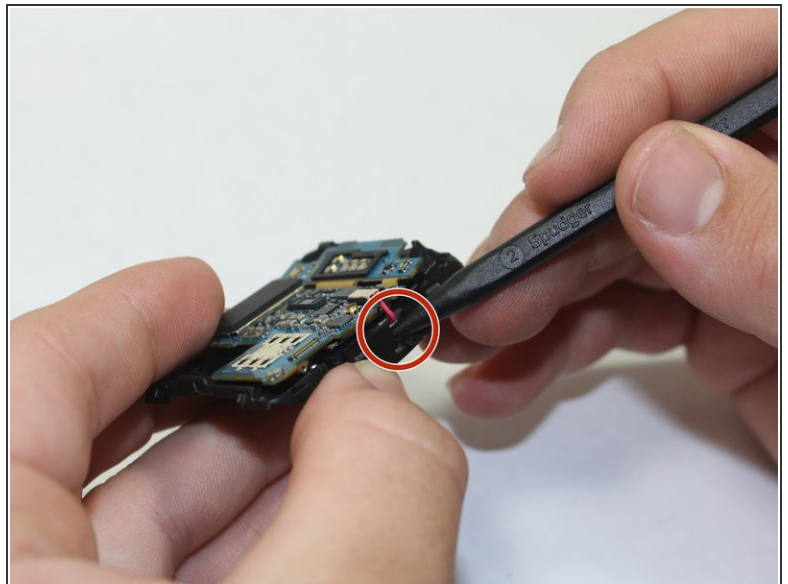
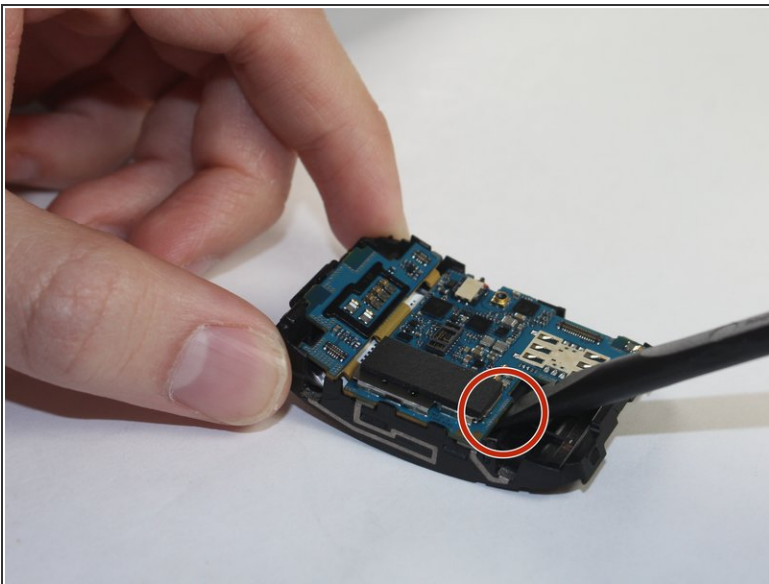
- Now the watch should be in three separate pieces.

## Step 7 — Battery/ Motherboard



- Locate the tabs on the motherboard and unclip them.

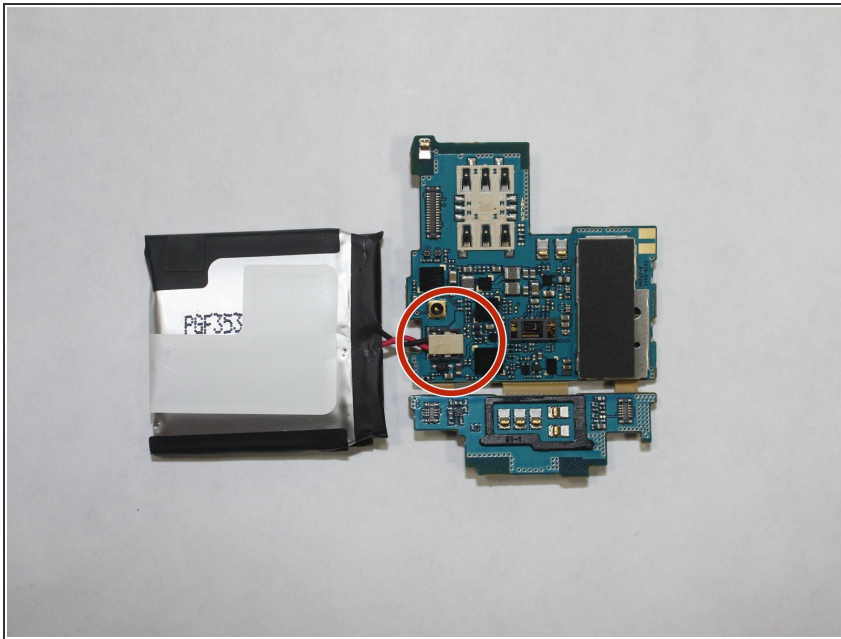
## Step 8



- Use the spudger to gently pry upwards on the motherboard.
- ⓘ If you keep the battery attached to the upper half of the motherboard, you will have to gently pry upwards on both the battery and the motherboard.

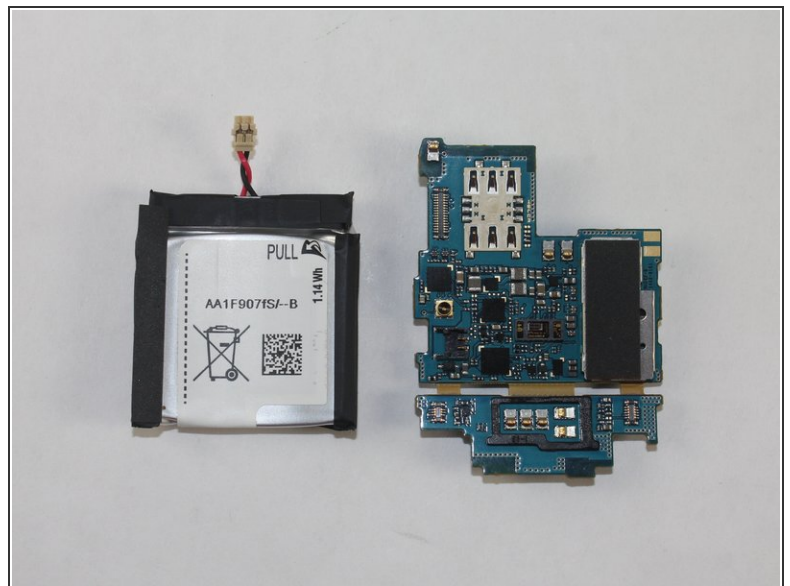
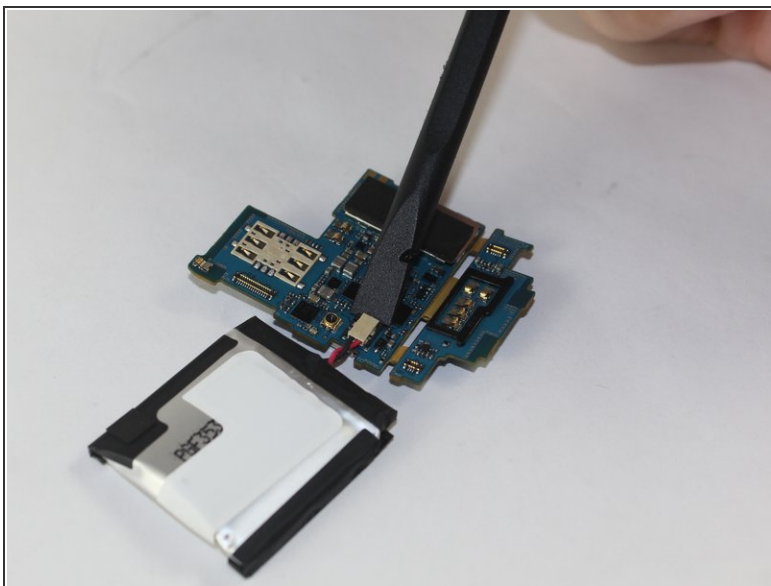


## Step 9



- Once the motherboard and the battery are removed, disconnect the battery at the connector.

## Step 10



- Use a spudger to gently pry upward on the clasp connecting the battery to the motherboard.

To reassemble your device, follow these instructions in reverse order.