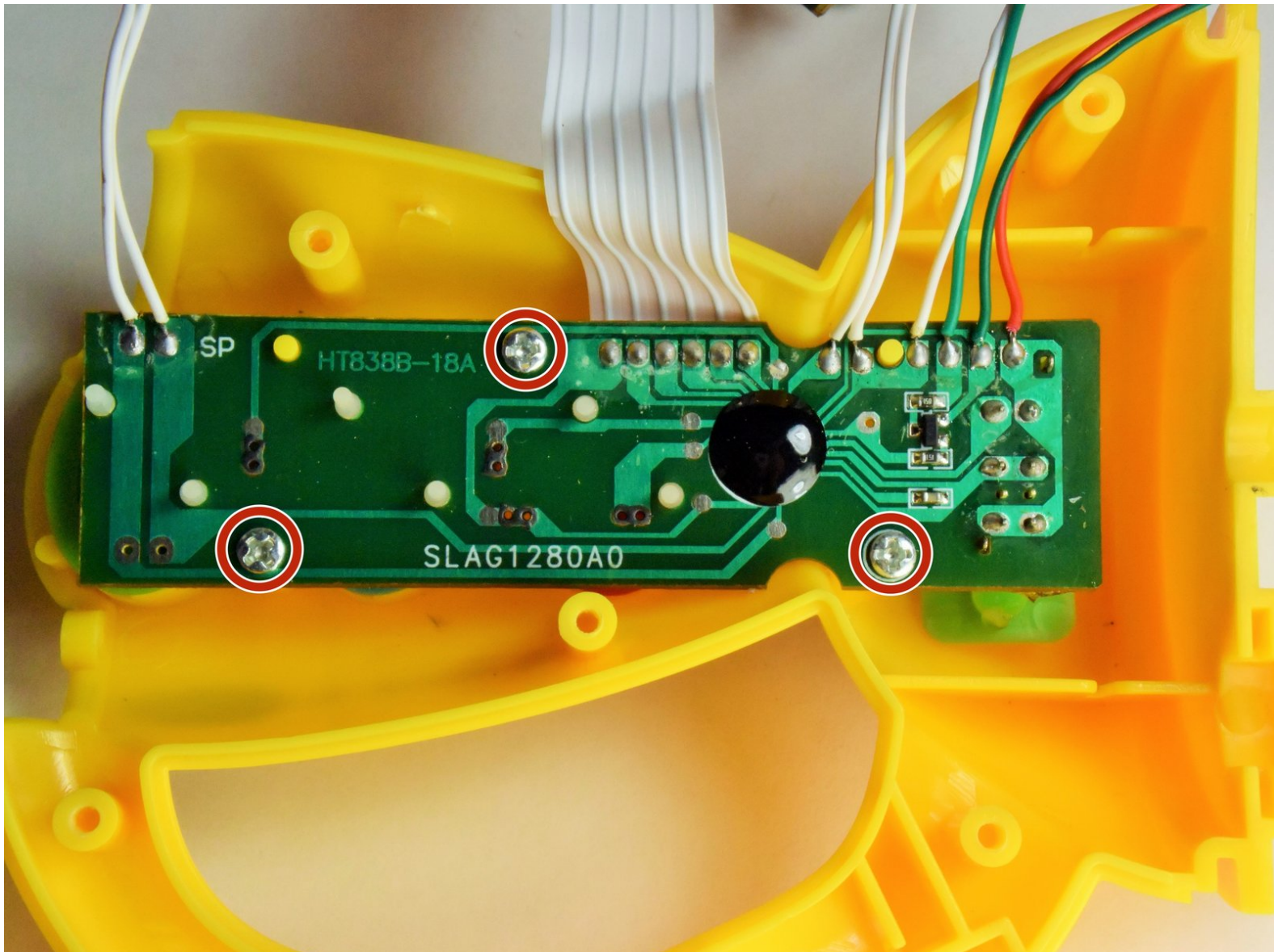




VTech Spin and Learn Color Flashlight Volume Selector Switch Replacement

A guide to removing and replacing the volume selector switch.

Written By: Tess Puhak



INTRODUCTION

The volume selector switch is located between the red ring and number buttons. It has controls the volume, and has three settings: off, soft, and loud.

TOOLS:

- [iFixit Opening Tools](#) (1)
 - [Phillips #0 Screwdriver](#) (1)
 - [Phillips #1 Screwdriver](#) (1)
-

Step 1 — Battery Housing



- Locate the battery housing on the back of the flashlight as pictured.
- Unscrew the single 8 mm Phillips #1 screw.
 - ⓘ The screw will stay attached to the cover that will be removed.
- Lift the battery housing cover to reveal the battery terminals. Remove the batteries.

Step 2 — Speaker Housing



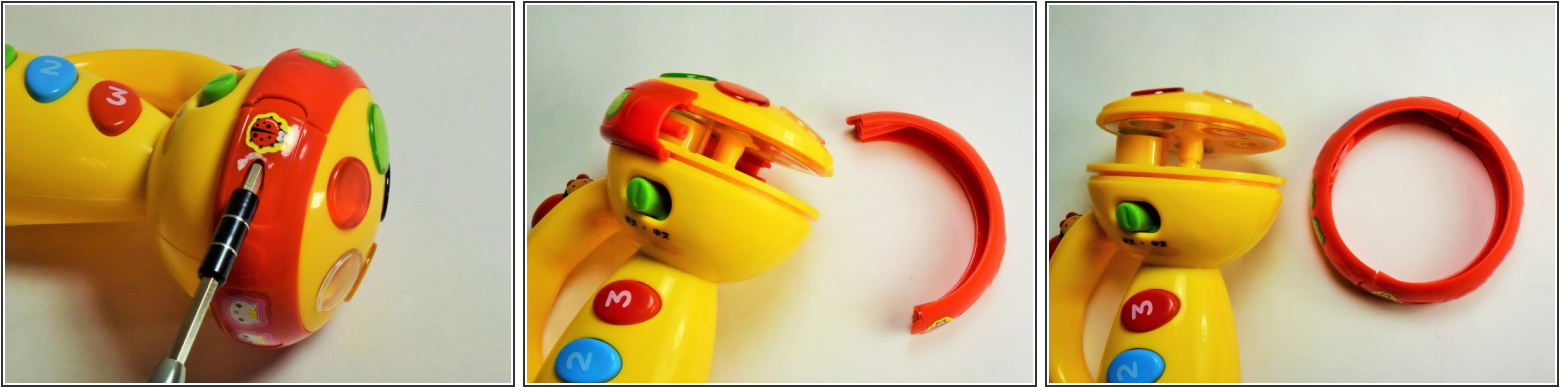
- Locate the light blue speaker housing on the bottom of the flashlight.
- Remove the three 6 mm Phillips #0 screws.
- Once the screws have been removed, pull the housing away from the yellow body of the flashlight. Be careful not to disconnect the white wires from the speaker, unless speaker replacement is required.

Step 3 — Red Ring



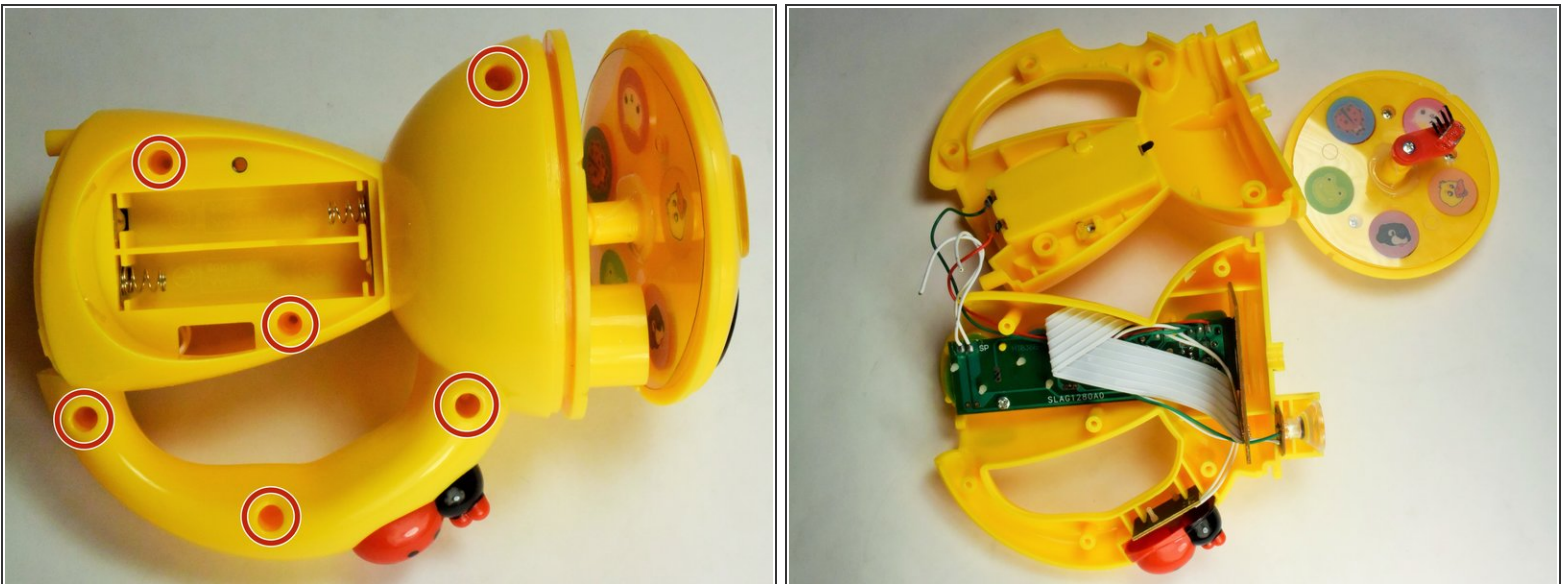
- Locate the screw covering stickers on the side of the red ring. These two stickers will be slightly larger than the normal stickers. In this case it was a ladybug and a duck on opposite sides of the ring.
- With a plastic opening tool, gently remove the stickers by prying around the edges. Be careful with these as you will want to reapply them later

Step 4



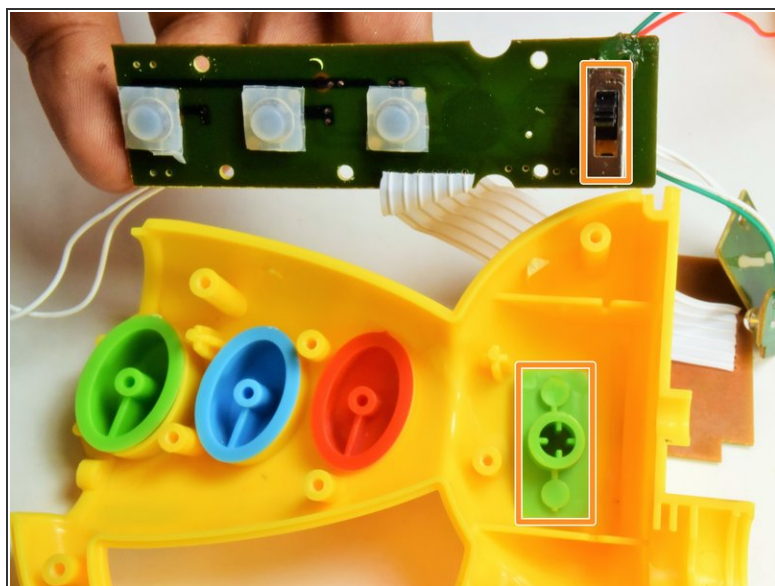
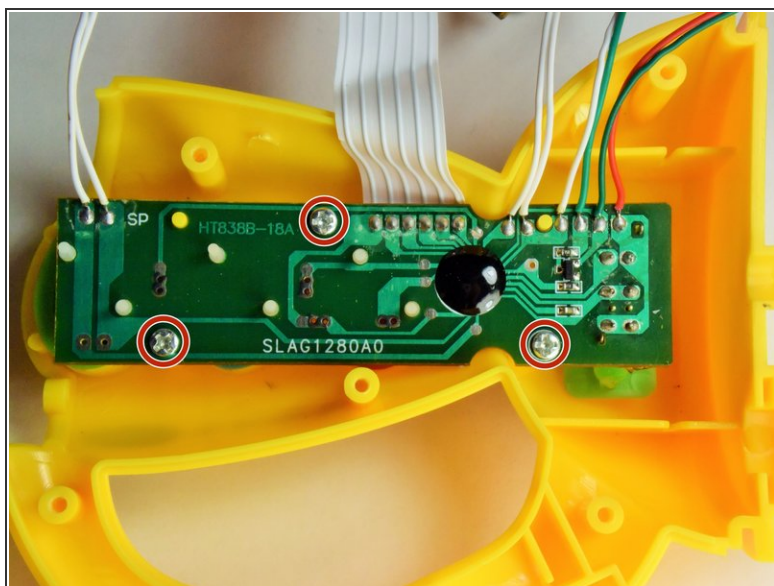
- Remove the two 8mm Phillips #0 screws from the screw channels found under the stickers in step one. This can be seen in the first photo if step 2.
- Once the screws have been successfully removed, grasp one half of the ring and pull gently to separate it from the yellow housing. Repeat on the opposite side and the ring is disassembled.

Step 5 — Main Housing



- Unscrew the six 8 mm Phillips #0 screws at each of the points circled in red in the first image.
- To open, separate the two sides of the housing. They should come apart fairly easily, however you may use a spudger to pry it open. Once it's apart, it should look like the second image.

Step 6 — Volume Selector Switch



- Once the main housing is open, you will have to unscrew the 6 mm Phillips #0 screws from the motherboard to get to the volume selector.
- The Volume Selector is located in the back of the motherboard and sits in the slot as indicated in the 2nd image.

To reassemble your device, follow these instructions in reverse order.