



# HP Envy 14 Screen Replacement

This guide will walk you through 9 easy steps...

Written By: Noelle Ly



# INTRODUCTION

This guide will walk you through 9 easy steps to replace your HP Envy 14 Notebook screen! Before following this guide, you should order and receive the replacement screen and find an open space to work on.

---

## TOOLS:

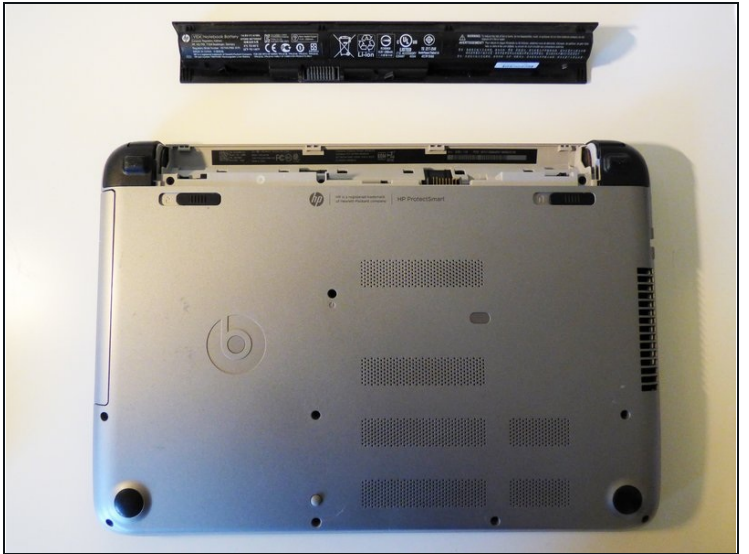
Plastic Cards (1)  
Phillips #00 Screwdriver (1)  
Phillips #000 Screwdriver (1)

## PARTS:

14.0" HD BrightView WLED Screen (1)

---

## Step 1 — Screen



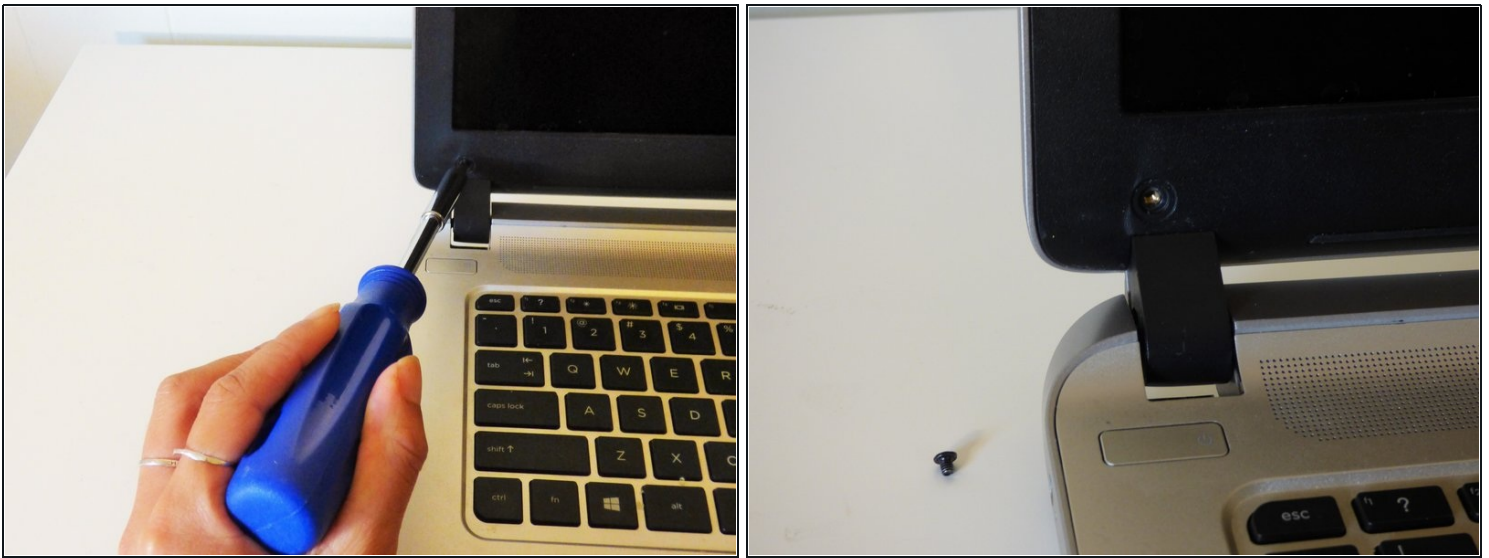
- With your laptop turned off and facing down, locate the battery.
- Slide and hold the black tabs while removing the battery. One of the black tabs may lock in place once slid over.

## Step 2



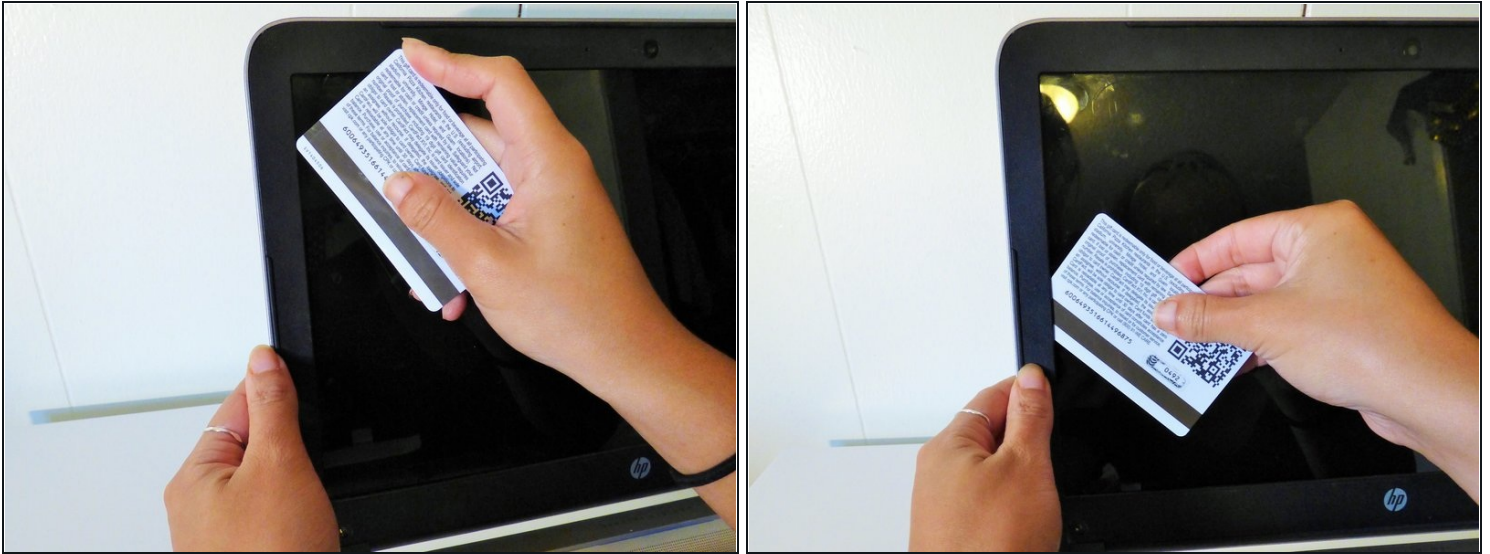
- Flip your laptop back over and open it up.
- ① The black circles are stickers.
- Peel off the 2 black stickers directly above the two hinges to reveal the screws.

## Step 3



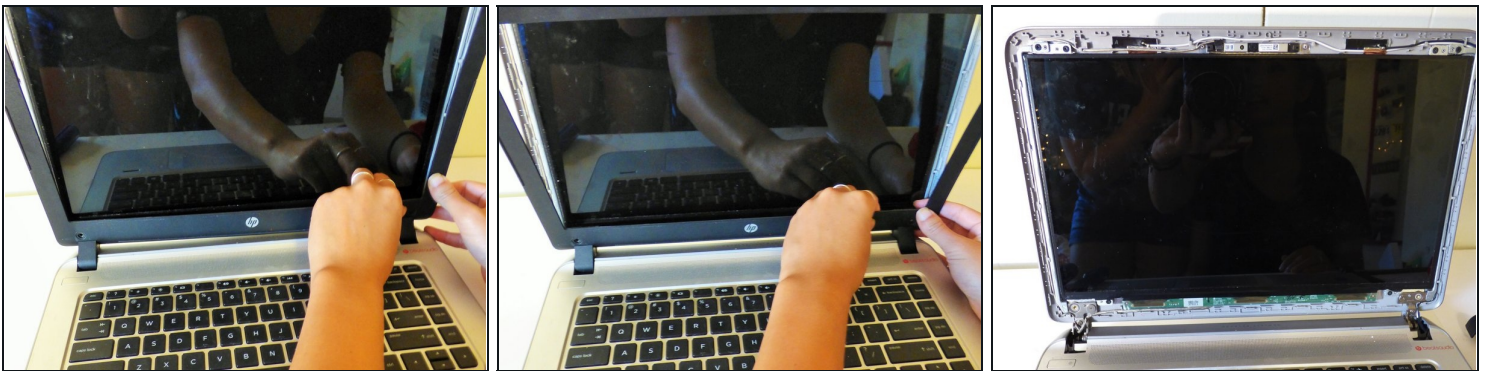
- Use the 4mm Phillips Screwdriver to remove the 2 screws you just uncovered.
- ① Make sure to put the 2 screws in a safe place so that you don't lose them! A small bowl or container would work perfectly.

## Step 4



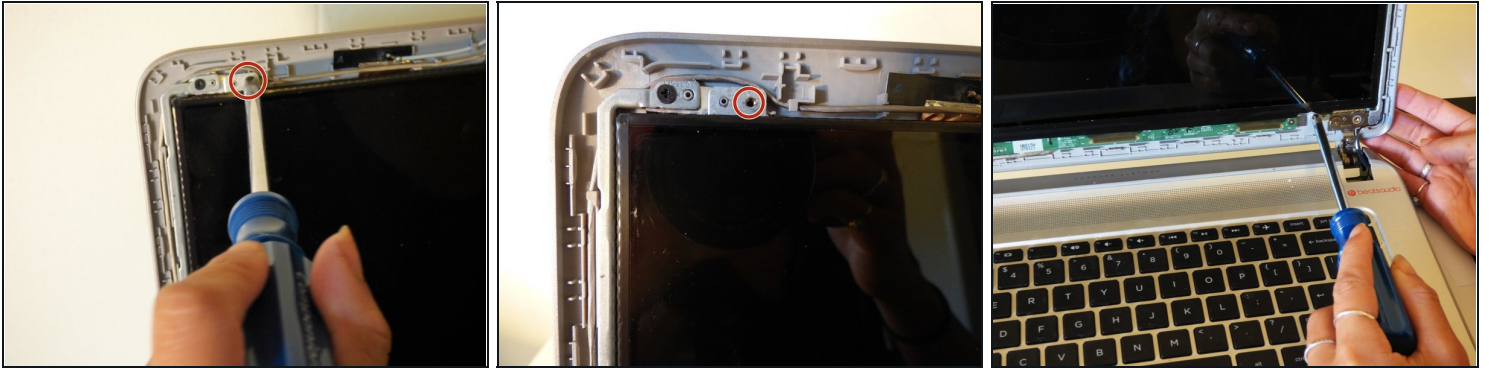
- Use the [plastic card](#) or your fingernail to separate the black plastic border from the screen case.
- ① You will hear a snapping sound but don't worry, you are not breaking the plastic, the border will snap right back into place!

## Step 5



- Separate the border entirely by unsnapping the plastic snaps all the way around the screen until you can remove the border.

## Step 6



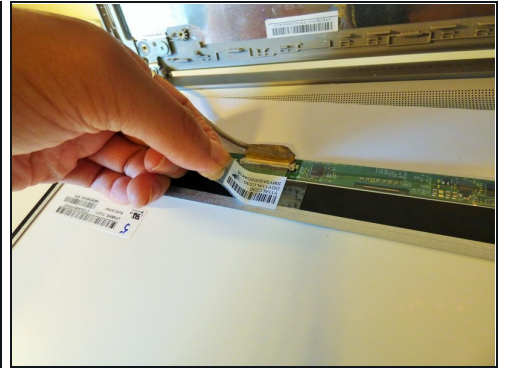
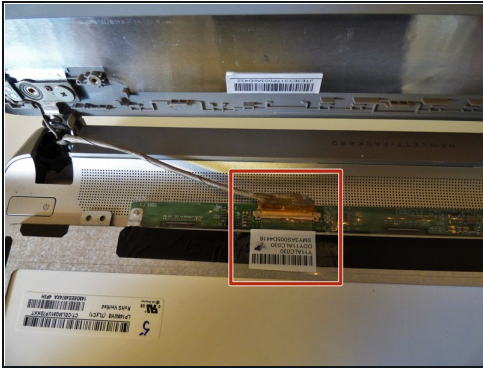
- Use the 3mm Phillips Screwdriver to remove the 4 black screws found on the metal tabs above and below the corners of the screen.
- ① Don't get confused with the other black screws on the top corners. The ones you want to remove are located closer to the middle of the screen.
- ① Lean the laptop cover back and unscrew the bottom 2 screws first so that the screen doesn't fall over as you are removing the screws.
- ① Put these 4 screws in a separate container so they do not get mixed up with the 2 screws you already removed.

## Step 7



- Now that the screen is not screwed in, place it face down on the keyboard.

## Step 8



- Gently peel off the bar code sticker that is connected to the video cable connector.

## Step 9



- Remove the video cable from the connector by gently pulling the gray tab out.

---

To reassemble your device, follow these instructions in reverse order.