



Philips Norelco Shaver Head Blade Replacement

This guide will demonstrate how to replace the shaver head blades for Philips Norelco Face Shavers with the three blade head design.

Written By: Austin Fisher



INTRODUCTION

If you have a Philips Norleco face shaver and are noticing that it is becoming less effective, you may need to replace the shaving head blades with new ones. These heads contain small blades that dull over time. Philips Norelco recommends they be replaced every 12 months. In this guide I will show you how to install your new replacement blades.



TOOLS:

- [Utility Scissors](#) (1)



PARTS:

- [Philips Norelco Replacement Shaver Head Blades](#) (1)

Step 1 — Philips Norelco Shaver Head Blade



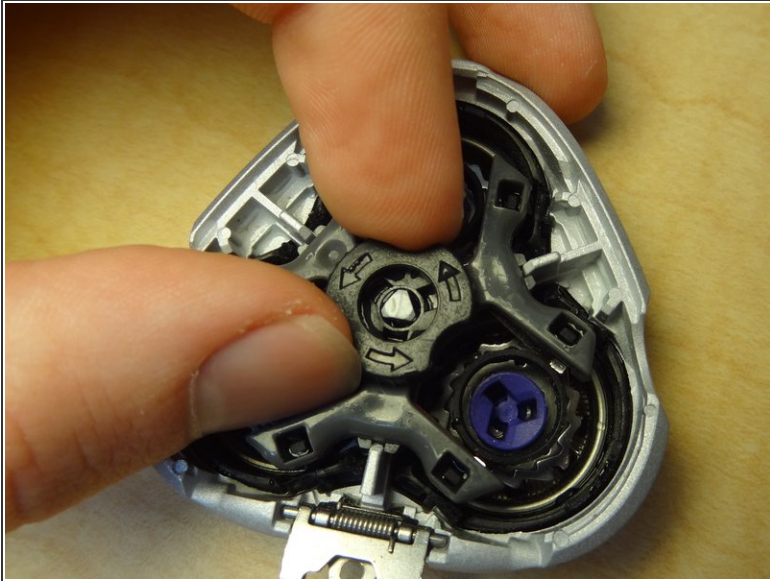
- Begin by pressing the small button beneath the head to allow it to open.

Step 2



- Grasp the sides of the head and pull straight up to detach it from the body.

Step 3



- To unlock, rotate the center locking mechanism counter-clockwise.

Step 4




- Lift the locking mechanism straight up, freeing the blades.

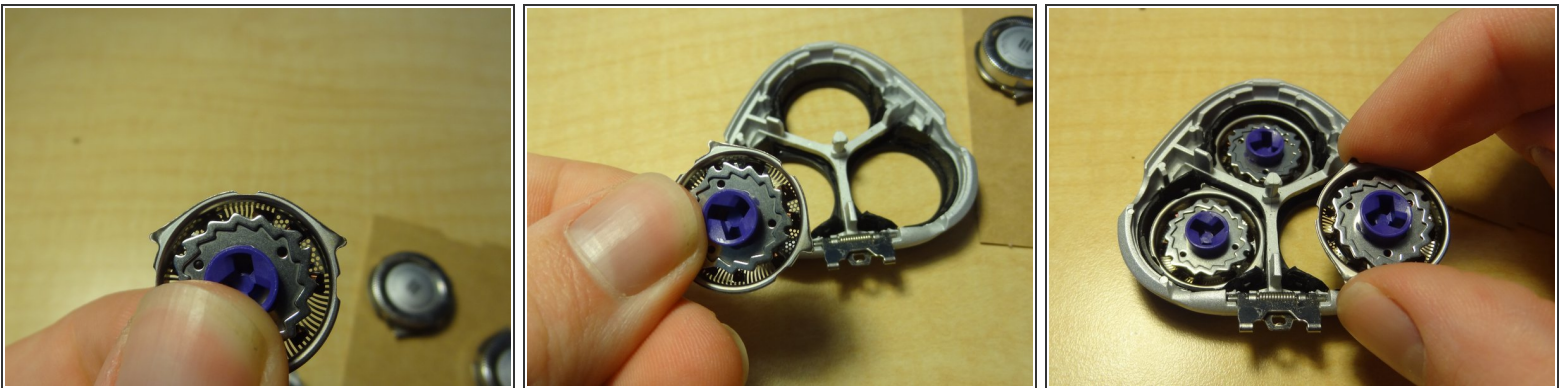
Step 5




- Carefully push the blades out from behind.

 Although the blades are covered, they can fall apart, exposing sharp edges. Always use care when handling.

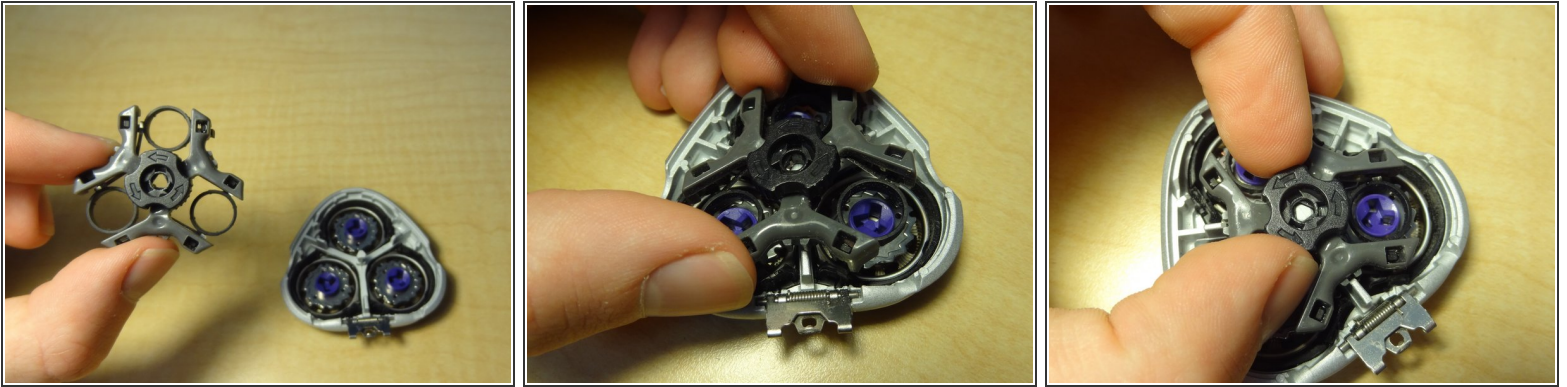
Step 6



- Insert the new blades, making sure to face the side with the two tabs towards the center of the head.

 Although the blades are covered, they can fall apart, exposing sharp edges. Always use care when handling.

Step 7



- Line up the locking mechanism with the new blades, then rotate the center clockwise to lock down.

Step 8



- Push the head back onto the body, then close it up. Your shaver is good to go!