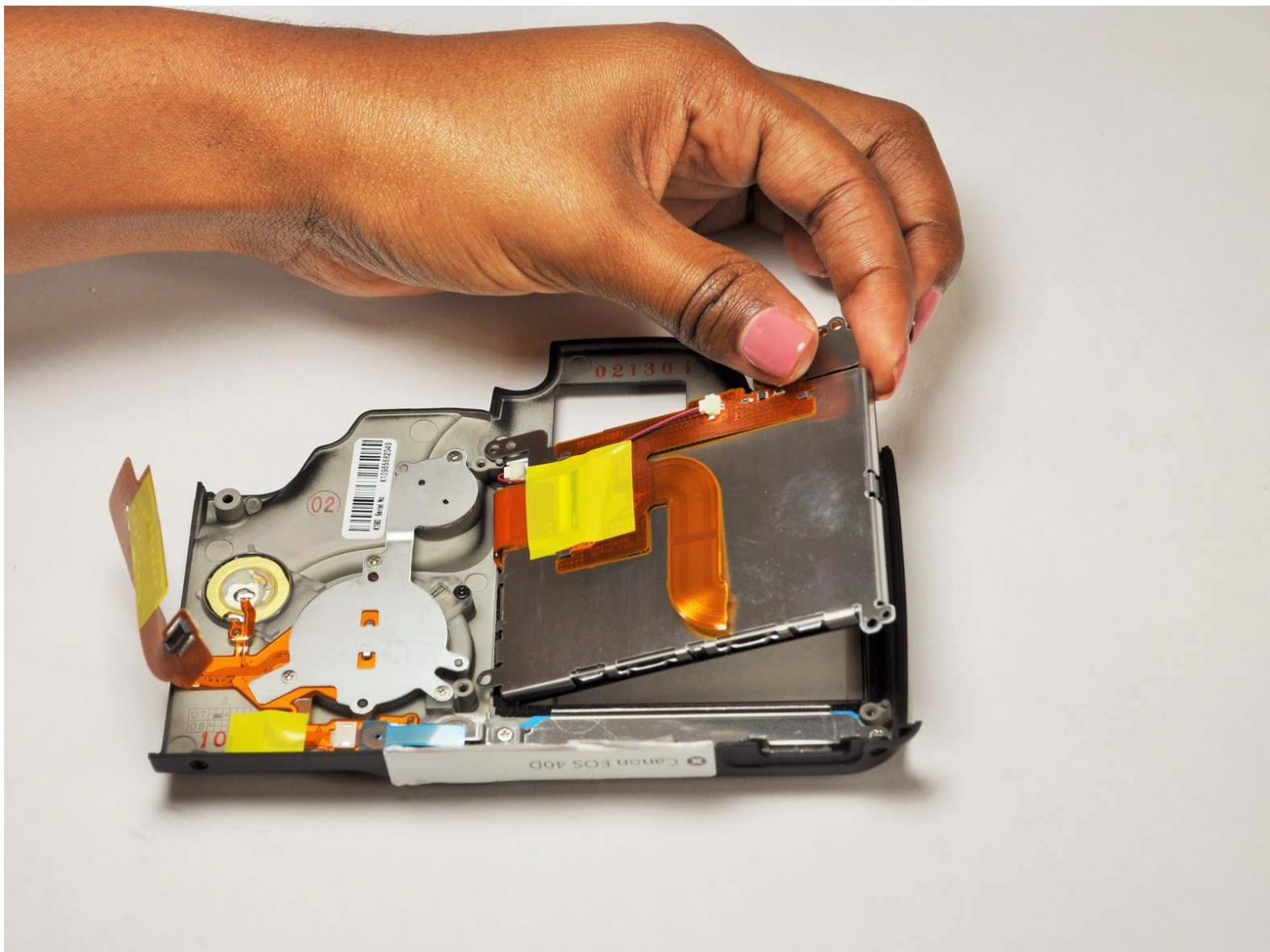




Canon EOS 40D LCD Replacement

This guide will provide step by step instructions on replacing the LCD monitor on the Canon EOS 40D.

Written By: Diarra Thomas



INTRODUCTION

Follow this guide if your LCD monitor is cracked, shattered, or does not display any images. Please purchase a 3.0 inch LCD monitor for the Canon EOS 40D before you continue to the first step.



TOOLS:

- [iFixit Opening Tool](#) (1)
- [Phillips #000 Screwdriver](#) (1)
- [Tweezers](#) (1)



PARTS:

- [3.0 inch LCD monitor for Canon EOS 40D](#) (1)

Step 1 — Battery



- Locate the battery compartment cover on the bottom of the camera below the shutter button.

Step 2



- Find the marked arrow on the battery compartment cover labeled "BATT. OPEN". Slide the lever following the arrow's direction and lift at the same time to release the latch.

Step 3



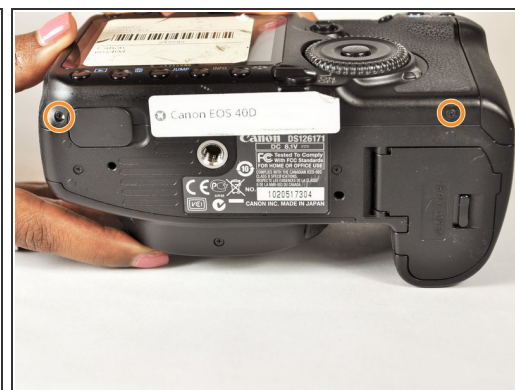
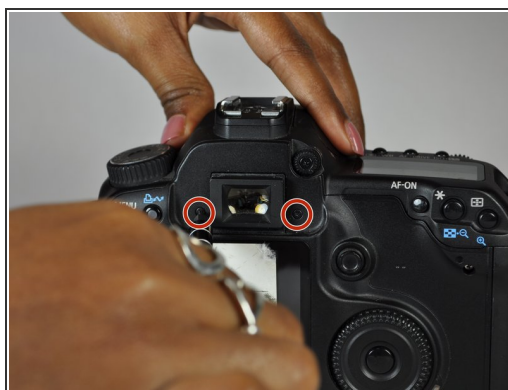
- Release the lever and allow the battery compartment cover to completely open.
- Remove the battery.

Step 4 — LCD



- Remove the rubber eyepiece by sliding it upwards.

Step 5



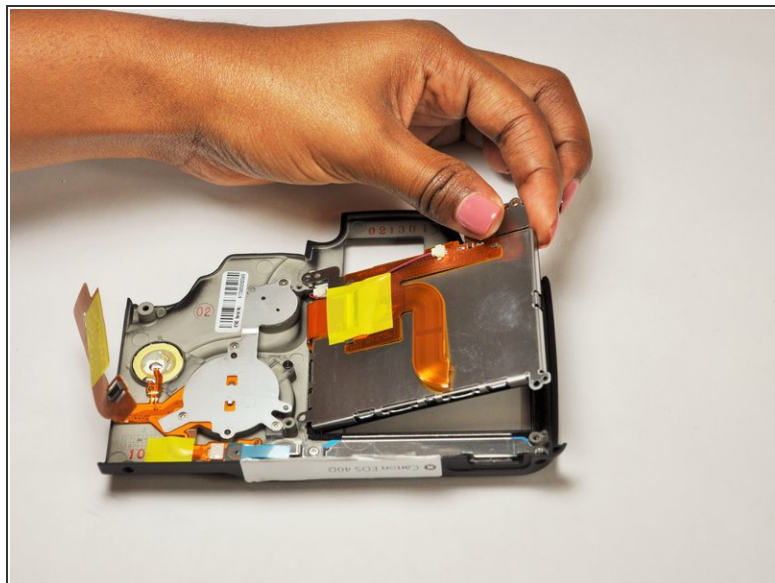
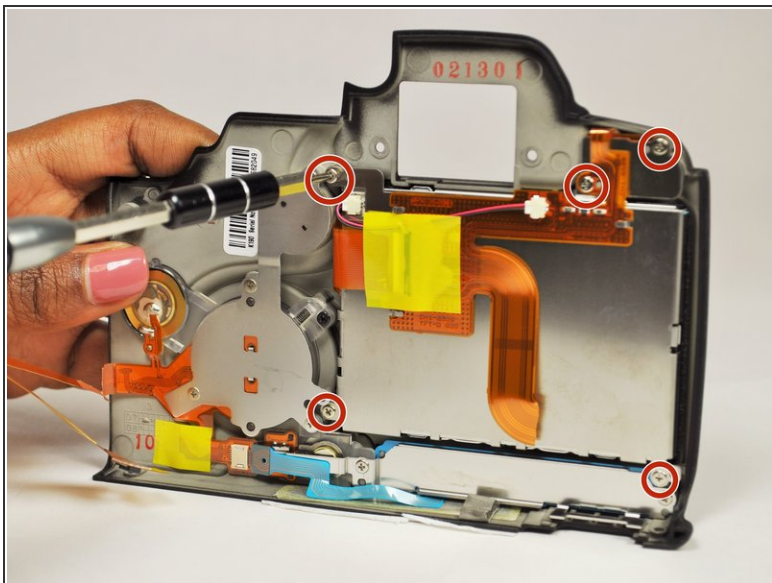
- Remove the three 5.0 mm Phillips #000 screws.
- Remove the two 3.0 mm Phillips #000 screws on the bottom of the camera.

Step 6



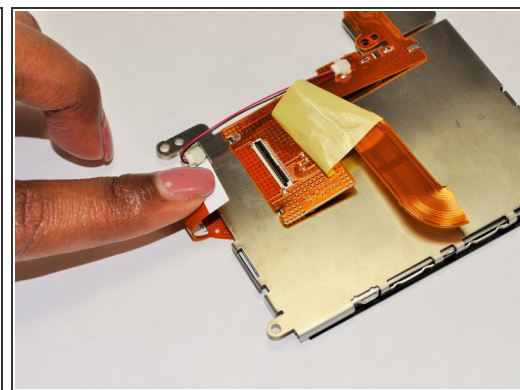
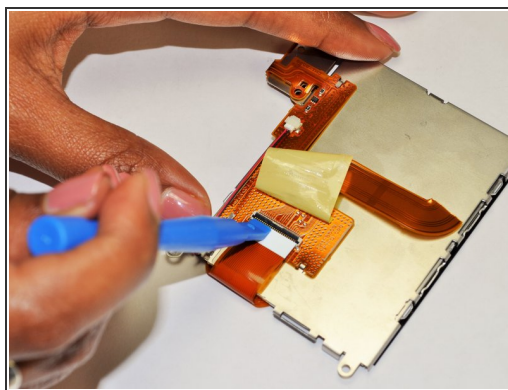
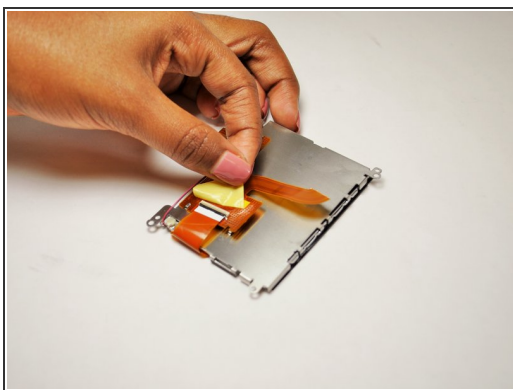
- Remove the side cover using a plastic opening tool or your hands.
- Use a plastic opening tool to gently start prying the rear case up from the rest of the camera.
- Use the tip of a spudger to disconnect the [ZIF connector](#) on the left side of the camera. The ribbon cable on this device was torn in the process of removing the back case, so there are no photos showing this step.
- Disconnect the ribbon cable securing the rear case to the motherboard.
- Separate the rear case from the camera.

Step 7



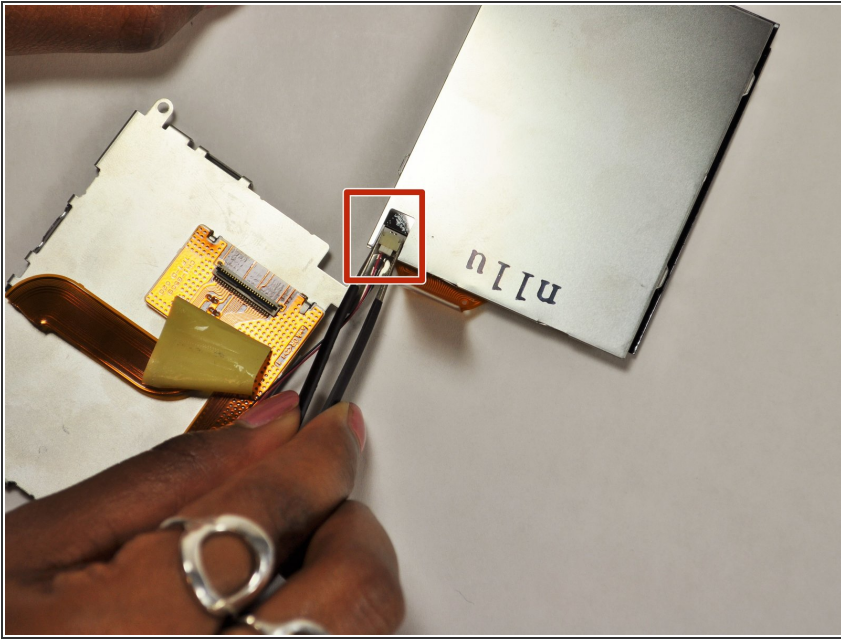
- Remove the five 5.0 mm Phillips #000 screws securing the LCD to the rear case.
- Lift the LCD free of the rear case.

Step 8



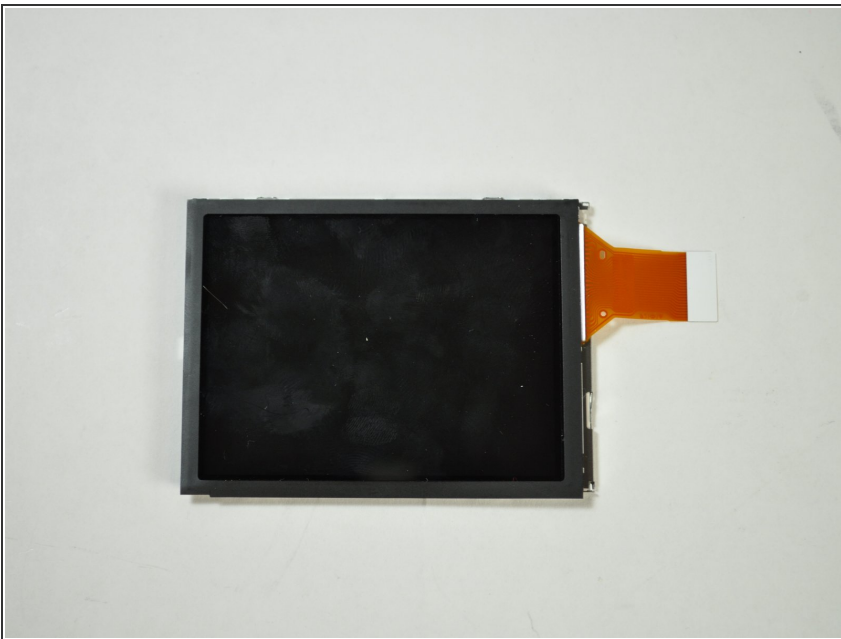
- Remove the yellow tape covering the LCD ZIF connector.
- Use a plastic opening tool to lift up the black retaining flap.
- Pull the LCD ribbon cable out of the connector.

Step 9



- Use a pair of tweezers to disconnect the cable connector.
- The LCD frame should now come free of the LCD panel.

Step 10



- LCD panel remains.
 - ☑ It's a good idea to use a soft cloth to wipe the LCD screen and rear cover before reassembly.

To reassemble your device, follow these instructions in reverse order.