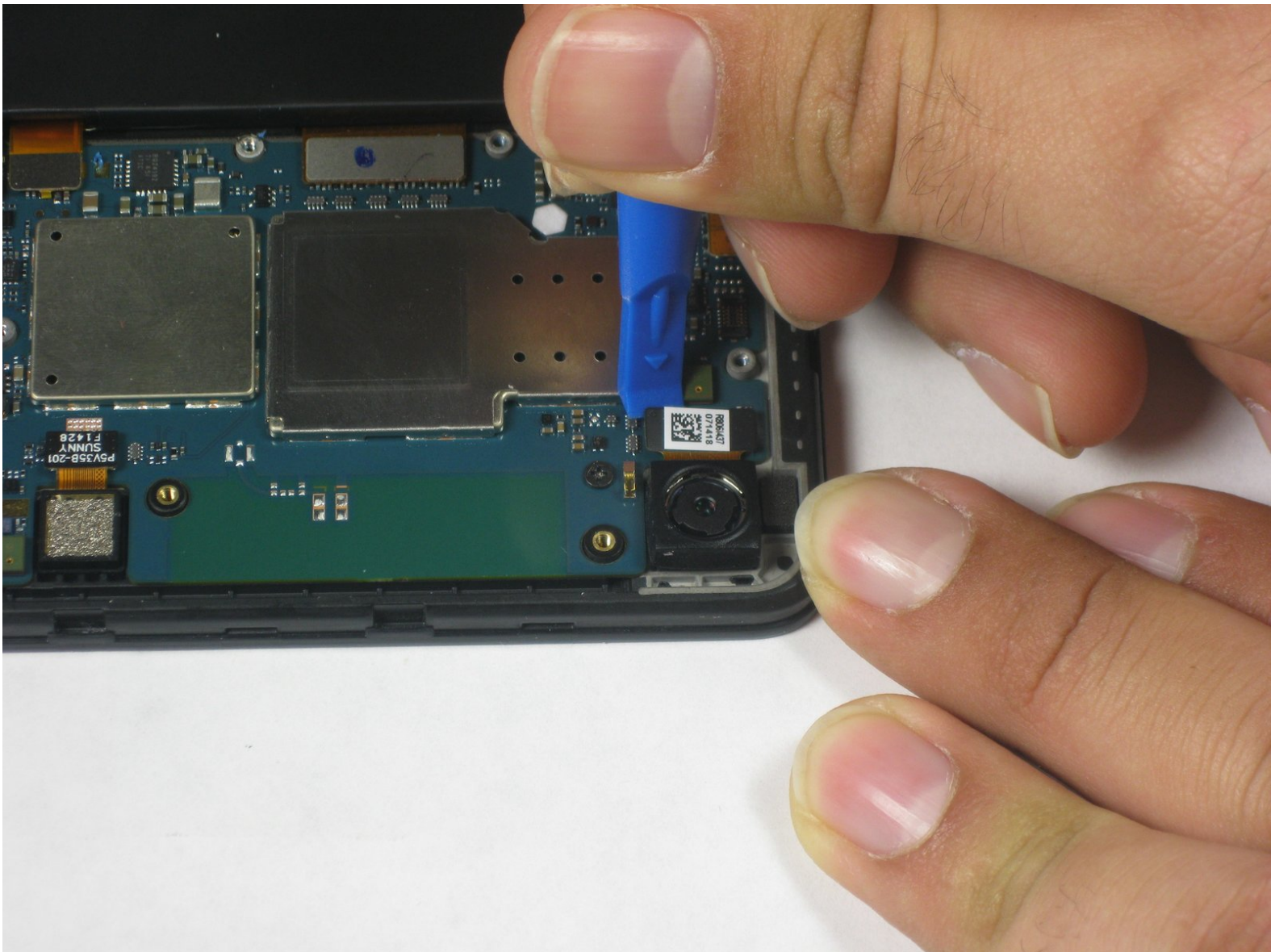




# Xiaomi Mi Pad Rear Camera Replacement

Remove the rear-facing 8 MP camera from your Xiaomi Mi Pad.

Written By: Kiefer Sivitz



# INTRODUCTION

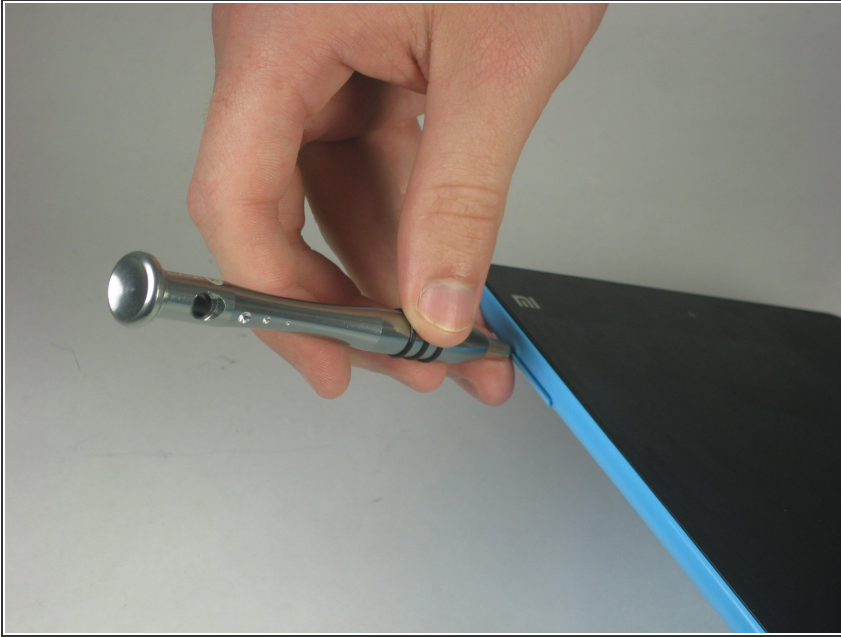
Use this guide to remove the rear-facing camera from your Xiaomi Mi Pad.



## TOOLS:

- [iFixit Opening Tools](#) (1)
  - [Phillips #000 Screwdriver](#) (1)
  - [SIM Card Eject Tool](#) (1)
-

## Step 1 — Rear Case Assembly




- Remove the micro SD card slot from the left side of the device using either the metal pin included with the device or a SIM card eject tool.

## Step 2



- Use a plastic opening tool and/or opening pick to gently pry the back panel away from the device. Work your way around the device, slowly increasing the gap.

 The back panel has small clips and light adhesive that easily releases from the device.



## Step 3 — Rear Camera



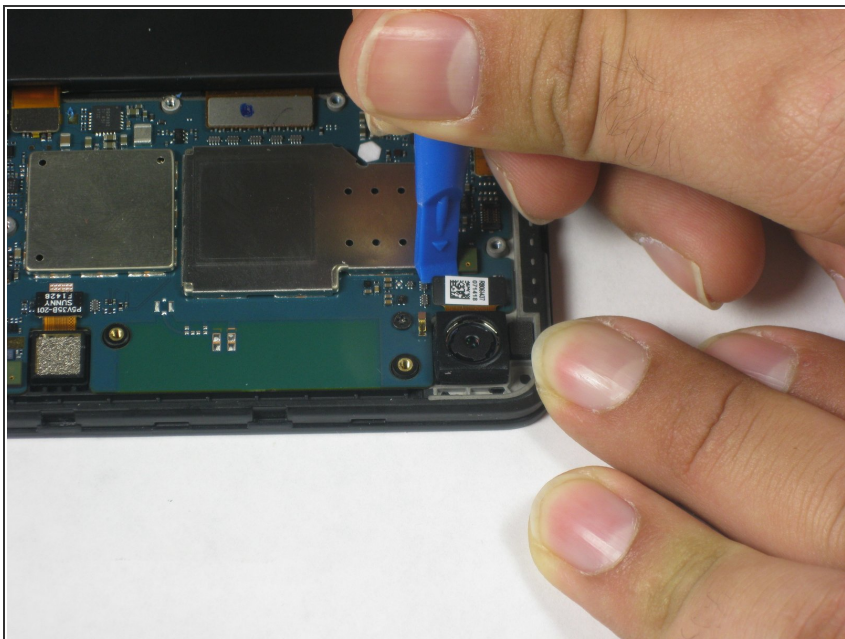
- Remove the twelve 3.0 mm Phillips #000 screws on the upper cover of the device.

## Step 4



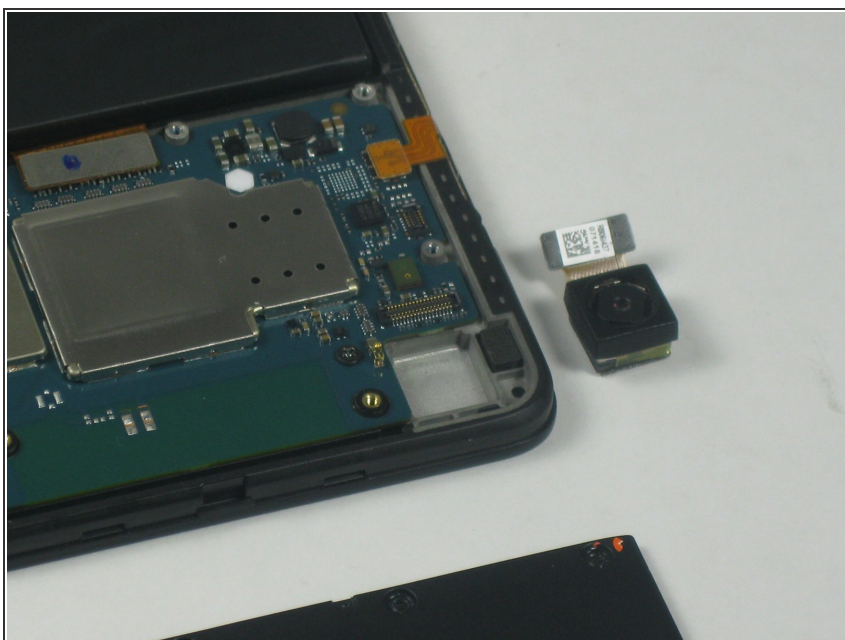
- Remove the upper cover from the device.

## Step 5



- Use a plastic opening tool to disconnect the rear-facing camera from the motherboard.

## Step 6



- Carefully remove the rear camera from the device.

To reassemble your device, follow these instructions in reverse order.