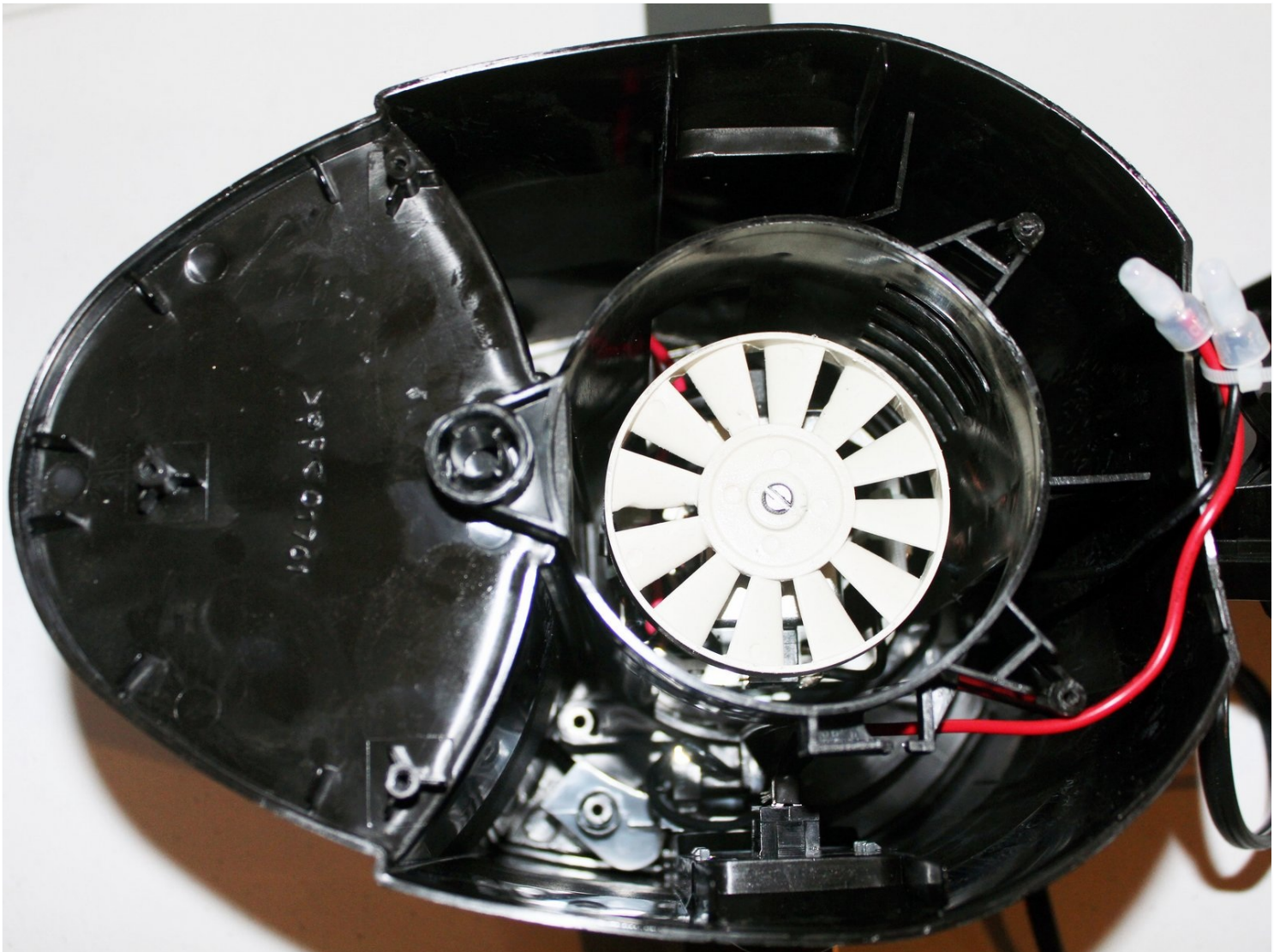




Black and Decker JE2200B Motor Compartment Replacement

The motor compartment is located on the bottom...

Written By: Bhavika Shah



INTRODUCTION

The motor compartment is located on the bottom of the juicer. In this compartment there are many wires. Make sure the machine is off and unplugged before accessing the compartment. Use caution when working with the wires as electric shock can happen.

TOOLS:

2.5 mm Flathead Screwdriver (1)

Step 1 — Motor Compartment



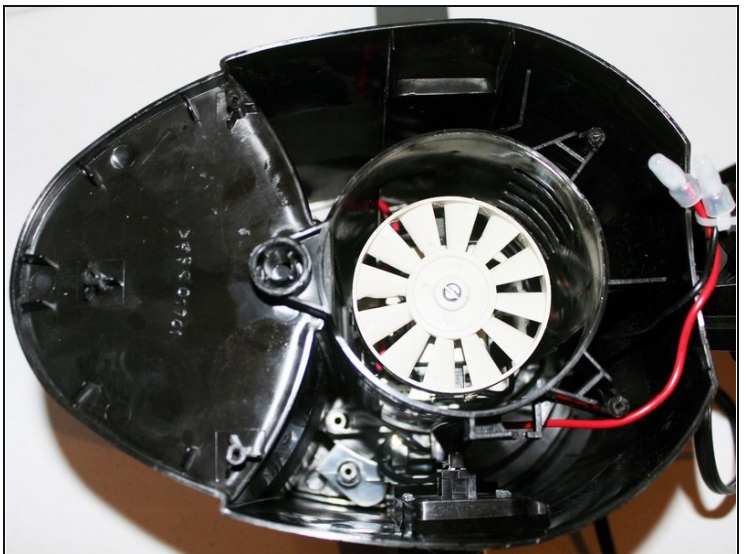
- To replace the motor compartment, first follow the [Disassembly Guide here](#)

Step 2



- Use the [2.5 mm Flathead](#) adapter to remove the 13.5 mm screws from the bottom of the juicer. The screw head diameter is 5.2 mm.

Step 3



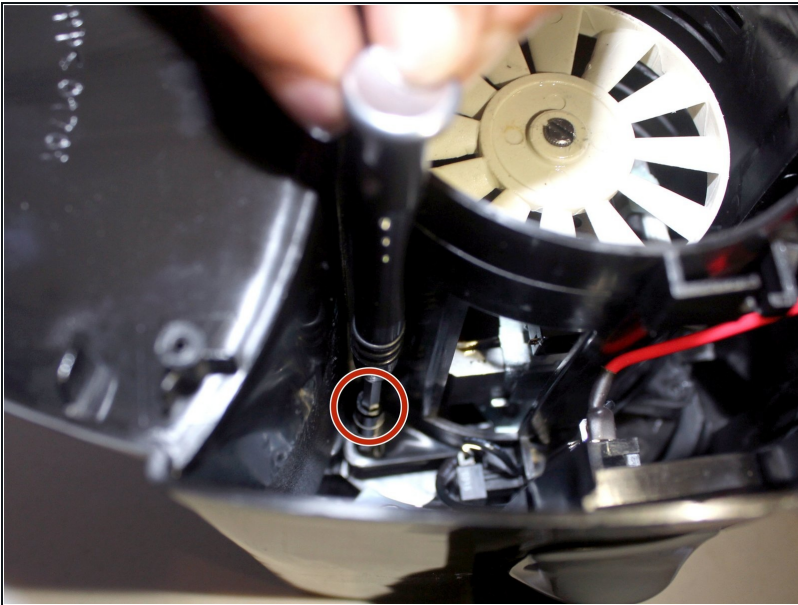
- Carefully remove the bottom off the rest of the machine.

Step 4



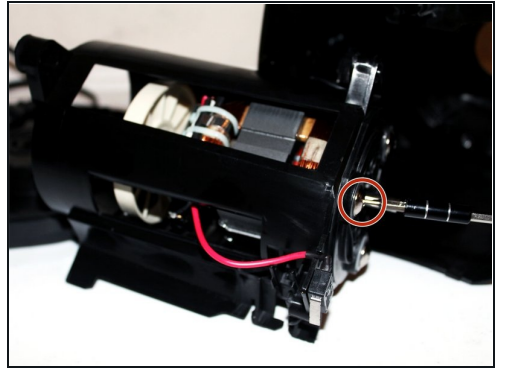
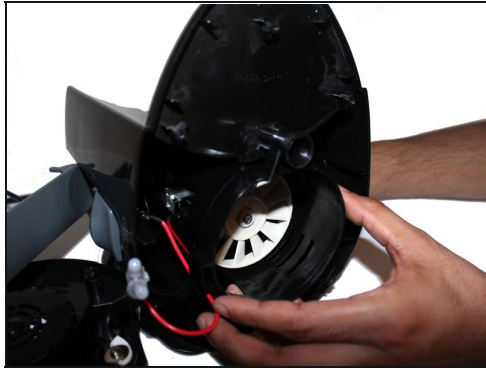
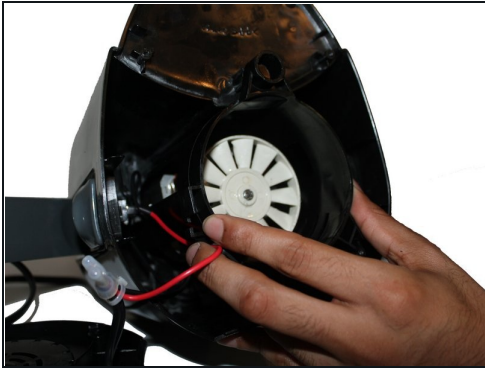
- Lay the juicer horizontally and roll the top shaft cover until it comes off.

Step 5



- Unscrew the 19.1 mm screws inside the juicer holding the motor compartment attached to the juicer. Use the 2.5 mm Flathead adapter as the screw driver. The diameter of the screw head is 7.1 mm.

Step 6



- Remove the motor compartment from the juicer and it is ready to be replaced.

To reassemble your device, follow these instructions in reverse order.