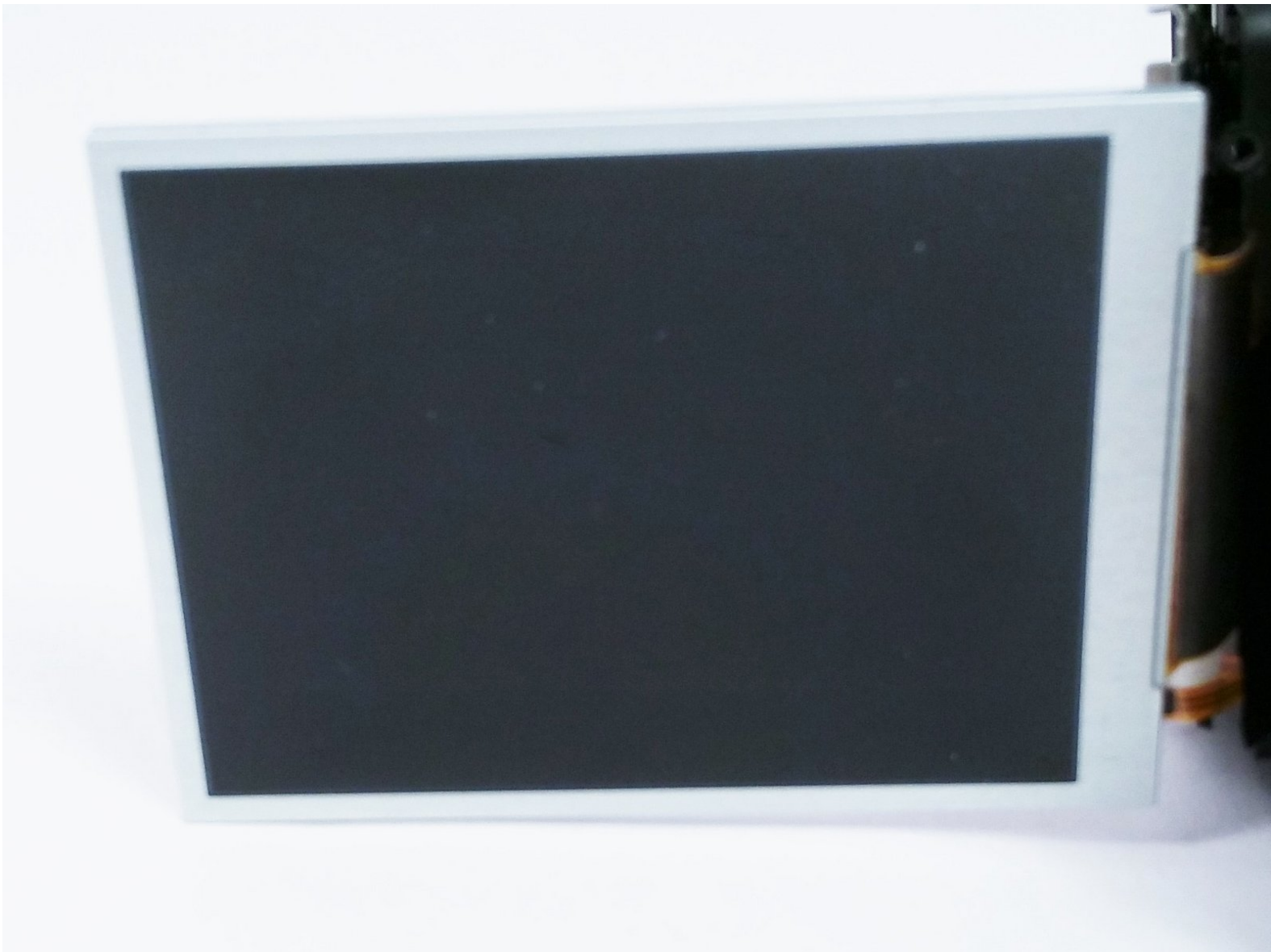




# Sony Cyber-shot DSC-HX300 LCD Screen Replacement

This guide will show how to remove and replace a broken or dysfunctional screen on your Sony Cyber-shot DSC-HX300.

Written By: Elizabeth Surface



## INTRODUCTION

If the LCD screen is not powering on after the LCD/Finder button has been pressed twice, then the screen or the circuit board may need to be replaced.

---

### TOOLS:

- [Magnetic Project Mat](#) (1)
  - [Magnetic Phillips Screwdriver](#) (1)
  - [iFixit Opening Tools](#) (1)
-

## Step 1 — Battery



- ⚠ Make sure the camera is powered off
- Turn the camera upside down. This is a view of the bottom of the camera.

## Step 2



- Push battery cover away from the camera.

### Step 3



- Push the blue tab that secures the battery. The battery will then spring out.

### Step 4



- Remove the battery.



## Step 5 — LCD Screen



**⚠** Working on your device while it is turned on may result in electric shock. Make sure to shut down the camera, remove the battery, and unplug your device before you begin.

- Use a Phillips head screwdriver to remove one 2 cm screw located on the inside portion of the LCD hinge.

## Step 6



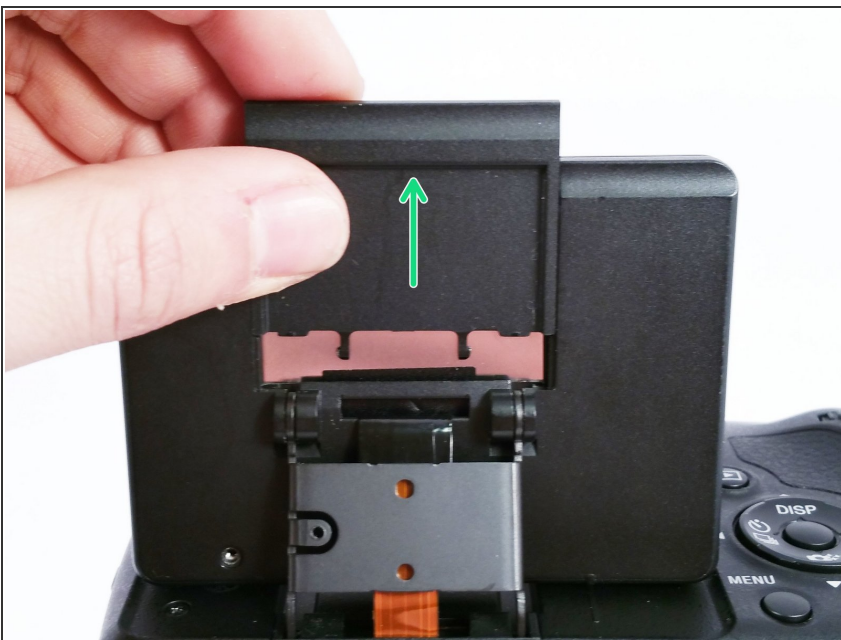
- While using a plastic opening tool, carefully remove the plastic housing that surrounds the hinge.

## Step 7



- Using a small Phillips head screwdriver, remove the (2) 2 cm screws on the back of the LCD display, as indicated in the photo.
- Turn the camera on its side to access the last remaining 2 cm Phillips head screw holding the LCD case together.

## Step 8



- Remove the plastic cover from the back of the LCD display by simply sliding it up and off of the camera.

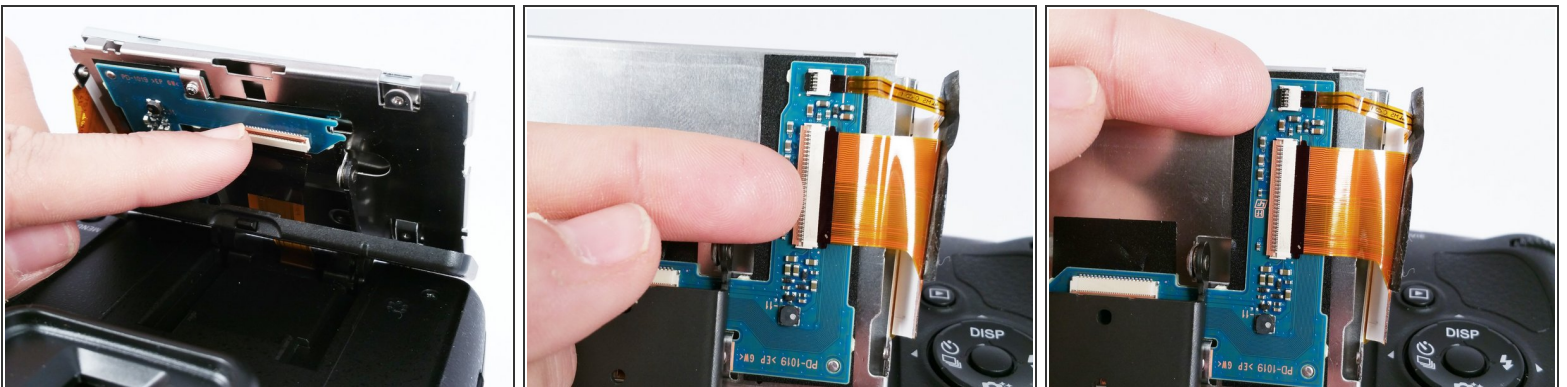


## Step 9



- Using a plastic opening tool, carefully remove the plastic housing that surrounds the LCD display.

## Step 10



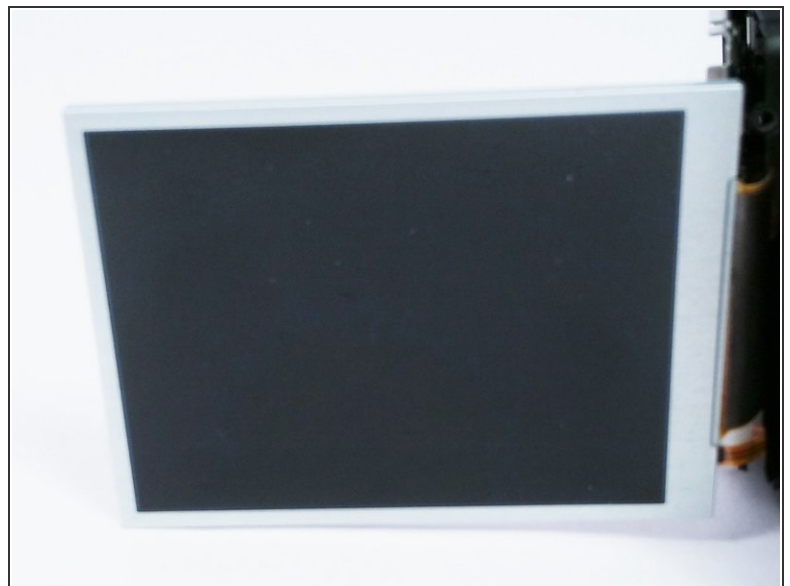
- Once the plastic housing is separated, disconnect the ribbon wire located on the back of the LCD display. This can be achieved by pulling up lightly on the brown bar that locks the ribbon wire to the circuit board..
- Disconnect the remaining two ribbon wires the same way. They are located on the right, rear side of the LCD frame.

## Step 11



- Using a small Phillips head screwdriver, remove the last 2 cm screw that mounts the circuit board to the metal LCD display frame.

## Step 12



- Once the circuit board is removed the replacement parts can be installed in the reverse order.

To reassemble your device, follow these instructions in reverse order. It is important to follow the steps in this order as it may not turn on properly if the user does not follow every step.

This document was generated on 2020-11-28 04:37:08 AM (MST).



