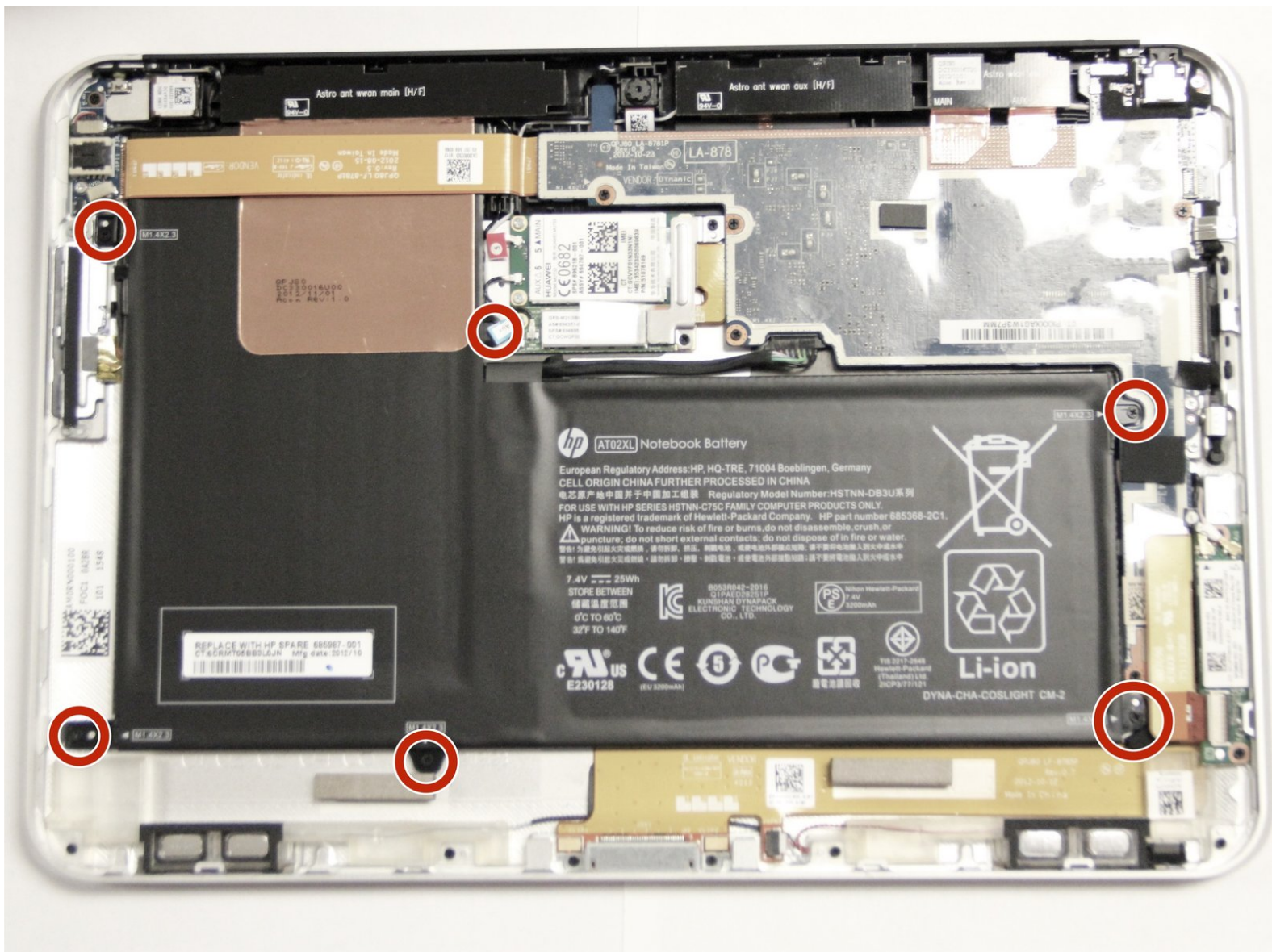




HP ElitePad 900 Battery Replacement

Replace the battery in your HP ElitePad 900.

Written By: Kyle Marques



INTRODUCTION

Use this guide to replace the battery in your HP ElitePad 900.



TOOLS:

- [Phillips #000 Screwdriver](#) (1)
 - [iFixit Opening Tools](#) (1)
 - [Suction Handle](#) (1)
-

Step 1 — Front Panel Assembly



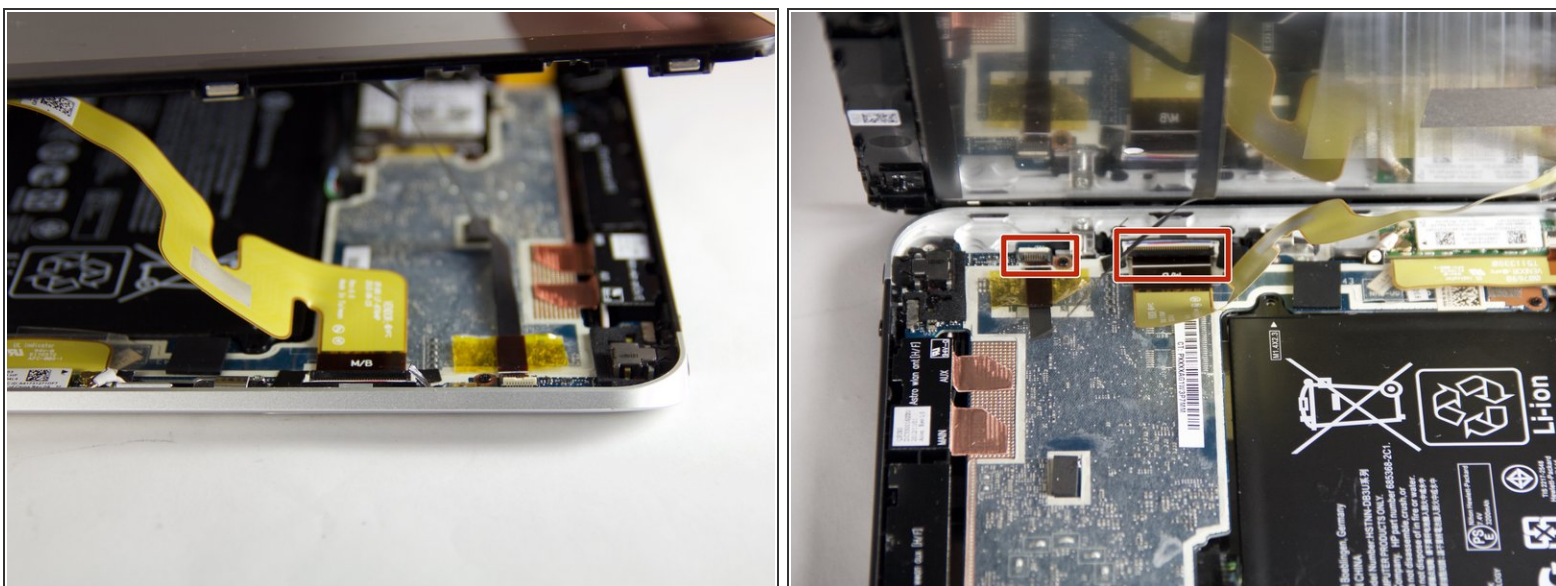
- Unscrew the two 2.8mm Phillips #000 screws near the power connector.

Step 2



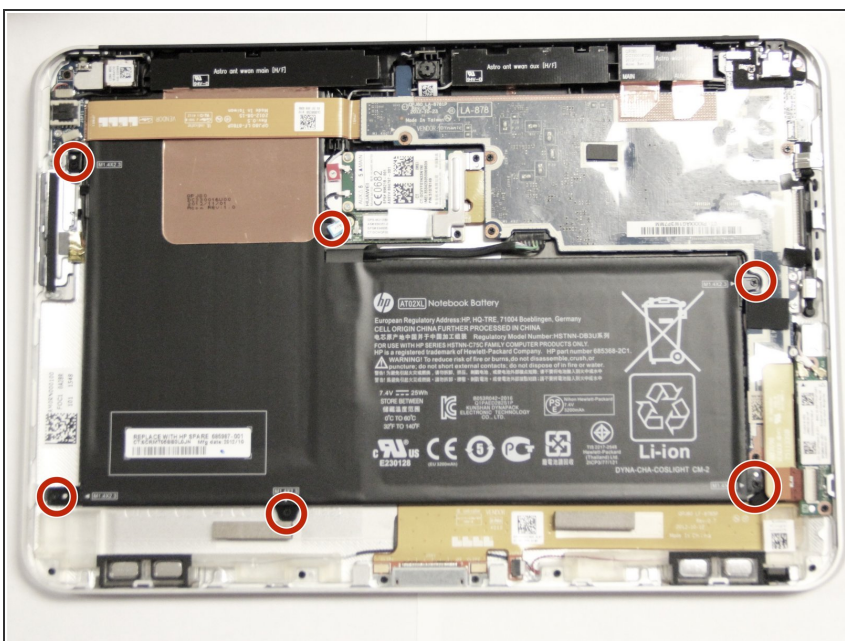
- Use a suction cup to pull the display assembly up.

Step 3



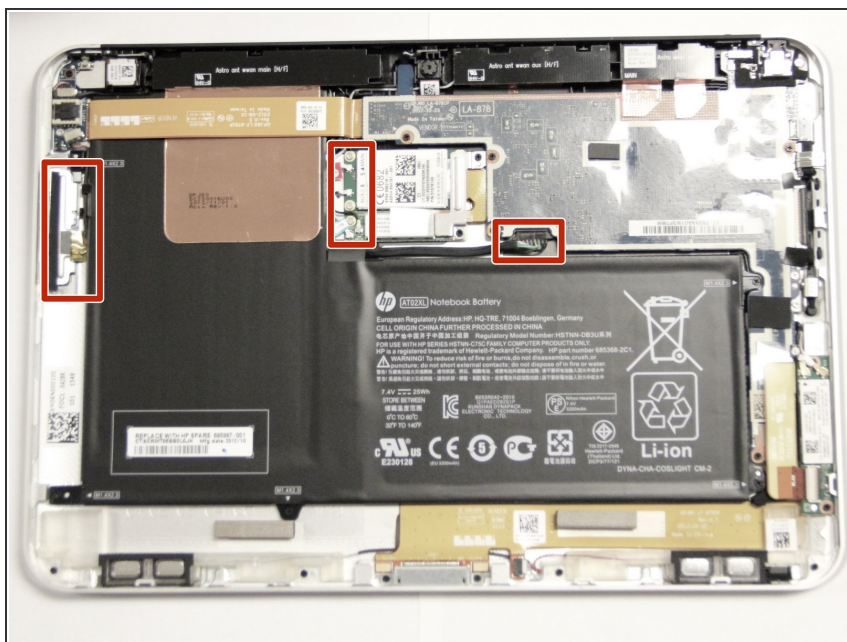
- Use the tip of a spudger to disconnect the two display [ZIF connectors](#).

Step 4 — Battery



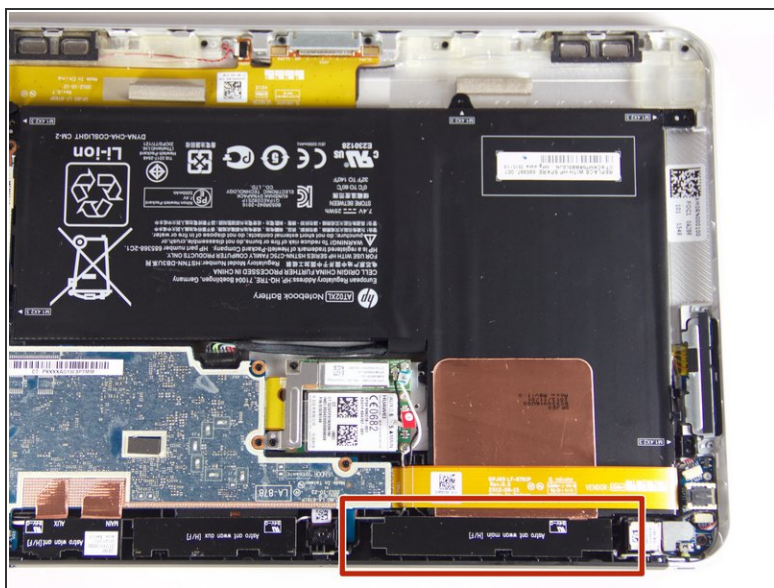
- Remove the six 2.2mm Phillips #000 screws securing the battery to the device.

Step 5



- Disconnect and move the wires out of the way.

Step 6



- Lift cover.

Step 7



- Slide out the battery.

To reassemble your device, follow these instructions in reverse order.