



Philips Norelco BeardTrimmer 3100 Blade Replacement

If the blades of your beard trimmer are not...

Written By: Darren Chu



INTRODUCTION

If the blades of your beard trimmer are not working properly, there could be too much hair/dirt between the blades or the blade may have become worn out over time. The blade may need replacement. By following the steps in this guide you will have a new blade installed in no time.

TOOLS:

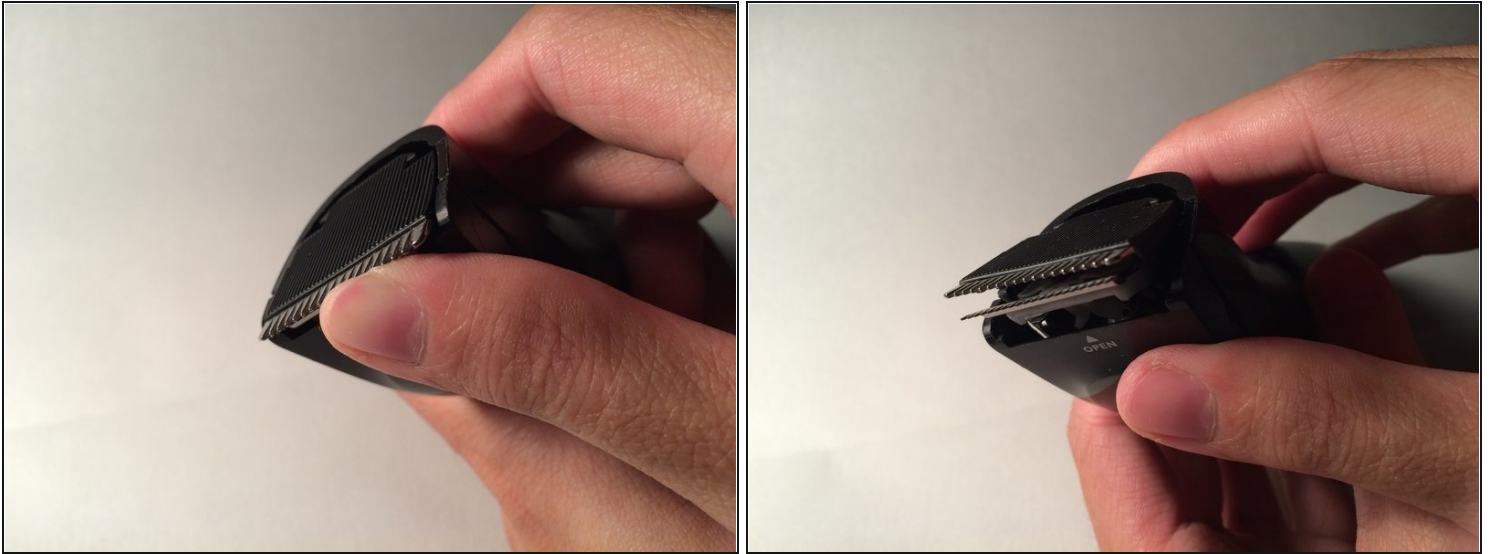
[Tweezers](#) (1)

Step 1 — Blade



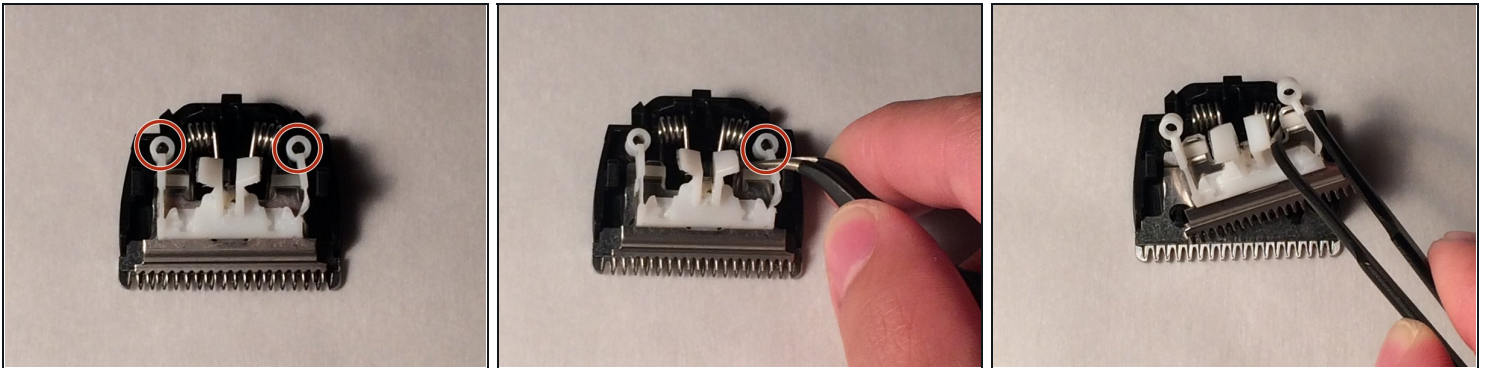
- Remove the comb from the head of the trimmer.

Step 2



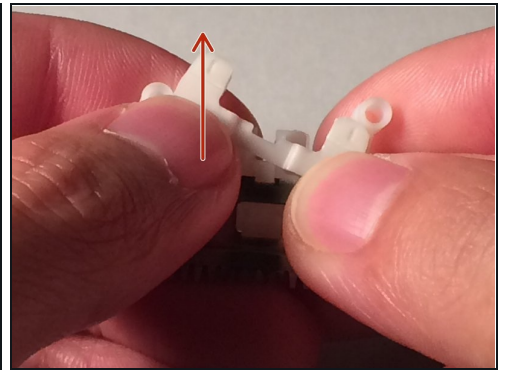
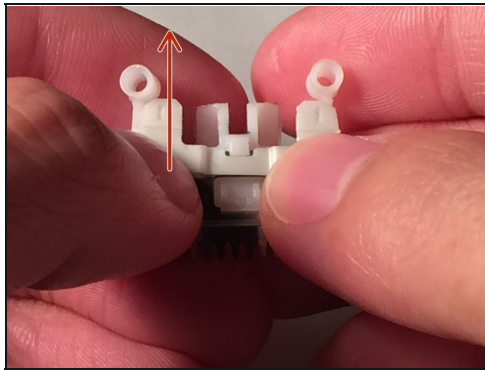
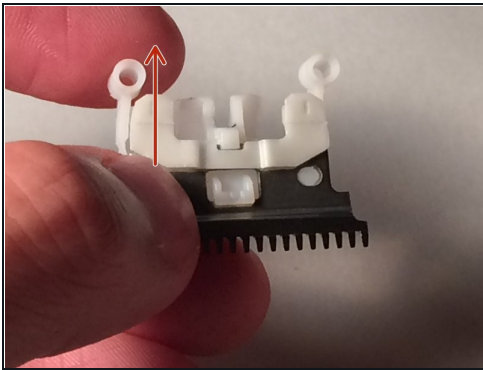
- Place thumb underneath the blade; push upward to pop the blade off.

Step 3



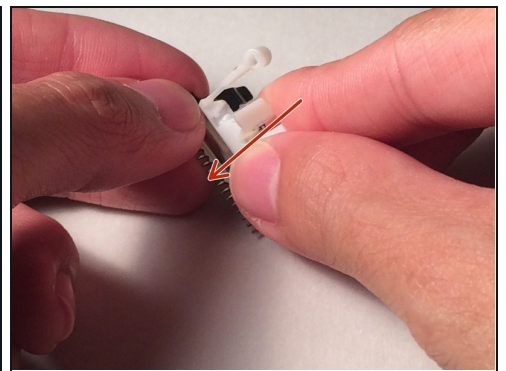
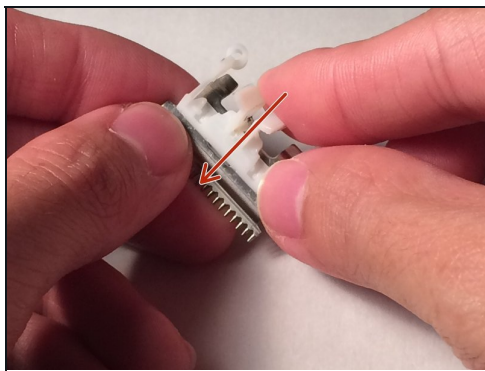
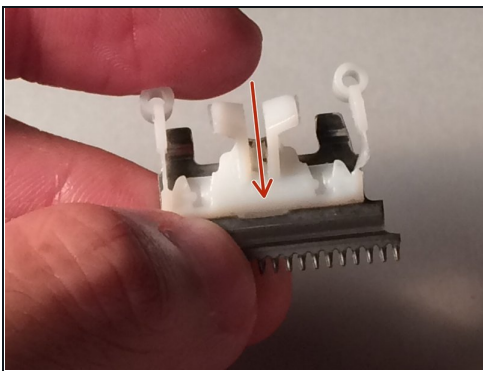
- Grab the plastic arms with the [tweezers](#) and pull them apart from the base.

Step 4



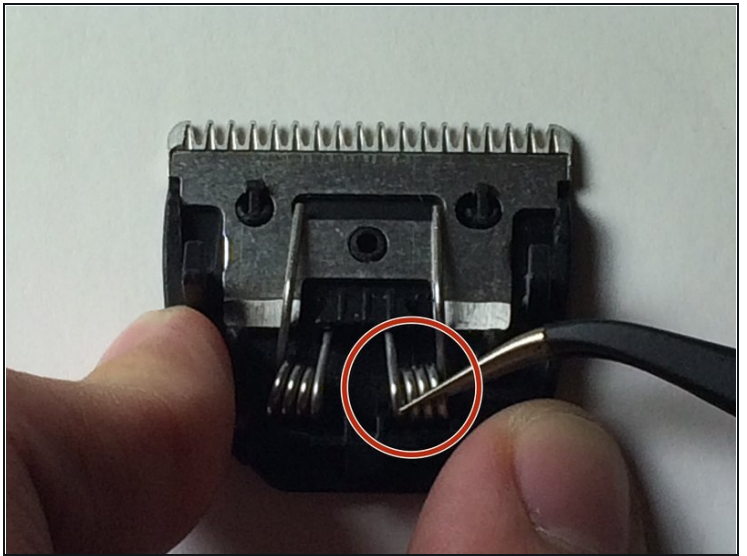
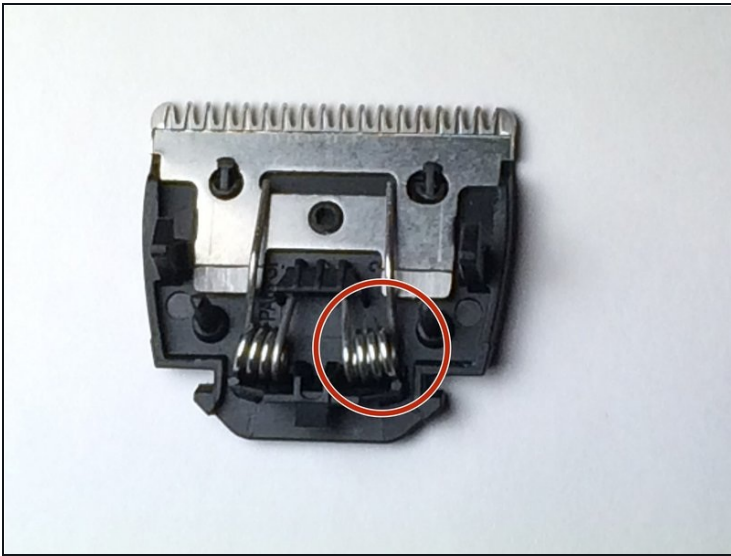
- Remove the plastic casing from the underside of the blade.

Step 5



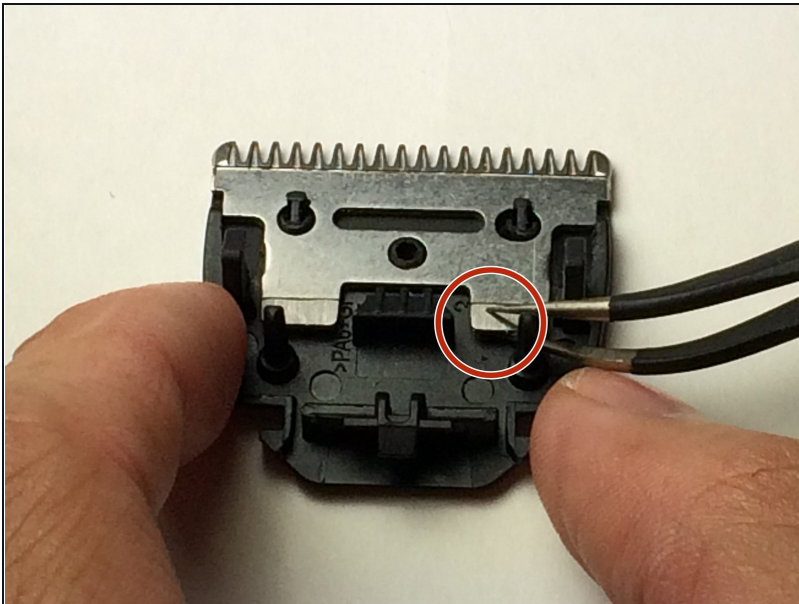
- Remove the last plastic casing from the front side of the blade.

Step 6



- Pull the spring off from the base with the tweezers.

Step 7



- Pull the blade apart from the base with the tweezers.

To reassemble your device, follow these instructions in reverse order.