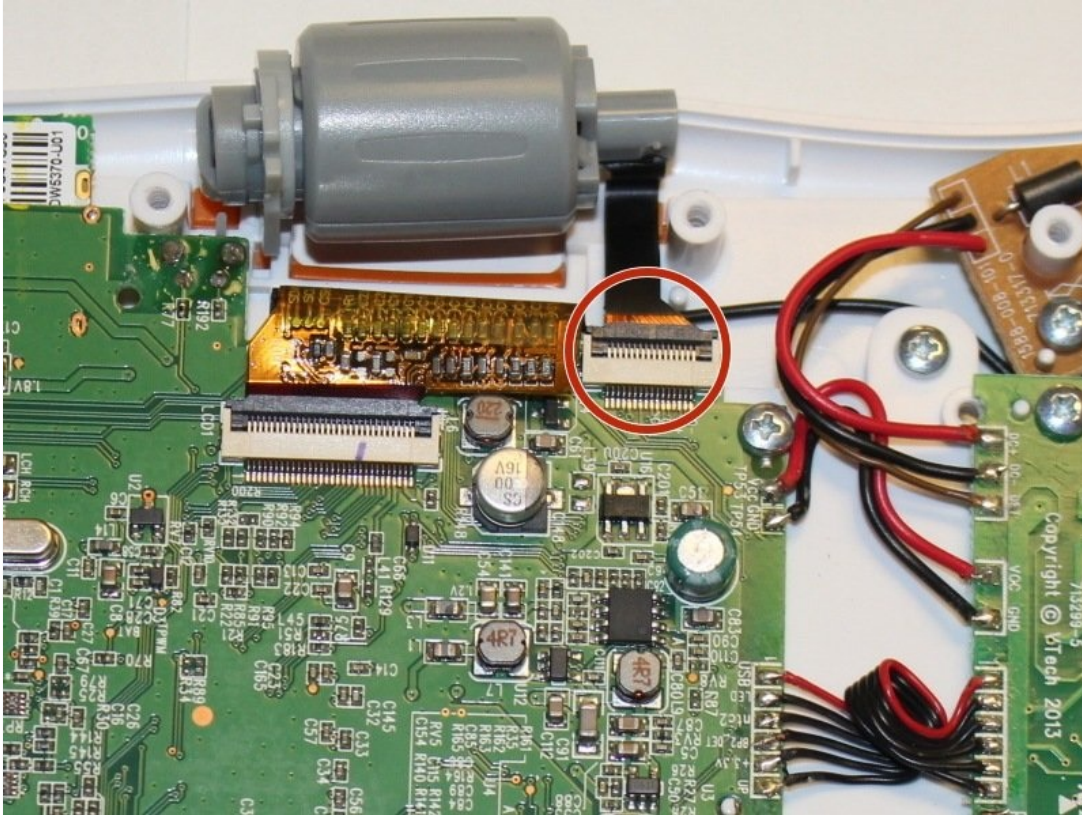




# Vtech InnoTab 3S Camera Replacement

Is the camera not working properly on your...

Written By: Karina Garcia



# INTRODUCTION

Is the camera not working properly on your child's tablet? This guide will walk you through replacing the camera on the Vtech InnoTab 3S.

---

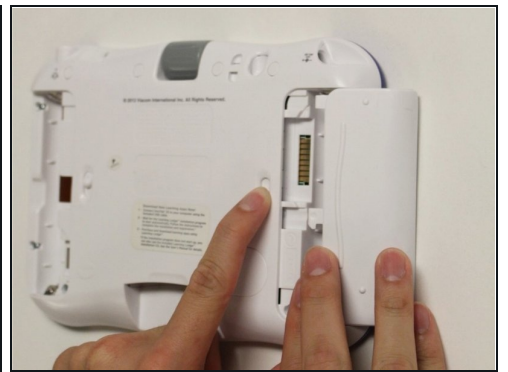
## TOOLS:

Metal Spudger (1)

Phillips #1 Screwdriver (1)

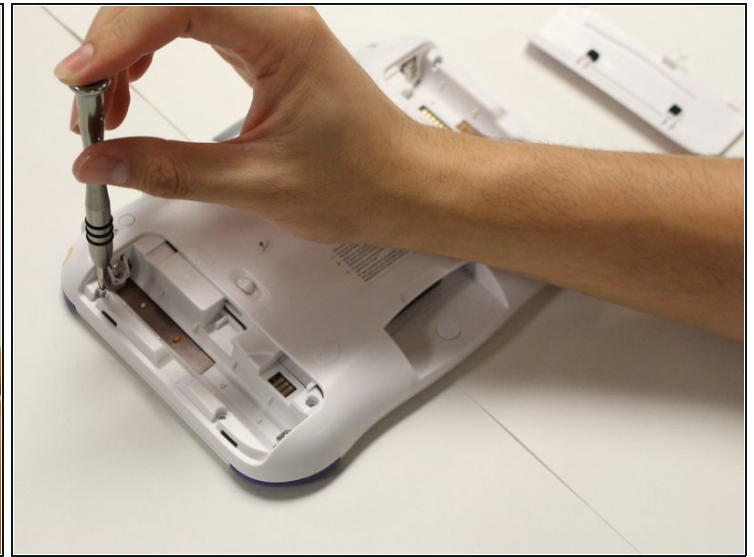
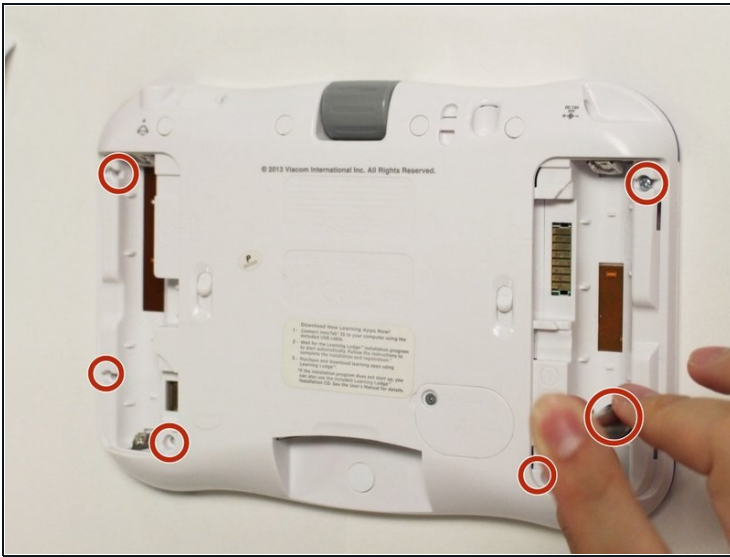
---

### Step 1 — Rear Panel



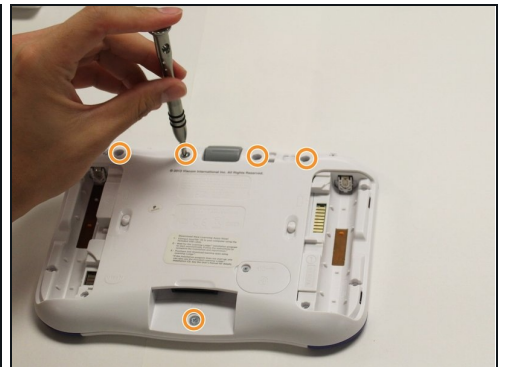
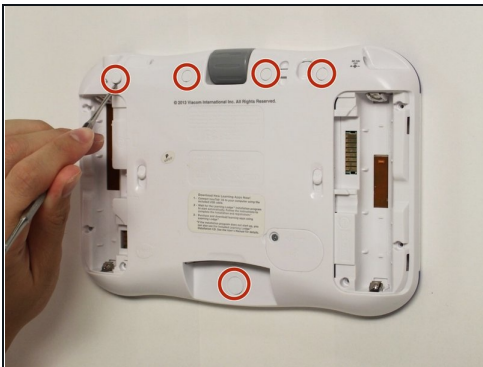
- While holding the battery compartment locks down, slide the two battery doors outwards from the sides of the device.
- Remove the batteries from the device.

## Step 2



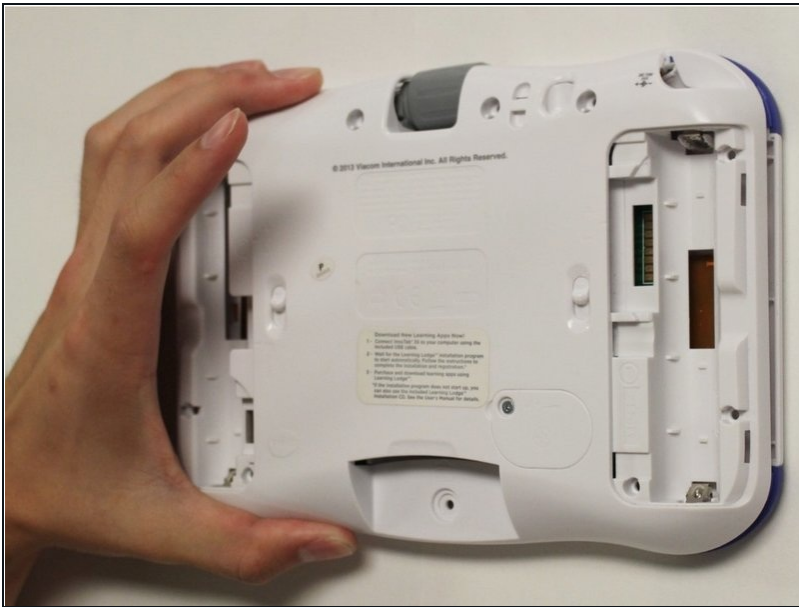
- Remove six 7 mm screws from the interior of the battery compartment using a Phillips #1 screwdriver.

## Step 3



- Using a nylon spudger, remove the five caps that hide the screws.
  - ⚠ Potential for device damage: Be careful not to scrape the plastic from the device using the spudger.
  - ⓘ When removing the caps, hold the spudger vertical to the board to make removal easier. Also try to push in with your spudger pointing towards the bottom of the device.
- Remove the five 5 mm Phillips #1 screws from the rear panel of the device.

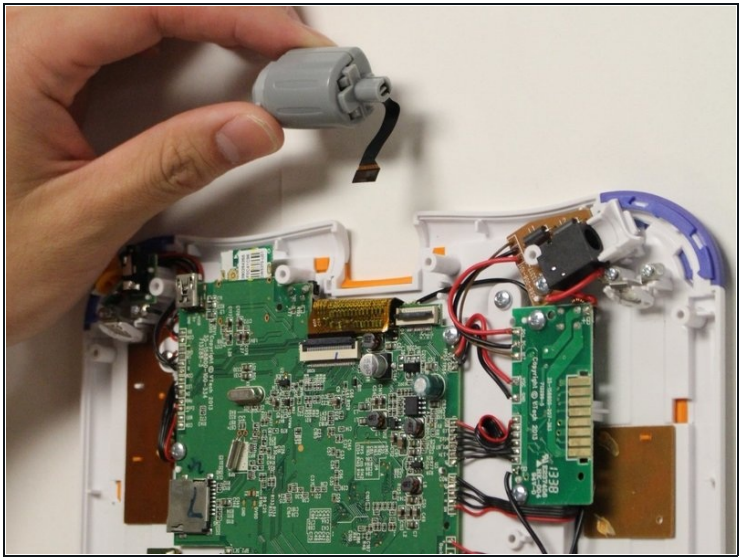
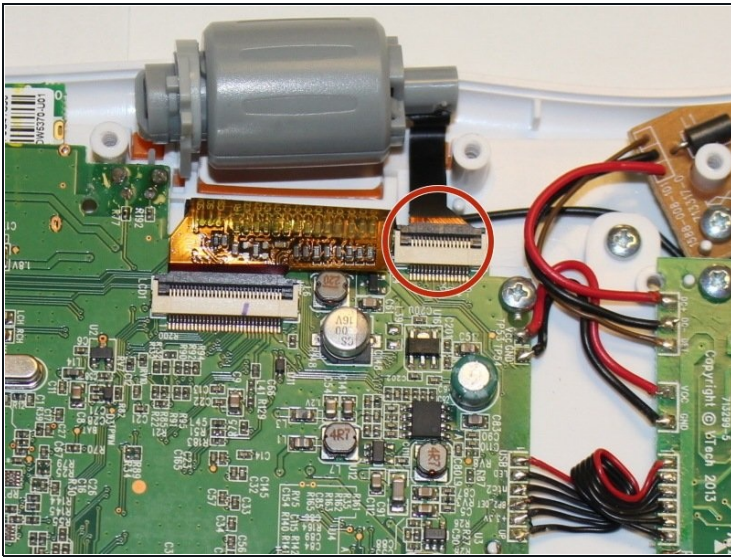
## Step 4



- Carefully remove the rear panel from the front panel of the device.
- ① Once the rear panel is removed, you'll be able to see the motherboard and other components within the Vtech InnoTab 3s.



## Step 5 — Camera



- Using the tip of your finger, carefully pull the clip upwards to release the camera connection from the motherboard.
  - ⓘ The connection between the motherboard and the camera is located at the near the top of the device.
  - Remove the camera and the connecting wire from the the clip and attach the replacement cameras connection to the latch on the motherboard.
  - Carefully lower the latch until you hear a click to secure the new camera to the device.
- ⚠ Pulling or tugging on the connection between the camera and the circuit board may cause damage to the connection.

To reassemble your device, follow these instructions in reverse order.