



Vtech InnoTab 3S Rear Panel Replacement

In order to repair the Vtech InnoTab 3s, it's...

Written By: Karina Garcia



INTRODUCTION

In order to repair the Vtech InnoTab 3s, it's necessary to know how to properly take apart the rear panel of the device.

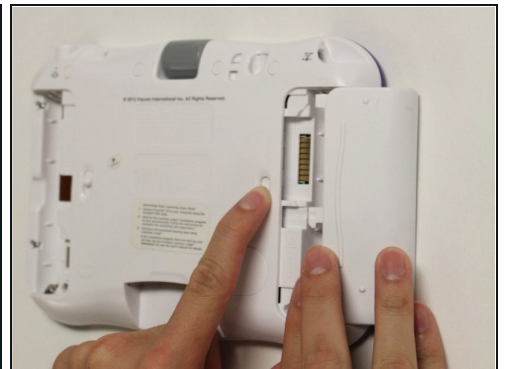
The standard battery options for the InnoTab 3S is four AA batteries. Vtech also offers a rechargeable battery online. Both battery options are removed from the device in the same way.

TOOLS:

Phillips #1 Screwdriver (1)

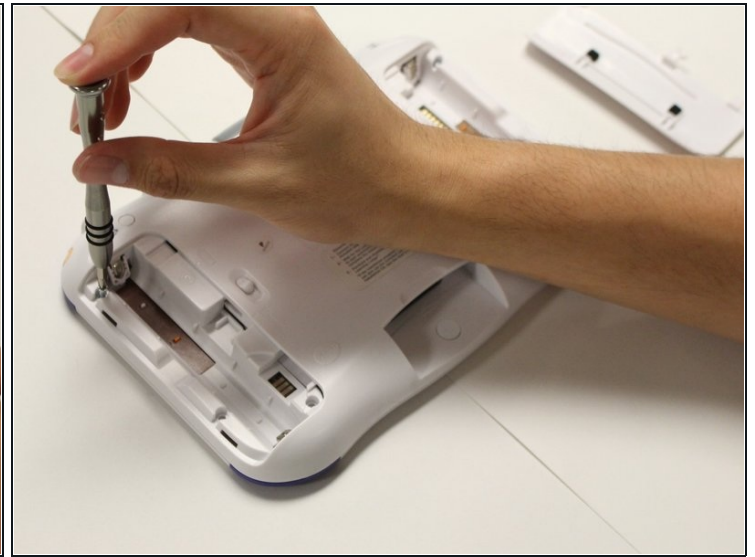
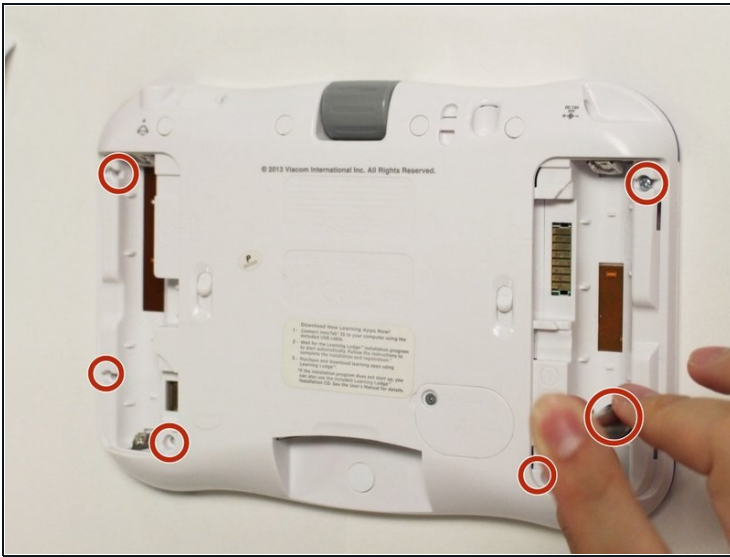
Metal Spudger (1)

Step 1 — Rear Panel



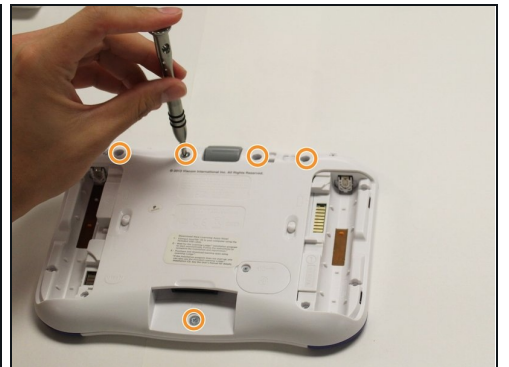
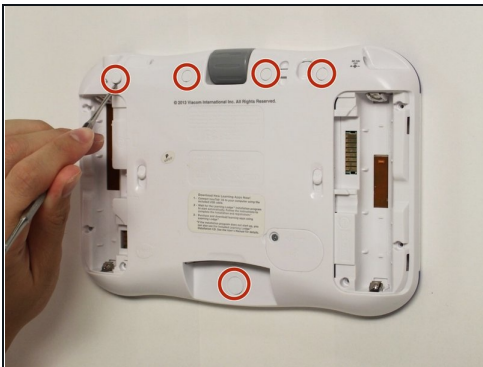
- While holding the battery compartment locks down, slide the two battery doors outwards from the sides of the device.
- Remove the batteries from the device.

Step 2



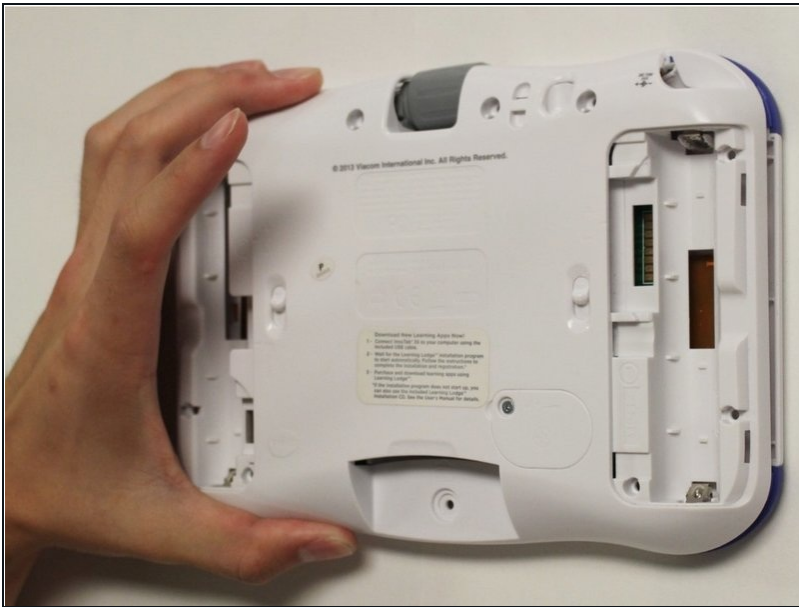
- Remove six 7 mm screws from the interior of the battery compartment using a Phillips #1 screwdriver.

Step 3



- Using a nylon spudger, remove the five caps that hide the screws.
 - ⚠ Potential for device damage: Be careful not to scrape the plastic from the device using the spudger.
 - ⓘ When removing the caps, hold the spudger vertical to the board to make removal easier. Also try to push in with your spudger pointing towards the bottom of the device.
- Remove the five 5 mm Phillips #1 screws from the rear panel of the device.

Step 4



- Carefully remove the rear panel from the front panel of the device.
- ① Once the rear panel is removed, you'll be able to see the motherboard and other components within the Vtech InnoTab 3s.

To reassemble your device, follow these instructions in reverse order.