



Logitech Harmony Ultimate Battery Replacement

Replacing bad battery on Logitech Harmony Ultimate.

Written By: Aaron Diaz



INTRODUCTION

If your battery keeps dying then refer to this short and easy guide on how to remove and replace your battery. The device components are delicate so be sure to take care when opening the device. Recommended for this guide are plastic opening tools and a phillips screwdriver. The most difficult part of this guide is locating all of the screws and physically opening the back panel of the remote.

TOOLS:

- [Phillips #0 Screwdriver](#) (1)
 - [iFixit Opening Tools](#) (1)
-

Step 1 — Battery



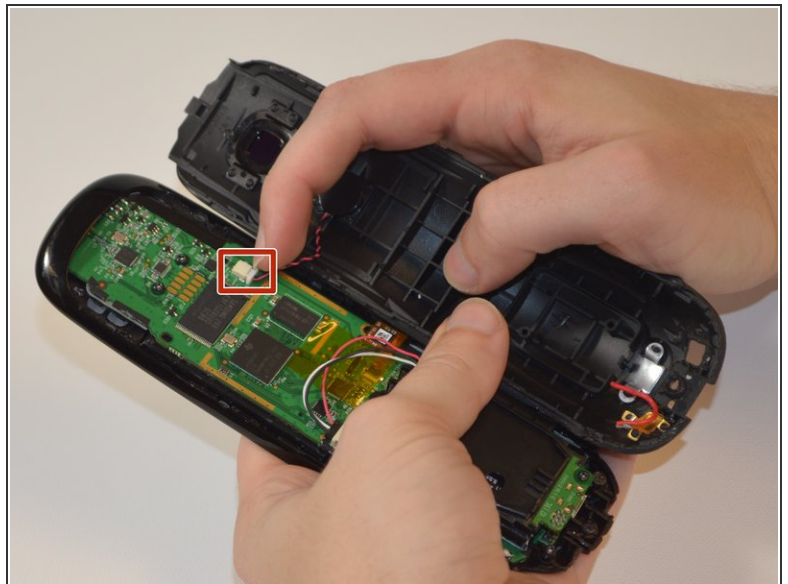
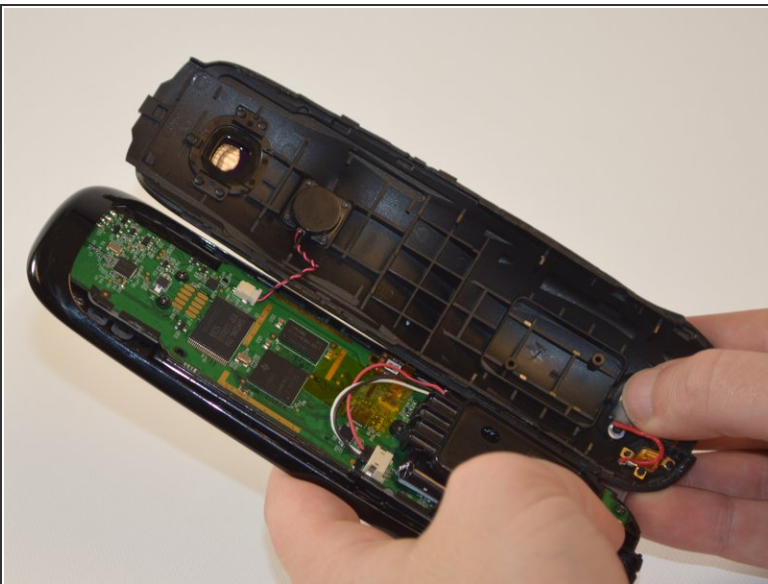
- Remove the single 6 mm Phillips #0 screw located beneath the sticker near the USB charging port.

Step 2



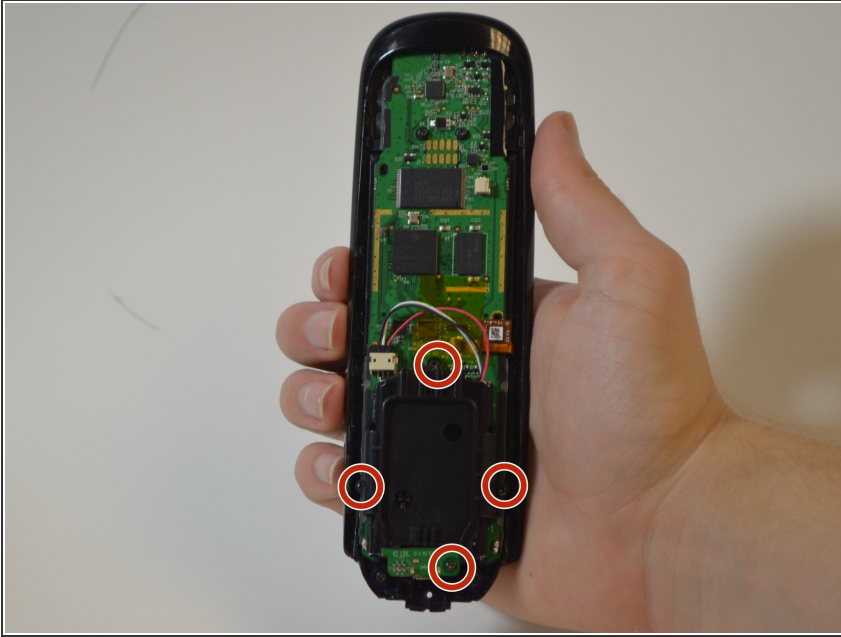
- Use a plastic opening tool to release tabs that hold the front panel and back panel together. There are three tabs on each side of the device that need to separate for the device to open.
- ☑ The use of a plastic opening tool is recommended to avoid damaging the remote. Use stronger tools as a last resort.

Step 3



- Disconnect the wires running from the back cover to the motherboard.

Step 4



- Remove the four 6mm Phillips #0 screws from the battery case.

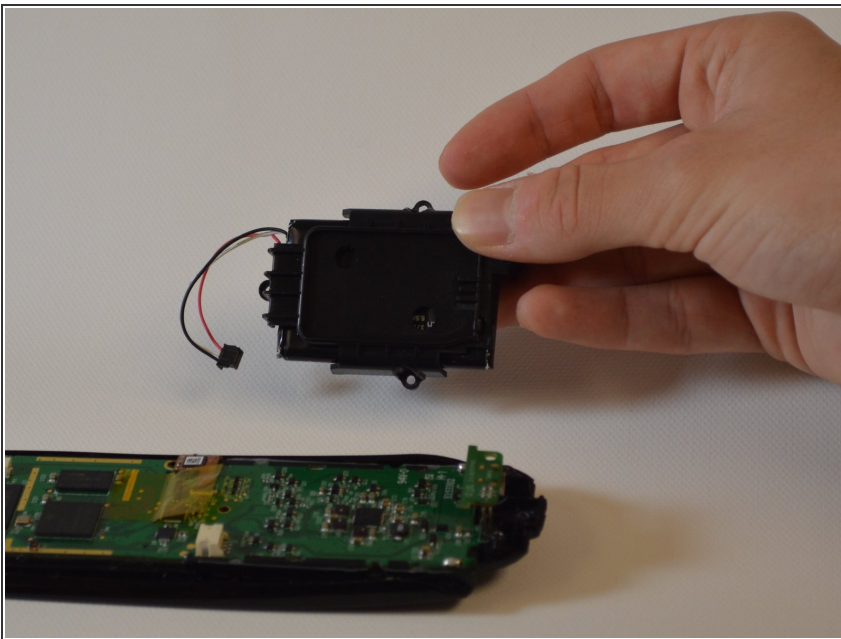
Step 5



- The battery is still connected to the device via wiring. To free the battery completely, remove the dark plastic piece from the slot with the plastic opening tool. Slowly rotate the dark plastic piece and the battery clockwise until then can be removed from underneath the small circuit board with the USB port.

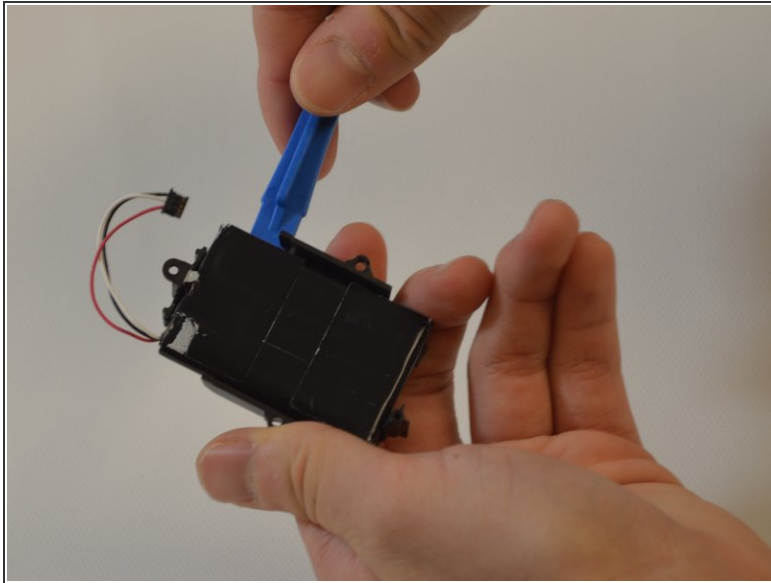
- ① Removing the dark plastic piece from the motherboard takes some patience, as the remote is designed so that the battery will not dislocate under extreme conditions. The small circuit board with the USB port remains connected to the motherboard by six 10 mm pins.

Step 6



- Lift the battery and its case out of the remote.
- ① The battery should still be connected to the case with adhesive.

Step 7



- Use the plastic opening tool to separate the battery from the case.

To reassemble your device, follow these instructions in reverse order.