



# SuperTooth Buddy Battery replacement

Replacing the battery in the SuperTooth buddy...

Written By: markus1980wien



# INTRODUCTION

Replacing the battery in the SuperTooth buddy hands-free system.

## TOOLS:

[Essential Electronics Toolkit](#) (1)

### Step 1 — Rechargeable batteries



- Carefully lift off the glued on cover.



## Step 2



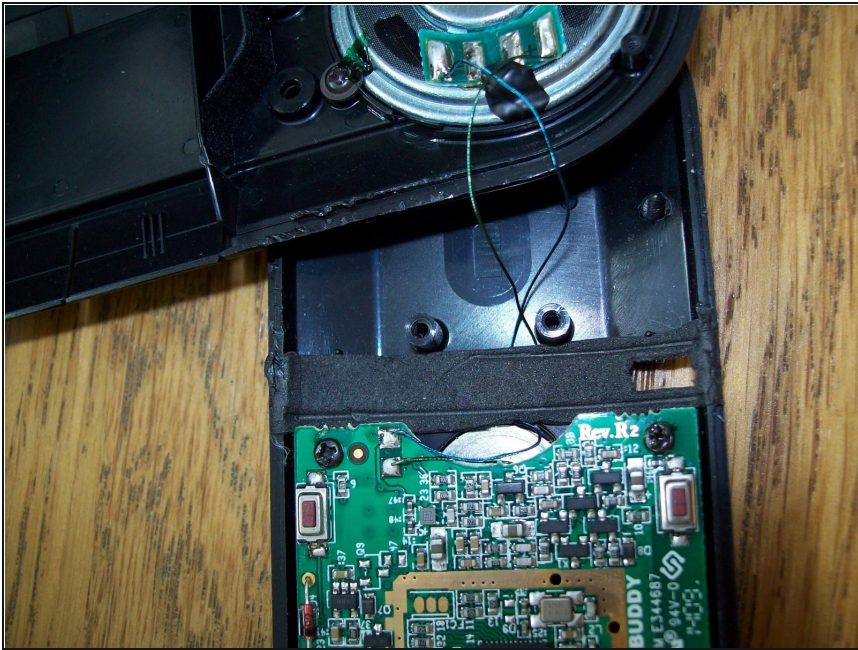
- Remove the two screws on the right.
- There is also a small screw to the left of the green button

## Step 3



- There are also two screws on the back that need to be removed

## Step 4



- Be careful when lifting off the cover so as not to damage the two thin speaker cables.
- Carefully remove the two screws holding the circuit board in place.
- The battery is located under the circuit board

## Step 5



- Order a replacement battery online.
- Li-ION 3.7V 650mAh 2.41 Wh
- Make sure that the new battery has the same dimensions as the old one. (In this case it was approx. 50mm x 30mm x 4mm.)

---

To reassemble your device, follow these instructions in reverse order.

