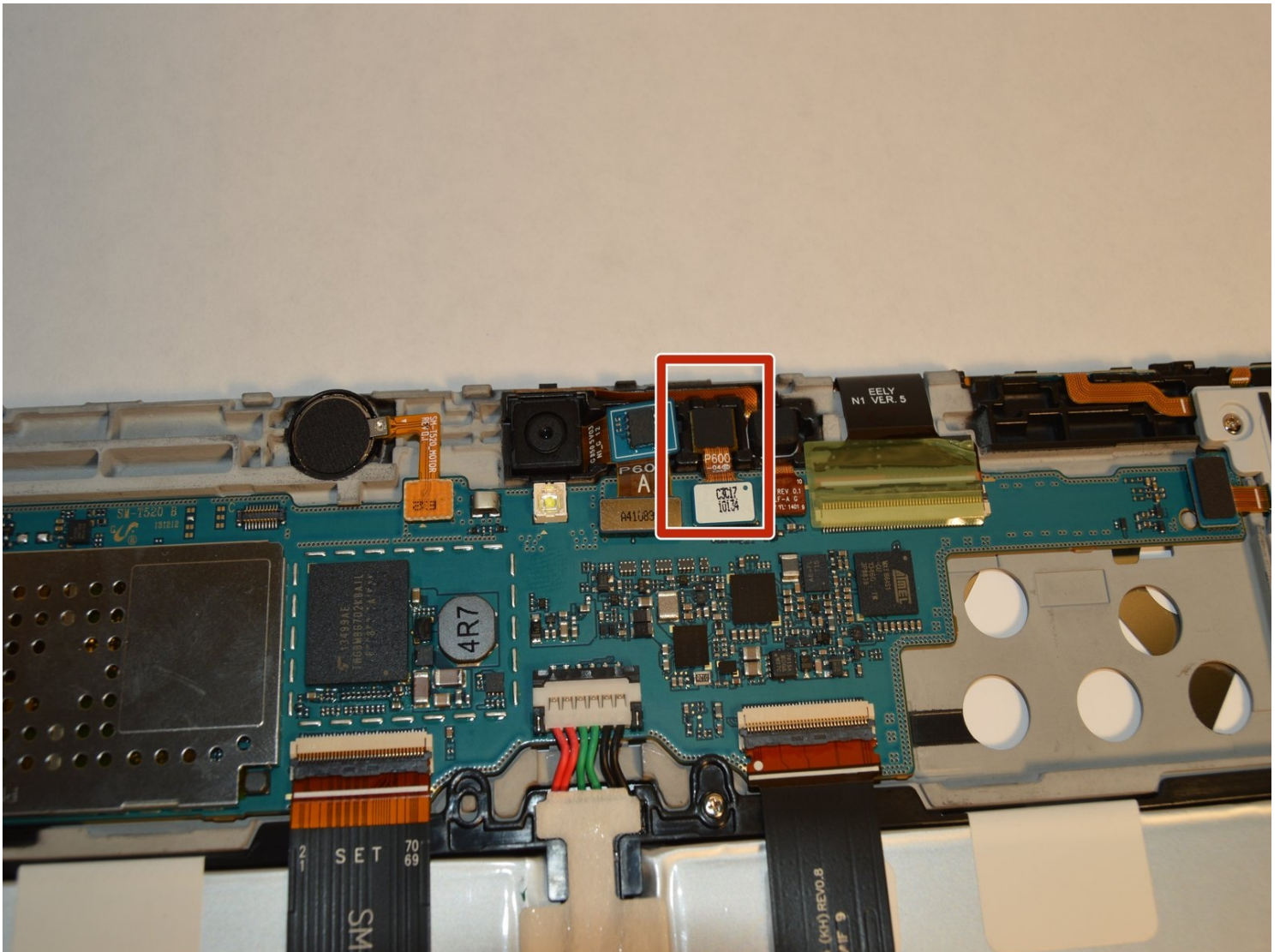




Samsung Galaxy Tab Pro 10.1 Front Facing Camera Replacement

This guide will show how to replace the front...

Written By: Stephen Yeung



INTRODUCTION

This guide will show how to replace the front facing camera on the Samsung Galaxy Tab Pro 10.1.

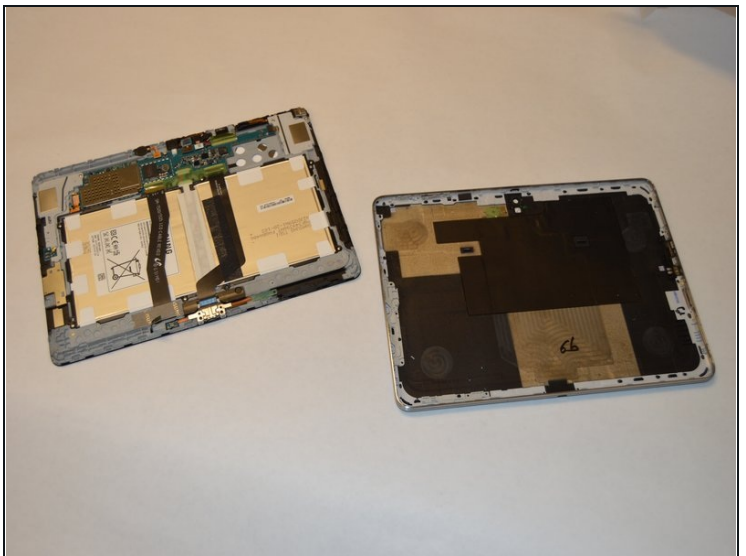
TOOLS:


Metal Spudger Set (1)
iFixit Opening Tool (1)
iFixit Precision Bit Driver, Aluminum (1)
Tweezers (1)
Phillips #00 Screwdriver (1)

PARTS:

Galaxy Tab Pro 10.1 Front Camera (1)

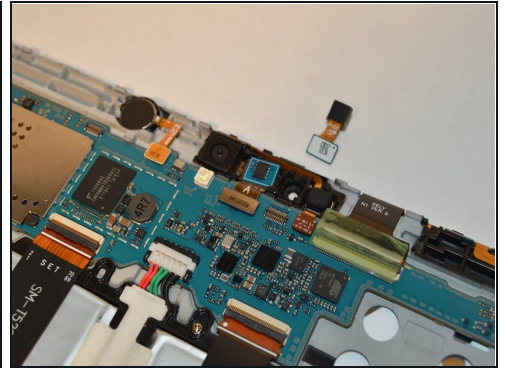
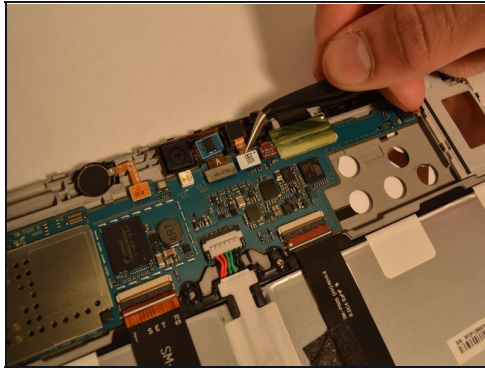
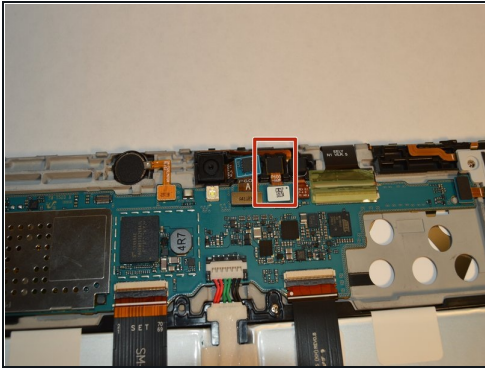
Step 1 — Rear Panel



 Be gentle, the front panel is connected to sensitive wiring that may snap if too much pressure is applied.

- Insert a plastic opening tool into the crevice between the screen and the side of the tablet.
- Go around the entire crevice with the plastic opening tool.
- Set aside the separated front and rear panels of the device.

Step 2 — Front Facing Camera



- Use plastic [tweezers](#) to carefully detach the front-facing camera from the motherboard.

To reassemble your device, follow these instructions in reverse order.