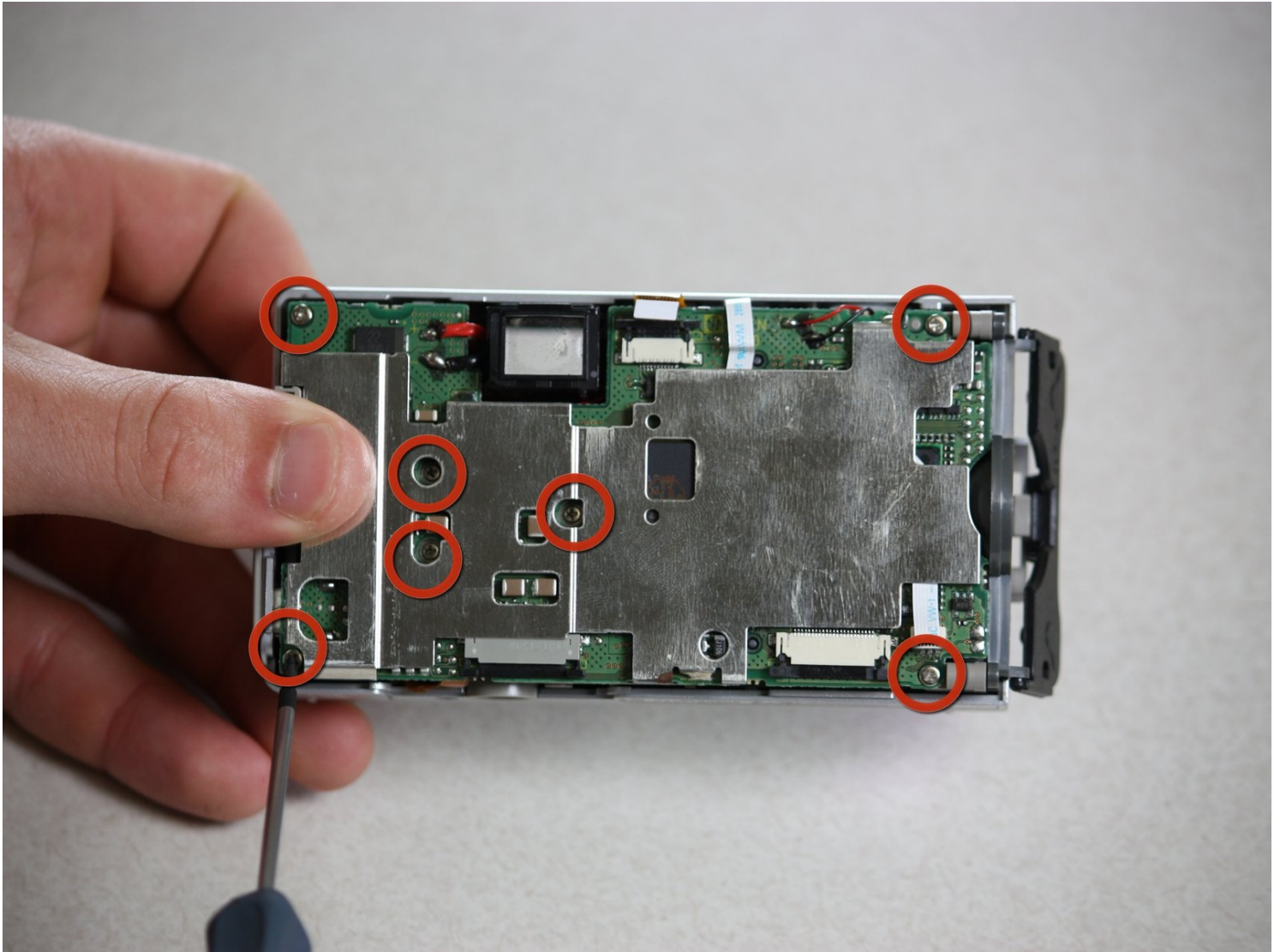




Canon PowerShot A200 Camera Lens Replacement

If your Canon PowerShot A200 camera's lens is...

Written By: William Starr



INTRODUCTION

If your Canon PowerShot A200 camera's lens is damaged or not properly functioning, use this guide to replace the lens.

A camera's lens is required in order to successfully take a photo. A camera lens may become damaged over time through heavy wear and tear, or if the camera is dropped and the lens becomes scratched or shattered. If your camera's lens no longer functions to its fullest potential, consider replacing the lens for ideal photography.

Before using this guide, locate the camera lens, which can be found on the front side of the overall case. This guide is intended for users familiar with the Canon PowerShot camera or users who have prior experience fixing cameras.

It is important to be gentle when removing any piece of the camera from the body. To ensure all pieces do not become damaged or lost, place all small parts in a safe space while working on the camera.

TOOLS:

[Tweezers](#) (1)

[Phillips #00 Screwdriver](#) (1)

[iFixit Opening Tool](#) (1)

Step 1 — Disassembling the Canon PowerShot A200 Case



- Use a Phillips #00 screwdriver to remove the two screws at the bottom of the camera.

Step 2



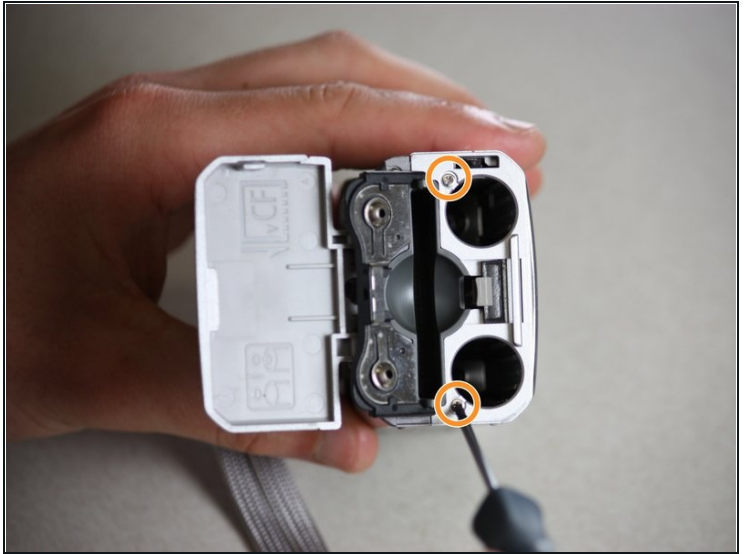
- Locate a screw and a rubber covering on the left side of the camera. Slide the rubber covering to expose a second screw.
- Remove both screws with the Phillips #00 screwdriver.

Step 3



- Open the battery compartment on the right side of the camera by pushing slightly in the direction of the arrow.
- ⓘ Be sure to remove the memory card.
- Remove the two screws by the memory card slot using the Phillips #00 screwdriver.

Step 4



- Pull the grey tab towards the back of the camera. Lift the black cover to expose the battery slots.
- Remove the two visible screws with the Phillips #00 screwdriver.
- ☑ During reassembly, the holes for these screws must align properly with the *interior* of the camera body. Then the black battery cover must lie flat and be held in place by the grey tab.

Step 5



- Remove the screen battery located to the left of the screen.

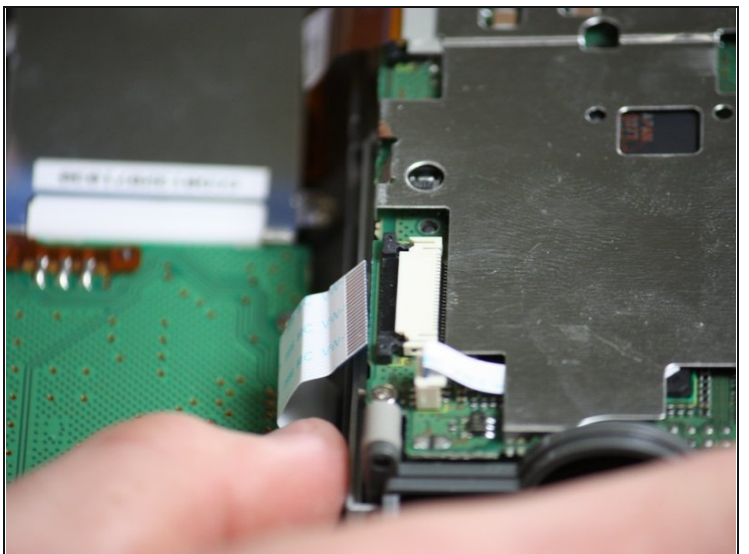
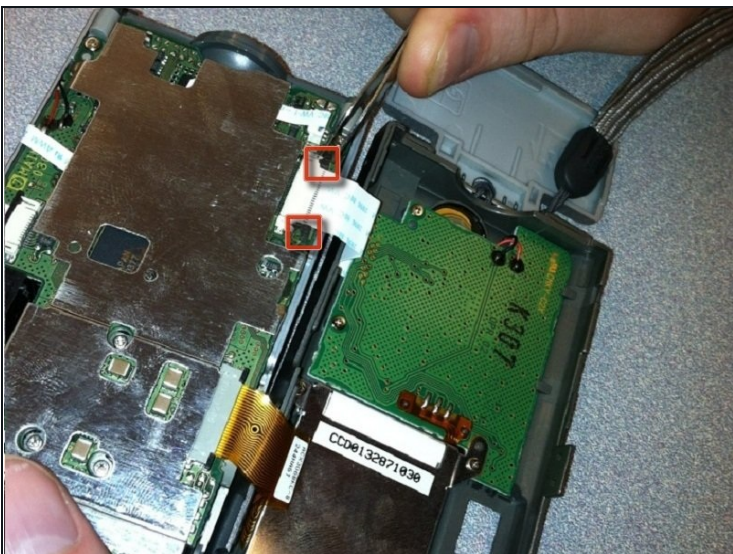
Step 6



- Gently pull the camera apart from the top.

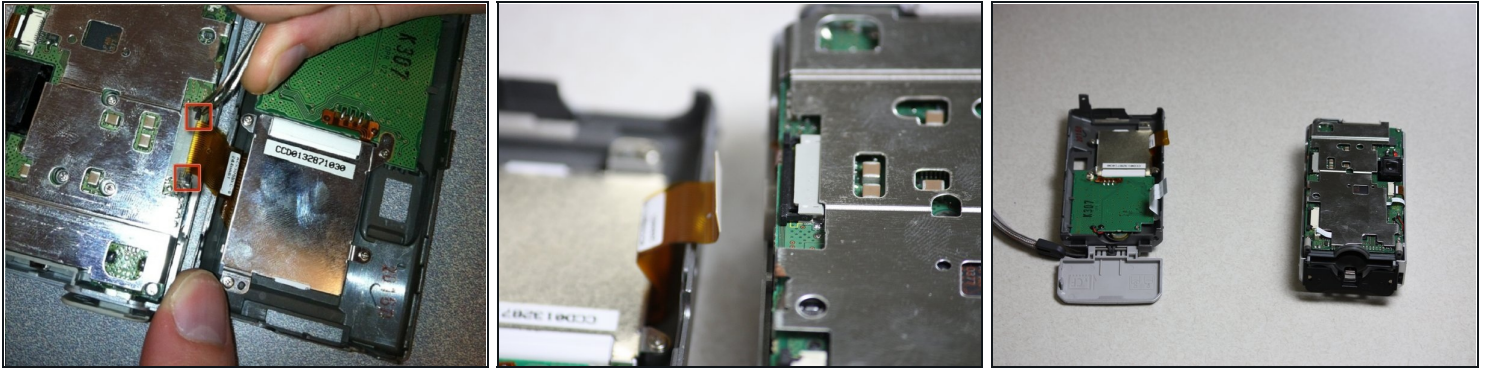
⚠ Be careful. The two halves are still attached by two short ribbons at the bottom of the camera.

Step 7



- Locate the black tabs on either side of the white ribbon.
- Use the metal [tweezers](#) to gently move these tabs to the outside edges of the ribbon.
- Gently pull the white ribbon out from its connection.

Step 8



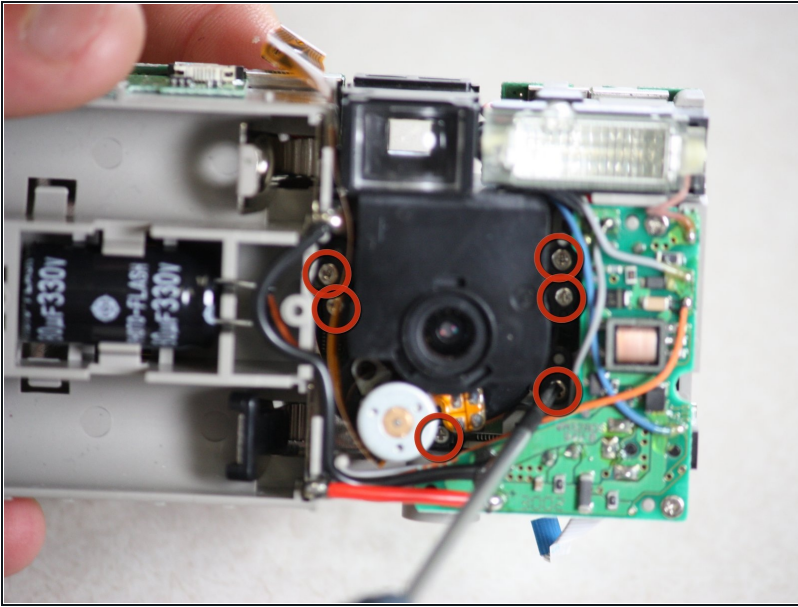
- Locate the black tabs on either side of the orange ribbon.
 - Use the metal tweezers to gently move these tabs to the outside edges of the ribbon.
 - Gently pull the orange ribbon out of its connection.
- ① Your camera will now be in two separate pieces.

Step 9 — Camera Lens



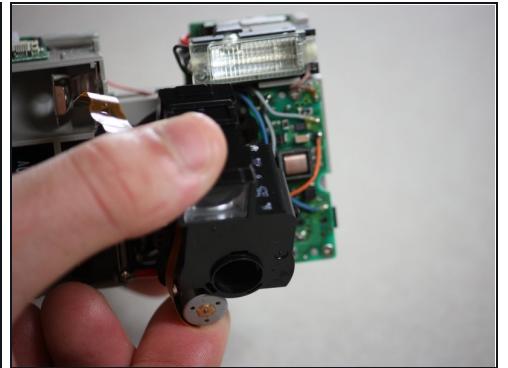
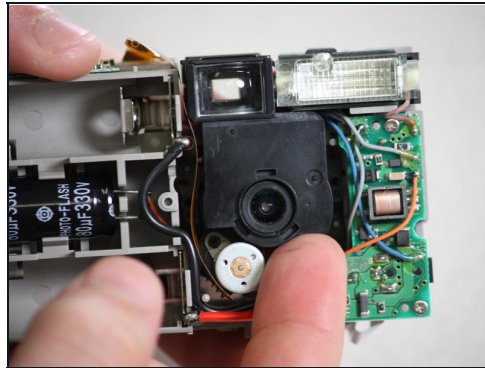
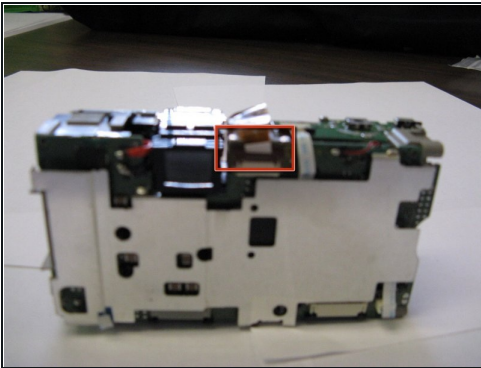
- Use the Phillips #00 screwdriver to remove the seven screws holding the camera body to the case.
- Pull out the camera body from the camera casing.
- Use the metal [tweezers](#) to unplug the orange connector.

Step 10



- Use the Phillips #00 screwdriver to remove the six screws that secure the camera lens.

Step 11



- Use the metal tweezers to remove the orange ribbon from the top of the camera body.
- Gently remove the lens from the camera body.
- ① When removing the lens, be aware that small pieces may fall out.

To reassemble your device, follow these instructions in reverse order.