



MacBook Pro 15" Retina Display Mid 2015 SSD Replacement

Use this guide to upgrade or replace the...

Written By: Sam Goldheart



INTRODUCTION

Use this guide to upgrade or replace the solid-state drive in a MacBook Pro 15" Mid 2015. This MacBook Pro uses a [proprietary storage drive connector](#), and is therefore **not compatible** with common M.2 drives without the use of an adapter.

Before you perform this repair, if at all possible, [back up your existing SSD](#). Then, either familiarize yourself with [internet recovery](#) or [create a bootable external drive](#) so you'll be ready to install macOS onto your new drive and migrate your data to the new SSD.

Finally, we strongly recommend installing macOS 10.14 Mojave (or a later macOS) before replacing the original SSD from your MacBook Pro. Most new SSDs require updated storage drivers not found in versions of macOS prior to macOS 10.14 Mojave.



TOOLS:

- [P5 Pentalobe Screwdriver Retina MacBook Pro and Air](#) (1)
- [T5 Torx Screwdriver](#) (1)
- [Spudger](#) (1)



PARTS:

- [OWC Aura Pro X2 SSD](#) (1)
- [MacBook Pro 13" and 15" Retina \(2015\) SSD](#) (1)

Step 1 — Lower Case



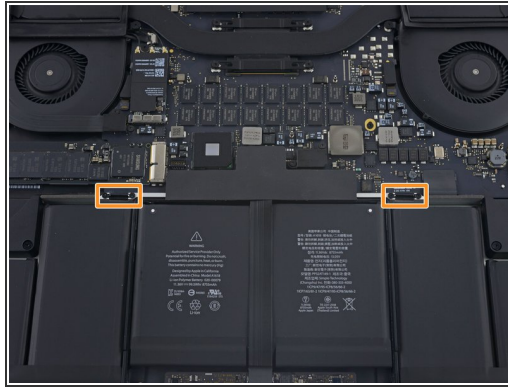
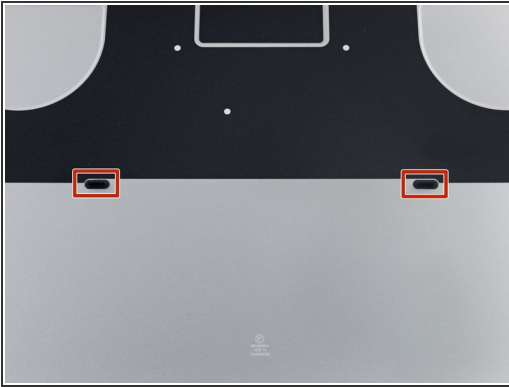
- Remove the following P5 pentalobe screws securing the lower case to the MacBook Pro:
 - Eight 3.1 mm
 - Two 2.3 mm



Step 2



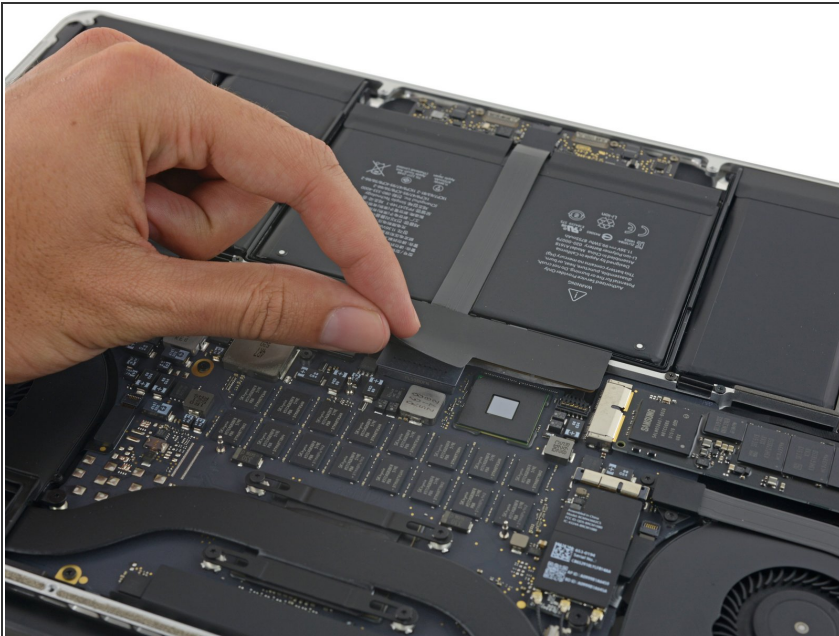
- Lifting from the edge nearest the clutch cover, lift the lower case off the MacBook Pro.

Step 3



-  The lower case has two plastic pegs (red) that fit into plastic clips in the upper case (orange).
-  During reassembly, gently push down the center of the lower case to reattach the case to its two plastic clips.

Step 4 — Battery Connector



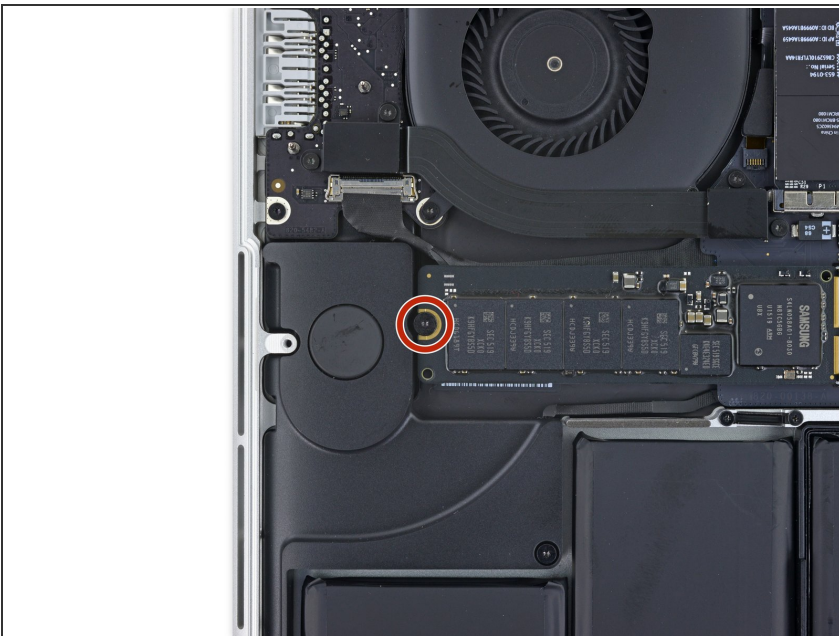
- Peel back the sticker covering the battery connector.

Step 5



- Gently lift each side of the battery connector to pry the connector out of its socket on the logic board.
- Bend the connector back toward the battery, ensuring that the battery connector doesn't accidentally make contact with the logic board.

Step 6 — SSD



- Remove the single 2.9 mm T5 Torx screw securing the SSD to the logic board.

Step 7



- Lift the end of the SSD up enough to pass over the speaker directly behind it.
⚠ Do not lift the SSD too high, or you could damage the contacts or socket.
- Pull the SSD straight out of its socket on the logic board.

To reassemble your device, follow these instructions in reverse order.