



Canon PowerShot S400 Battery Replacement

This guide illustrates how to remove the...

Written By: Adam Grijalva



INTRODUCTION

This guide illustrates how to remove the battery casing.

TOOLS:

Spudger (1)

Phillips #00 Screwdriver (1)

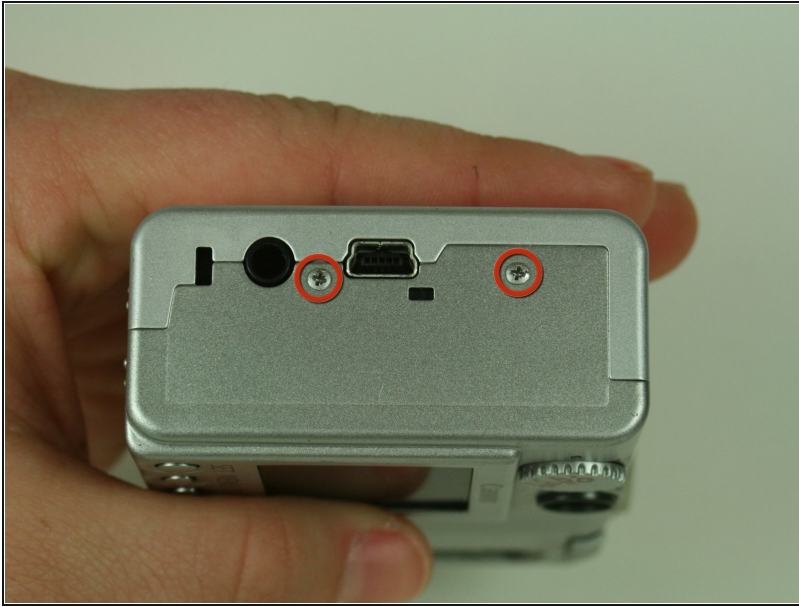
Step 1 — LCD Screen



① Unless stated otherwise, use a Phillips #00 screwdriver to remove all screws.

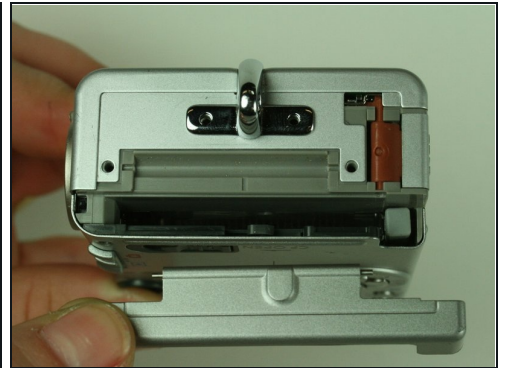
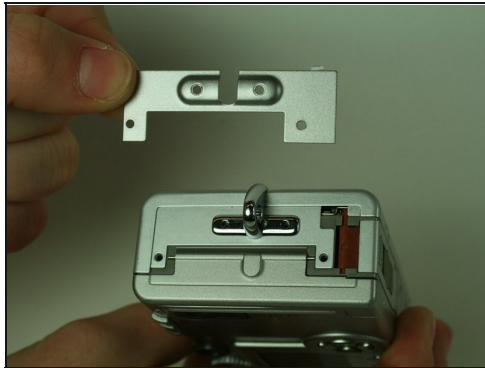
- On the backside of the camera, remove the 4.75 mm screw that sits at the top right corner.
- Remove the four 4.75 mm screws that sit at the bottom of the camera.

Step 2



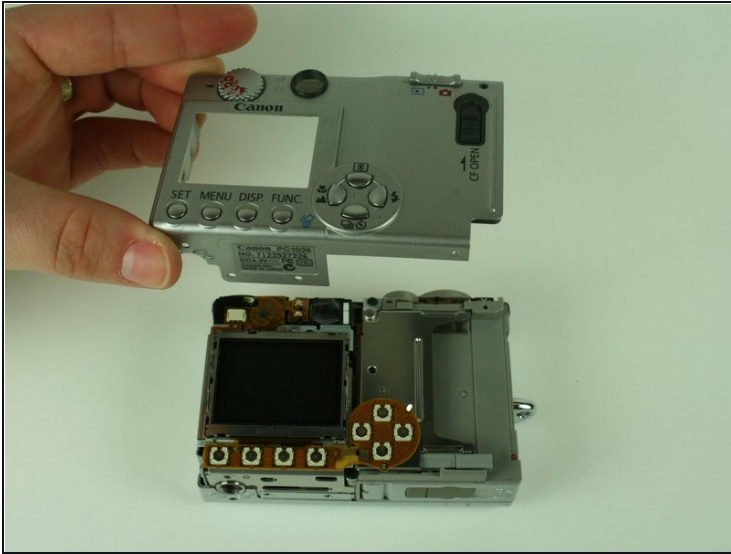
- On the side of the camera, remove the two 4.75 mm screws that sit near the USB digital terminal.

Step 3



- On the side of the camera, remove the four 4.75 mm screws that sit near the wrist strap mount.
- Remove the two small metal plates, which the four screws hold in place.

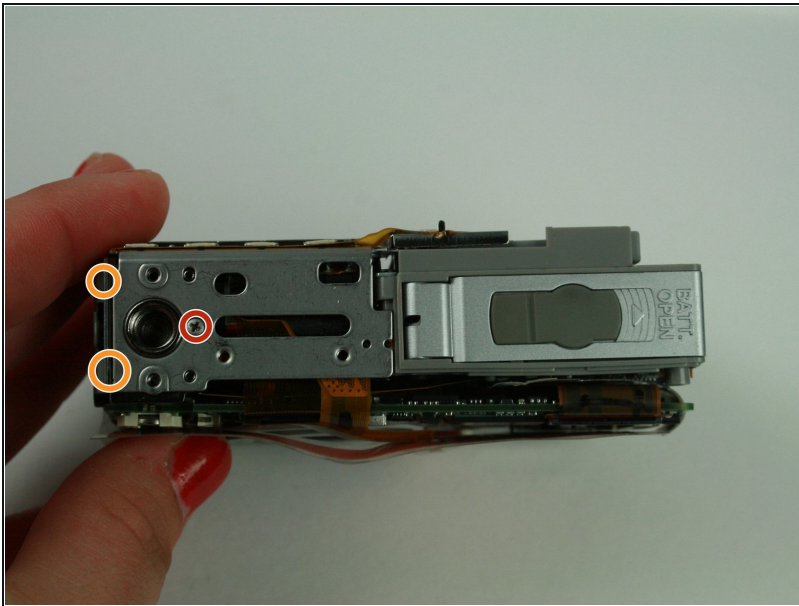
Step 4



⚠ When removing the casing, do not drop the small black plastic piece. This piece sits in a small gap above the lens, to the left of the flash, and underneath the camera case.

- Remove the small black plastic piece and set it aside. If necessary, use [tweezers](#) to remove the small black plastic piece.
- Detach the front case and back case.

Step 5

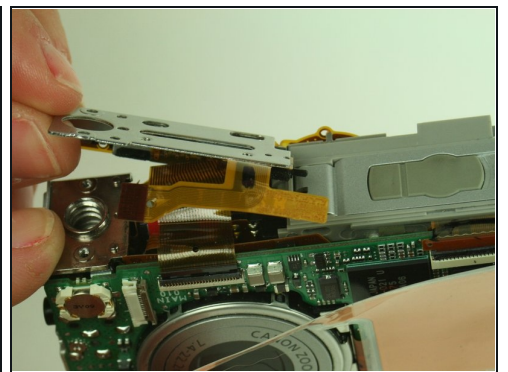
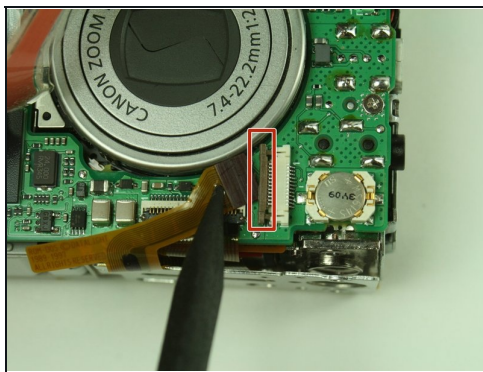
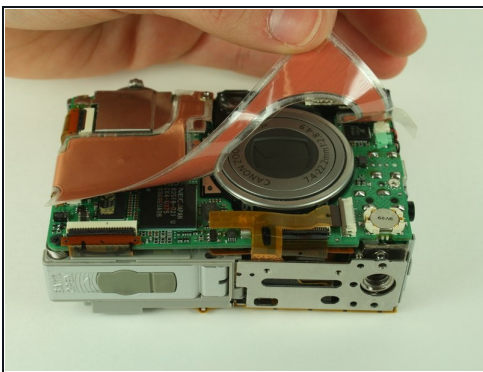


⚠ Do not remove the metal plate this step refers to. Removal at this step may damage the ribbon cable. Wait until the next step to remove the plate.

- Remove the 3.5 mm screw that sits on the metal plate at the bottom of the camera.
- Remove the two other 3.5 mm screws that sit on the side, to the left of the screw you just removed.

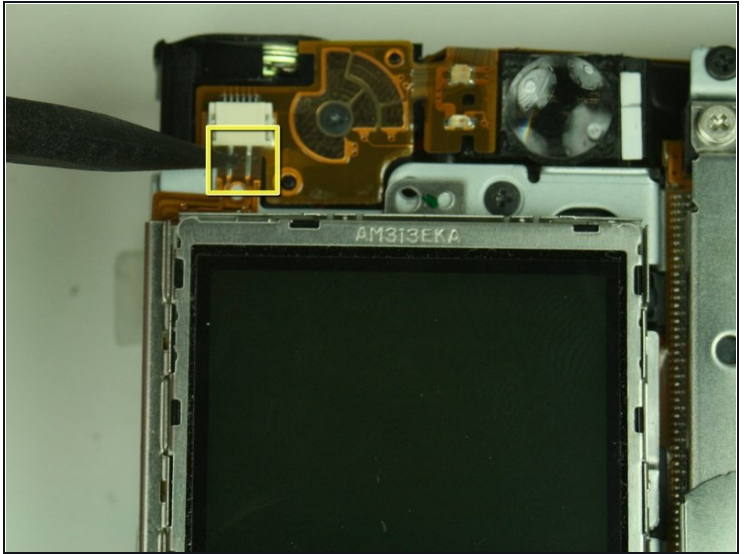
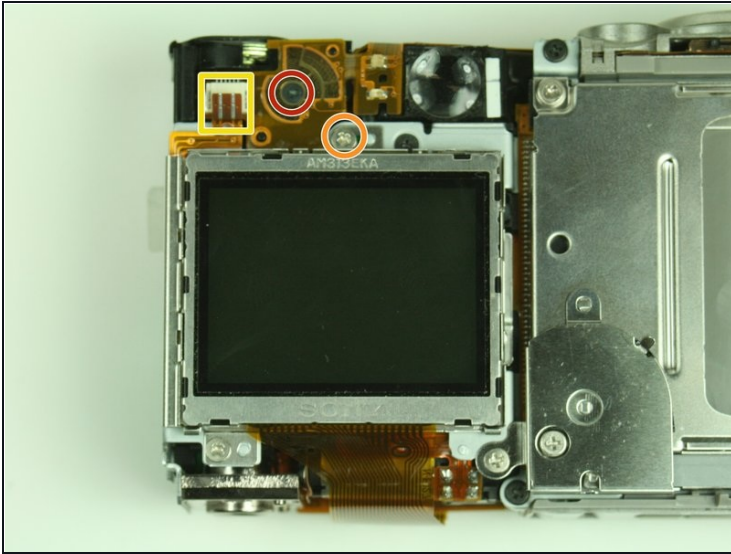
i In the image, we have already removed some of the screws.

Step 6



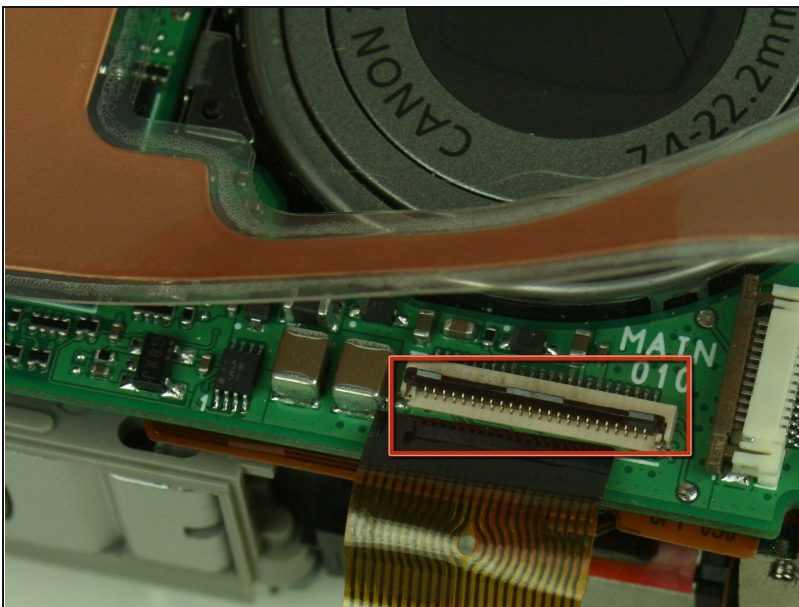
- A ribbon cable attaches to the metal plate and to the main circuit board, on the front of the camera.
- Gently release the black latch.
- Remove the ribbon cable and metal plate assembly.

Step 7



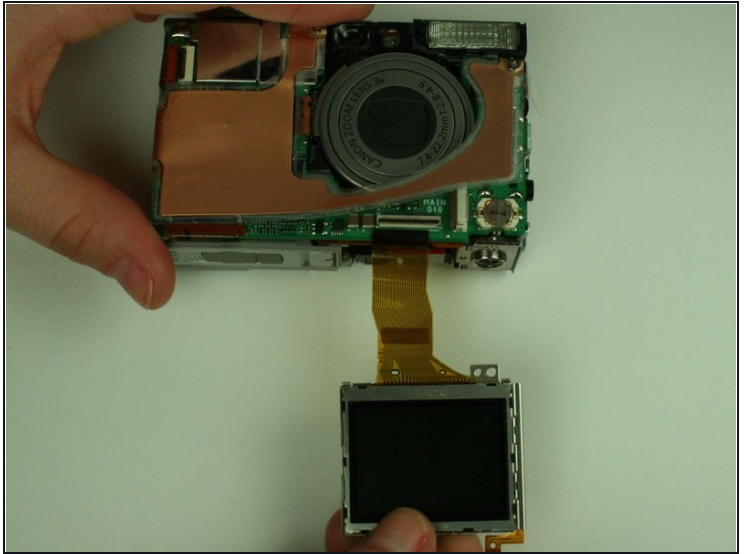
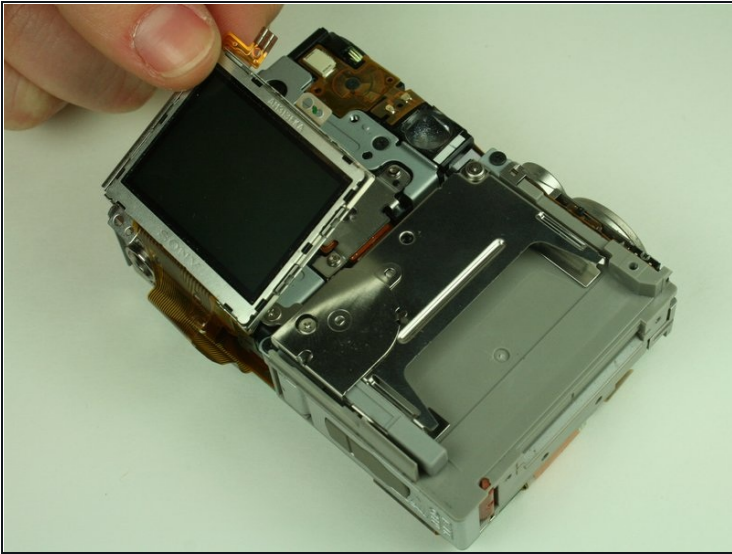
- On the backside of the camera, remove the 3.5 mm screw that sits to the left of the viewfinder and above the LCD screen.
- Remove the second 3.5 mm screw that sits directly above the LCD screen.
- Gently detach the ribbon cable.

Step 8



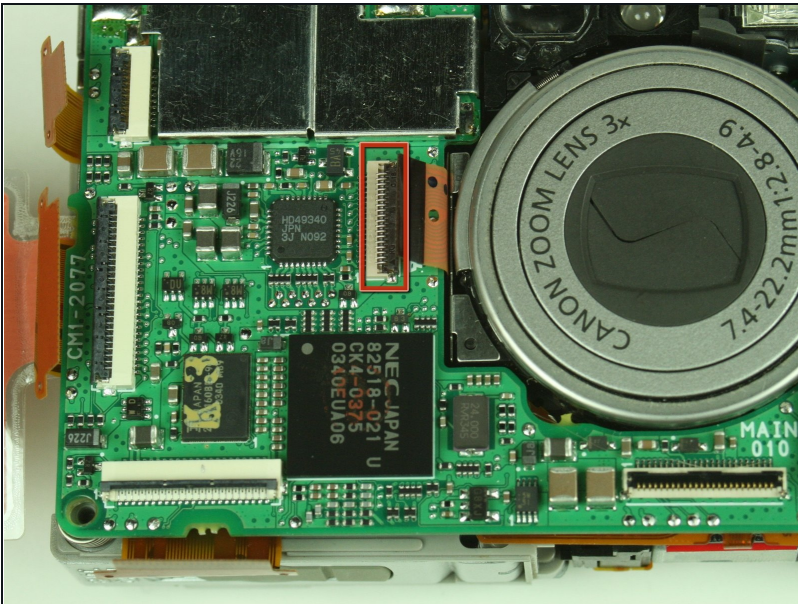
- Locate the ribbon cable on the main circuit board, which sits below the lens.
- Gently release the black latch on the ribbon cable connector and detach the ribbon cable.

Step 9



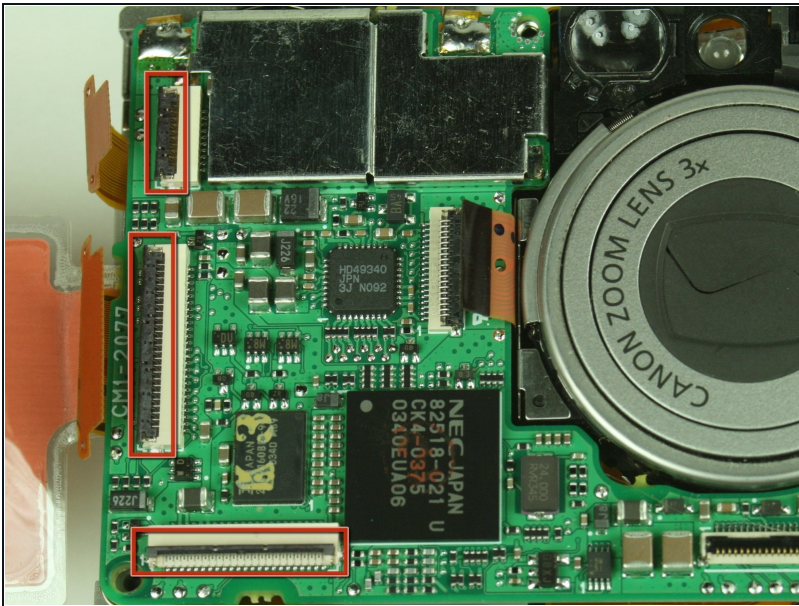
- Remove the LCD screen and set it aside.

Step 10 — Battery



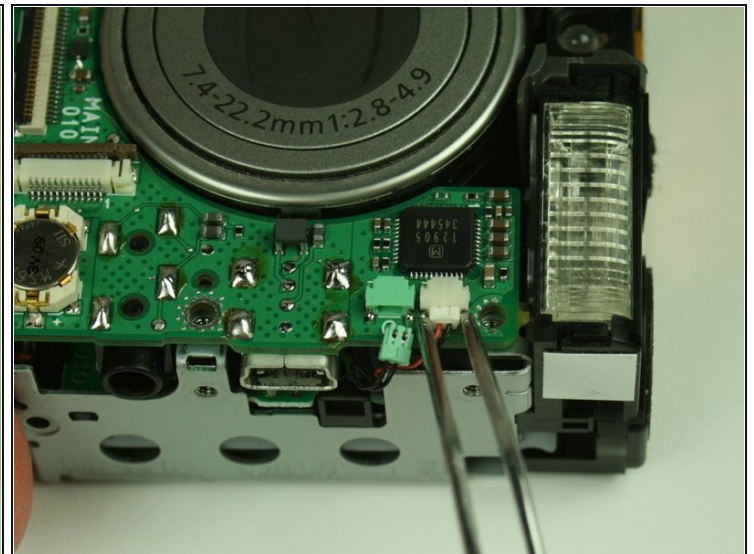
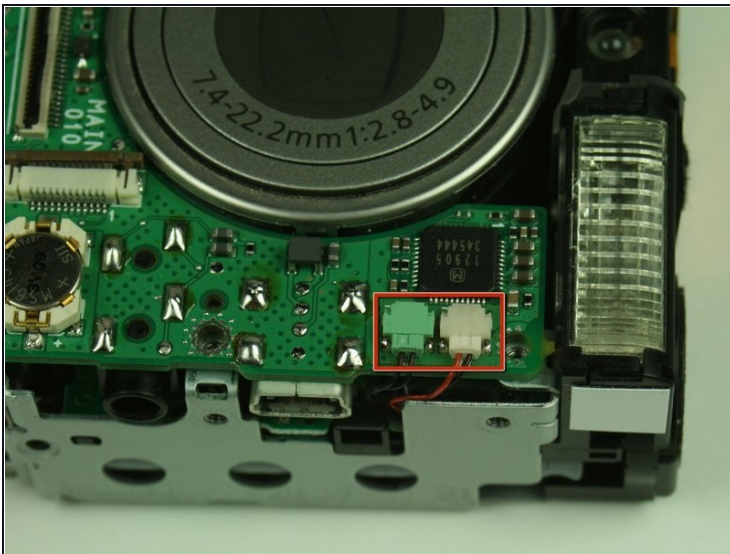
- Locate the ribbon cable connection to the left of the lens on the main circuit board.
- Gently flip open the black latch on the connector and detach the ribbon cable.

Step 11



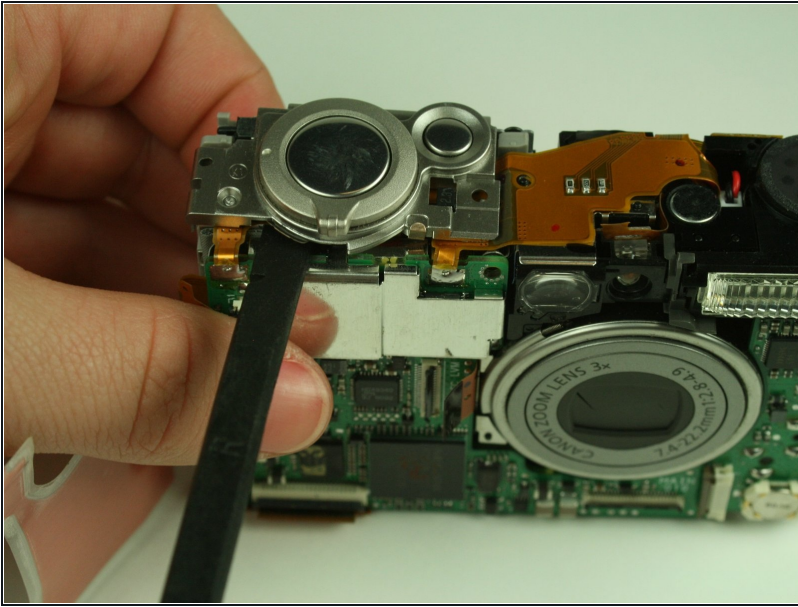
- Locate the three ribbon cables on the main circuit board. Gently flip open these black latches.
- Gently disconnect the ribbon cables.

Step 12



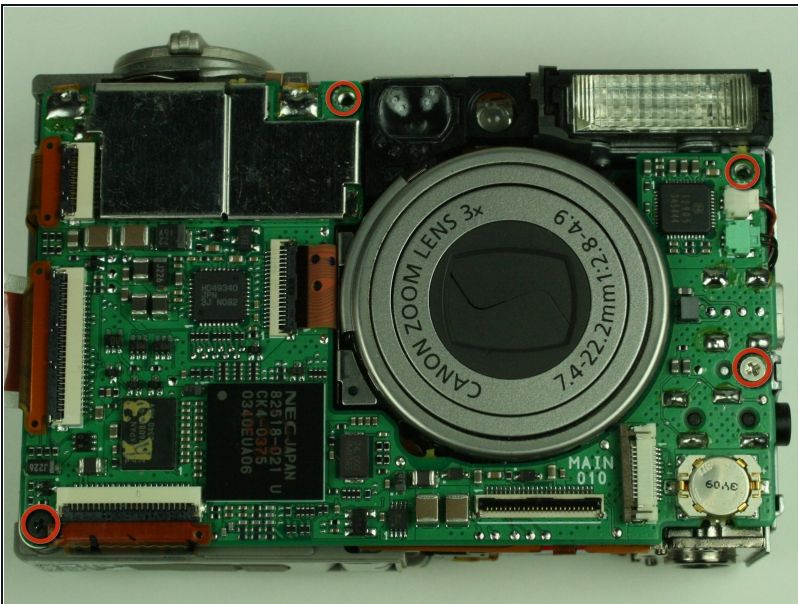
- Locate the white and green connectors underneath the flash.
- Gently disconnect these connectors.

Step 13



- Using a spudger, carefully pry the shutter button assembly from the camera.

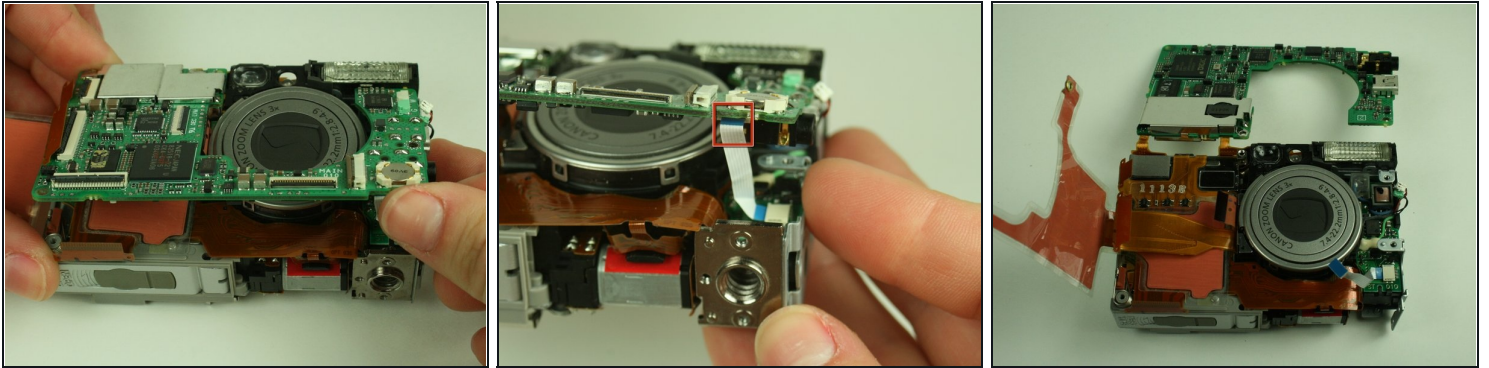
Step 14



- Remove the four screws securing the main circuit board to the rest of the camera. (In the image, some of the screws have already been removed)

⚠ Do not remove the main circuit board yet.

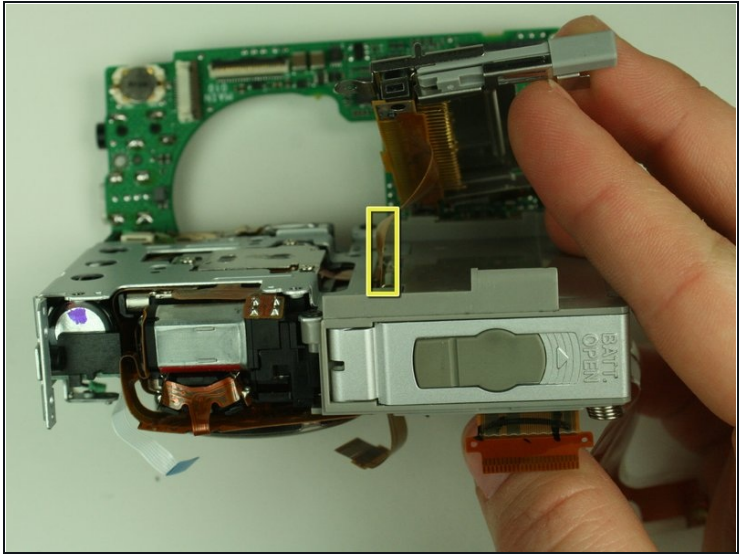
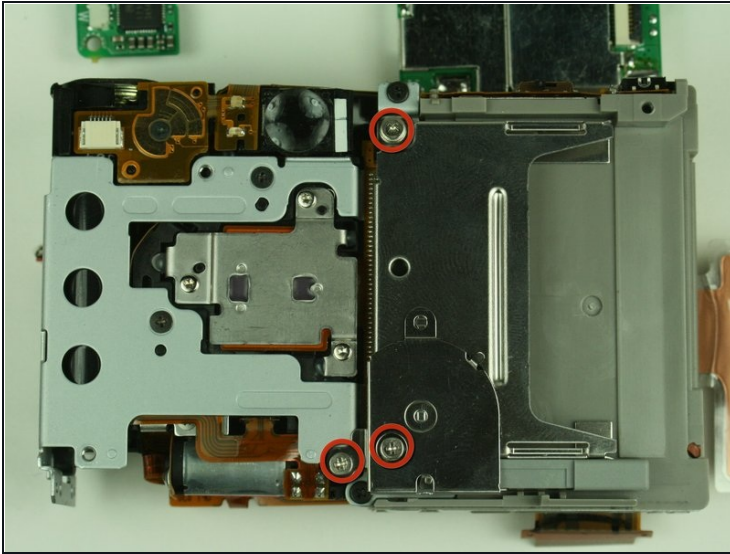
Step 15



⚠ Do not completely lift the circuit board off the camera. The circuit board is attached to the top of the camera by a soldered ribbon cable. Lifting the main circuit board off the camera will break these soldering points.

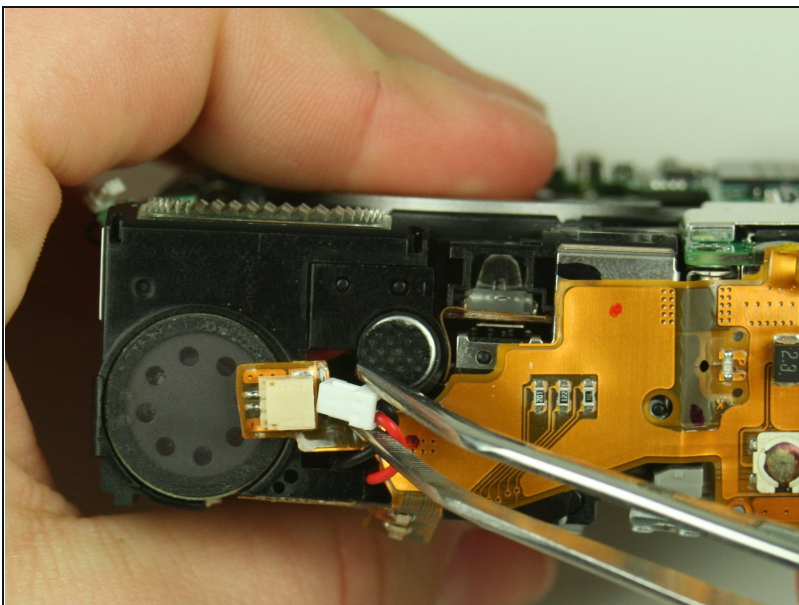
- Gently lift the bottom of the main circuit board, the side without the soldered attachment points, like a hinge.
- Locate the white ribbon cable attached to the underside of the main circuit board.
- Gently remove the white ribbon cable from the connector.

Step 16



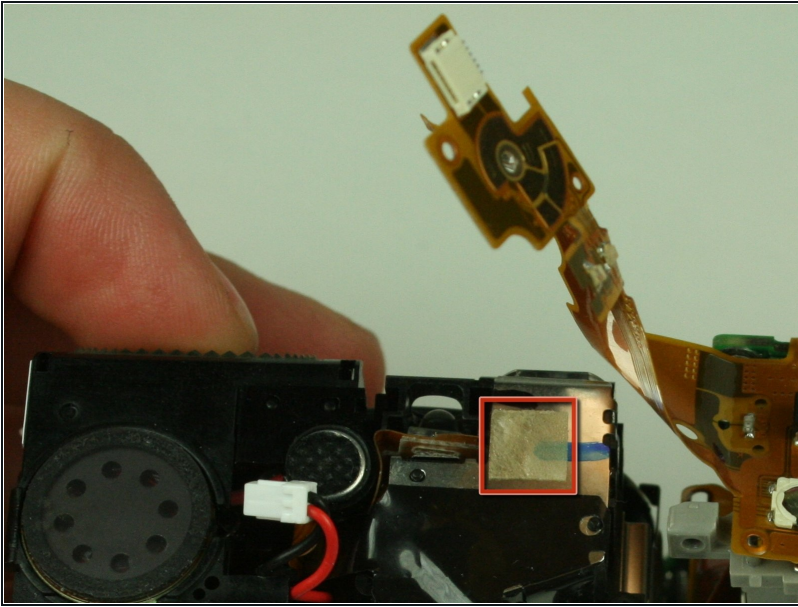
- Locate and remove the three 3.45mm screws on the backside of the camera that secure the CF card slot.
- Make note of the orientation of the ribbon cable connected to the CF card slot. You will need this for re-assembly.
- Gently remove the CF card slot.

Step 17



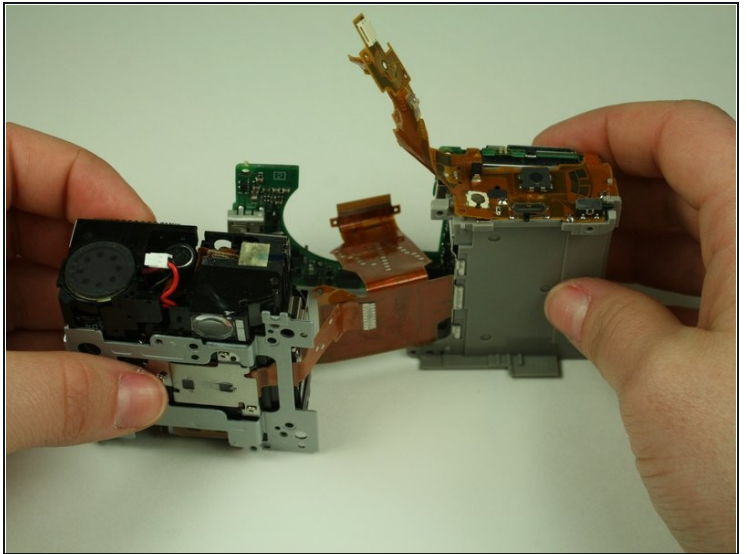
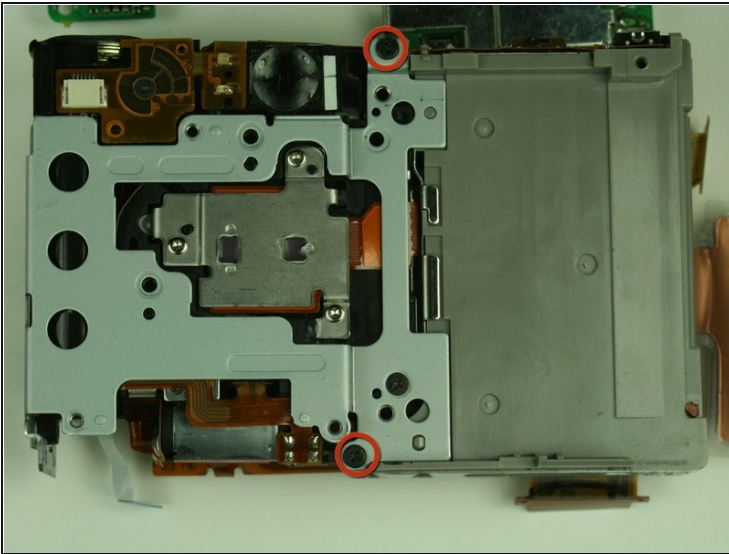
- Orient the camera so you are looking at the top.
- Locate the white connector that attaches the flex circuit to the capacitor.
- ① You may have to pull the connector out of a small space behind the flash bulb in order to access it.
- Disconnect the connector.

Step 18



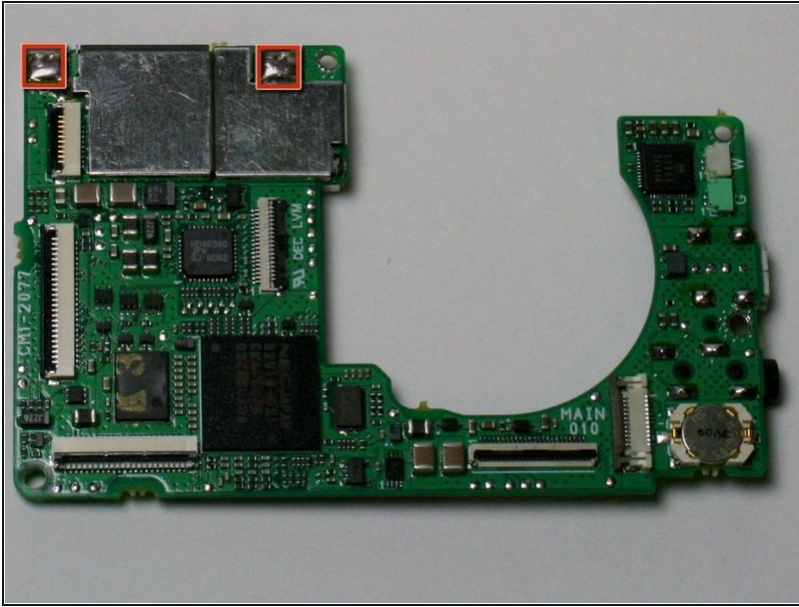
- Adhesive tape attaches the flex circuit to the top of the camera. Gently un-stick the flex circuit from the tape, but do not completely remove the flex circuit.

Step 19



- Remove the two 3.45mm screws located on the backside of the camera.
- Separate the battery compartment and the lens-flash assembly.

Step 20

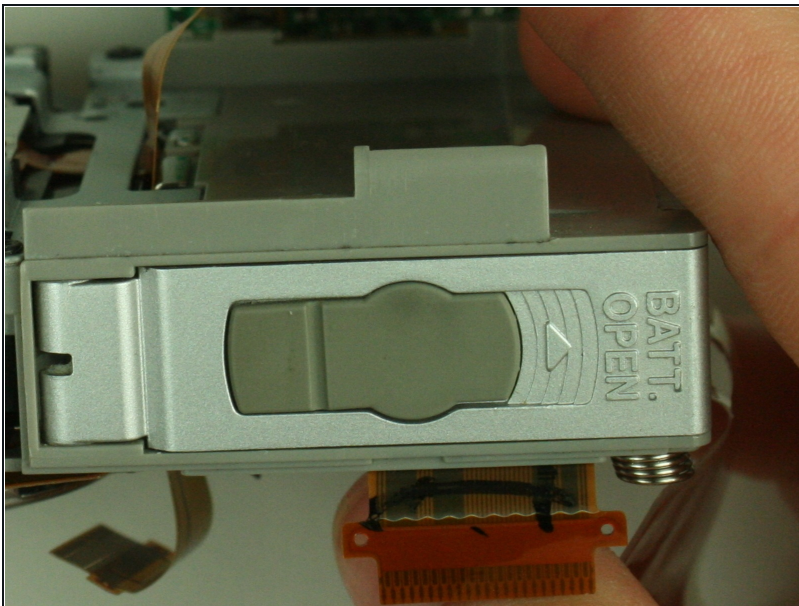


- Set the lens-flash assembly aside.

⚠ The next step requires the use of a soldering iron. Do not perform this step if you do not have experience soldering, you could permanently damage the mother board

- De-solder the two soldered ribbon cables attached to the motherboard.
- Separate the motherboard and battery case.

Step 21



- Replace battery casing

To reassemble your device, follow these instructions in reverse order.