



# Canon PowerShot S400 LCD Screen Replacement

This guide illustrates how to replace the LCD...

Written By: Ross Bryan



# INTRODUCTION

This guide illustrates how to replace the LCD screen on the Canon PowerShot S400.

## TOOLS:

Phillips #00 Screwdriver (1)

Spudger (1)

Tweezers (1)

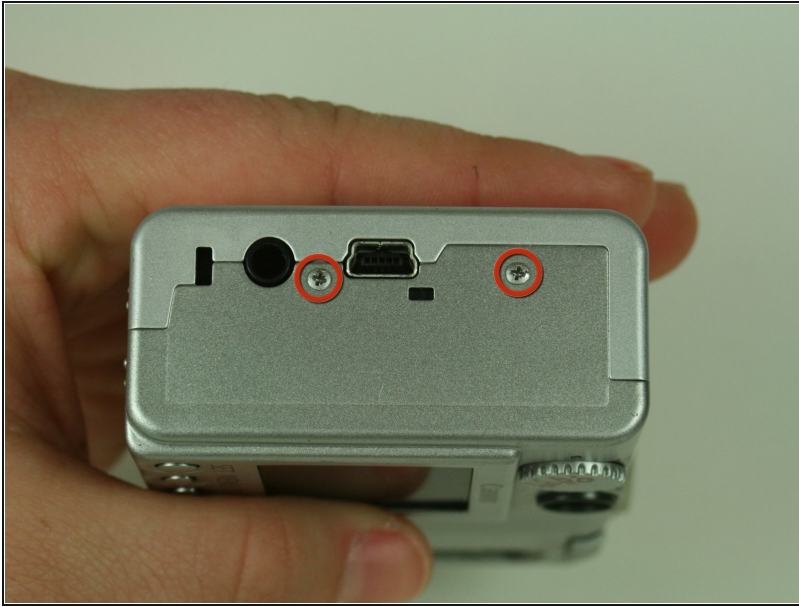
## Step 1 — LCD Screen



 Unless stated otherwise, use a Phillips #00 screwdriver to remove all screws.

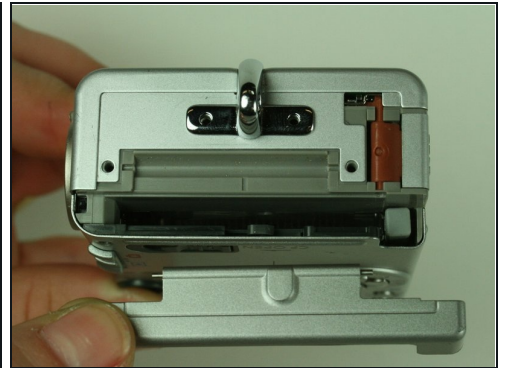
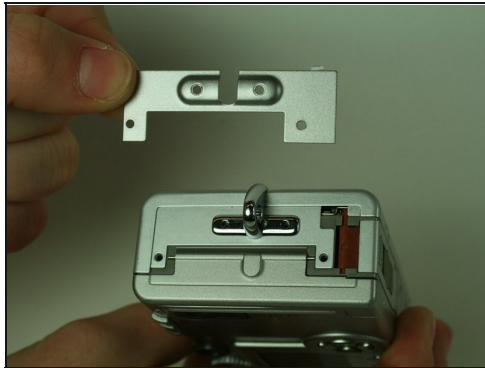
- On the backside of the camera, remove the 4.75 mm screw that sits at the top right corner.
- Remove the four 4.75 mm screws that sit at the bottom of the camera.

## Step 2



- On the side of the camera, remove the two 4.75 mm screws that sit near the USB digital terminal.

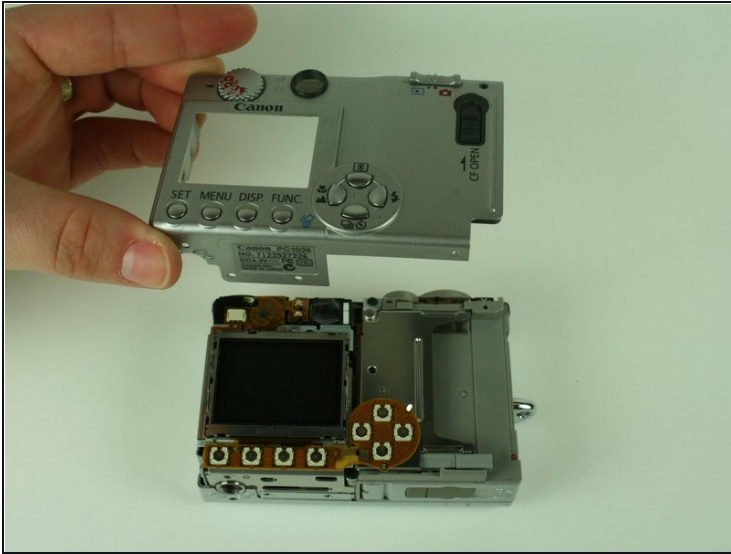
## Step 3



- On the side of the camera, remove the four 4.75 mm screws that sit near the wrist strap mount.
- Remove the two small metal plates, which the four screws hold in place.



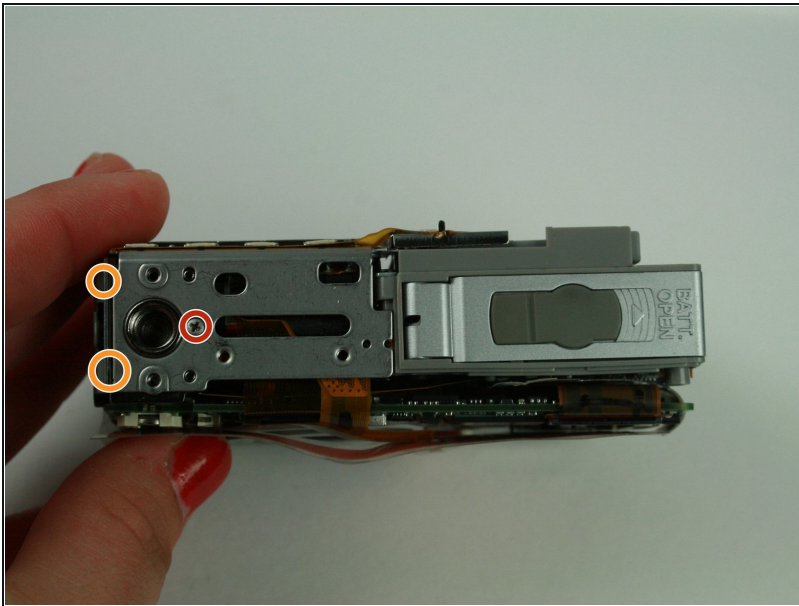
## Step 4



⚠ When removing the casing, do not drop the small black plastic piece. This piece sits in a small gap above the lens, to the left of the flash, and underneath the camera case.

- Remove the small black plastic piece and set it aside. If necessary, use [tweezers](#) to remove the small black plastic piece.
- Detach the front case and back case.

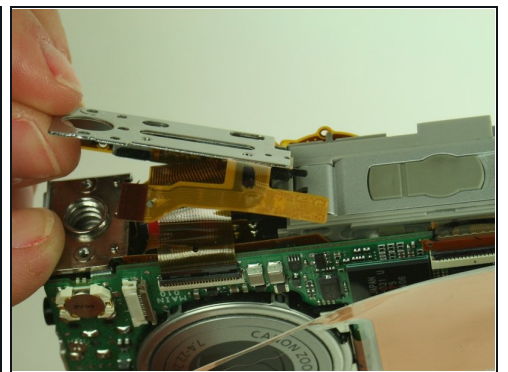
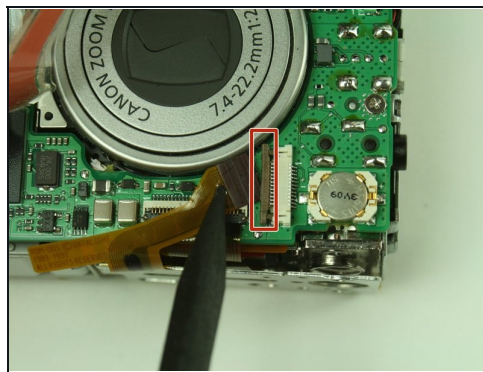
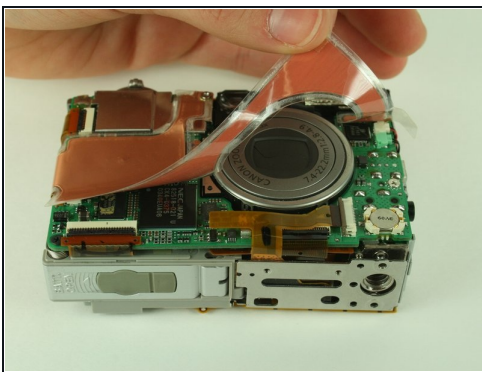
## Step 5



⚠ Do not remove the metal plate this step refers to. Removal at this step may damage the ribbon cable. Wait until the next step to remove the plate.

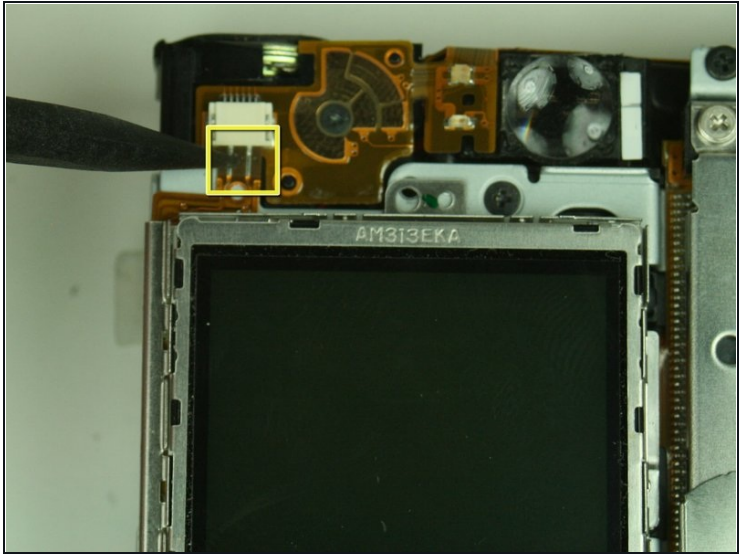
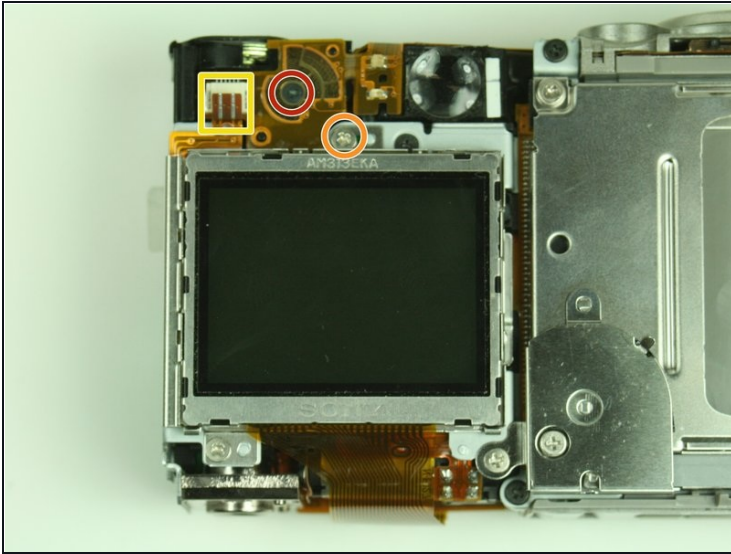
- Remove the 3.5 mm screw that sits on the metal plate at the bottom of the camera.
  - Remove the two other 3.5 mm screws that sit on the side, to the left of the screw you just removed.
- i In the image, we have already removed some of the screws.

## Step 6



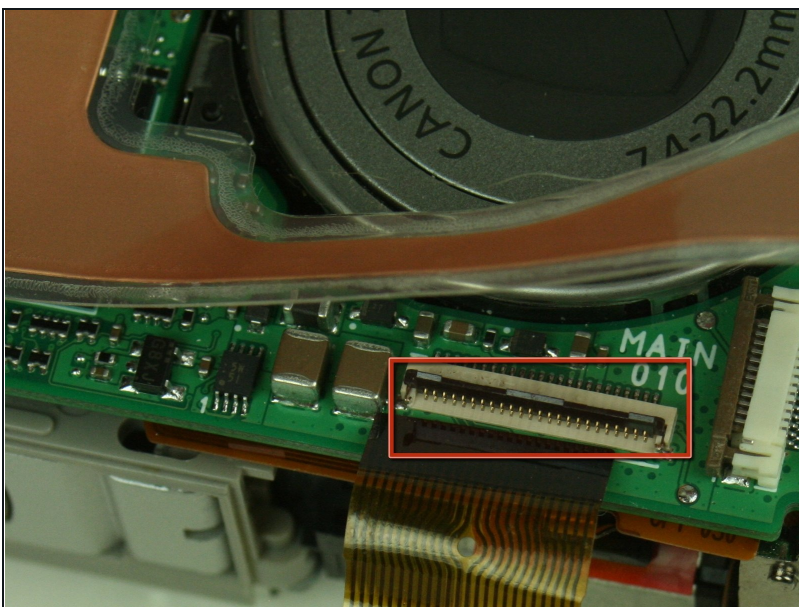
- A ribbon cable attaches to the metal plate and to the main circuit board, on the front of the camera.
- Gently release the black latch.
- Remove the ribbon cable and metal plate assembly.

## Step 7



- On the backside of the camera, remove the 3.5 mm screw that sits to the left of the viewfinder and above the LCD screen.
- Remove the second 3.5 mm screw that sits directly above the LCD screen.
- Gently detach the ribbon cable.

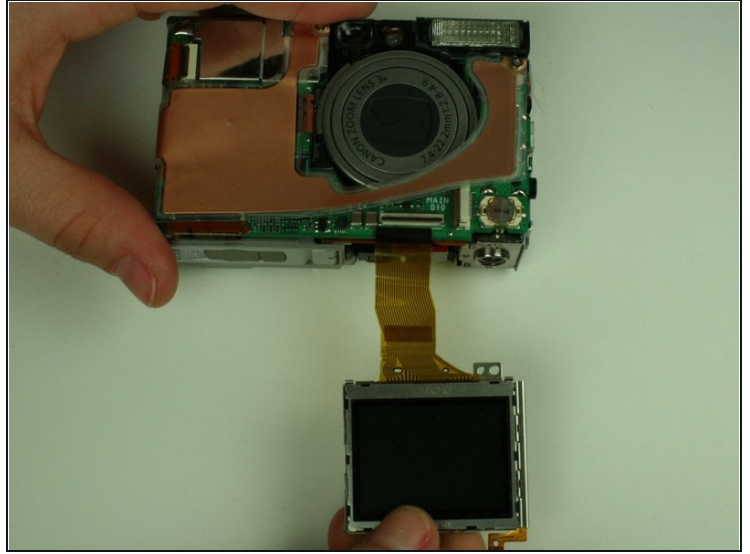
## Step 8



- Locate the ribbon cable on the main circuit board, which sits below the lens.
- Gently release the black latch on the ribbon cable connector and detach the ribbon cable.



## Step 9



- Remove the LCD screen and set it aside.

---

To reassemble your device, follow these instructions in reverse order.