



# Palm m500 Motherboard Replacement

This guide will detail how to disassemble the device and replace the motherboard.

Written By: Miles Johnson



---

## INTRODUCTION

Before you begin disassembly, be sure to have the necessary tools. You will need a Torx size T6 screwdriver, tweezers, and the device opening tool. You will be removing the stylus, the back panel, and the battery in order to access the motherboard.

---

### TOOLS:

- [T6 Torx Screwdriver](#) (1)
  - [Tweezers](#) (1)
  - [iFixit Opening Tools](#) (1)
-

## Step 1 — Back Panel



- Remove the stylus from the side of the PDA by sliding it upwards.

## Step 2

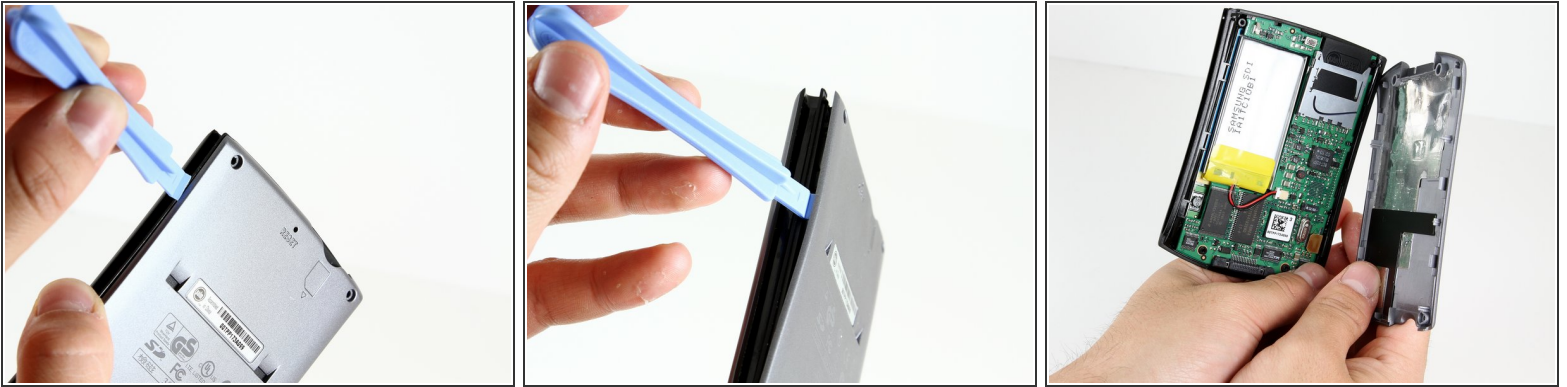


- Remove the 4 screws from the corners of the back panel of the device using a size T6 Torx screwdriver.

 Place screws in a plastic bag or another safe place.

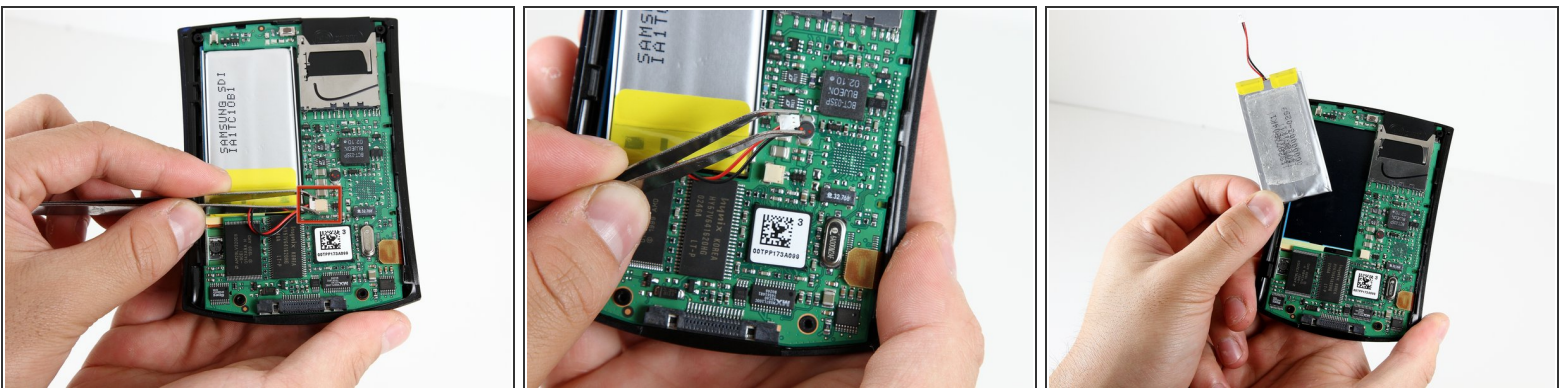


### Step 3



- Insert the edge of the plastic opening tool between the back panel and the black stylus holder.
- Carefully and forcefully pry the panels apart.

### Step 4 — Battery



- Use tweezers to unplug the battery cable from the motherboard socket.
- Gently remove the battery from the motherboard using your thumb and forefinger to pull upwards.
- i** The battery may be difficult to remove because of light adhesive on the back. It may require some force to pry the battery away from the motherboard with your fingers.

## Step 5 — Motherboard



- Use the plastic opening tool to pry the orange clamp away from the motherboard.
- Use the plastic opening tool at the bottom of the device to pry the motherboard away from the front plate.
- Gently and forcefully lift the motherboard away from the front plate by using your thumb and forefinger.

To reassemble your device, follow these instructions in reverse order.