



How to Upgrade RAM Memory On Your ASUS CM6870 Desktop PC and Run BIOS Upgrade


Written By: lilyxsu

crucial
by micron


search


store memory solid state drives community support


ASUS > ASUS Desktops > CM6870



ASUS CM6870 compatible upgrades
These upgrades are guaranteed compatible when you order from Crucial.com






compatible
memory




compatible
solid state drive

Your scanner ID: 7273598E31D926C3
save my scan | share my scan

Notes about your system:
Although the memory can be installed one module at a time, the best performance comes from using matched pairs of modules.

Compatible Memory sort



4GB DDR3 PC3-12800 Unbuffered NON-ECC 1.35V 512Meg x 64 \$25.99
CT3576527
DDR3 PC3-12800 • 9-9-9-24 • Unbuffered • NON-ECC • DDR3-1600 • 1.35V • 512Meg x 64 • Low Profile •
upgrade for ASUS CM6870 system.
qty 1 **add to cart**
☐ compare
add to wish list



4GB DDR3 PC3-12800 Unbuffered NON-ECC 1.5V 512Meg x 64 \$27.99
CTA1400A2
qty 1 **add to cart**

view more compatible memory upgrades

Your ASUS CM6870 system specs as shipped


memory

Maximum memory: 16384MB

Slots: 4 (2 banks of 2)

*Not to exceed manufacturer supported memory.

4GB 4GB Empty Empty

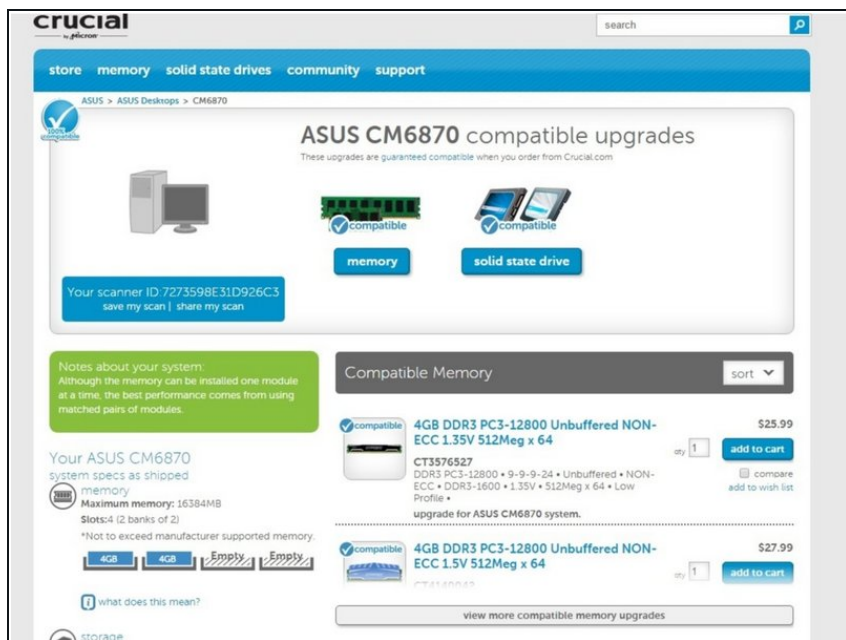
 what does this mean?

storage

INTRODUCTION

[video: <https://www.youtube.com/watch?v=YW2SIEmGvZI>]

Step 1 — Scan Your Machine for Space and Compatible Hardware



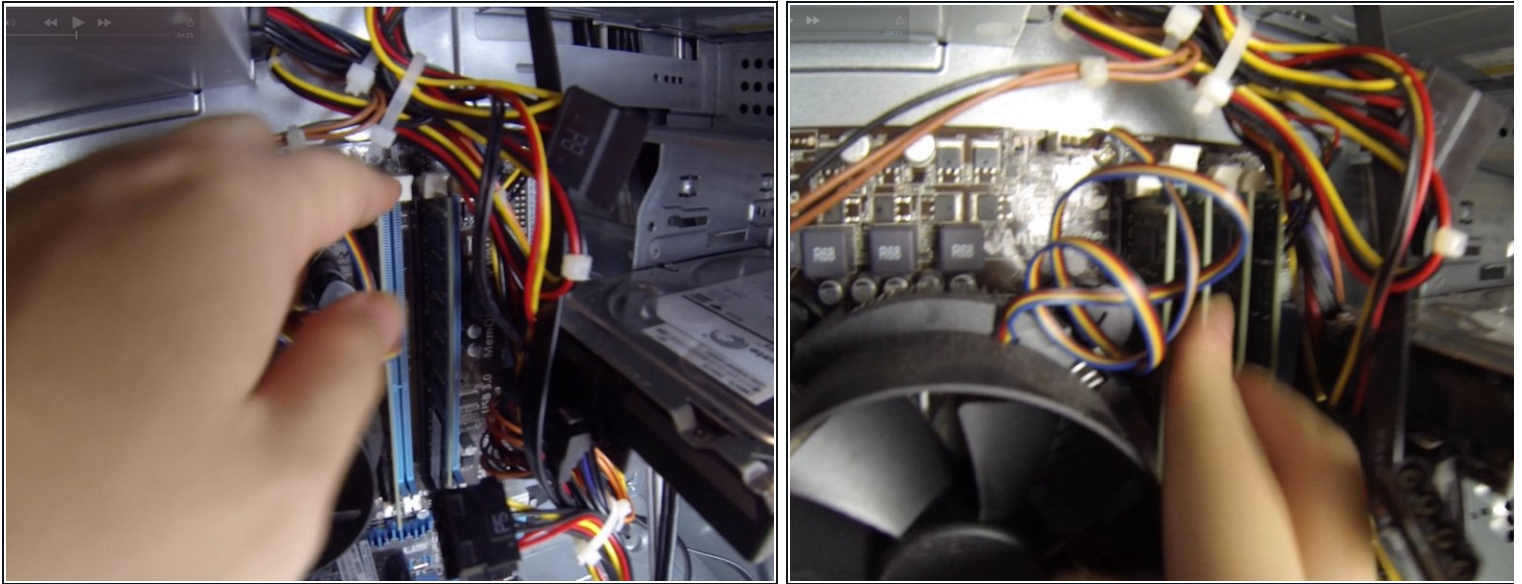
- I upgraded from a default 8GB RAM to 16GB after installing 2 4GB Memory cards that I bought from Crucial. Scan Your Machine For Compatible Memory to Purchase <https://www.crucial.com/>
- Order appropriate compatible parts.

Step 2 — Turn off PC and Open the Body



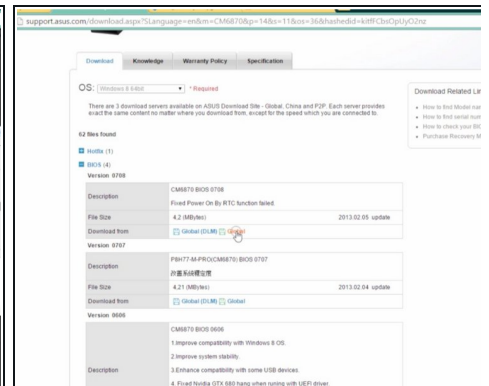
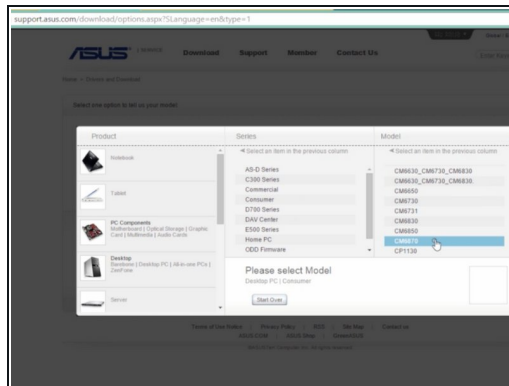
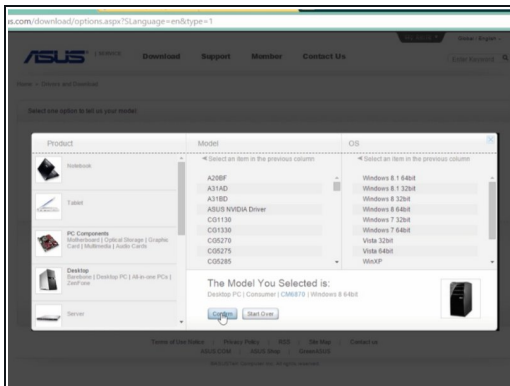
- Turn off your computer and unplug power cords.
- Slide Open Your PC to install the memory.

Step 3 — Insert the Memory



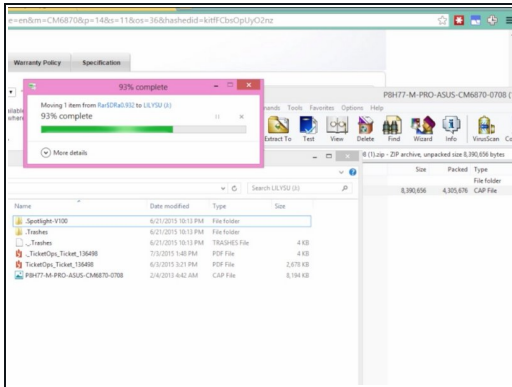
- Open your PC and unlock the slots. Insert the memory cards and lock the white end locks.

Step 4 — If Your System Does Not Recognize the Memory, Take it Out, Restart, and Download the BIOS Upgrade



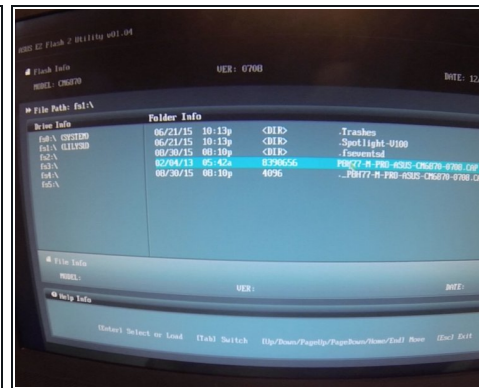
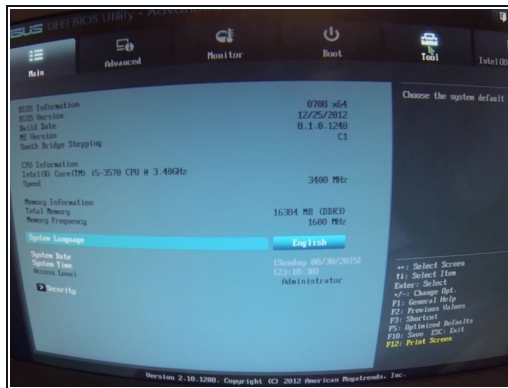
- After I snapped in the new parts, my computer could not fully boot up, so I took the components out, restarted my computer, and downloaded the latest BIOS Upgrade for my PC to a flash drive.
- Download BIOS Upgrade <http://support.asus.com/download>
- Manually find your computer and operating system. Download the latest BIOS Upgrade.

Step 5 — Run Your BIOS Upgrade



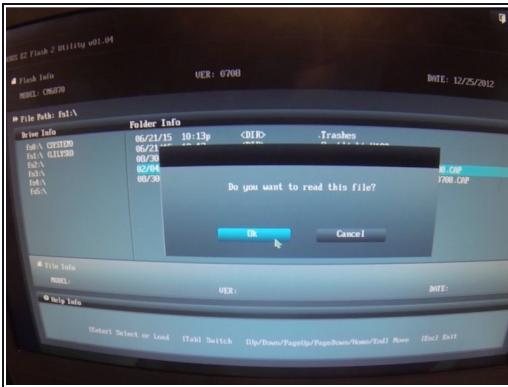
- Unzip the downloaded BIOS Upgrade
- Save the file to a USB
- Restart your computer. Press DELETE really fast to get to your BIOS settings.

Step 6 — BIOS Upgrade Screenshots Continued I



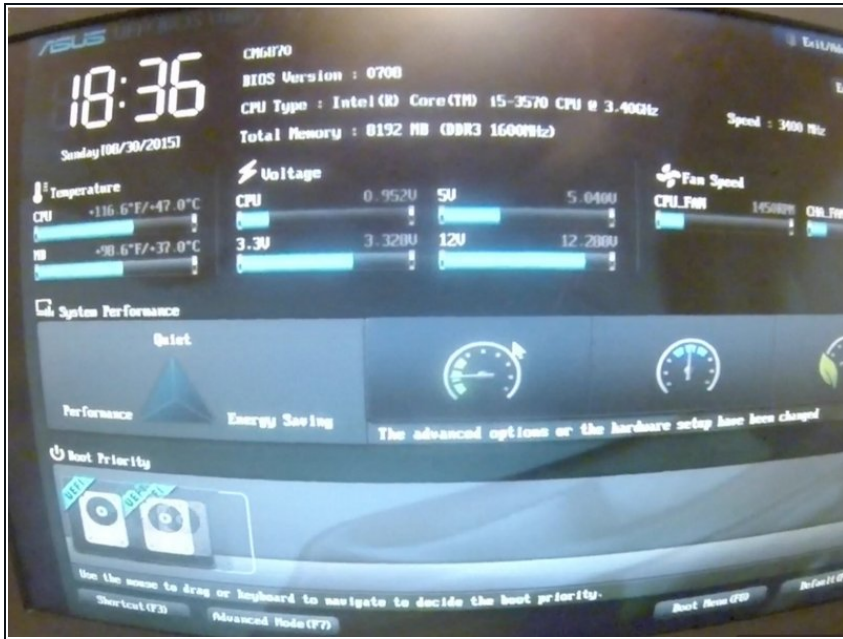
- Advanced Settings > Tools > USB > the file you just put into the flash drive

Step 7 — BIOS Upgrade Screenshots Continued II



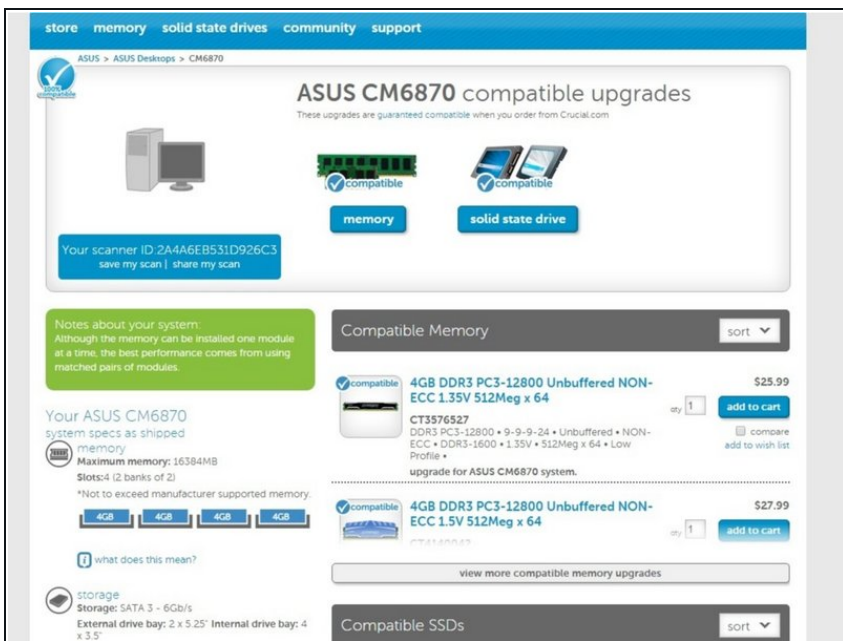
- Click 'OK' to run the file in your USB for the BIOS Upgrade.
- Once you run your BIOS upgrade, you will be directed to a new screen that lists the hardware you are connected to.
- Press F1 for setup

Step 8



- After you pressed F1 for Setup, you'll be directed to the BIOS settings again. Double check your startup disks are in the right priority for boot. Drag and drop to correct order.

Step 9 — Restart And Double Check Your Memory



- Exit BIOS to restart, and you should be good to go with your optimum memory.