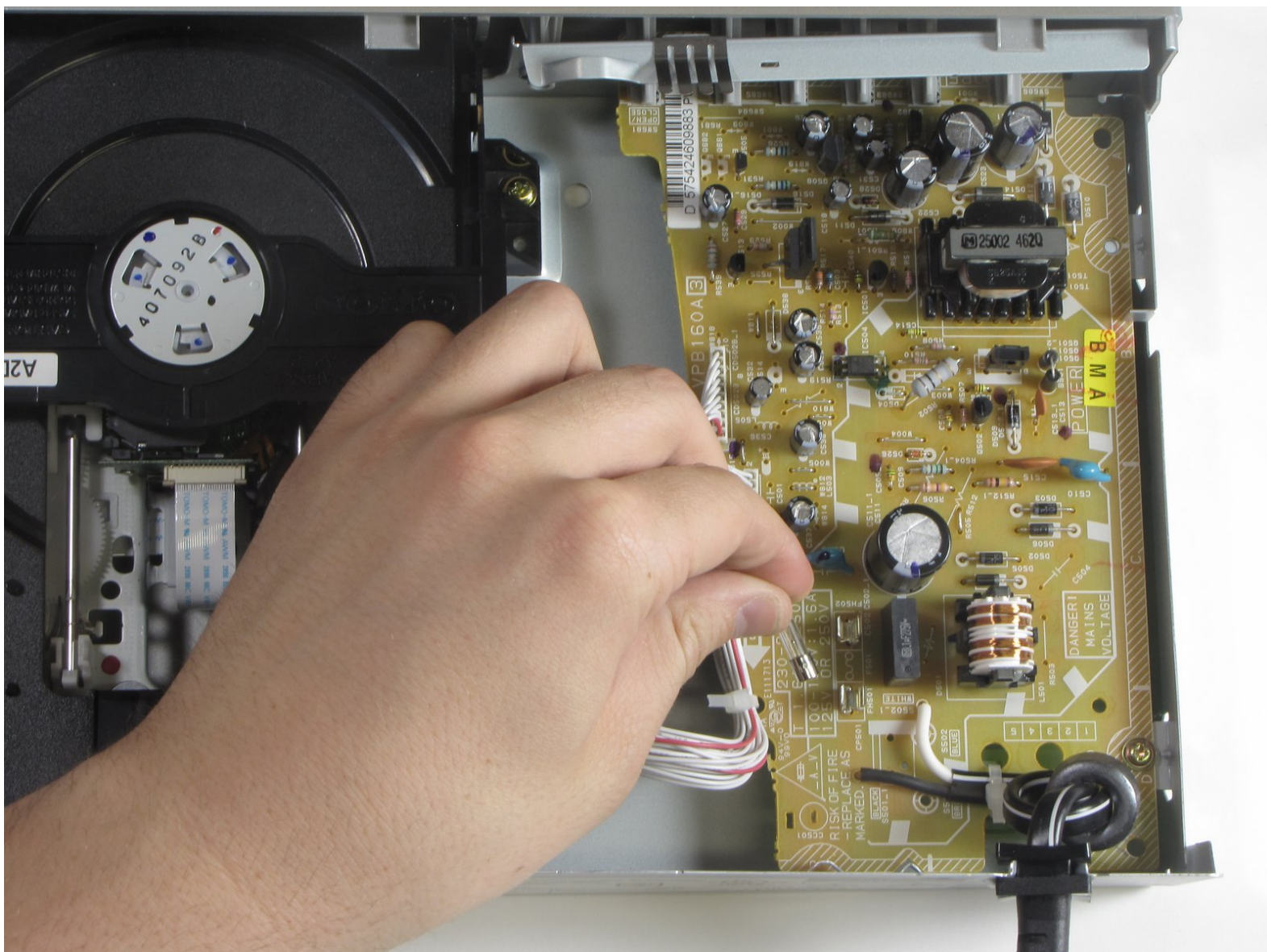




Toshiba SD-K740 Motherboard Fuse Replacement

This guide gives instructions on how to remove...

Written By: John Lokker



INTRODUCTION

This guide gives instructions on how to remove the fuse located on the yellow motherboard of the Toshiba SD-K740 DVD player.



TOOLS:

- [Phillips #0 Screwdriver](#) (1)
 - [iFixit Opening Tool](#) (1)
-

Step 1 — Top Panel



⚠ Unplug the DVD player before beginning.

- Remove the three 7.7 mm screws from the back panel using a Phillips #0 screwdriver.

Step 2



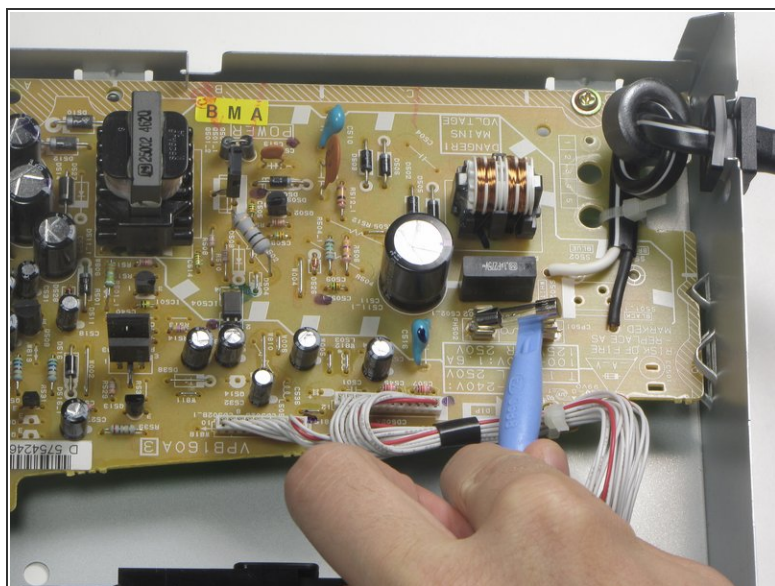
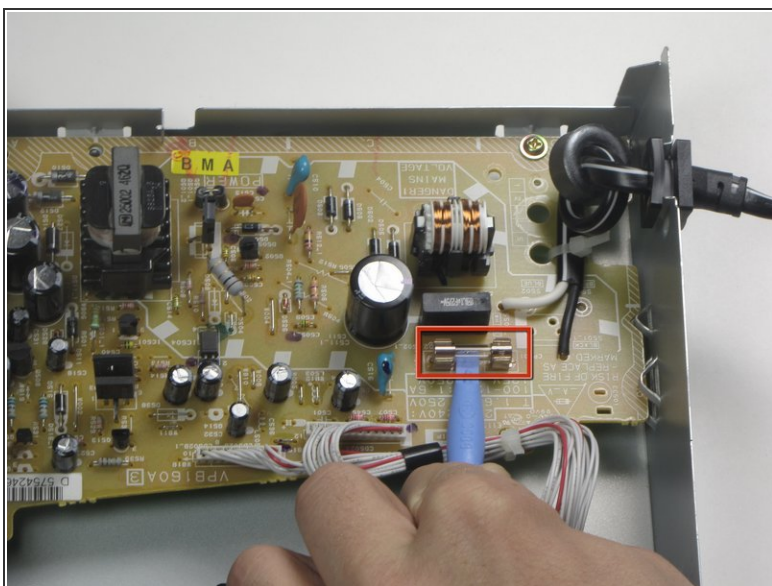
- Turn the DVD player on its side.
- Remove the 7.7 mm screw.
- Flip the DVD player onto its other side.
- Remove the 7.7 mm screw.

Step 3



- Flip the DVD player over onto its front face.
- Remove the back panel by lifting up and pulling it towards yourself.

Step 4 — Motherboard Fuse



- Using the plastic opening tool, gently pop the fuse out of its restraining brackets.

To reassemble your device, follow these instructions in reverse order.