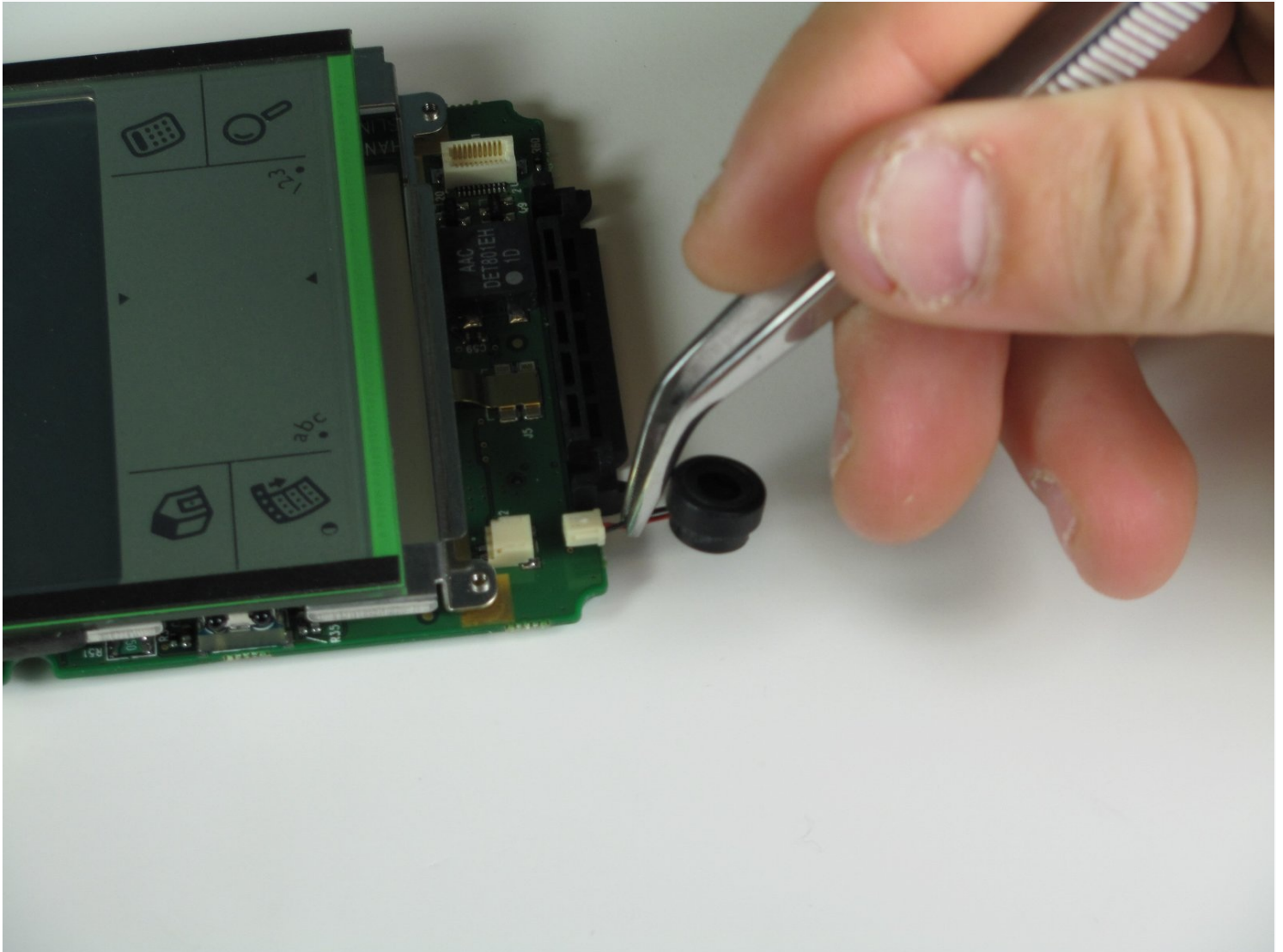




Handspring Visor Edge Speaker Replacement

If your Handspring Visor Edge is producing...

Written By: Nick Lazarakis



INTRODUCTION

If your Handspring Visor Edge is producing distorted audio or no sound at all, use this guide to replace the speaker.

To confirm that the faulty part is coming from the Handspring Visor Edge's speaker, inspect the speaker port for debris that may be interfering with sound quality. A small buildup of dust can be removed using [an ESD-safe brush or small dust blower](#).

Make sure your device is powered off before you begin.

TOOLS:

[Phillips #00 Screwdriver](#) (1)

[Tweezers](#) (1)

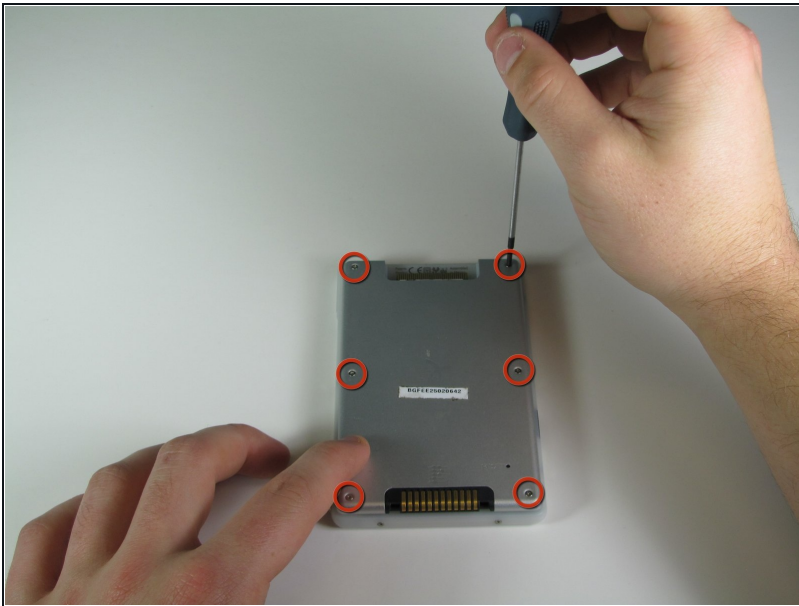
Step 1 — Flip Cover



- Open the Visor Edge and place it on a table facing down.
- Gently push the tab that connects the flip cover (top half) to the PDA (bottom half) upward, lift the pieces apart to detach them.

 Do not pull on the flip cover in an attempt to remove it from the PDA.

Step 2 — Back Panel



- Remove the six 4.1 mm Phillips screws from the back plate using the #00 Phillips Screwdriver.

Step 3



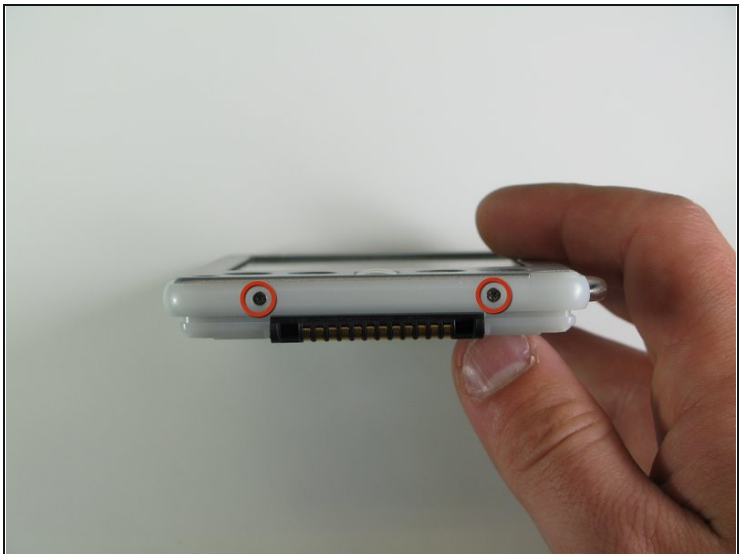
- Remove the gray back plate from the PDA.

Step 4



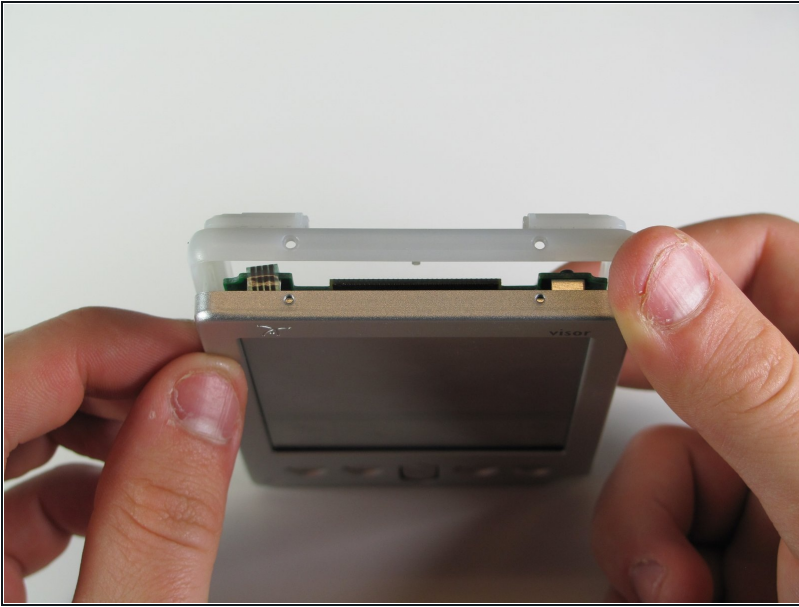
- Remove the four 2.6 mm Philips screws that are on the sides of the frame.
- Remove the 3.9 mm Philips screw holding the stylus holster to the frame.

Step 5



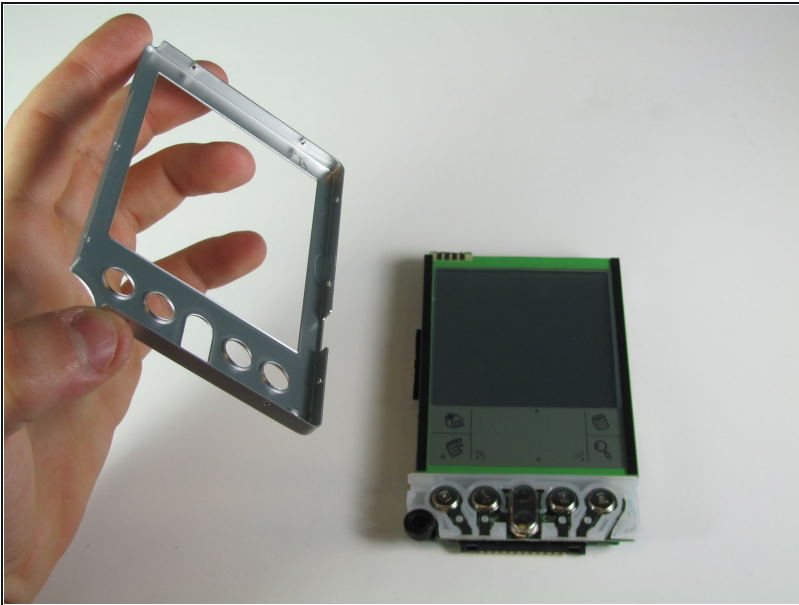
- Remove the four 2.6 mm Philips screws on the top and bottom of the frame.

Step 6



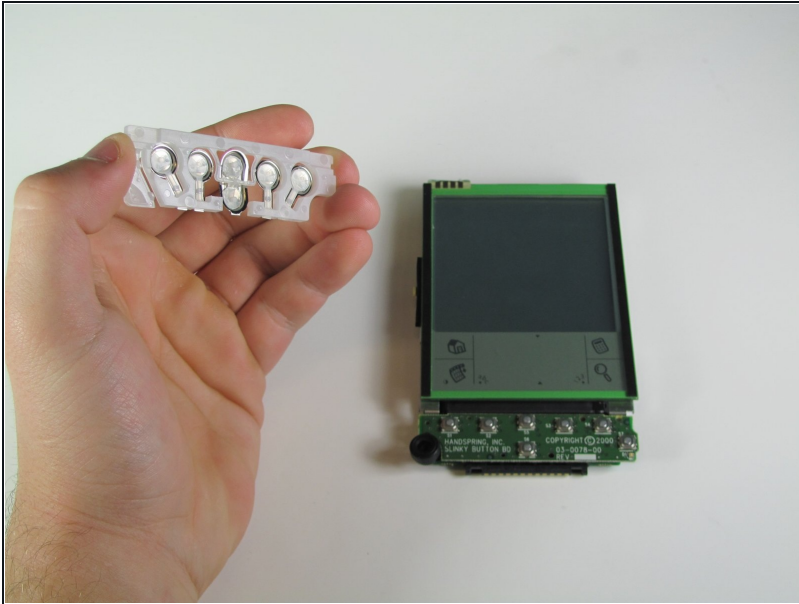
- Gently remove the white frame from the back of the PDA.

Step 7 — Speaker



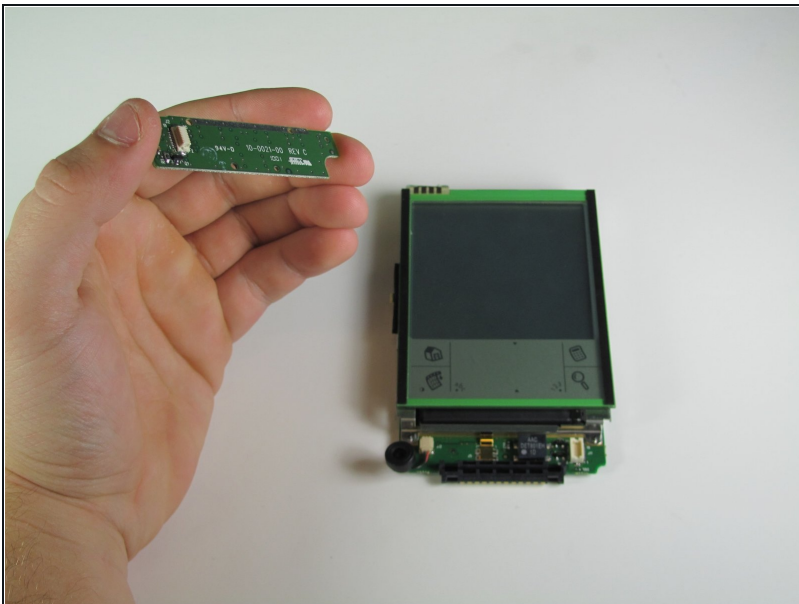
- Gently pull off front cover.

Step 8



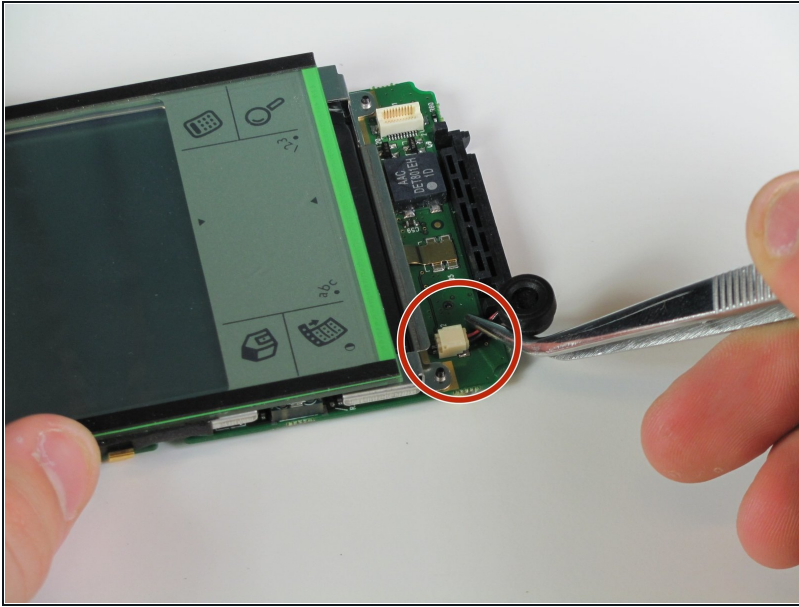
- Gently remove buttons by hand.

Step 9



- Pull off button board.
① (The button board is located underneath the buttons).

Step 10



- Carefully remove the speaker by pulling on the body of the plug with a pair of [tweezers](#), rocking it from side to side to ease it if necessary.

⚠ Pull in the same direction as the individual wires are running and make sure to evenly on the full width of the cable so that no individual wires are overly strained.

To reassemble your device, follow these instructions in reverse order.