



# MacBook Pro 15" Core 2 Duo Model A1211

## Display Assembly Replacement

Written By: iRobot



# INTRODUCTION

Change out the entire display assembly, including the inverter, Airport antennas, hinges and casing.



## TOOLS:

- [Phillips #00 Screwdriver](#) (1)
- [Spudger](#) (1)
- [T6 Torx Screwdriver](#) (1)



## PARTS:

- [MacBook Pro 15" \(Model A1211\) Display Assembly](#) (1)

## Step 1 — Battery



- Use your fingers to push both battery release tabs away from the battery, and lift the battery out of the computer.

## Step 2 — RAM Shield



- Remove the three identical Phillips screws from the memory door.

## Step 3



- Lift the memory door up enough to get a grip on it, and slide it toward you, pulling it away from the casing.

## Step 4 — Upper Case



- Remove the two 2.8 mm Phillips screws in the battery compartment near the latch.

## Step 5



- Remove the following 6 screws:
  - Two 10 mm T6 Torx screws on either side of the RAM slot.
  - Four 14.5 mm Phillips screws along the hinge.

## Step 6



- Remove the four 3.2 mm Phillips screws on the port side of the computer.

## Step 7



- Rotate the computer 90 degrees and remove the two 3.2 mm Phillips screws from the rear of the computer.

## Step 8



- Rotate the computer 90 degrees again and remove the four 3.2 mm Phillips screws from the side of the computer.



## Step 9



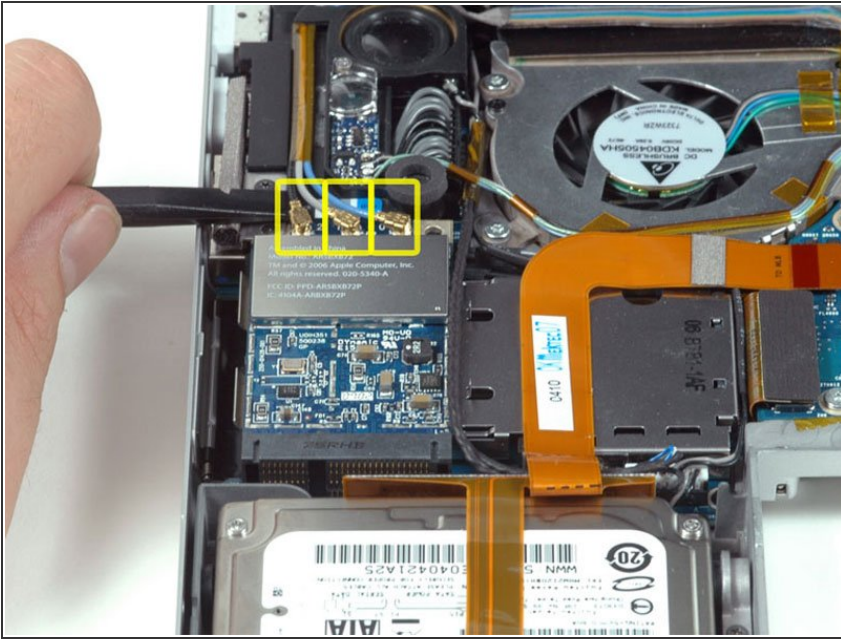
- ⓘ Do not yank the upper case off quickly. The case is attached to the logic board via a ribbon cable.
- Lift up at the rear of the case and work your fingers along the sides, freeing the case as you go. Once you have freed the sides, you may need to rock the case up and down to free the front of the upper case (there are some hidden plastic clips that need to be clicked off).

## Step 10



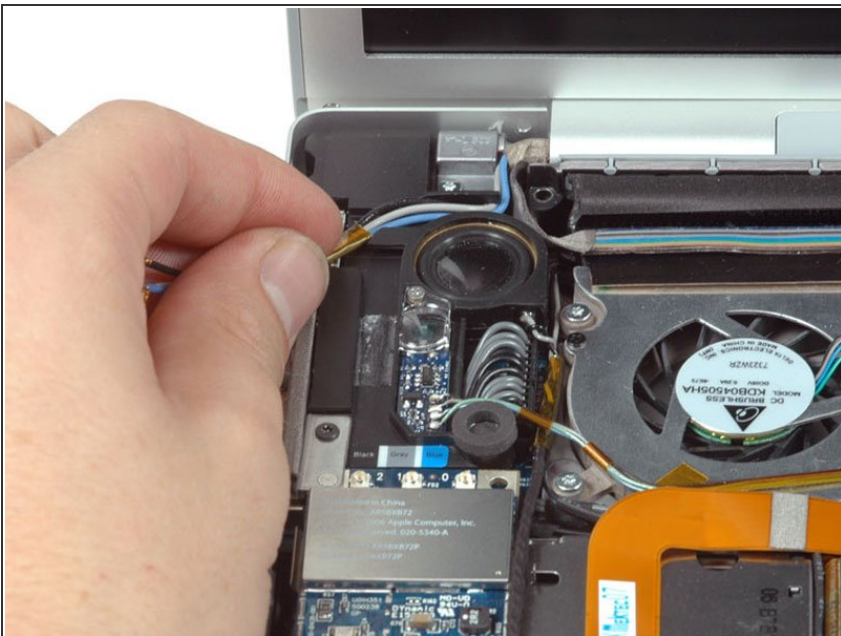
- Disconnect the trackpad and keyboard ribbon cable from the logic board, removing tape as necessary.
- Remove the upper case.

## Step 11 — Display Assembly



- Disconnect the three antenna cables attached to the Airport Extreme card.
- ★ Apple was kind enough to include a label showing where each color antenna cable plugs in - just make sure to look at this when reconnecting the antenna cables.

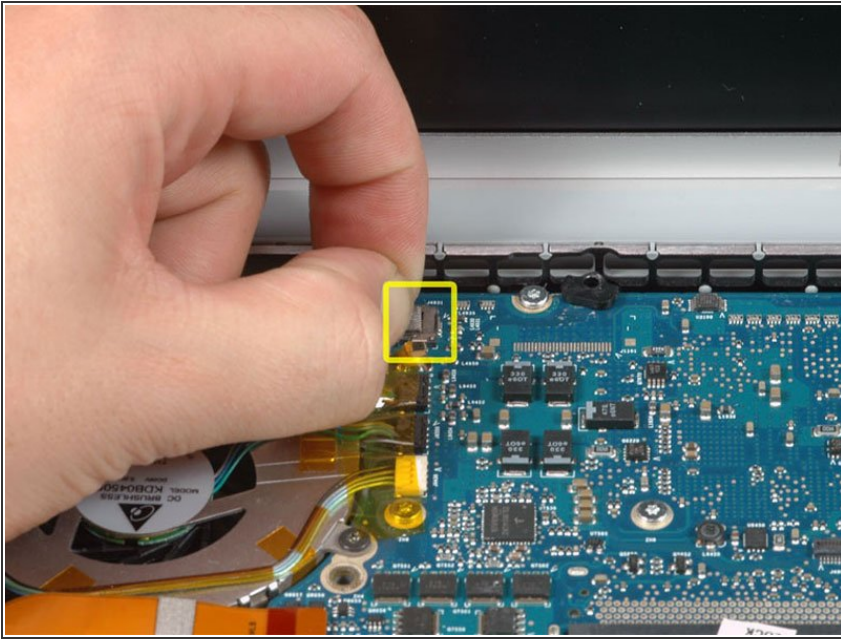
## Step 12



- Deroute the Airport antenna cables from their channel in the left speaker.

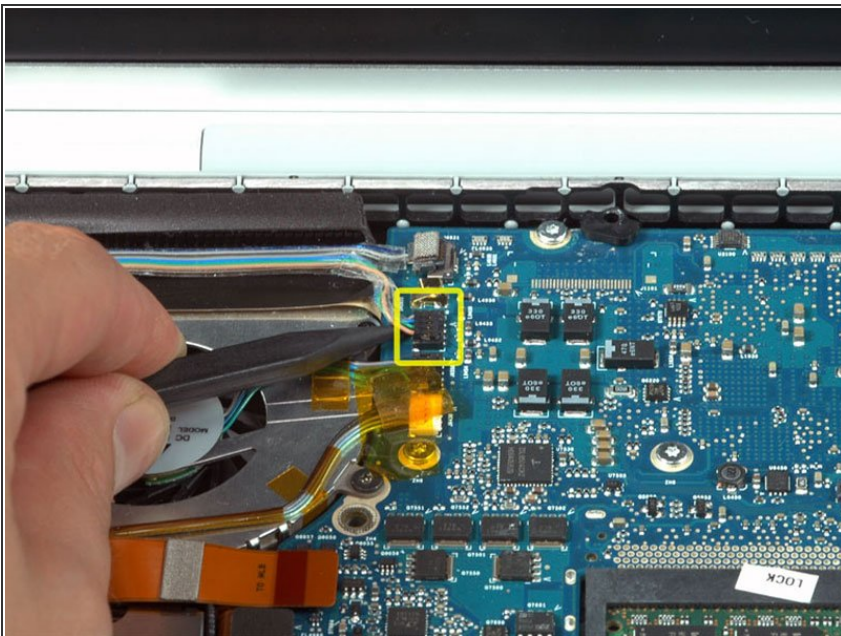


## Step 13



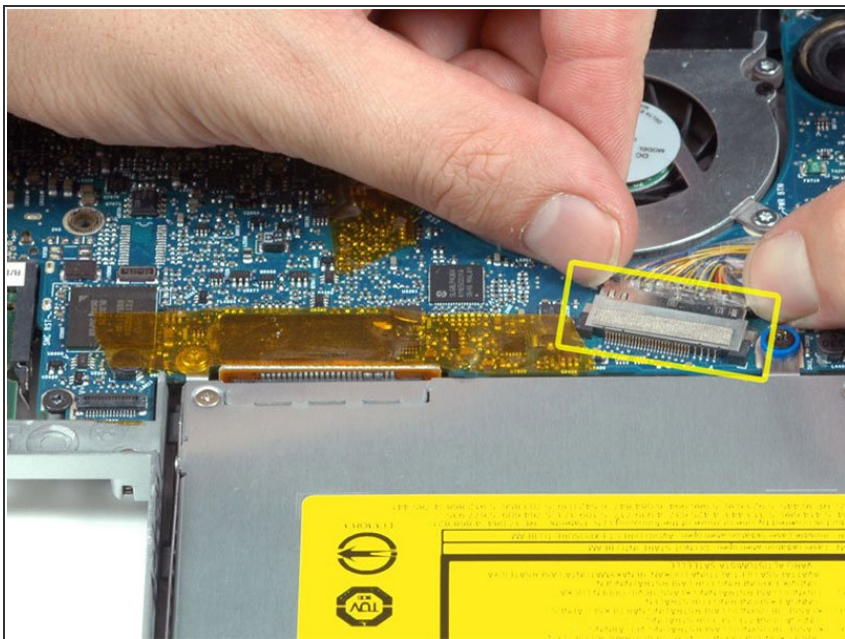
- Disconnect the iSight cable from the logic board by sliding the cable to the left and out of its connector.

## Step 14



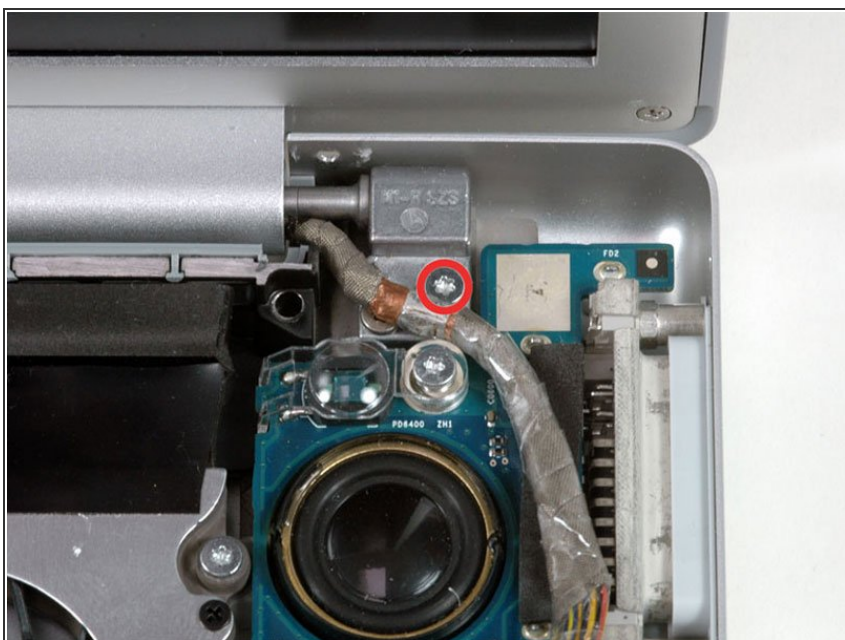
- Disconnect the inverter cable from the logic board by placing a spudger beneath the cable and lifting up.

## Step 15



- Disconnect the display data cable from the logic board by pulling sideways.

## Step 16



- Remove the silver T6 Torx securing the ground loop in the display data cable to the casing.



## Step 17



- Support the display with one hand while removing the following 3 screws:
  - Two 9.5 mm silver T6 Torx screws with threads on only part of the shaft on the inside of the display hinges.
  - One 9.5 mm silver T6 Torx screw with threads on the entire shaft on the outside of the left hinge.

## Step 18



- Grasp the display assembly on both sides and lift it up and out of the computer.

To reassemble your device, follow these instructions in reverse order.