



# Canon PowerShot S110 Lens Replacement

This guide will explain how to remove and replace a defective lens on the Canon Powershot S110 camera.

Written By: Pierre



---

## INTRODUCTION

Remove all accessories connected to the camera prior to lens removal out of precaution.

---



### TOOLS:

- [Essential Electronics Toolkit](#) (1)
-

## Step 1 — Battery Removal



- Remove the battery by sliding open the cover on the bottom of the camera.

⚠ This must be done in order to avoid causing any short circuits, and to continue with disassembly.

## Step 2



- Removing the following 6 Phillips screws will allow access to the inside of the camera:
- Remove two screws on the right-side of the camera, near the HDMI port.
- Remove two screws on the opposite side of the camera.
- Remove the last two screws on the underside of the camera, near the tripod mounting hole.

## Step 3



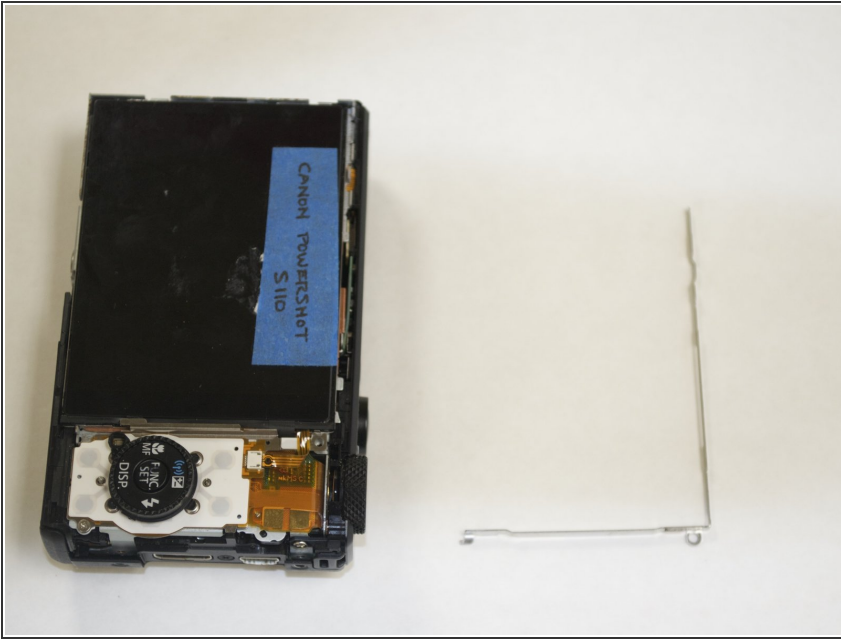
- Release all clips around the outside plastic shell, and it will lift off.

## Step 4



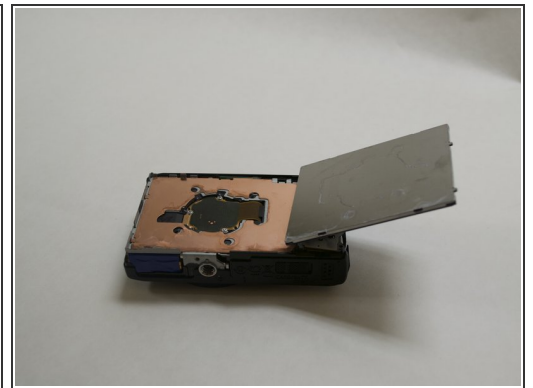
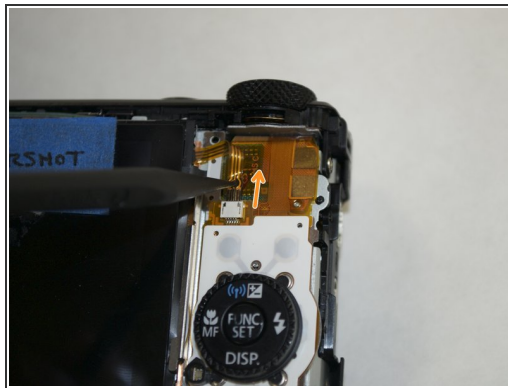
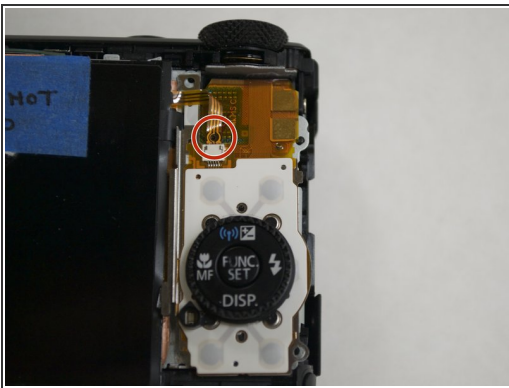
- Remove the Phillips screw near the display holding the bracket in place.
- Remove the second Phillips screw in the bottom corner, making it easier to remove the bracket.

## Step 5



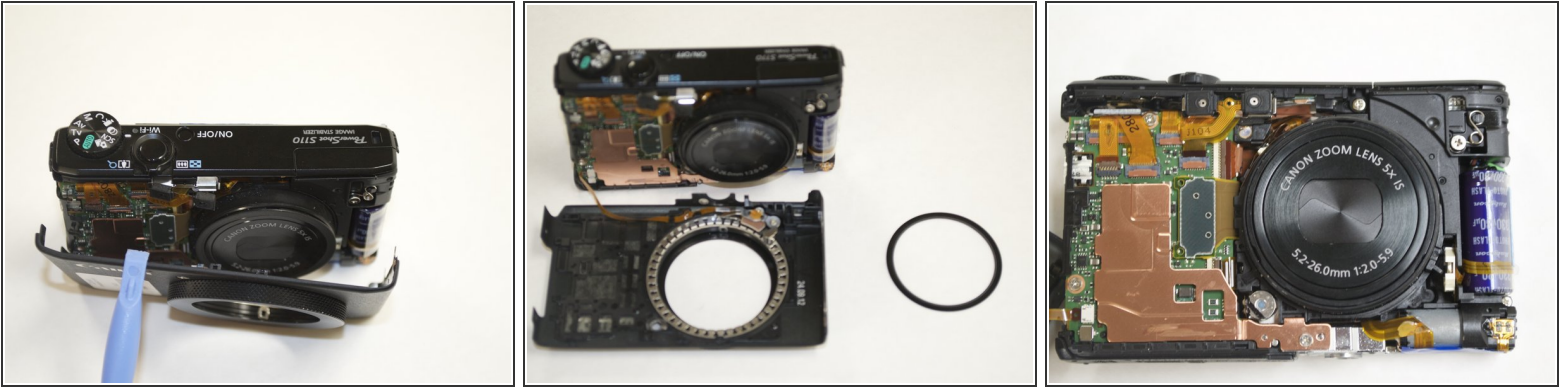
- Lift out the display mounting bracket, and set it aside.

## Step 6



- Using a plastic spudger, slowly pull out the ribbon using the hole shown in the image. The first of three logic connectors connecting the display to the camera is now removed.
- The display should now be partially disconnected from the back side of the camera.

## Step 7



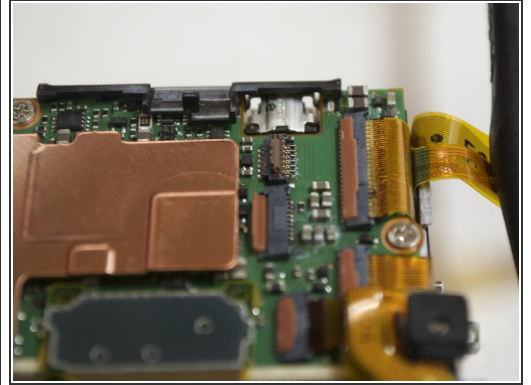
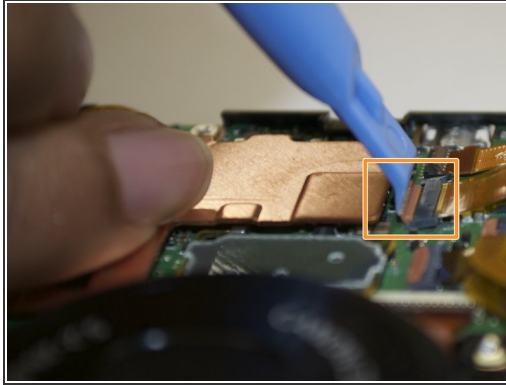
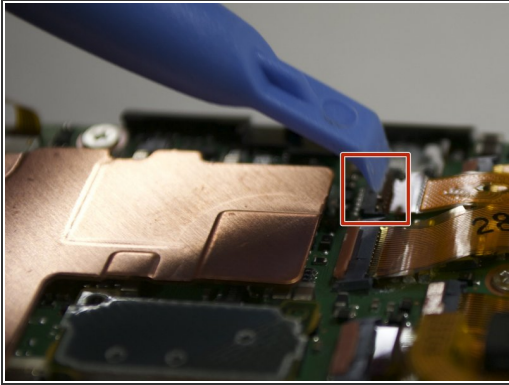
- In order to remove the other two connectors, the front of the case must be removed. Slowly pry around the edges using a plastic prying tool to free the case. A lens-ring piece will fall out from the inside of the camera; set this aside.

## Step 8



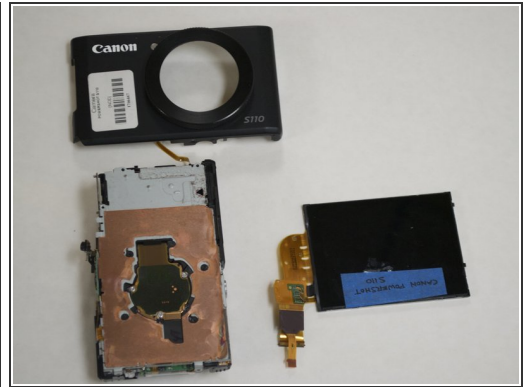
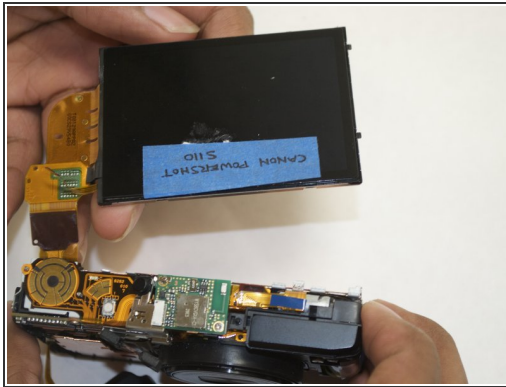
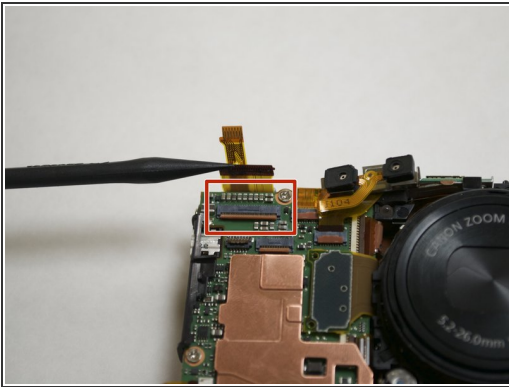
- Remove the two screws that hold the top piece of the plastic case in. One is short, one is long.
- With a spudger remove the two rubber pads from the top of the camera to prevent pulling on the flex cable.

## Step 9



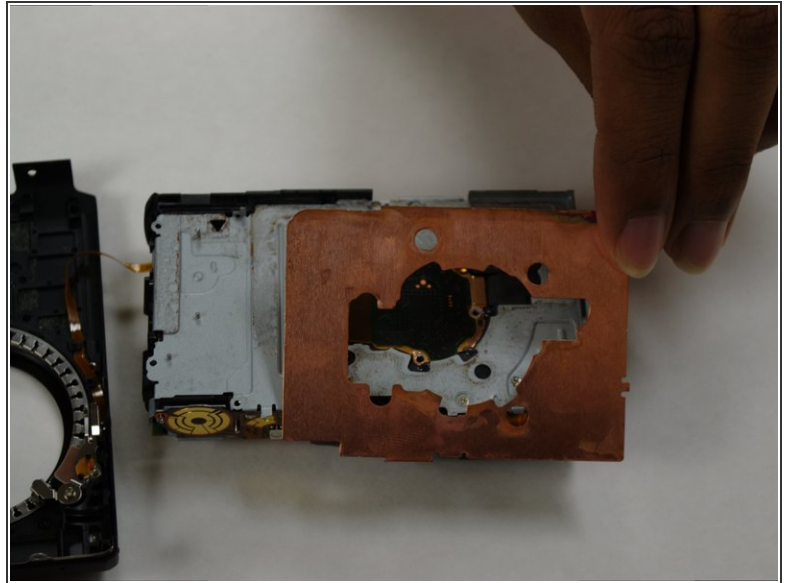
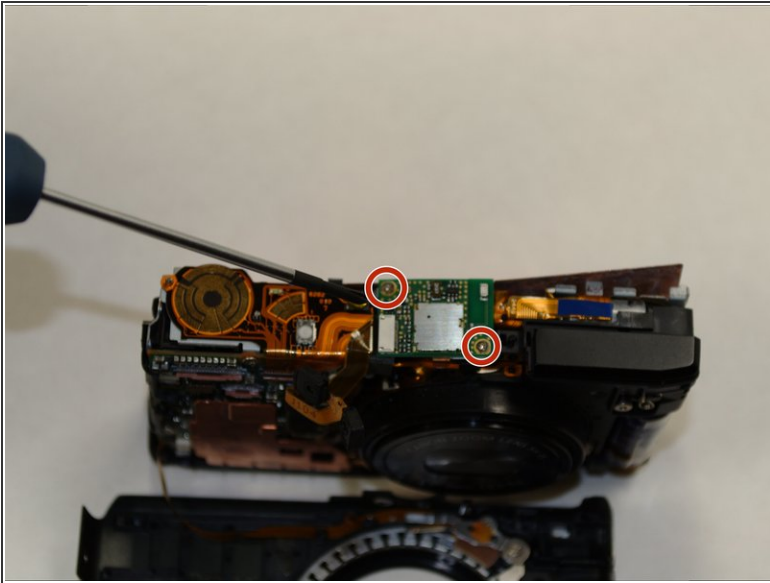
- Flip up the tab holding down this logic ribbon.
- Flip up a second tab holding down this other ribbon; both the cables should be easily removable following this.

## Step 10



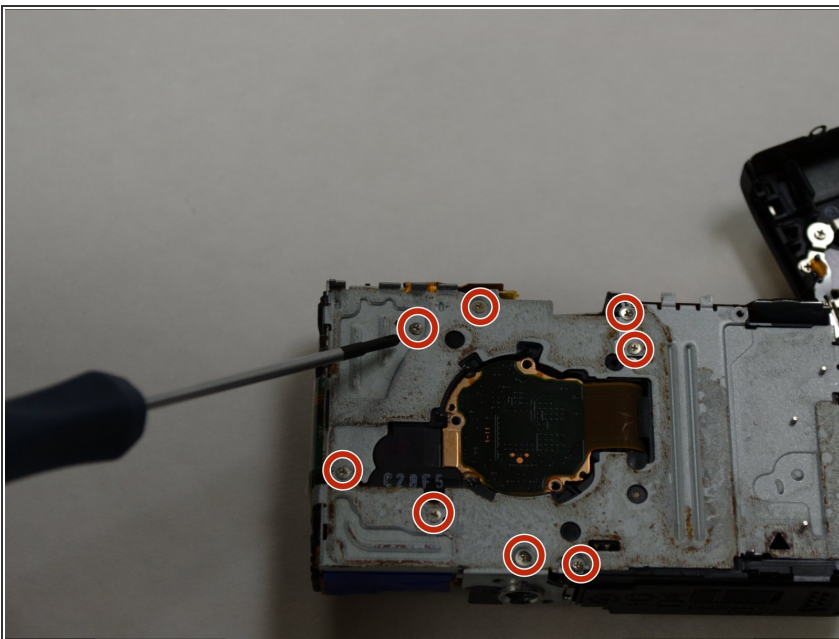
- Flip up the tab and remove the last ribbon.
- The display can now be lifted off the camera and the logic ribbons attached in the front can slide out.

## Step 11



- Using a Phillips screwdriver, remove the screws on the small circuit board at the top of the camera.
- This will allow you to finish removing the copper panel with either your hands or a prying tool.

## Step 12



- Using a Phillips screwdriver, remove the 8 screws attaching the metal panel to the camera.
- ⚠ During reassembly, make sure the screws go back in their specific holes, to avoid damage to the camera.

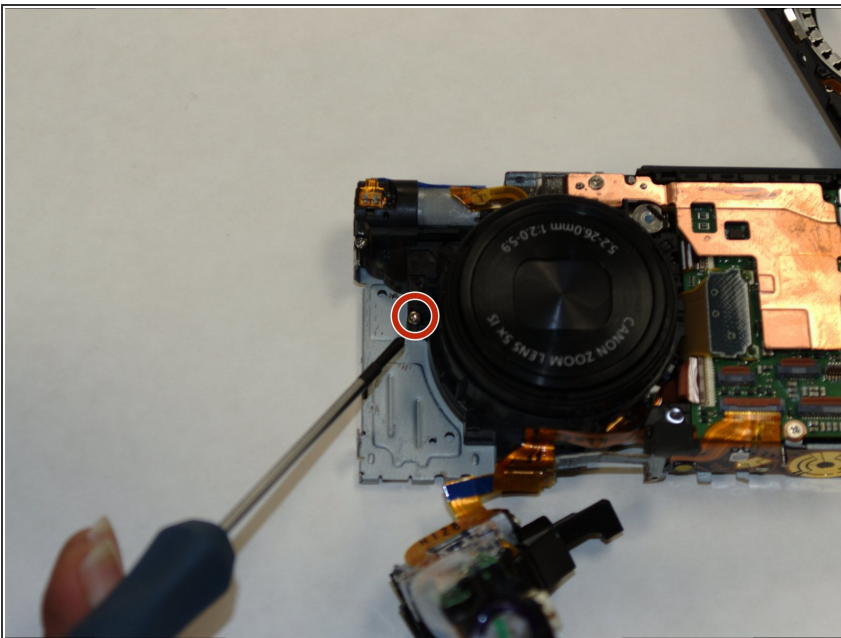
## Step 13 — Remove flash unit



- To remove the flash assembly, disconnect the flex cable connection, then move the flash unit out of the way.

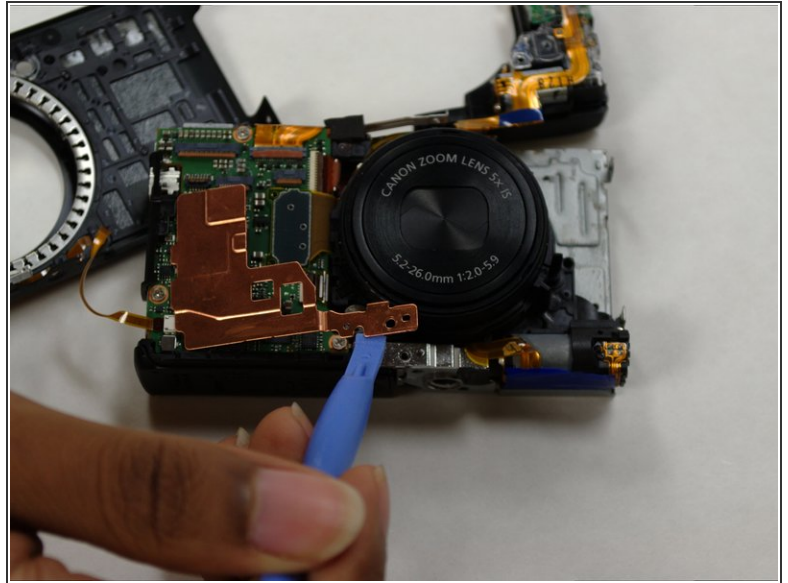
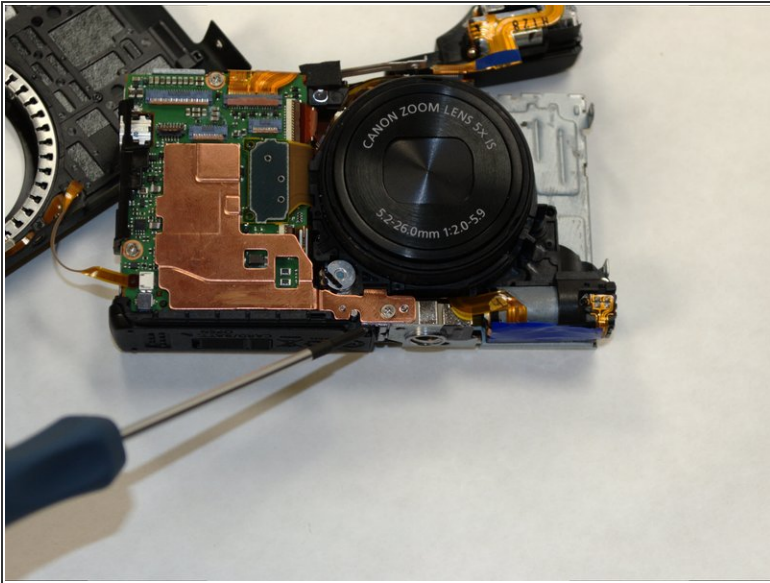
⚠ Exercise caution when handling the flash unit, as there is minimal plastic protection preventing an electric shock.

## Step 14



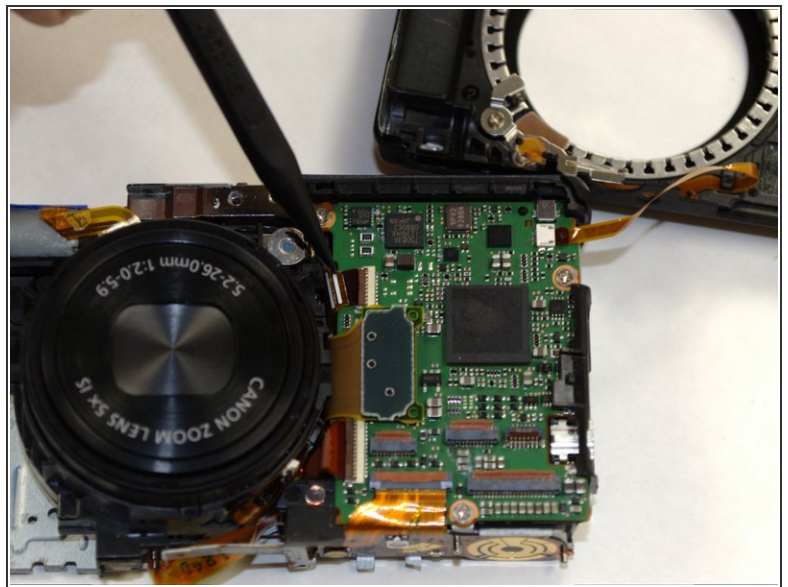
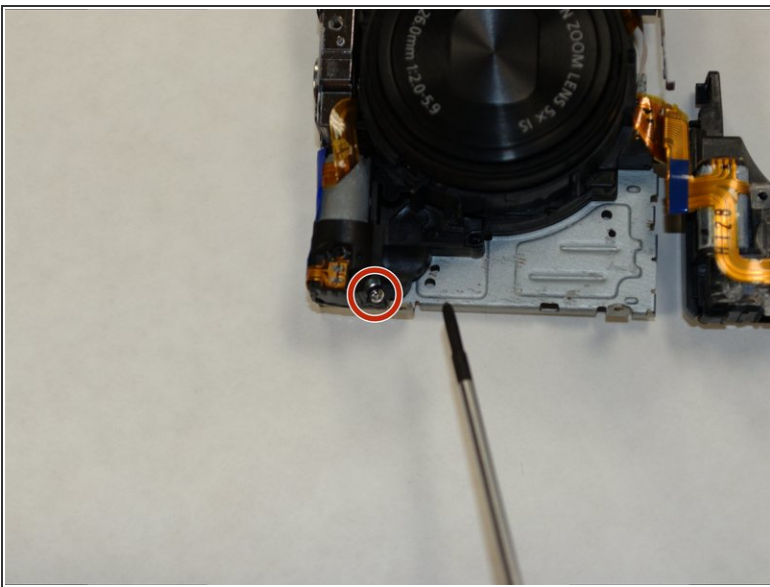
- Remove the Phillips screw on the front facing side of the lens.

## Step 15



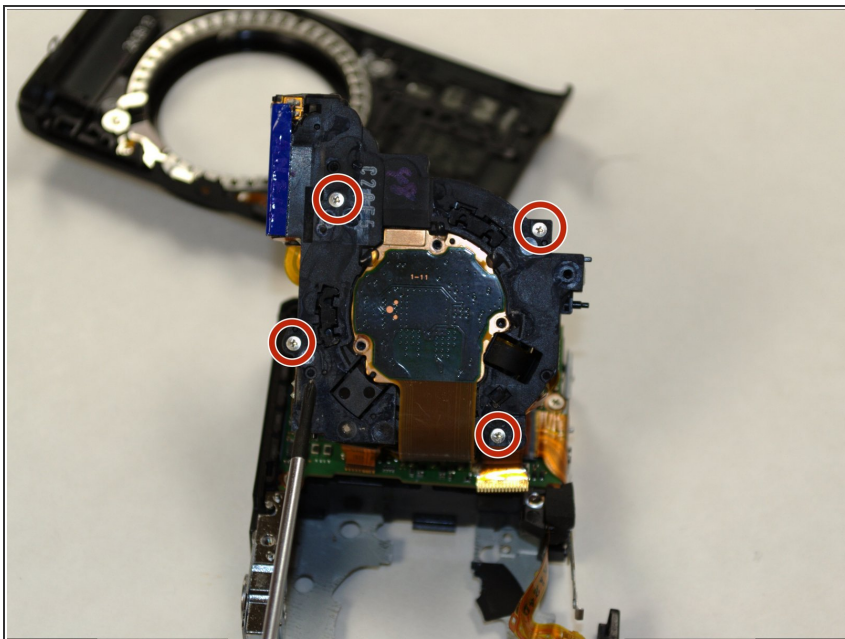
- Remove the Phillips screw holding the copper plate in place.
- Use a prying tool to lift off the copper plate.

## Step 16



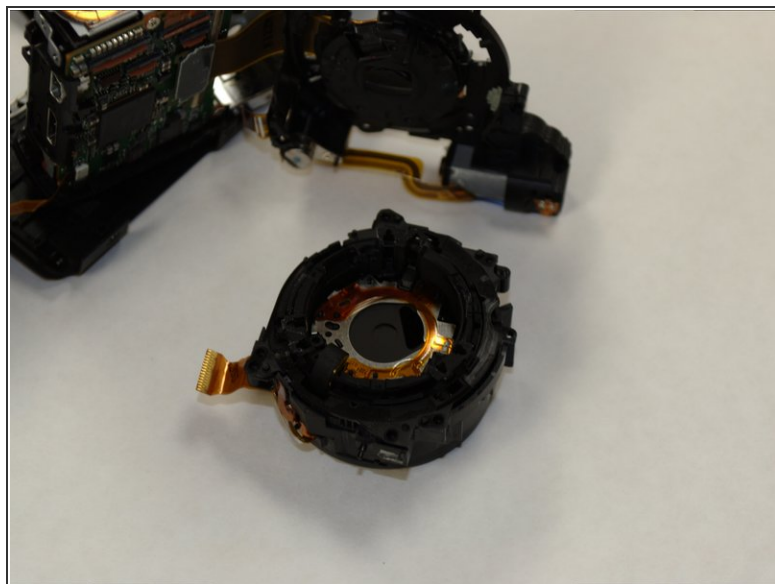
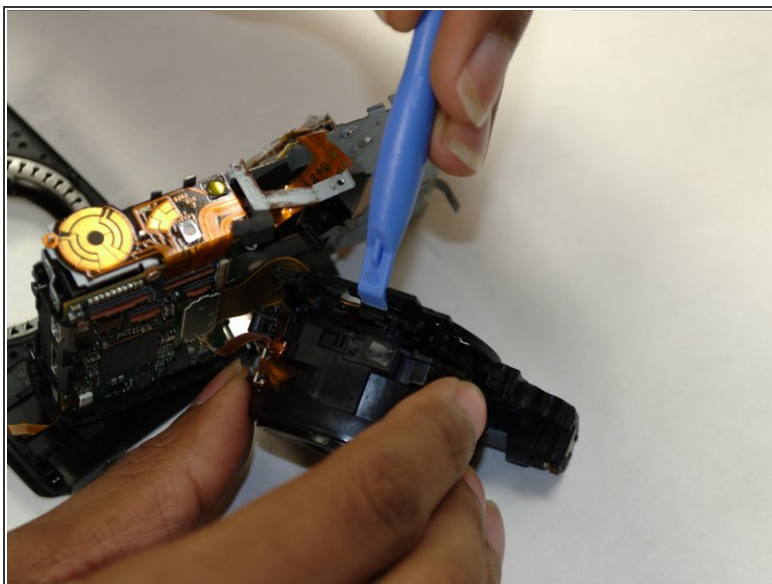
- Remove the indicated screw on the front facing side of the lens using a Philips screwdriver.
- Next, remove the small attached ribbon by lifting up the clip and gently pulling the ribbon out.

## Step 17



- Lift the lens up to reveal the screws underneath.
- Remove the 4 Phillips screws connecting the lens to the lens bracket.

## Step 18



- Using a prying tool, remove the lens bracket.

⚠ Handle your new lens carefully upon reassembly, as it's very fragile.

To reassemble your device, follow these instructions in reverse order.