



PowerBook G4 Aluminum 17" 1.67 GHz (High-Res) Display Data Cable Replacement

Replace a worn or broken display data cable in your PowerBook G4 Aluminum 17" 1.67 GHz (High-Res).

Written By: Andrew Bookholt



INTRODUCTION

Use this guide to replace a worn-out or broken display data cable.



TOOLS:

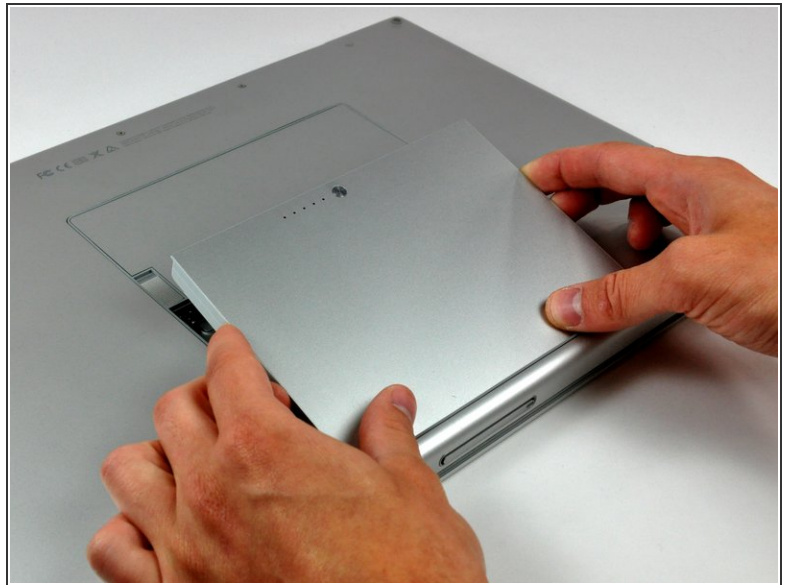
- [4mm Nut Driver](#) (1)
- [Phillips #00 Screwdriver](#) (1)
- [Flathead 3/32" or 2.5 mm Screwdriver](#) (1)
- [Spudger](#) (1)
- [T6 Torx Screwdriver](#) (1)
- [T8 Torx Screwdriver](#) (1)



PARTS:

- [G4 Aluminum 17" Display Data Cable](#) (1)

Step 1 — Battery



- Use your thumbs to push the two battery retaining tabs away from the battery.
- The battery should pop up enough to rotate it toward yourself and lift it out of the lower case.

Step 2 — Memory Door



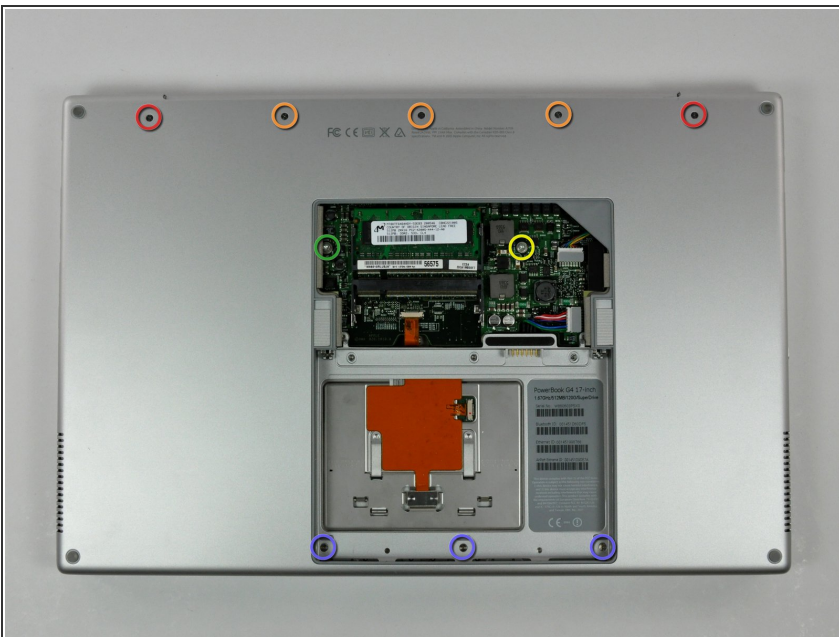
- Remove the three 2.3 mm Phillips screws securing the memory cover to the lower case.

Step 3



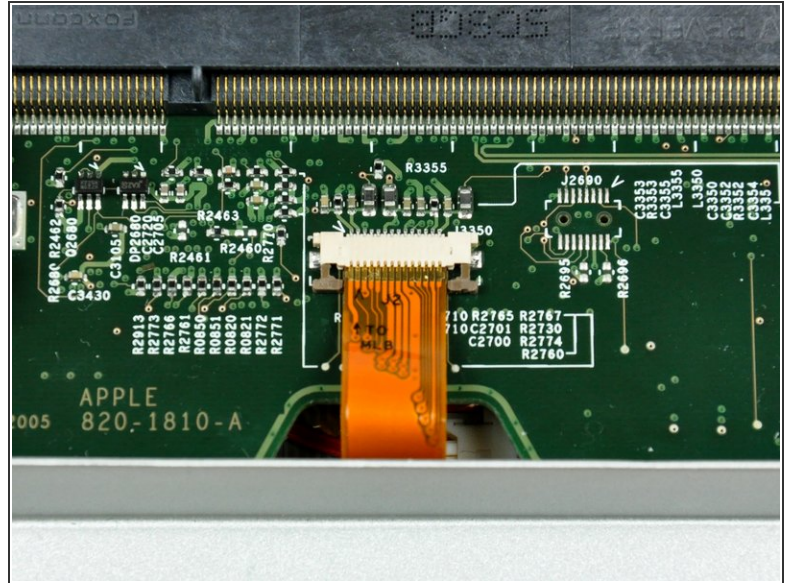
- Lift the memory cover slightly and pull it toward yourself to remove it from the lower case.

Step 4 — Upper Case



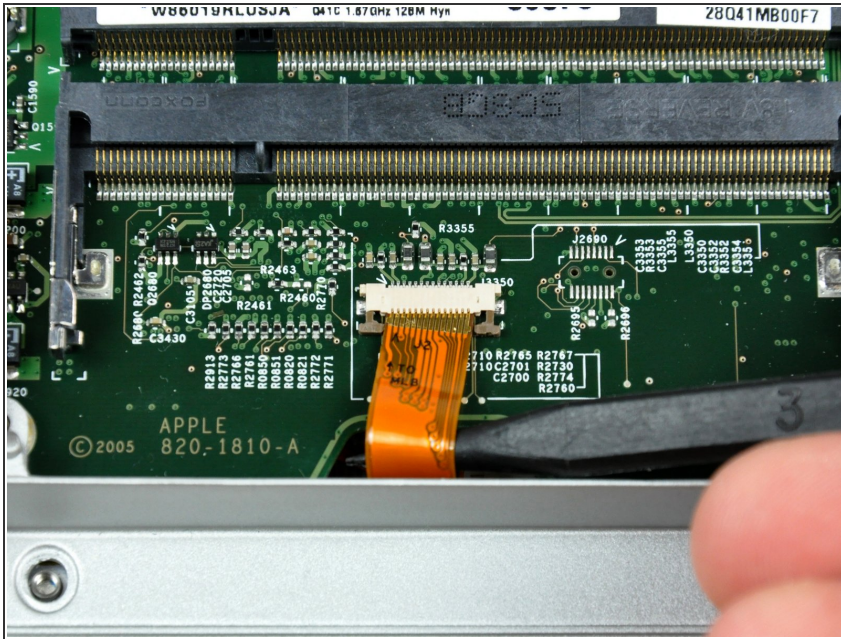
- Remove the following ten screws:
 - Two 14.7 mm shouldered Phillips.
 - Three 12.3 mm Phillips.
 - One 3.8 mm T8 Torx.
 - One 6.8 mm T8 Torx.
 - Three 1.3 mm Phillips.

Step 5



- The ZIF cable is located underneath the bottom RAM slot. If your PowerBook has both RAM slots occupied, make sure to [remove](#) the RAM chip.
- Use your fingernails to separate the ZIF cable lock away from its socket. (Move the two brown bits down 1mm)
- ⚠ The ZIF cable lock will move about a millimeter away from the socket before it stops (see picture 2). **Do not** try to remove the ZIF cable lock.


Step 6



- Use the tip of a spudger to slide the trackpad ribbon cable out of its socket.



Step 7



- Remove the four 3.4 mm Phillips screws from the PC card side of the PowerBook.
-  When replacing these screws, you must reinstall each screw in the correct order. Begin by installing the screw closest to the display hinge, and go out from there.

Step 8



- Remove the four 3.4 mm Phillips screws from the DVI connector side of the PowerBook.
-  When replacing these screws, you must reinstall each screw in the correct order. Begin by installing the screw closest to the display hinge, and go out from there.
-  During reassembly, make sure to reinstall the two screws on the right into their appropriate locations, and not the DVI port anchor holes.

Step 9



- Depress the display latch release button and open your display.

Step 10



- Starting near the display, lift the upper case straight up off the lower case, minding any cables that may get caught.

Step 11 — Modem



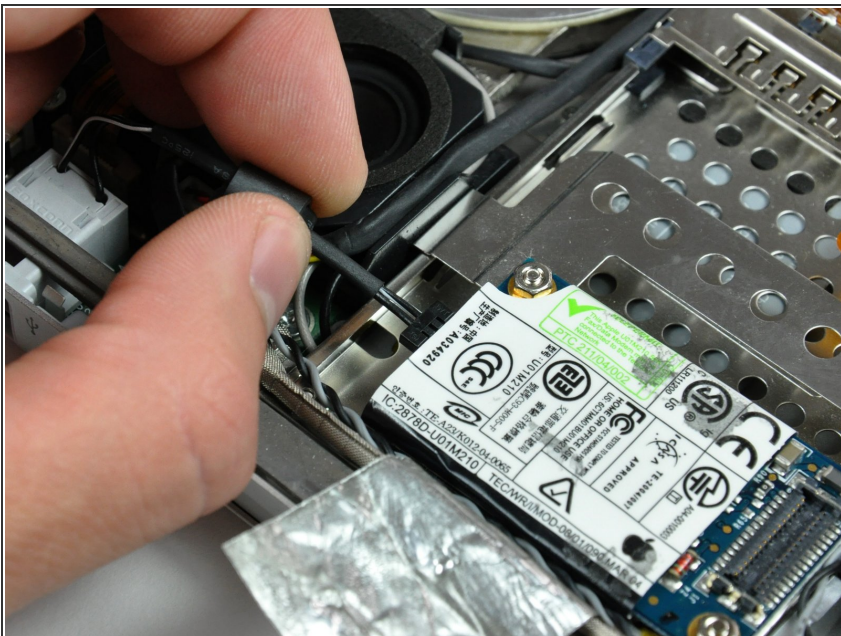
- If necessary, peel back the strip of aluminum tape covering the modem cable.

Step 12



- Use the flat end of a spudger to pry the modem cable connector up off the modem.

Step 13



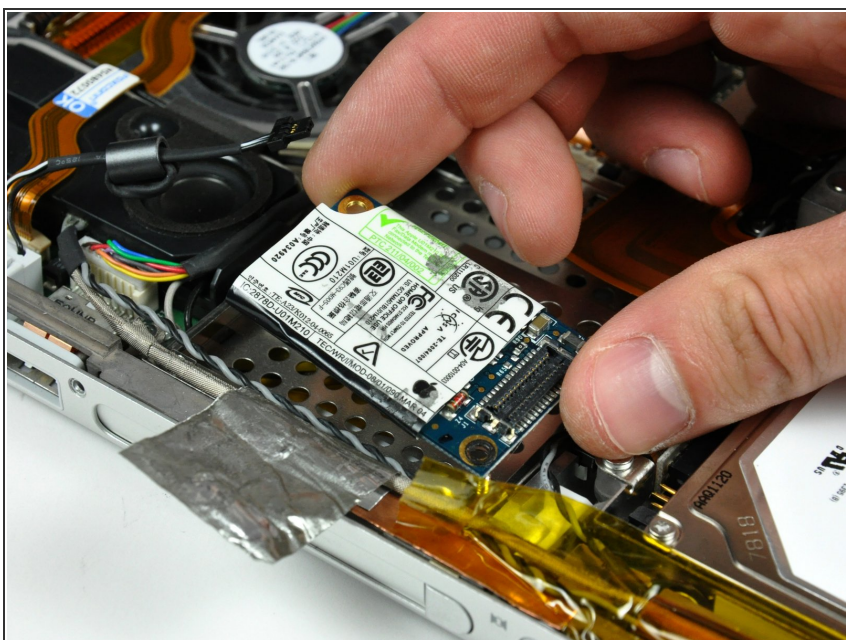
- Disconnect the RJ-11 cable from the modem.

Step 14



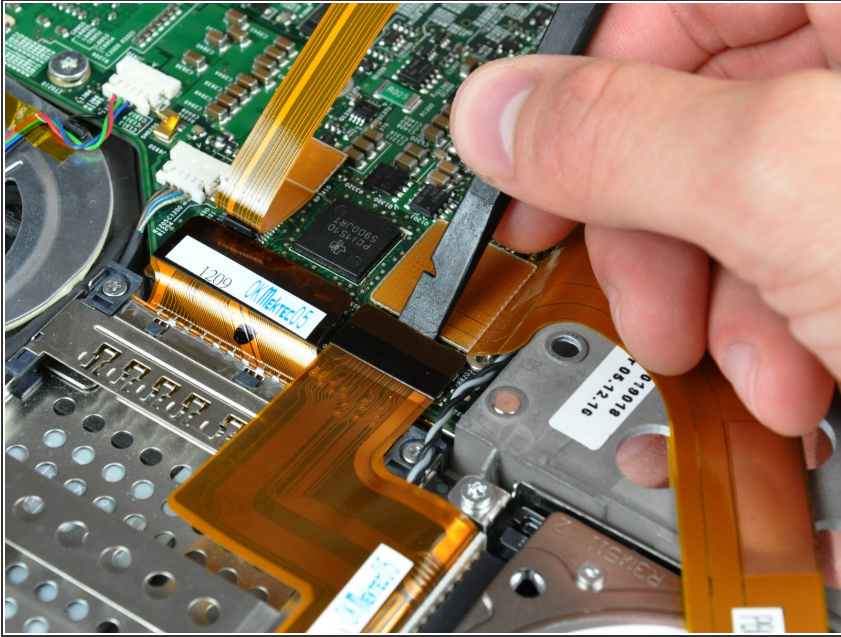
- Use a 4 mm nut driver to remove the two nuts securing the modem to the PC card cage.

Step 15



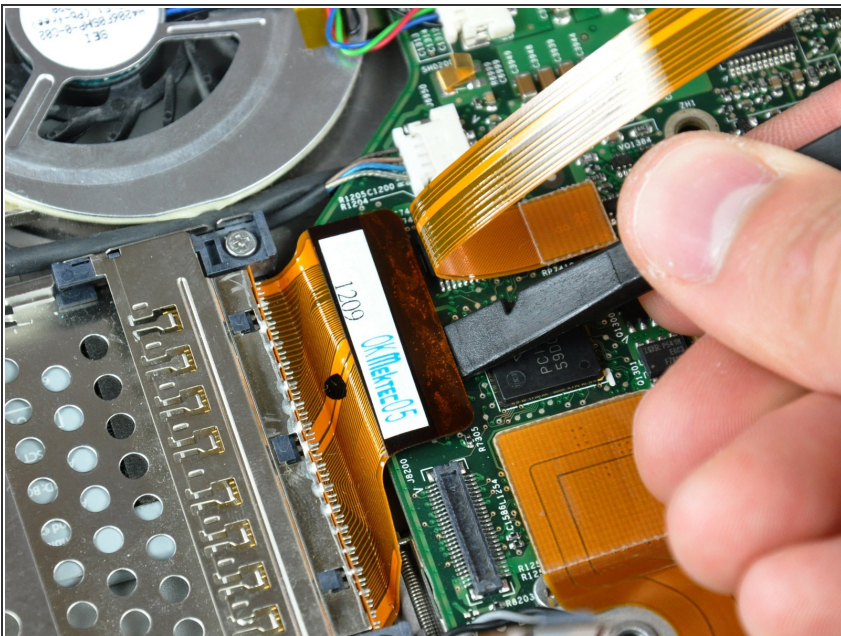
- Lift the modem straight up off the studs on the PC card cage.

Step 16 — PC Card Cage



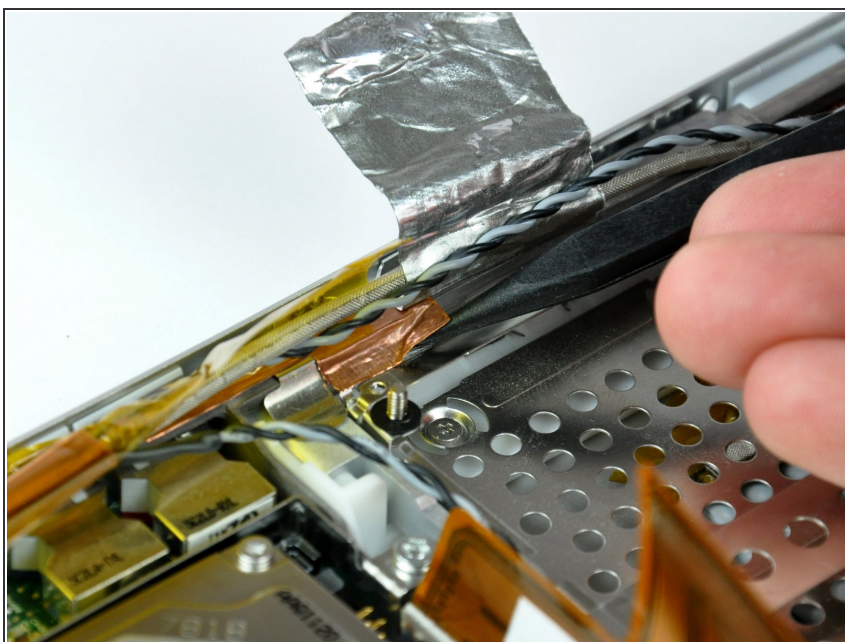
- Use the flat end of a spudger to pry the hard drive cable connector up off the logic board.
- Bend the hard drive cable away from the PC card cage, giving yourself room to remove it.

Step 17



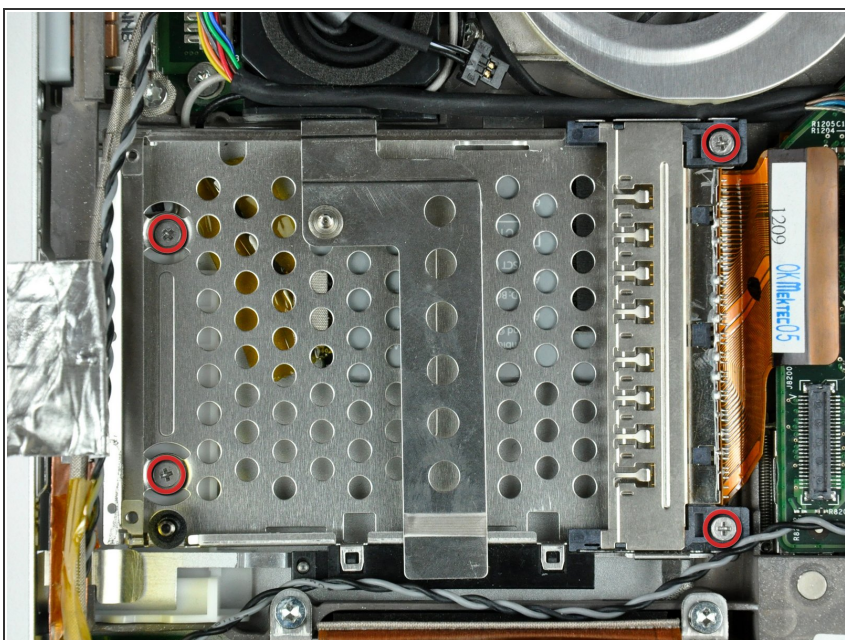
- Use the flat end of a spudger to pry the PC card cage connector up off the logic board.

Step 18



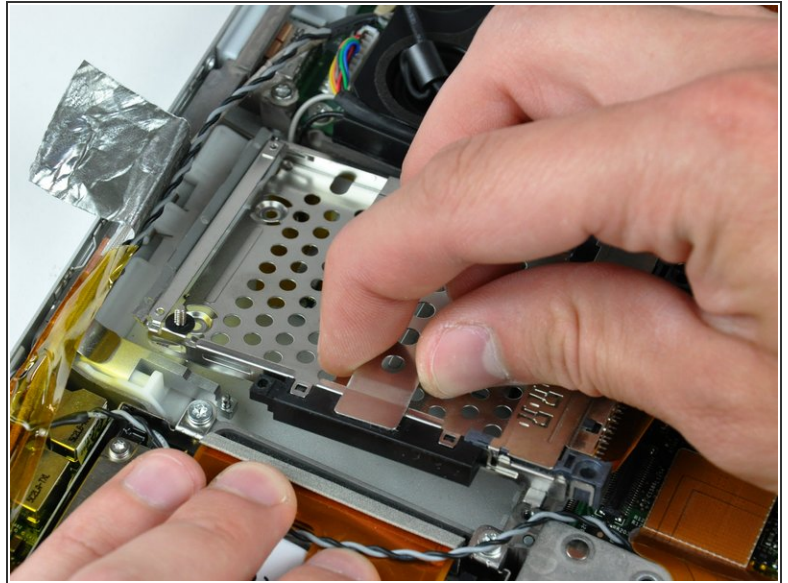
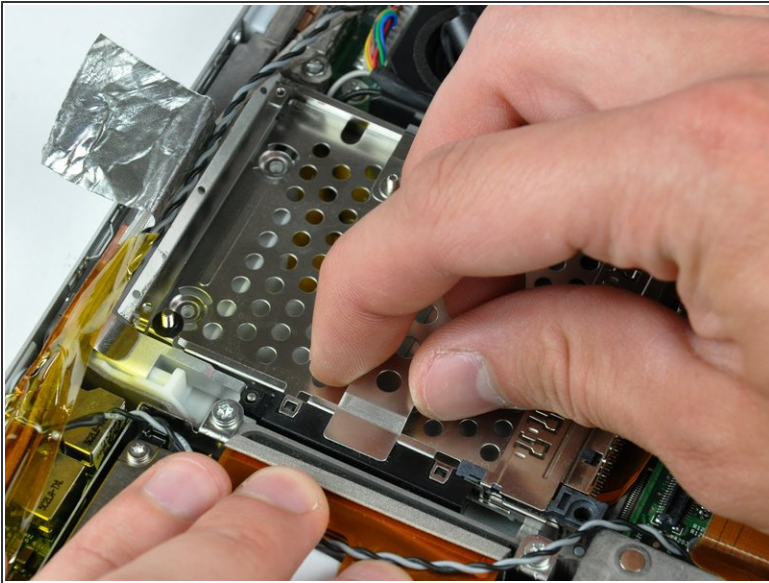
- Use the tip of a spudger to peel back the small strip of copper tape off the edge of the PC card cage near the side of the lower case.

Step 19



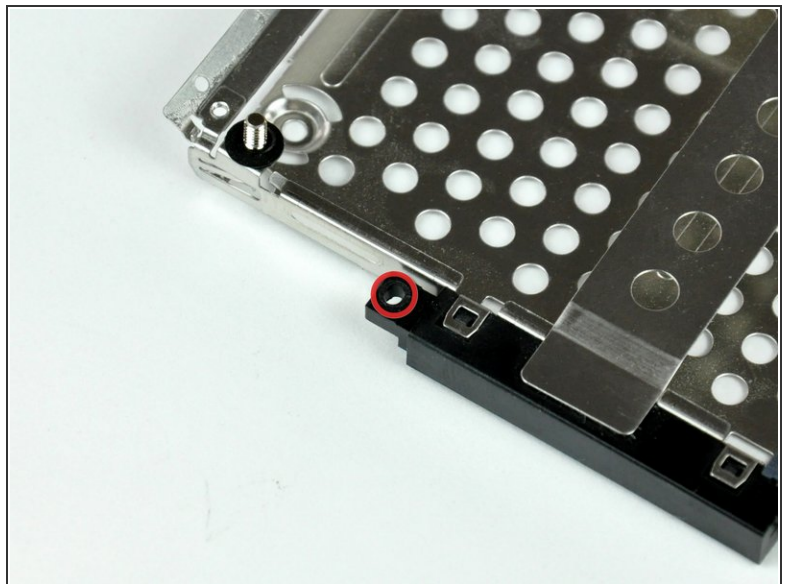
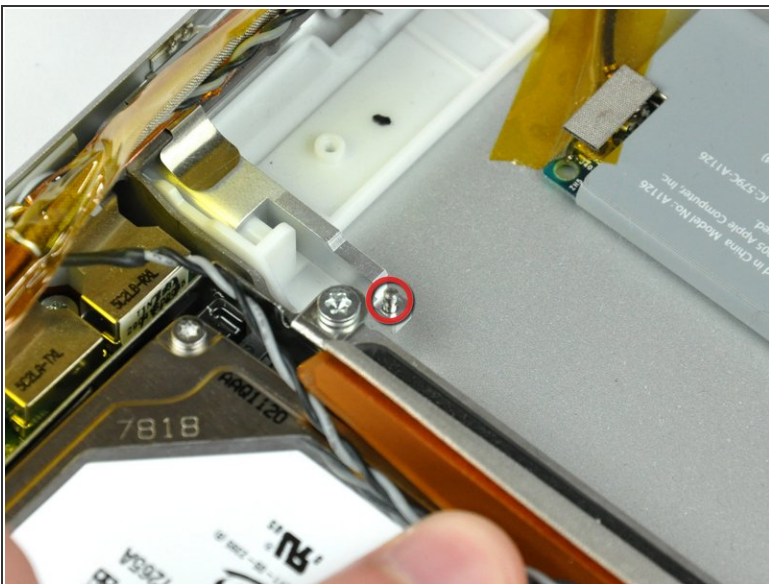
- Remove the four Phillips screws (2-4 mm & 2 -6.8 mm) securing the PC card cage to the lower case.
- ⓘ The two longer 6.8 mm shouldered screws belong in the end of the PC card cage closest to the logic board.

Step 20



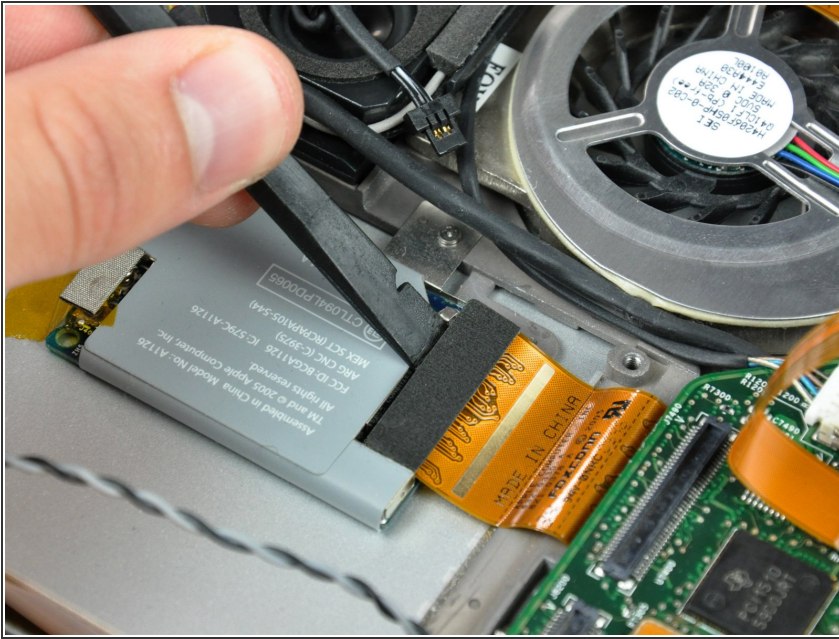
- Lift the PC card cage by its center piece and maneuver it out of the lower case.

Step 21



- ☞ When reinstalling your PC card cage, be sure to insert the post sticking up from the PC card release button into the hole in the black plastic release mechanism on the PC card cage.

Step 22 — AirPort/Bluetooth Board



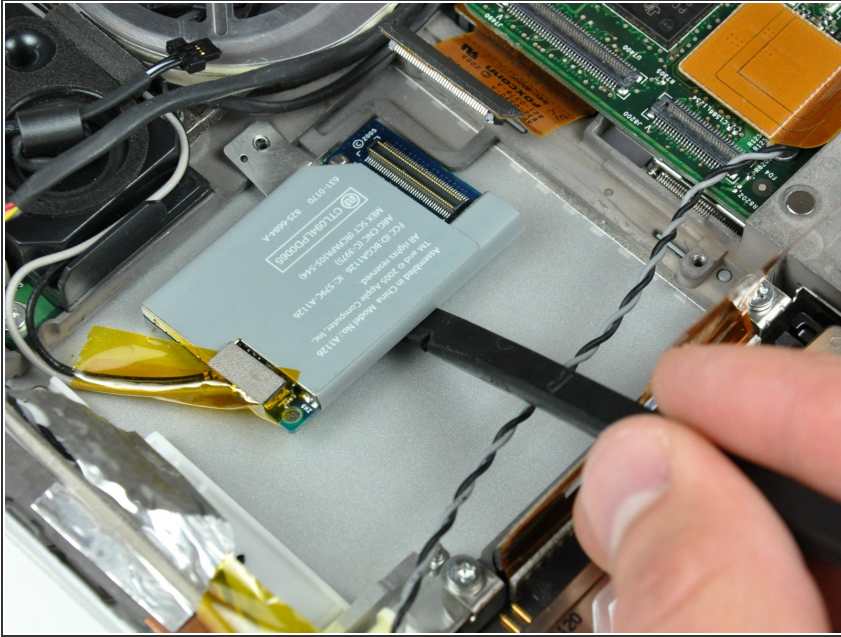
- Use the flat end of a spudger to pry the ribbon cable connector up off the AirPort/Bluetooth board.

Step 23



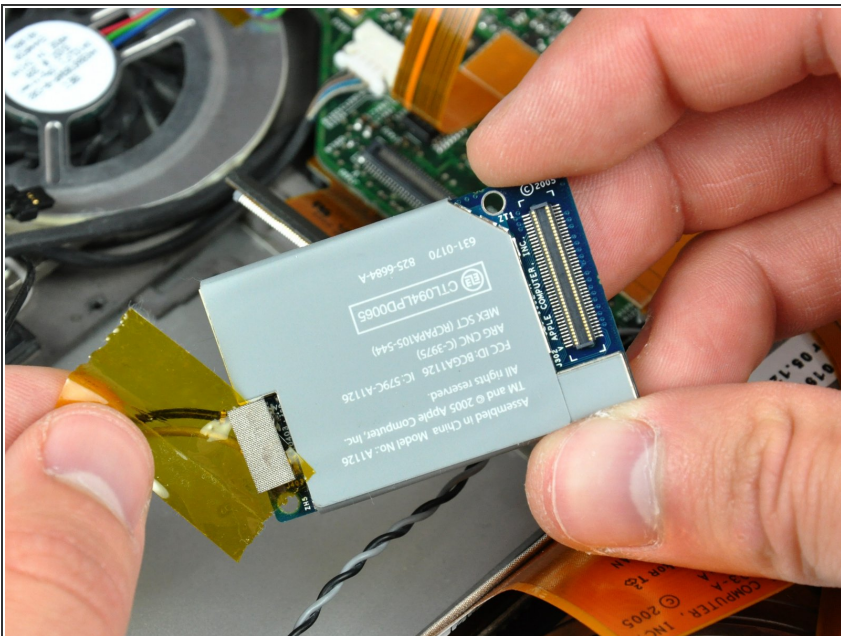
- Remove the single 2.1 mm Phillips screw securing the AirPort/Bluetooth bracket to the lower case.
- ⓘ It is possible to remove the AirPort/Bluetooth board without removing this screw. Alternatively use the sharp end of a spudger to press the metal pressure connector (shown in orange) down through the hole in the AirPort/Bluetooth board, being careful to not break it off when prying the board up in the next step.

Step 24



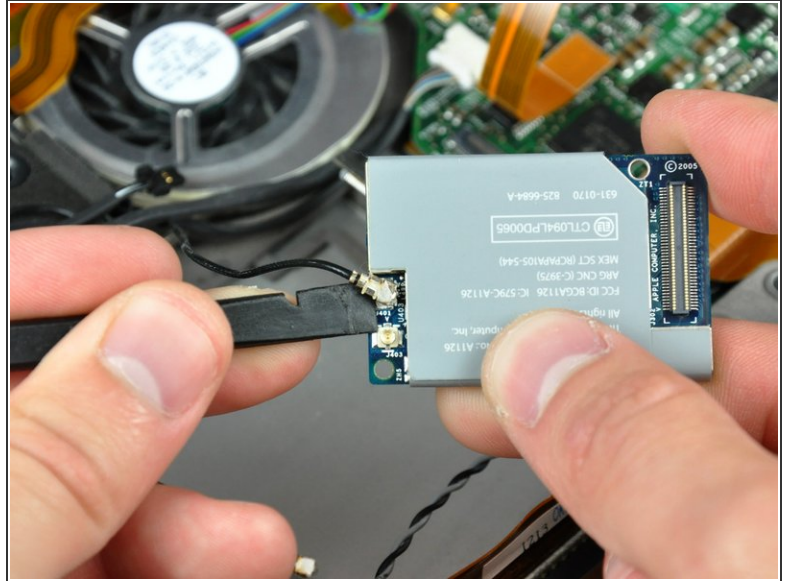
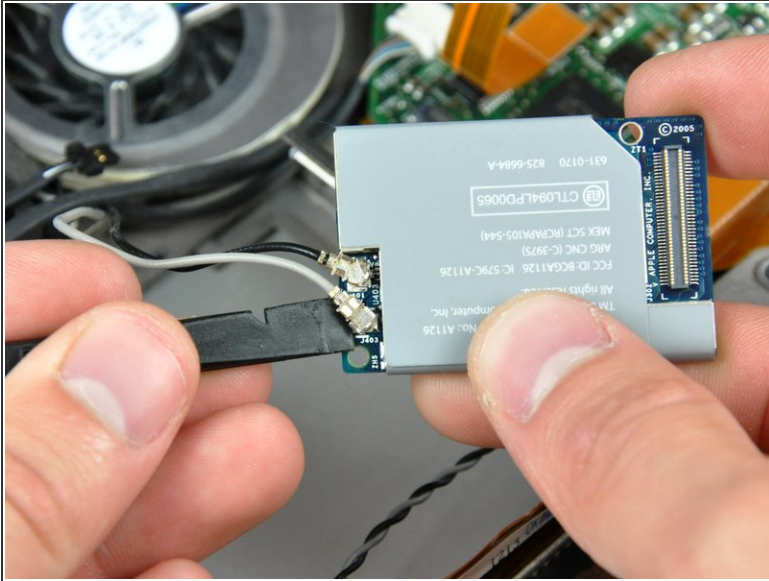
- Use the flat end of a spudger to pry the AirPort/Bluetooth board up off the adhesive securing it to the lower case.

Step 25



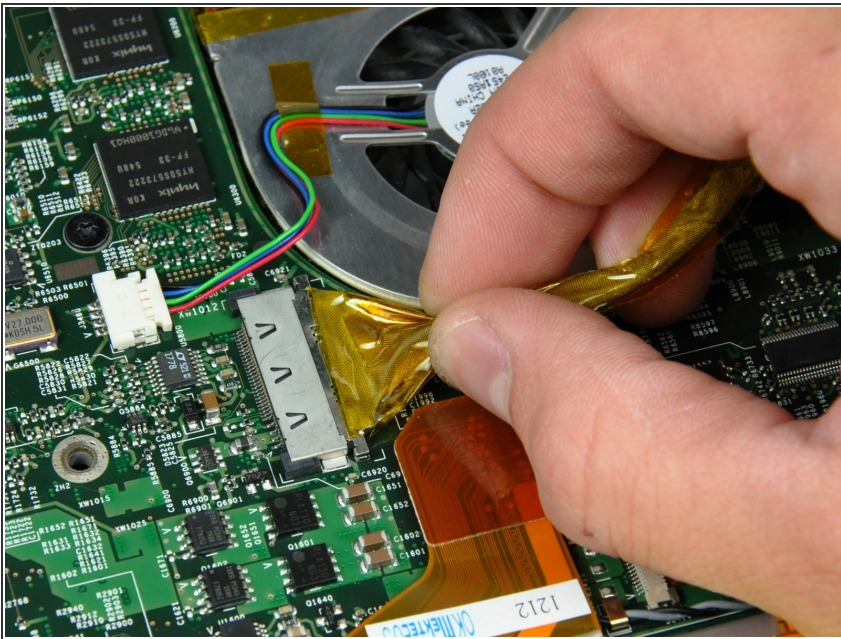
- If necessary, remove the piece of tape and EMI foam covering the AirPort/Bluetooth antennas.
- ☑ Don't forget to reapply this piece of tape during reassembly. It insulates the bare antenna connectors from the metal PC card cage.

Step 26



- Use the flat end of a spudger to pry both antenna connectors up off the AirPort/Bluetooth board.

Step 27 — Display



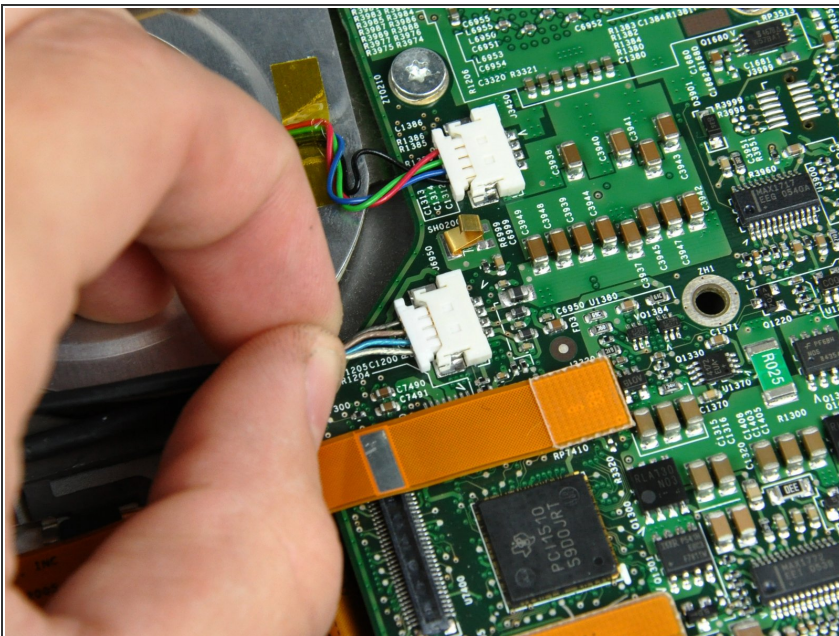
- Pull the display data cable away from its socket to disconnect it from the logic board.
- ⚠ Be sure to pull only parallel to the face of the logic board, as pulling up on the socket will break it off the logic board.

Step 28



- If necessary, use the tip of a spudger to remove the small piece of foam tape from the side of the left speaker.

Step 29



- Disconnect the inverter cable from the logic board.
- ⚠ Be sure to pull only parallel to the face of the logic board, as pulling up on the socket will break it off the logic board.
- ⓘ When pulling this connector away from its socket, it is helpful to use your fingernails to pull on the ears at each side of the connector.

Step 30



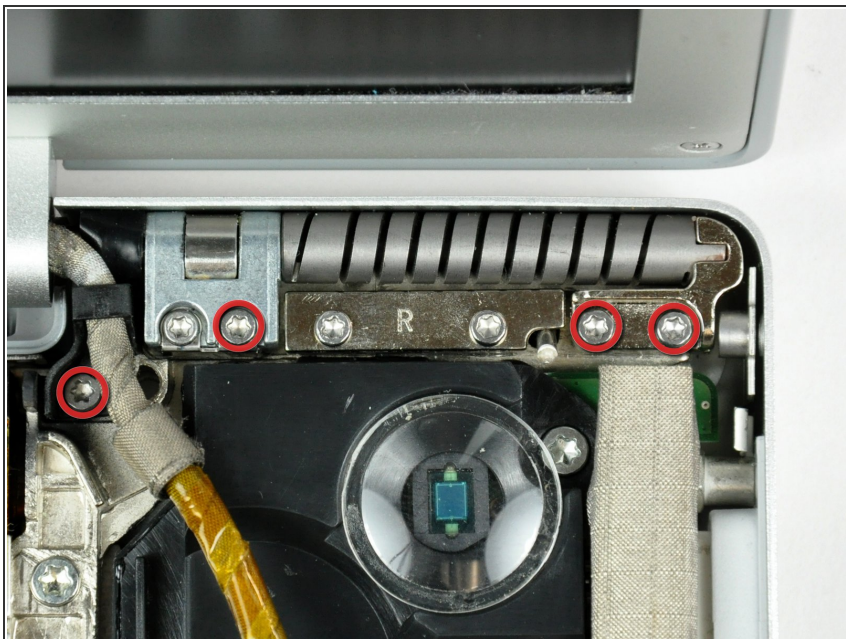
- De-route both AirPort/Bluetooth antennas and the inverter cable from underneath the DC-in board ribbon cable.
- ⓘ It is not necessary to remove the DC-in board cable.

Step 31



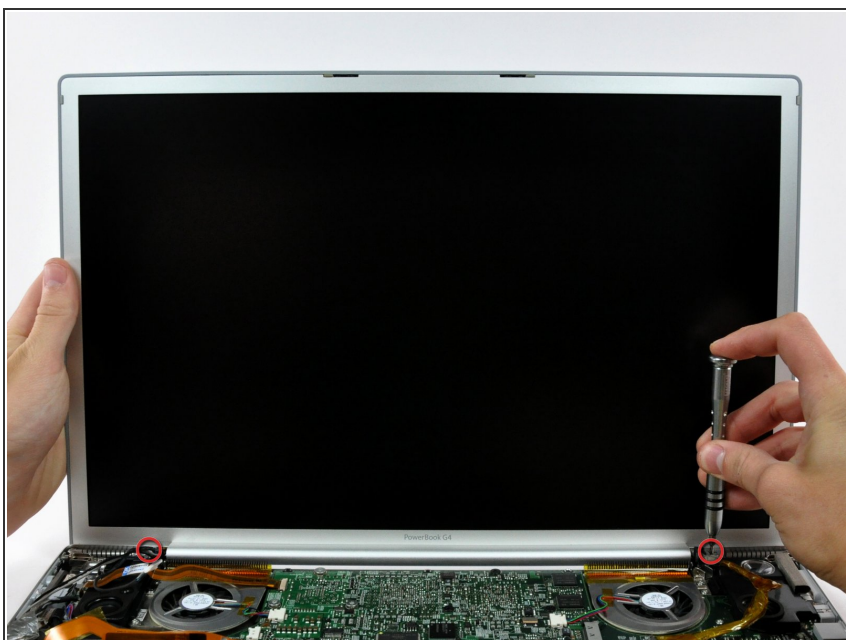
- ⓘ Before proceeding, be sure your display is perpendicular to the lower case.
- Remove four T6 Torx screws from the left display hinge. 2- 8 mm and 1 -10 mm and one 6 mm left to right.
- ⓘ We intentionally have you leave one screw in the left display hinge to aid in disassembly.
- ⓘ The screw holding the plastic display cable bracket to the lower case is shorter than the rest.

Step 32



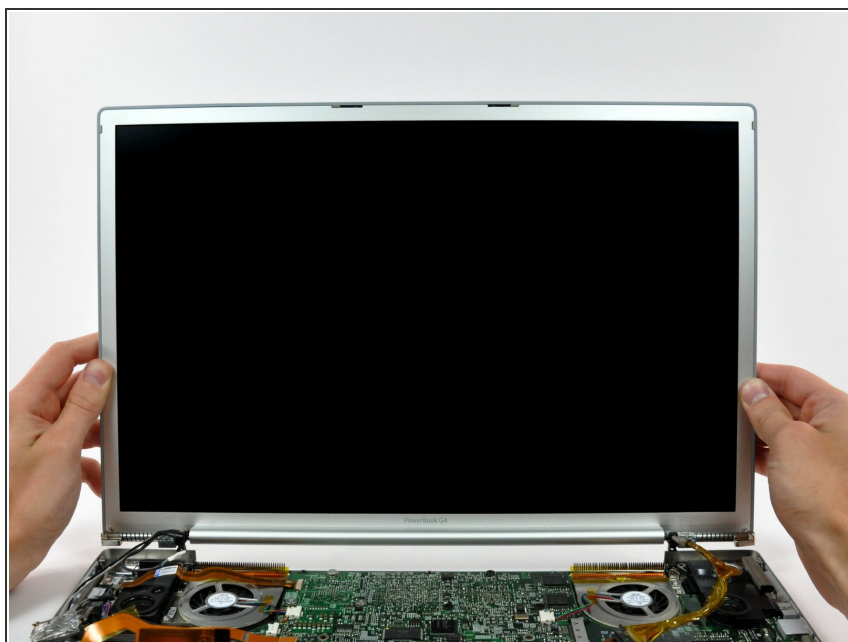
- Remove four T6 Torx screws from the right display hinge. 2- 8 mm and 1 -10 mm and one 6 mm right to left.
- ⓘ We intentionally have you leave one screw in the right display hinge to aid in disassembly.
- ⓘ The screw holding the plastic display cable bracket to the lower case is shorter than the rest.

Step 33



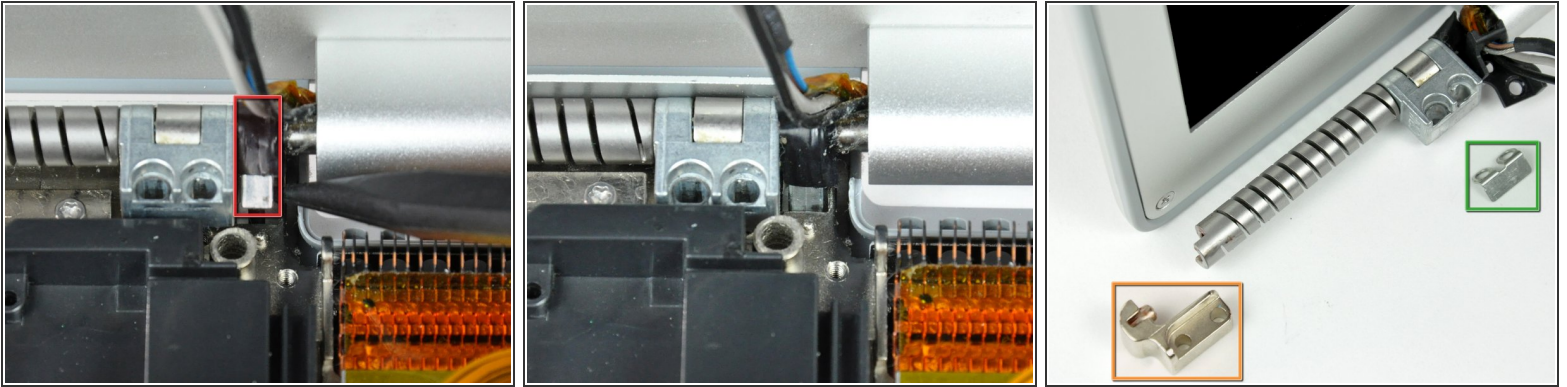
- While supporting the display with one hand, remove the one remaining T6 10 mm Torx screw from each display bracket (two screws total).

Step 34



- Lift the display straight up from the lower case, minding any cables that may get caught.

Step 35



✦ Here are a few tips for reassembling the display. These apply to both the left and right display brackets:

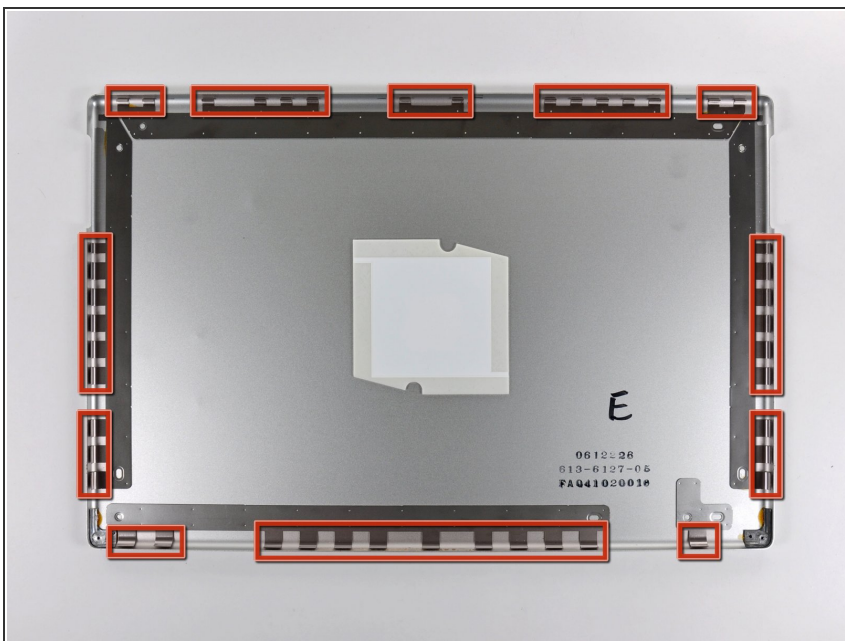
- A small bracket (shown in red) near either side of the clutch cover is free to rotate about the display hinge and must be inserted behind the heat sink framework for the display to seat properly.
- Before completely lowering the display onto the lower case, use a spudger to rotate the bracket toward the rear edge of your PowerBook, and insert the bracket between the heat sink framework and the adjacent spring. The second picture shows the bracket correctly installed.
- When removing the display screws, keep track of the thin metal bracket (shown in green) under the screws on the inner display bracket.
- The outer display bracket (shown in orange) simply slides onto the spiral display spring. Be sure to press it on before installing your display into the lower case.

Step 36 — Rear Display Bezel




- Remove the single Phillips screw from the lower left and right corners of the display.

Step 37




- ⓘ The picture at left (rear panel already removed) shows the locations of the metal clips (shown in red) that snap on to the front display bezel. In the next few steps, you will use a small flathead screwdriver to release these clips from a ridge around the perimeter of the front display bezel.

 When prying in the following steps, be sure not to damage the antenna cables that run around the perimeter of the front display bezel.

Step 38



- Insert the flat end of a spudger between the front display bezel and the plastic rim attached to the rear bezel near the lower right corner of the display.

 **Do not** try to insert the spudger between the front display bezel and its plastic surround.

- While carefully prying the rear display bezel away from the display assembly, use a small flathead screwdriver to pry the small steel clip nearest the bottom right corner of the display away from the edge of the front display bezel.
- Repeat the above procedure until you've released all the clips along the right side of the display.

Step 39



- Slightly lift the recently-freed corner of the rear display bezel to separate the clips along the span of the clutch hinges.

Step 40



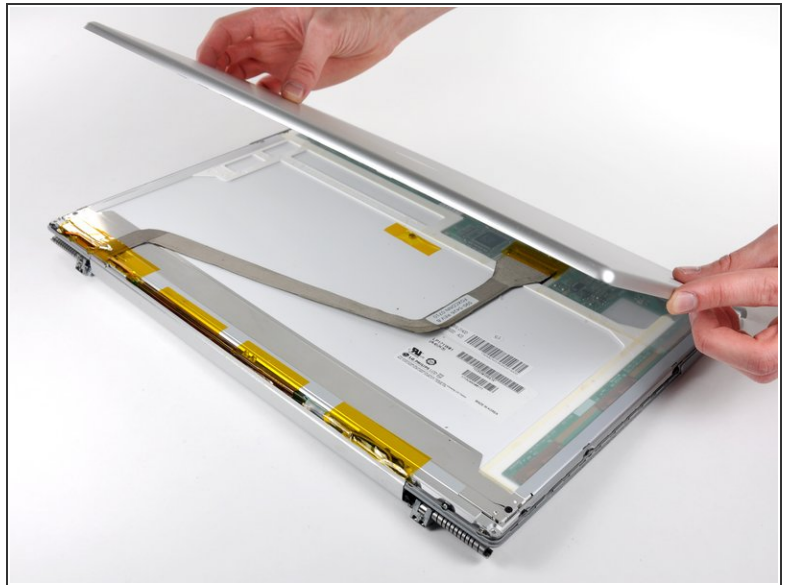
- Insert the flat end of a spudger between the rear display bezel and the plastic surround of the front display bezel near the lower left corner of the display.
- Carefully pry the rear display bezel away from the front display bezel to release a metal clip.

Step 41



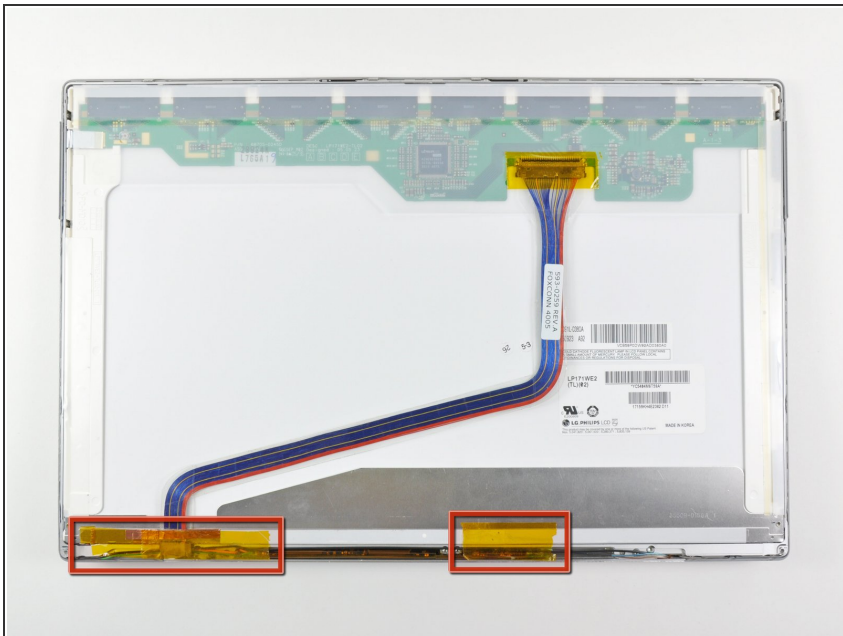
- Repeat the previous procedure to release the clips along the left side of the rear display bezel.

Step 42



- Slightly lift the lower edge of the rear display bezel and push it toward the top edge of the display, releasing the clips along the top edge of the rear display bezel.
- Remove the rear display bezel and set it aside.

Step 43 — Display Inverter



- ❗ If present, remove the pieces of tape along the bottom edge of the LCD.

Step 44



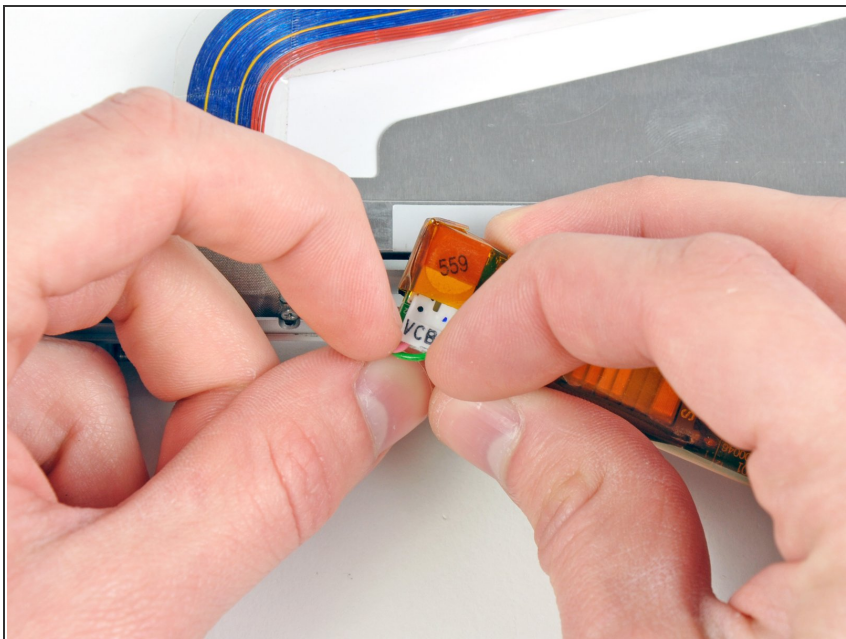
- Use the tip of a spudger to lift the display inverter enough to grab it with your fingers.
- Lift the display inverter out of the clutch hinges enough to access both of its connectors.

Step 45



- Disconnect the inverter cable from its socket on the display inverter.

Step 46



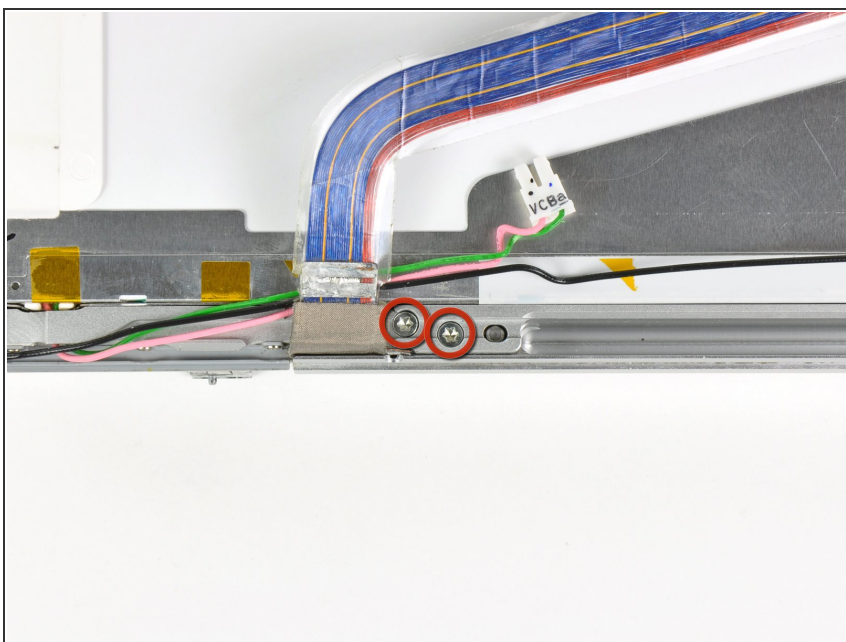
- Disconnect the backlight cable from its socket on the display inverter.

Step 47



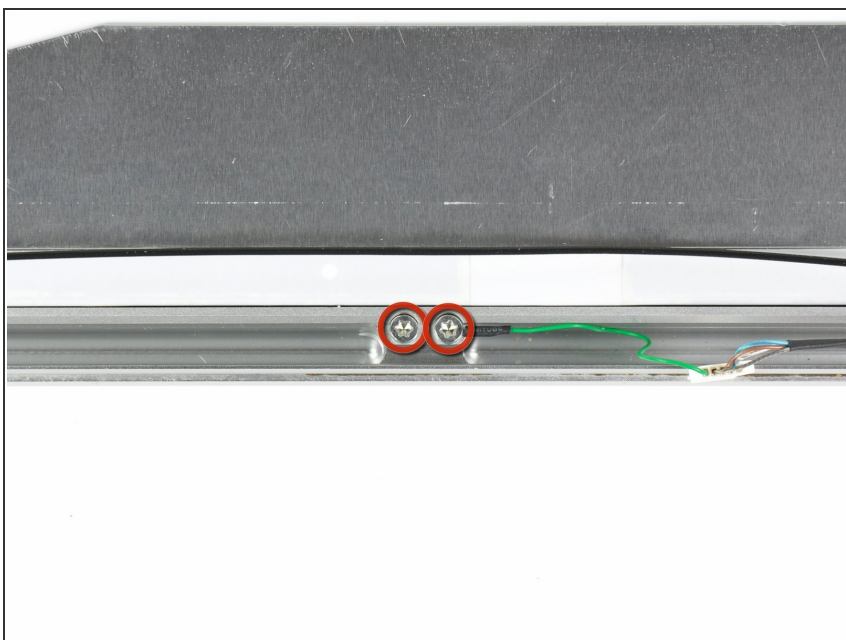
- Remove the inverter from the display.

Step 48 — Clutch Hinges



- Remove the two 10.3 mm T8 Torx screws securing the clutch hinges near the display data cable.

Step 49



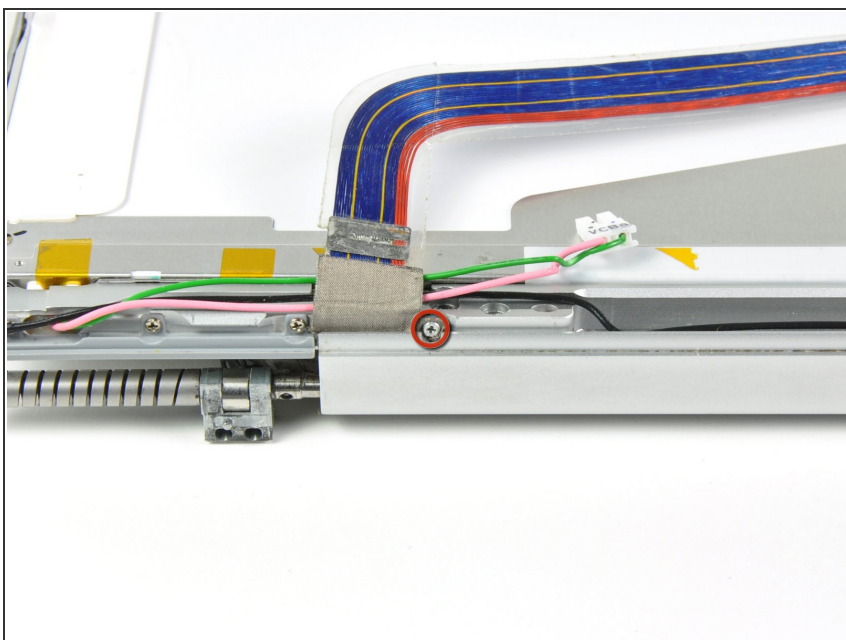
- Remove the two 10.3 mm T8 Torx screws securing the center of the clutch hinges.

Step 50



- Remove the last pair of 10.3 mm T8 Torx screws securing the clutch hinges to the front display bezel.

Step 51



- Remove the 2.7 mm Phillips screw securing the display data cable ground loop to the front display bezel.

Step 52



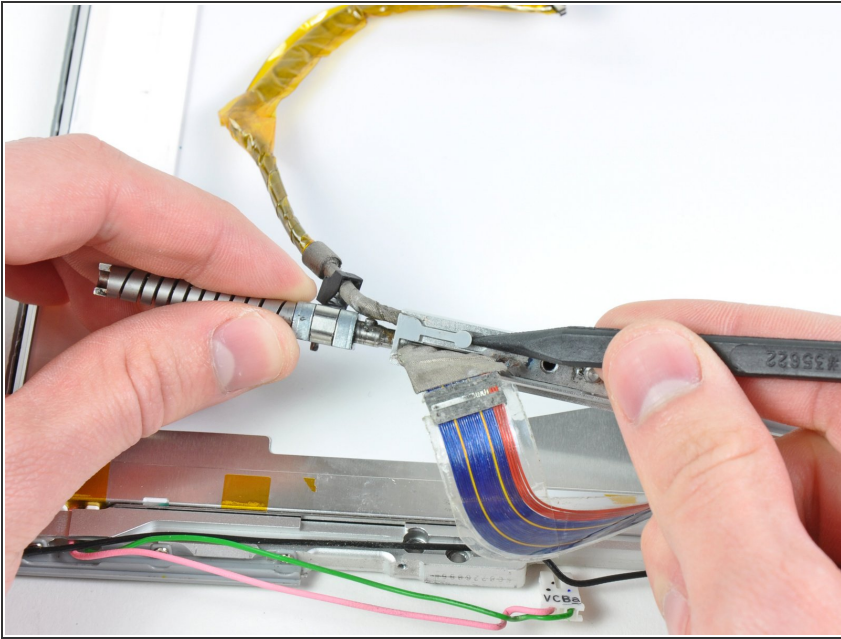
- Pull the clutch hinges away from the front display bezel.
- Use the tip of a spudger to remove the gray plastic end cap from the inverter cable side of the clutch hinges.

Step 53



- Pull the inverter and antenna cables out of their slot in the clutch hinges.

Step 54



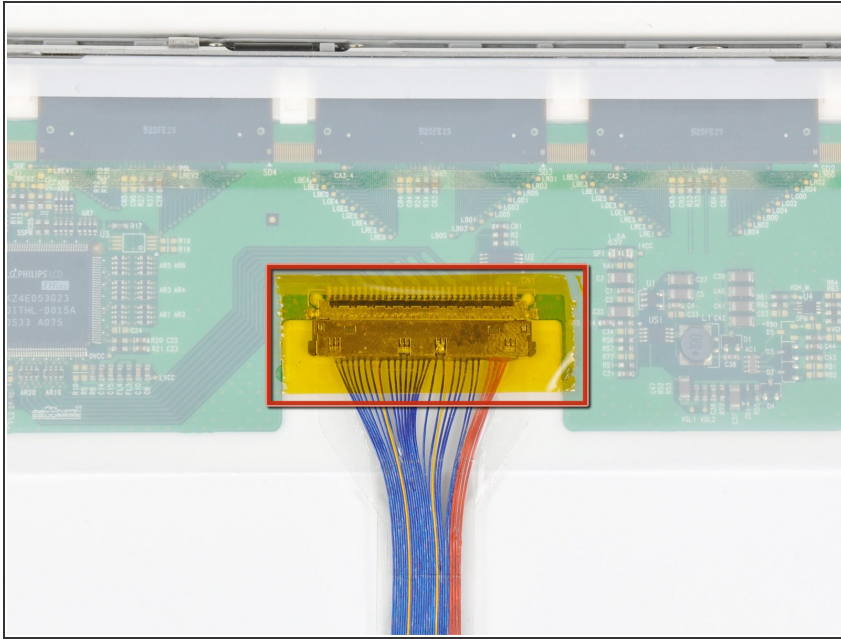
- Use the tip of a spudger to remove the gray plastic end cap from the display data cable side of the clutch hinges.

Step 55



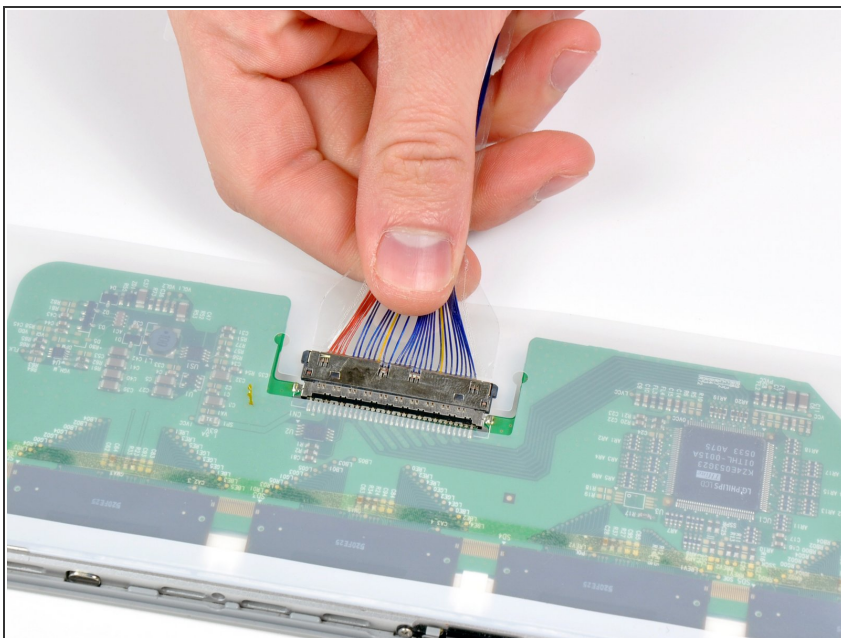
- Slide the display data cable out of its slot in the clutch hinges.
- Remove the clutch hinges from the display.

Step 56 — Display Data Cable



- i** If present, remove the strip of tape covering the display data cable connector.

Step 57



- Disconnect the display data cable from the LCD.

Step 58



- Display data cable remains.

To reassemble your device, follow these instructions in reverse order.