



# MacBook Pro 13" Retina Display Early 2015 Display Assembly Replacement

Use this guide to replace the Retina display,...

Written By: Andrew Optimus Goldheart



# INTRODUCTION

Use this guide to replace the Retina display, display glass, and iSight camera assembly.



## TOOLS:

- [P5 Pentalobe Screwdriver Retina MacBook Pro and Air](#) (1)
- [Spudger](#) (1)
- [T5 Torx Screwdriver](#) (1)
- [TR8 Torx Security Screwdriver](#) (1)
- [Tweezers](#) (1)



## PARTS:

- [MacBook Pro 13" Retina \(Early 2015\) Display Assembly](#) (1)

## Step 1 — Lower Case



- Remove the following ten screws securing the lower case to the upper case:
  - Two 2.3 mm P5 Pentalobe screws
  - Eight 3.0 mm P5 Pentalobe screws
- ☑ Throughout this repair, [keep track of each screw](#) and make sure it goes back exactly where it came from to avoid damaging your device.



## Step 2



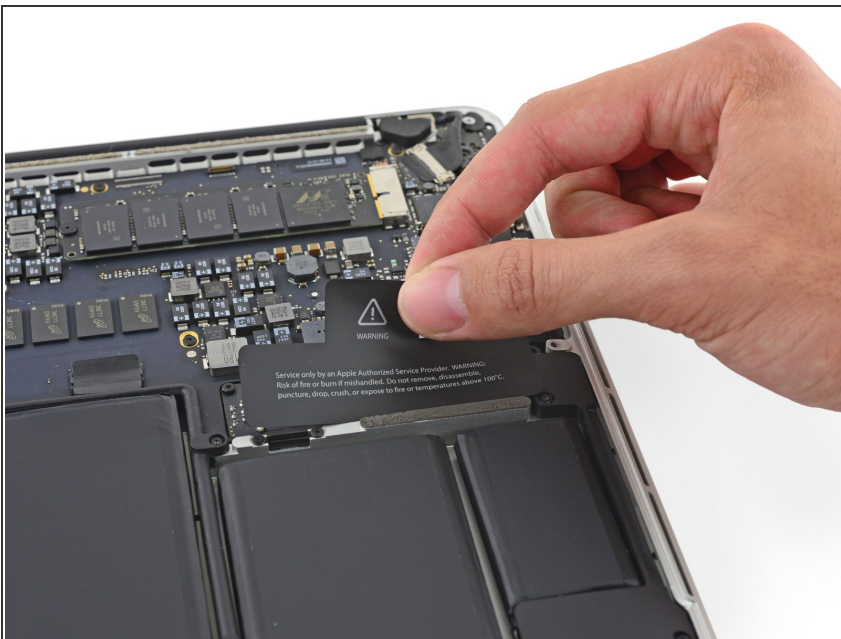
- Wedge your fingers between the upper case and the lower case.
- Gently pull the lower case away from the upper case to remove it.


## Step 3



-  The lower case is connected to the upper case with two plastic clips near its center.
-  During reassembly, gently push down the center of the lower case to reattach the two plastic clips.

## Step 4 — Battery Connector



-  If necessary, remove the plastic cover adhered to the battery contact board.



## Step 5



- Use the flat end of a spudger to lift the battery connector straight up out of its socket on the logic board.

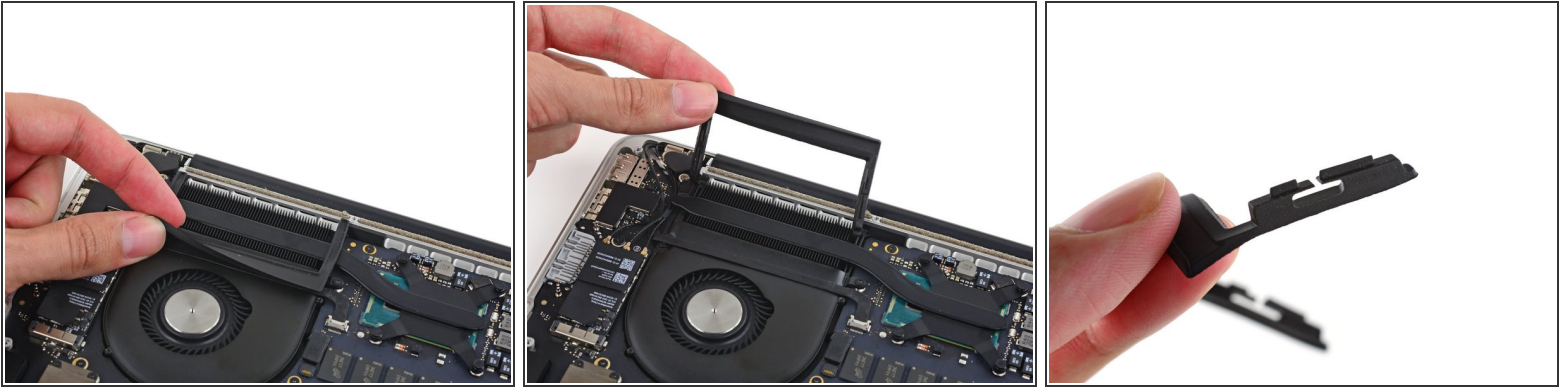
⚠ Be sure you lift up only on the connector itself, **not** the socket, or you risk permanent damage to the logic board.

## Step 6



- ☑ Bend the battery connector up out of the way to prevent accidental contact with its socket during your repair.

## Step 7 — Display Assembly



- Carefully peel the rubber fan bumper from the edge of the heat sink to expose the iSight camera cable adhered to the fan.
- ☛ The fan bumper wraps around the heat sink and fits into the fan duct slots. During reassembly, be sure to fit the tabs into the notches in the fan duct.

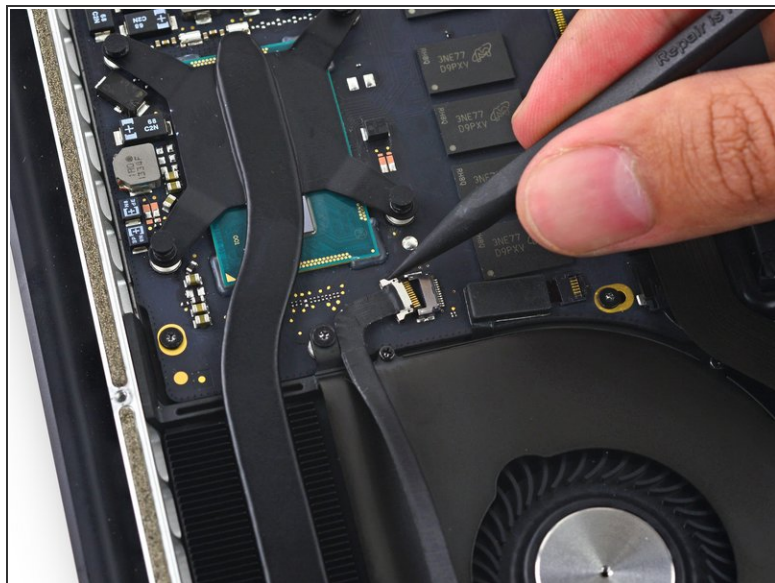
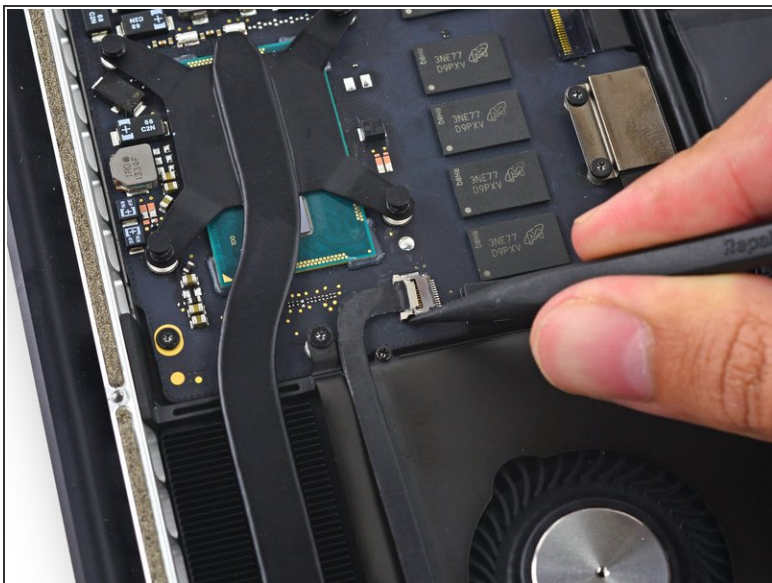
## Step 8



- Insert the tip of a spudger under each of the antenna cables near their connectors and pry up to disconnect them from the AirPort board.
- ☛ The three cables are coded with black sleeves of different lengths. During reassembly:
  - Connect the long-sleeved cable to the center socket.
  - The short-sleeved cable connects next to the screw.
  - The remaining cable has no sleeve, and connects in the last empty socket, next to the fan.

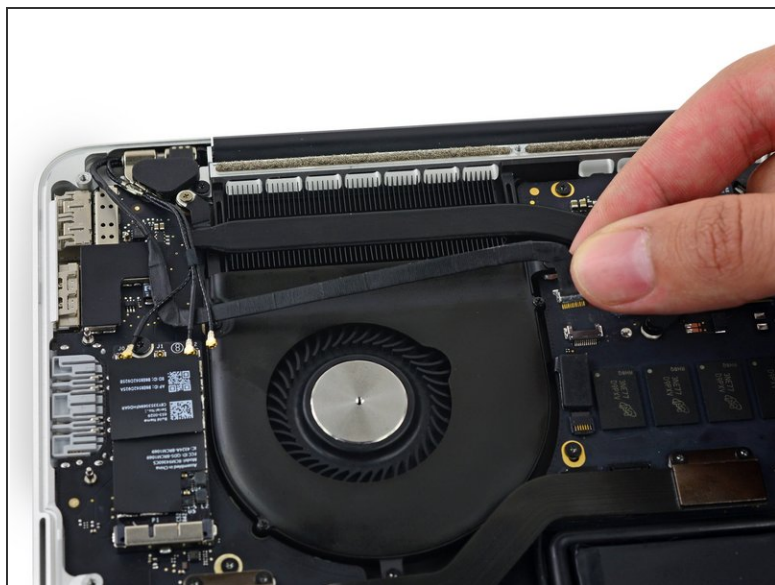
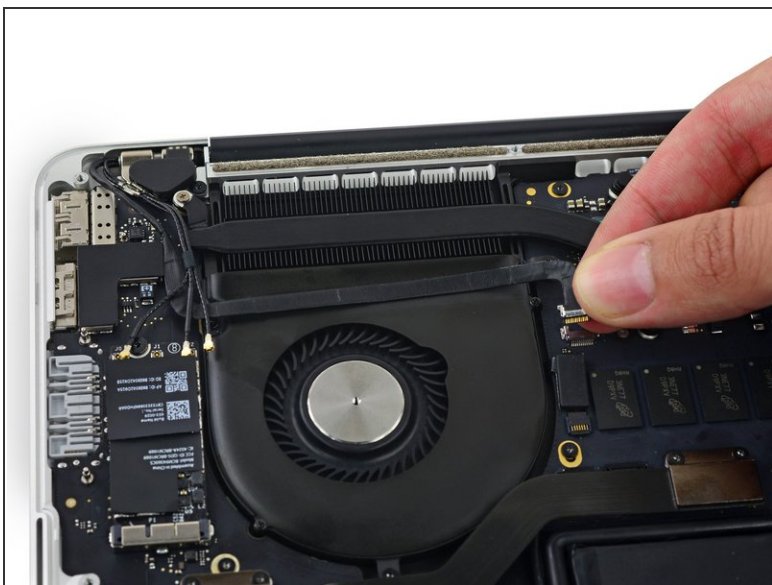


## Step 9



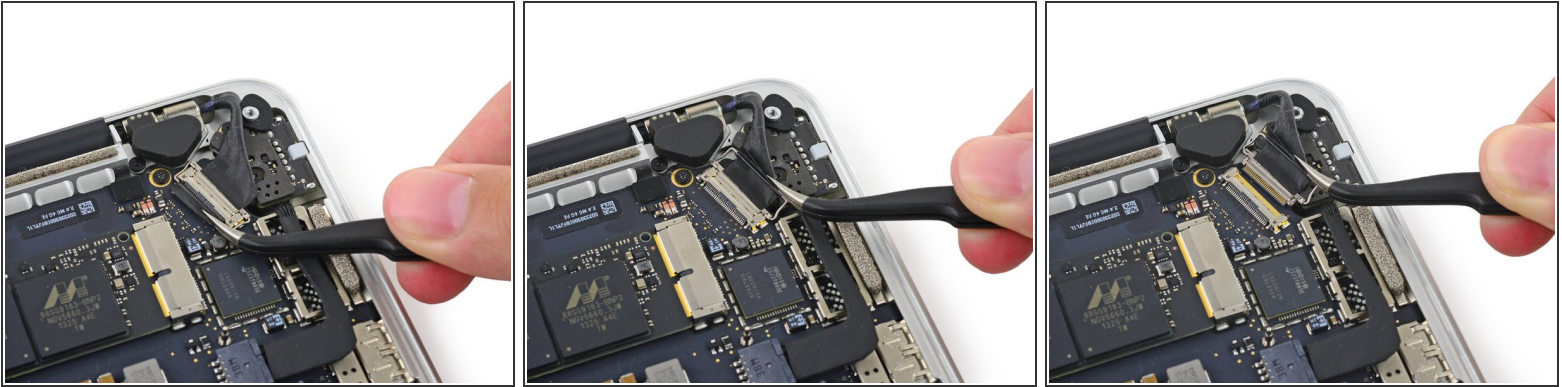
- Use the tip of a spudger to push on either side of the the iSight camera cable connector to *walk* it out of its socket on the logic board.

## Step 10



- Peel the iSight camera cable up off the fan housing.

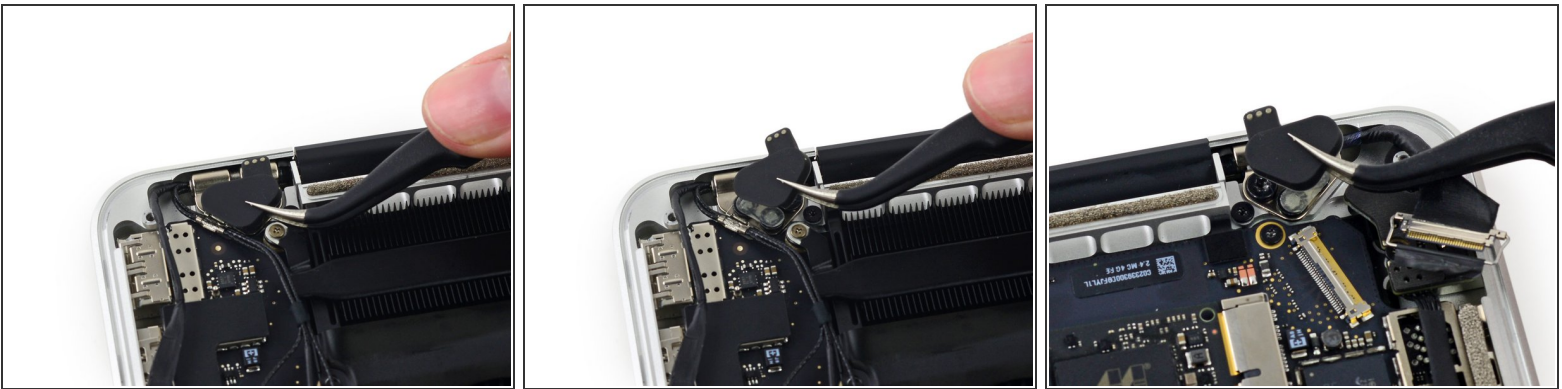
## Step 11



- Grab the black plastic tab to flip the display cable connector open and pull it straight out of its socket on the logic board.

☑ During reinstallation, be sure to fully reseat the display connector tab.

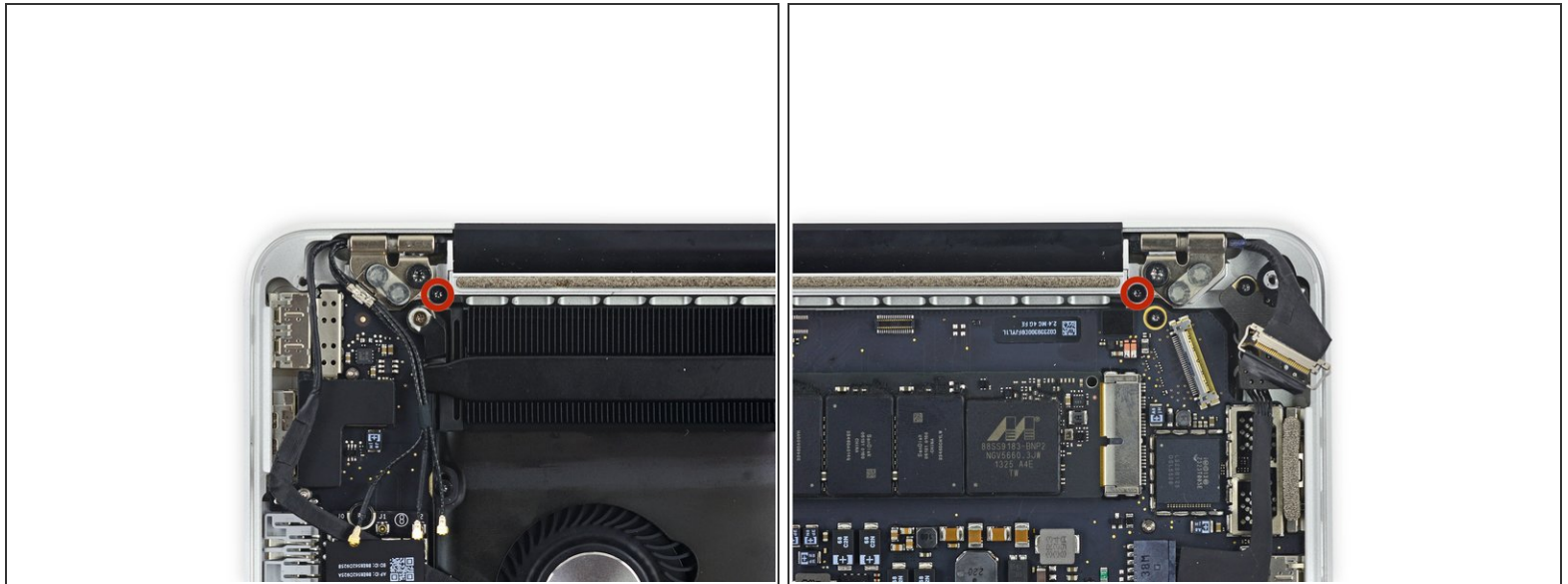
## Step 12



- Remove the rubber hinge covers from the right and left display hinges.

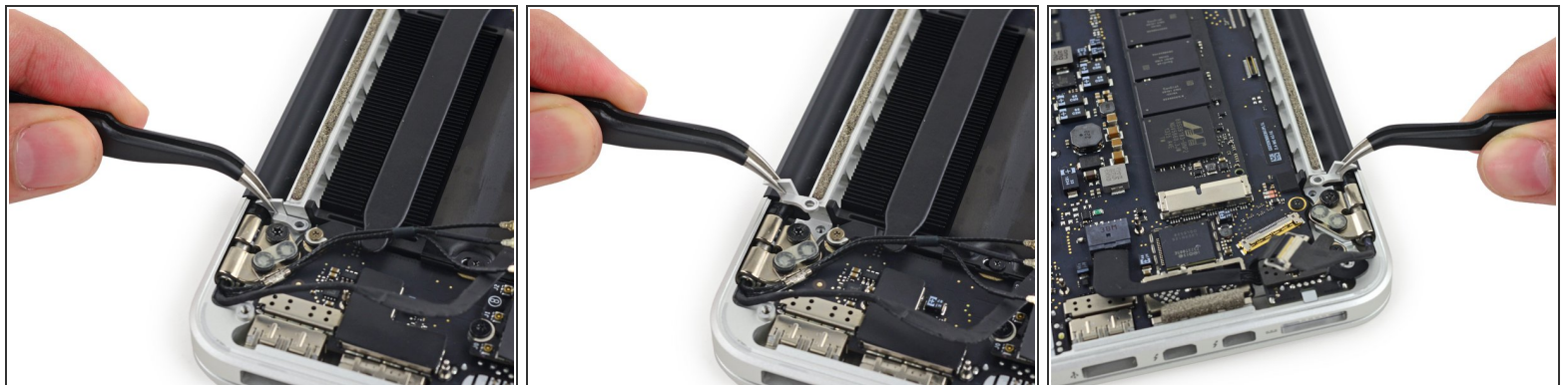


## Step 13



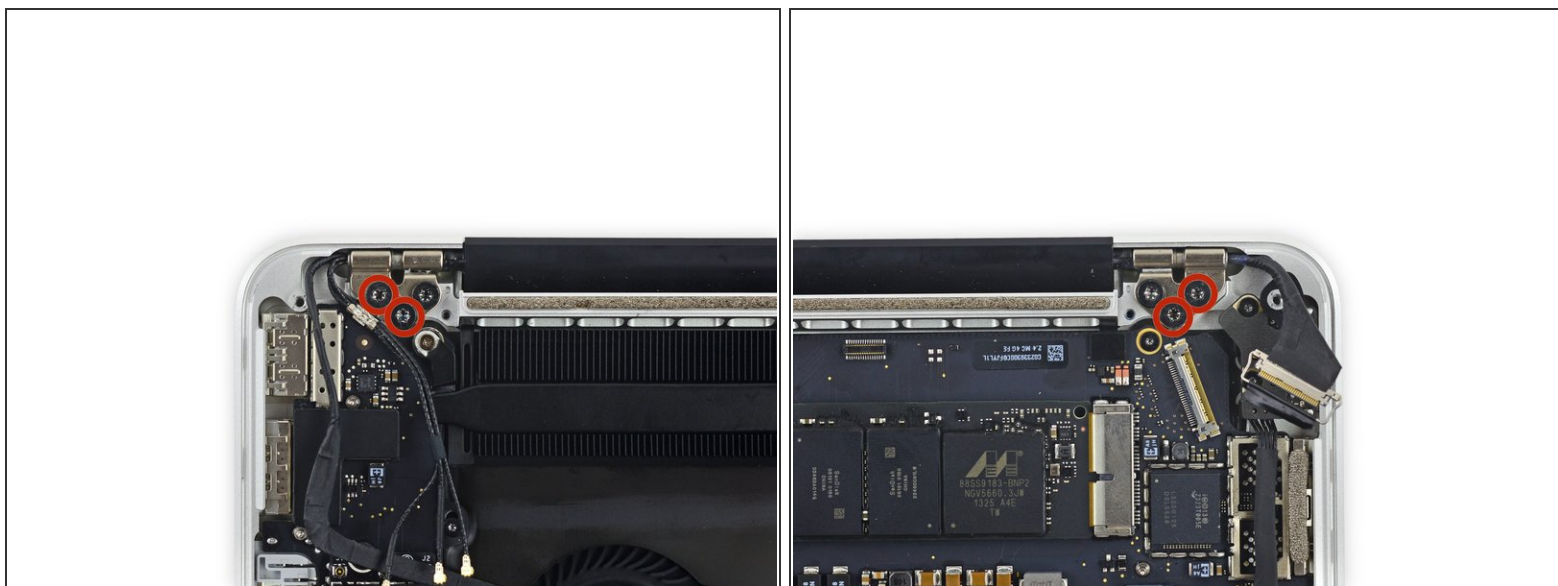
- Remove the two 4.2 mm T5 Torx screws securing the aluminum hinge brackets (one on each side of the Macbook).

## Step 14



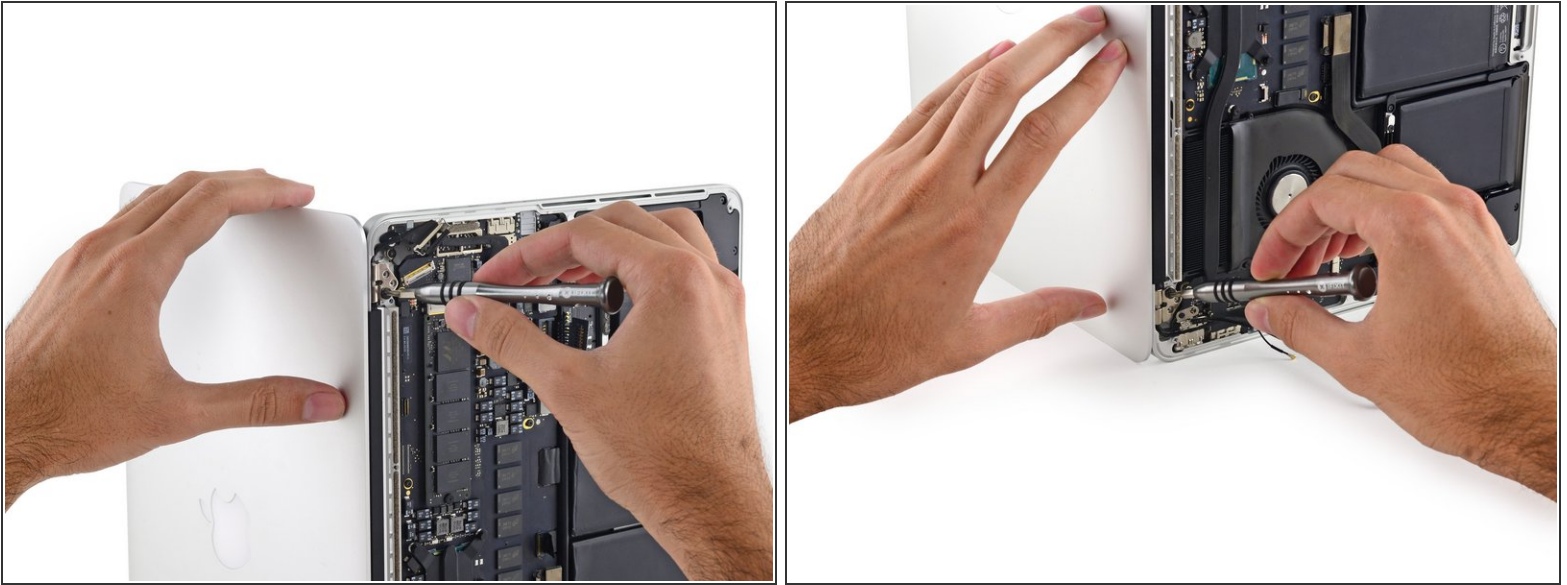
- Use a pair of tweezers to lift aluminum hinge brackets off the right and left display hinges.
- ☑ During reassembly, the vertical portion of the bracket should be in line with the aluminum rail in the center of the Macbook.

## Step 15



- Remove the four outer 5.3 mm T8 Torx screws (two on each side) securing the display to the upper case.
  - ⓘ Some models may use T9 Torx screws rather than T8.
  - ⓘ If the rubber hinge cover adhesive is still on the screw heads, use tweezers to peel and remove it.

## Step 16



**i** Open the MacBook Pro a little wider than 90 degrees, and place it on end on the table, as shown.

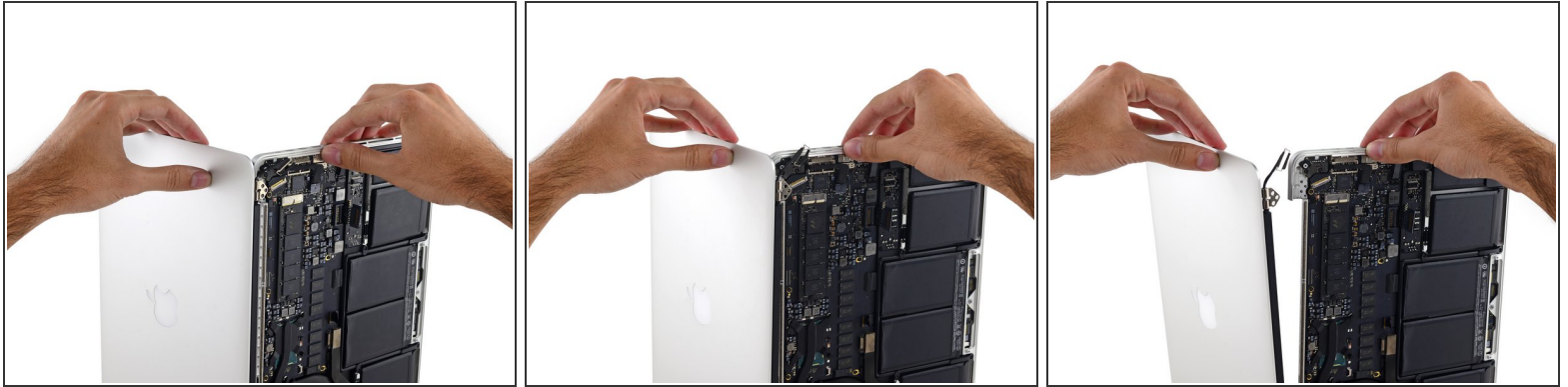
- While holding the display with your left hand, remove the remaining T8 Torx screw from the upper display bracket.

**!** Be sure the display and upper case are balanced and will not fall, potentially damaging each component.

- Remove the last remaining T8 Torx screw securing the display to the upper case.



## Step 17



- Grab the upper case with your right hand and rotate it slightly clockwise, toward the top of the display, so the display brackets clear the edge of the upper case.
- Rotate the display slightly away from the upper case.
- Pull the display away from the upper case, minding any brackets or cables that may get caught.

To reassemble your device, follow these instructions in reverse order.