



# Olympus Stylus Tough TG-2 iHS Battery and Connector Seals Replacement

This guide will illustrate how to access and remove the battery and connector cover seals.

Written By: Amanda



## INTRODUCTION

Have your seals been damaged? It may be time to replace them. This guide will walk you through the simple steps to access and replace your battery and connector cover seals.

---

### TOOLS:

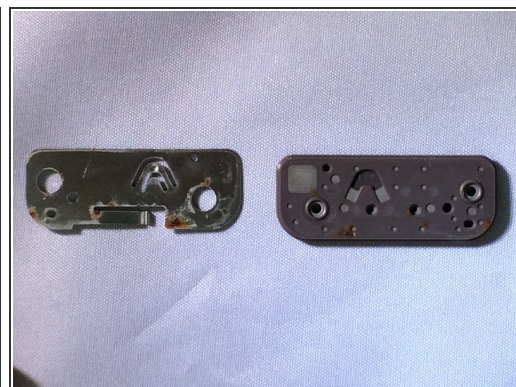
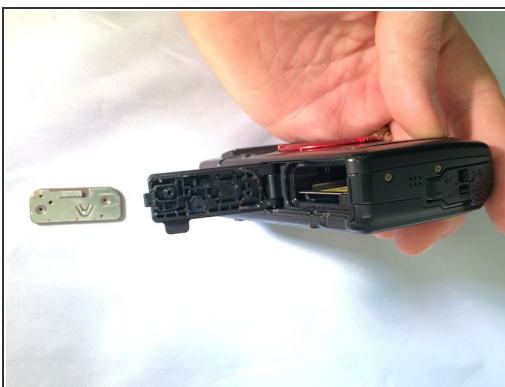
- [Phillips #0 Screwdriver](#) (1)
  - [Spudger](#) (1)
-

## Step 1 — Battery and Connector Seals



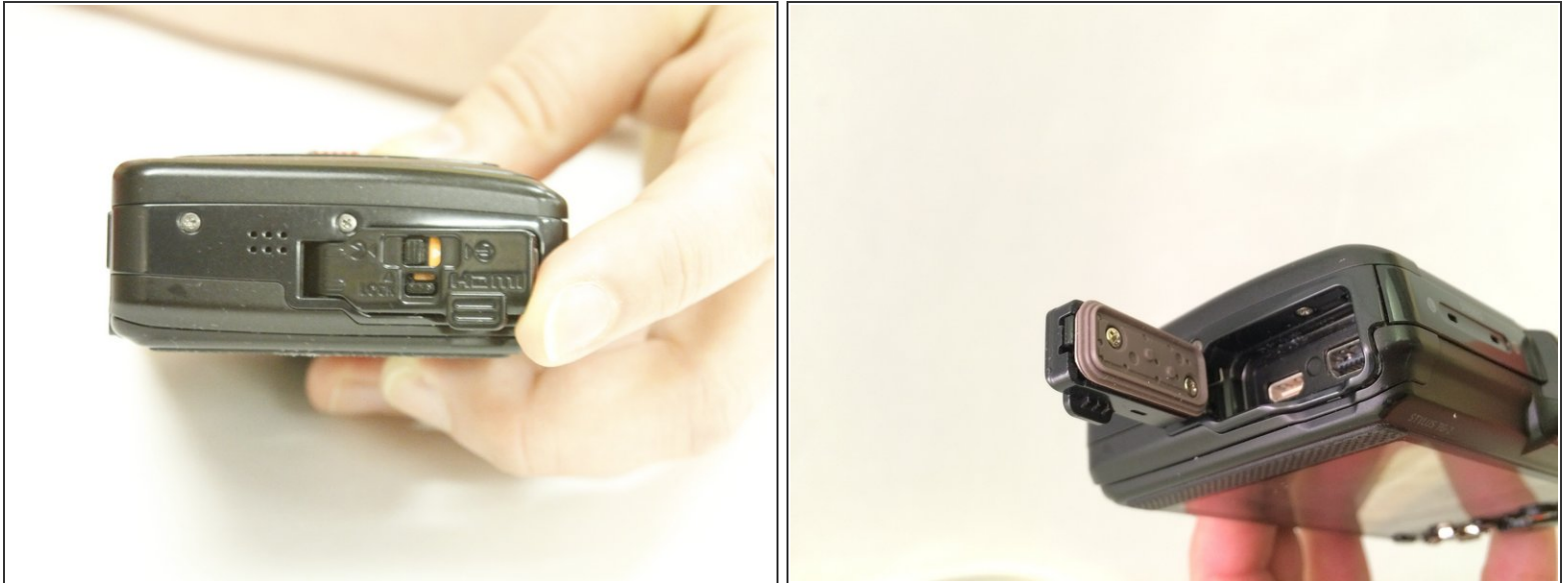
- Locate the battery/card cover on the bottom of the camera. .
- Slide the tab labeled *lock* to show orange.
- Slide the battery/card cover lock to revile orange and the door will spring open.

## Step 2



- Remove the 2 Phillips #00 screws on the inner battery door.
- Use a spudger to release the seal and metal clip.
- Replace the seal.

### Step 3



- Locate the connector cover on the side of the camera.
- Slide the tab labeled *lock* to show orange.
- Slide the connector cover lock to revile orange and the door will spring open.

### Step 4



- Remove the 2 Phillips #00 screws on the inner connector door.
- Use a spudger to release the seal, the clear plastic piece, and the metal piece.

To reassemble your device, follow these instructions in reverse order.

This document was generated on 2020-11-14 08:13:45 PM (MST).

