



CH7284E Wireless Voice Gateway Teardown

Teardown of CH7284E router from Compal Broadband Networks (CBN) supplied from Swedish ISP Comhem.

Written By: Bo



INTRODUCTION

CH7284/E DOCSIS/EuroDOCSIS 3.0 16X4 Wireless Voice Gateway

The CH7284/E includes a dual band concurrent 2x2 2.4GHz 802.11n and 3x3 5GHz 11ac wireless access point and an enhanced tuner that supports up to a 1GHz downstream full band capturing that allows operators to increase the frequency spectrum for deployment of new high-value services, such as remote diagnostics, bandwidth on-demand, commercial services, interactive gaming, and IPTV to their customers.

2.4GHz 802.11n/5GHz 802.11ac AC1500

- LAN:Two 10/100/1000 Mbps auto-sensing , Auto Uplink RJ-45 ports
- One RJ-11 voice port
- 2.4 GHz 2X2 11n and 5GHz 3X3 11ac Dual band concurrent

Dimensions: 132x132x36 mm

http://www.icbn.com.tw/products/product_...



TOOLS:

- [T10 Torx Screwdriver](#) (1)
 - [Adjustable Wrench](#) (1)
-

Step 1 — CH7284E Wireless Voice Gateway Teardown



- 12V 2.0A powerbrick.

Step 2



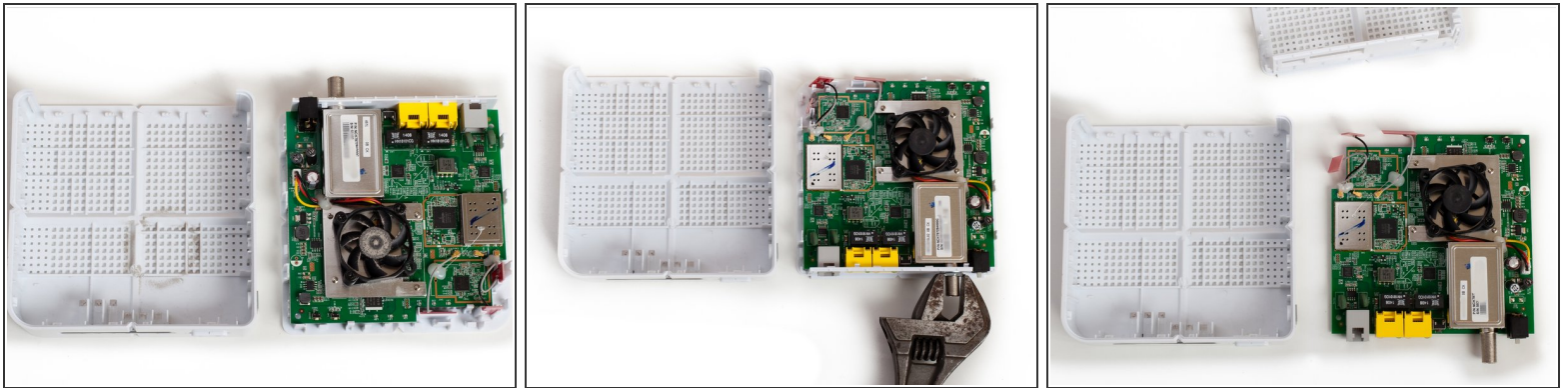
- Lift rubber feet and reveal the two Torx 10 screws.

Step 3



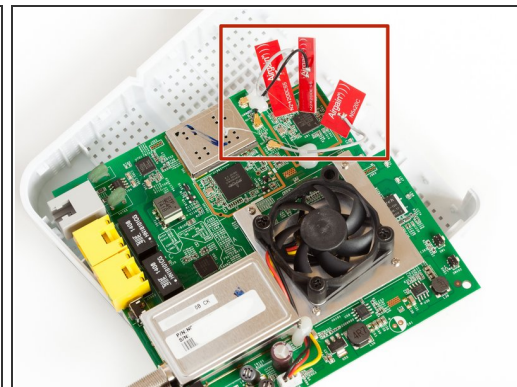
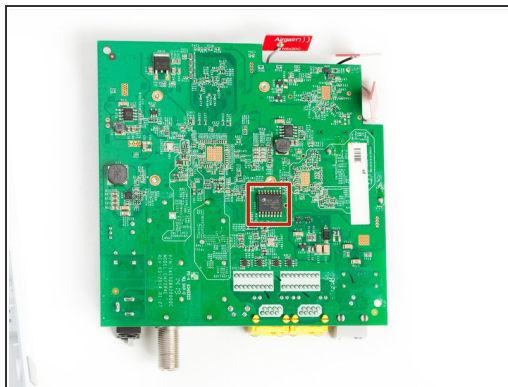
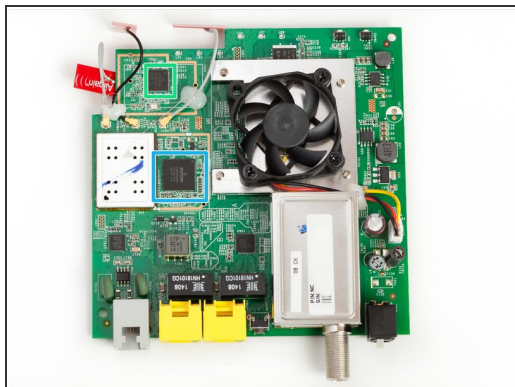
- Pry case open. Dont worry, it's a fairly easy unit to open.

Step 4



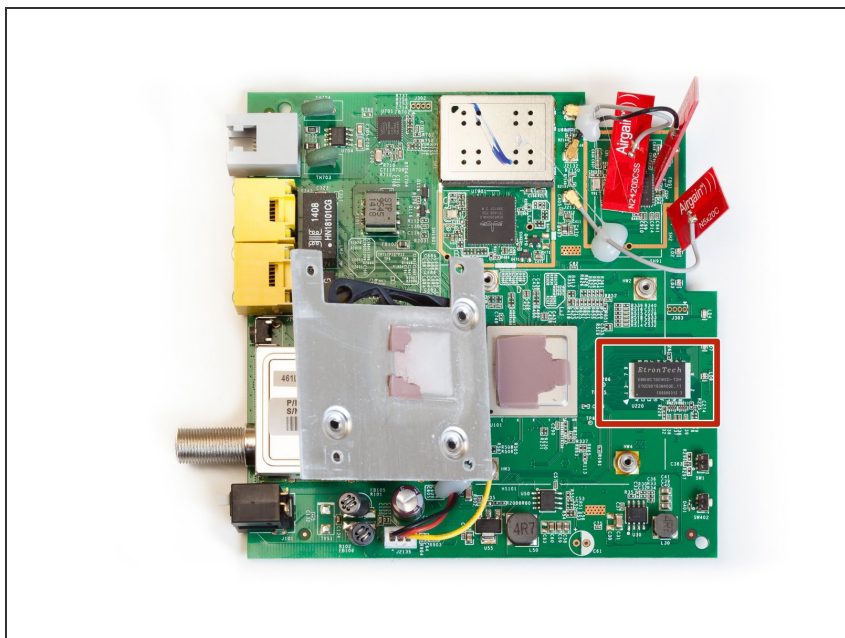
- This router has a fan. And it gets dusty. Bring out your can of compressed air!
- Remove the nut from the coax port with a wrench.
- Lift up the three Wifi antennas from their slots.
- Push two plastic tabs downwards (located on opposite side of ports) and lift up the circuit board.

Step 5



- Two 2,4GHz and one 5GHz antennas.
- BCM4360KMLG
- BCM43217TKMLG

Step 6



- EtronTech EM6GC16EWXD-12H
- ⓘ Make sure to reapply heatsink properly.