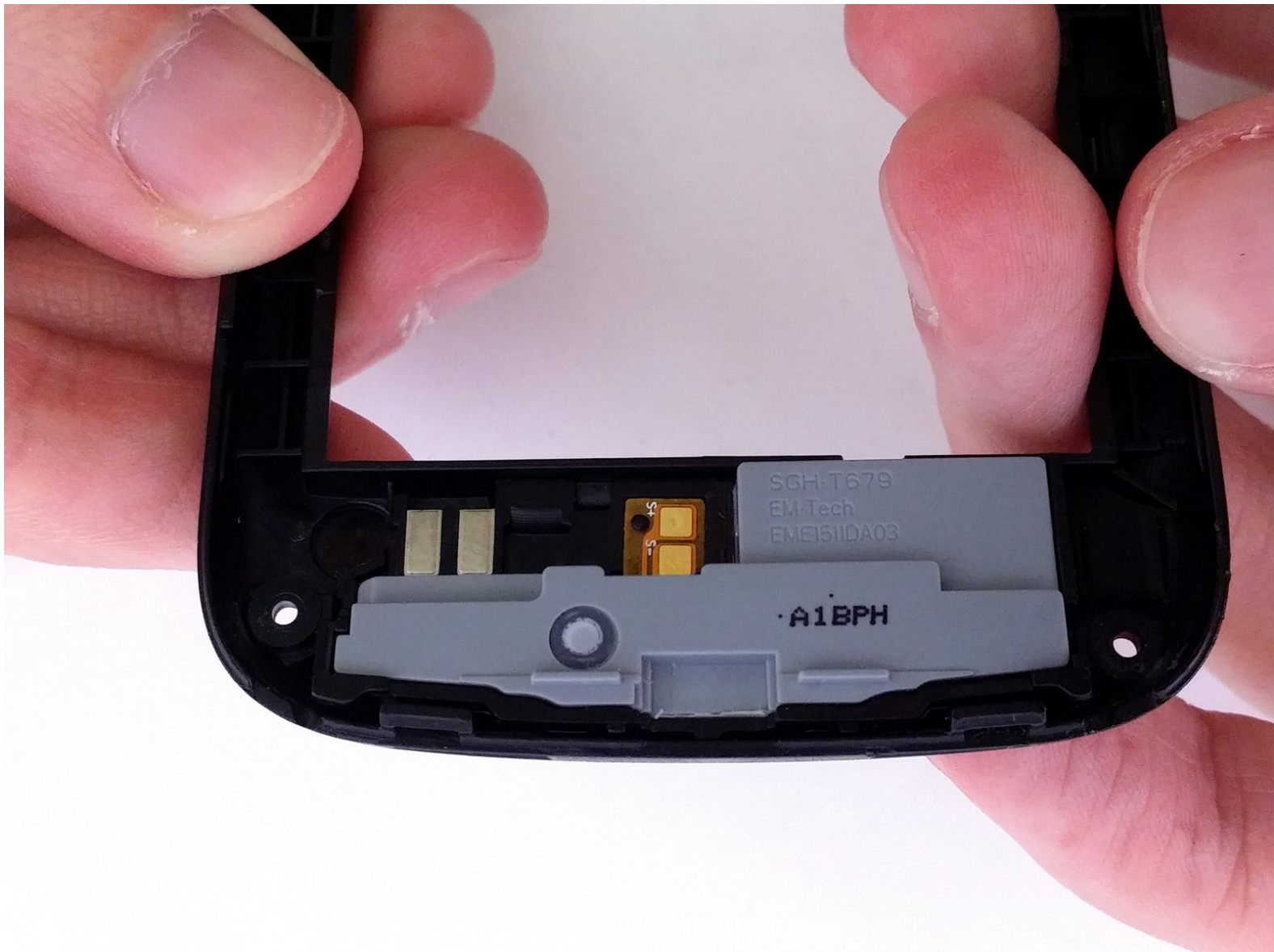




# Samsung Exhibit II 4G Loudspeaker Replacement

Replace the Loudspeaker in your Samsung Exhibit II 4G.

Written By: David R



---

## INTRODUCTION

Use this guide to replace a defective Loudspeaker.



### TOOLS:

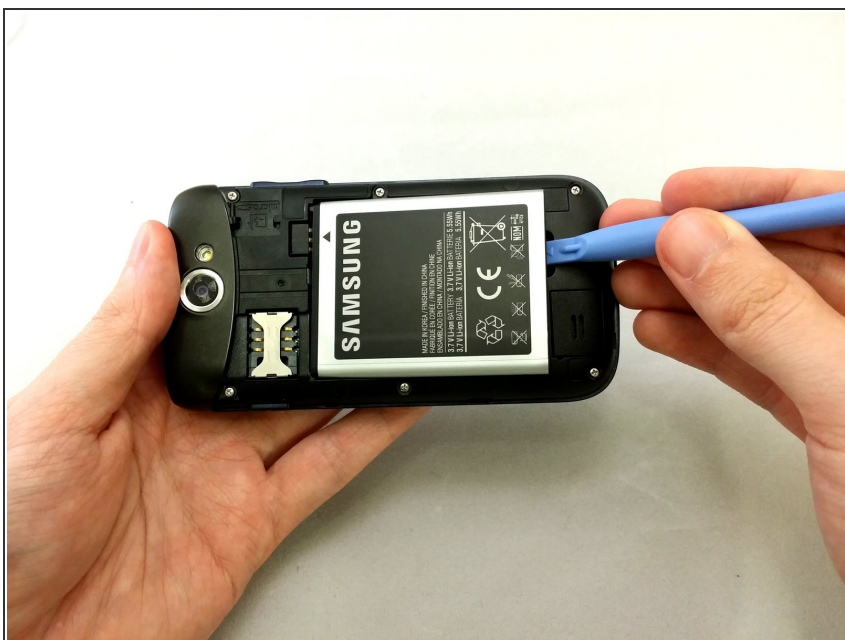
- [Phillips #000 Screwdriver](#) (1)
  - [iFixit Opening Tools](#) (1)
-

## Step 1 — Battery



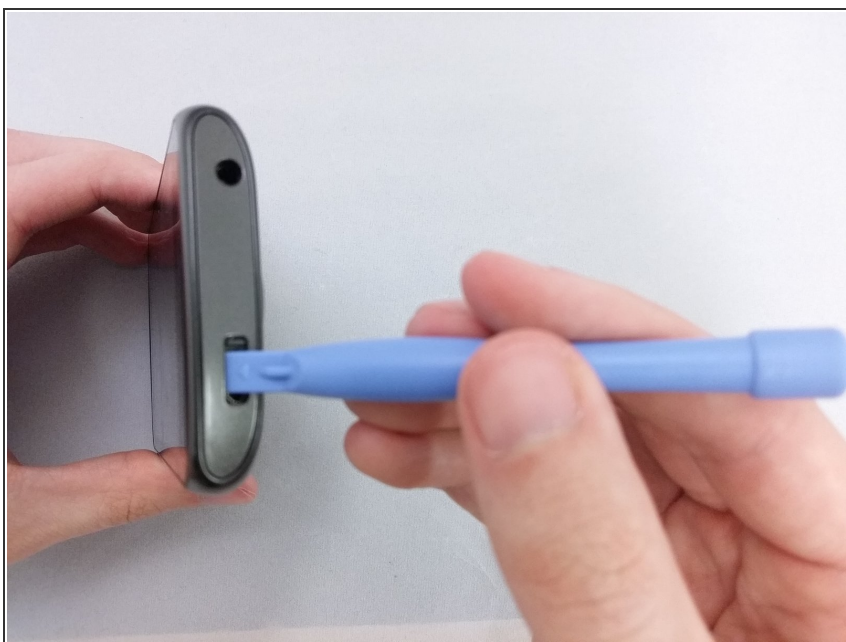
- Insert plastic opening tool under back cover.
- Apply pressure on tool while using a downward motion to pop off back cover.

## Step 2



- Insert plastic opening tool under battery.
- Pry battery out.

### Step 3 — Top Rear Housing Cover



- Insert plastic opening tool under back cover.
- Pry the top cover upward to remove it from the phone.

### Step 4



- Remove the top cover.



## Step 5



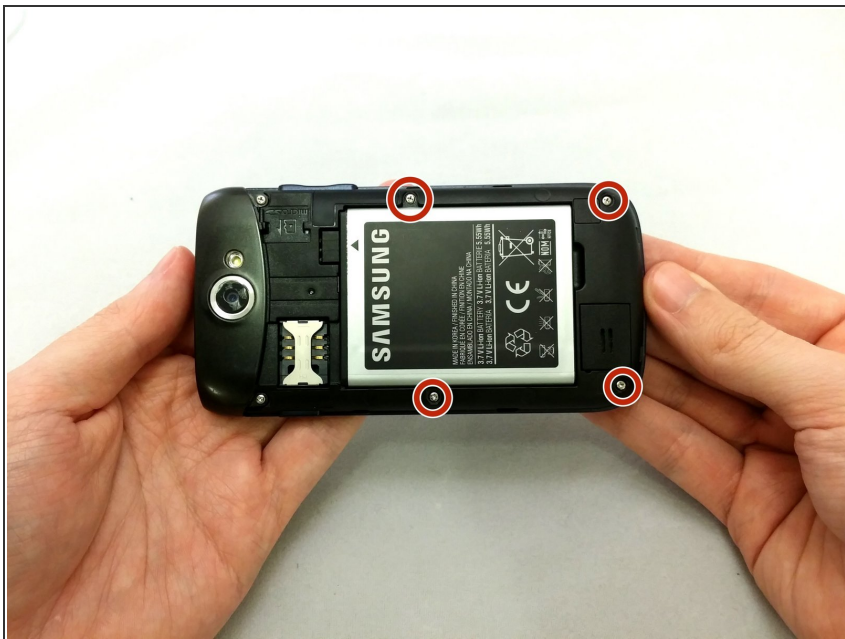
- Remove the four 3.8mm Phillips #000 screws securing the top cover to the back assembly.
- ⓘ Two screws from top and two screws from back.

## Step 6



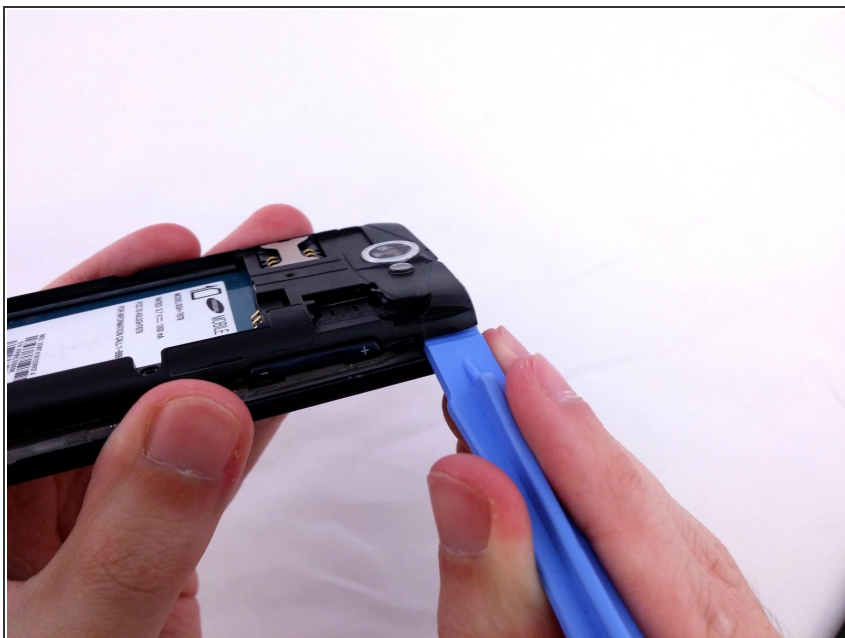
- Insert plastic opening tool under top cover.
- Using hand slide top cover away from phone.

## Step 7 — Midframe



- Remove the four 3.8mm Phillips #000 screws securing the back assembly to the phone.

## Step 8



- Insert plastic opening tool between back assembly and phone.
- Pry the back assembly away from phone.

## Step 9



- With plastic opening tool continue prying around the edge of the back assembly.

## Step 10



- Pull back panel assembly away from main body.

## Step 11 — Loudspeaker



- Position Back Panel Assembly so the internal Loudspeaker unit is facing up.
- With your index fingers and thumbs, grasp the Back Panel Assembly near the Loudspeaker.
- Twist your palms inward to apply pressure against your index fingers.
- The Loudspeaker will easily pop out.

To reassemble your device, follow these instructions in reverse order.