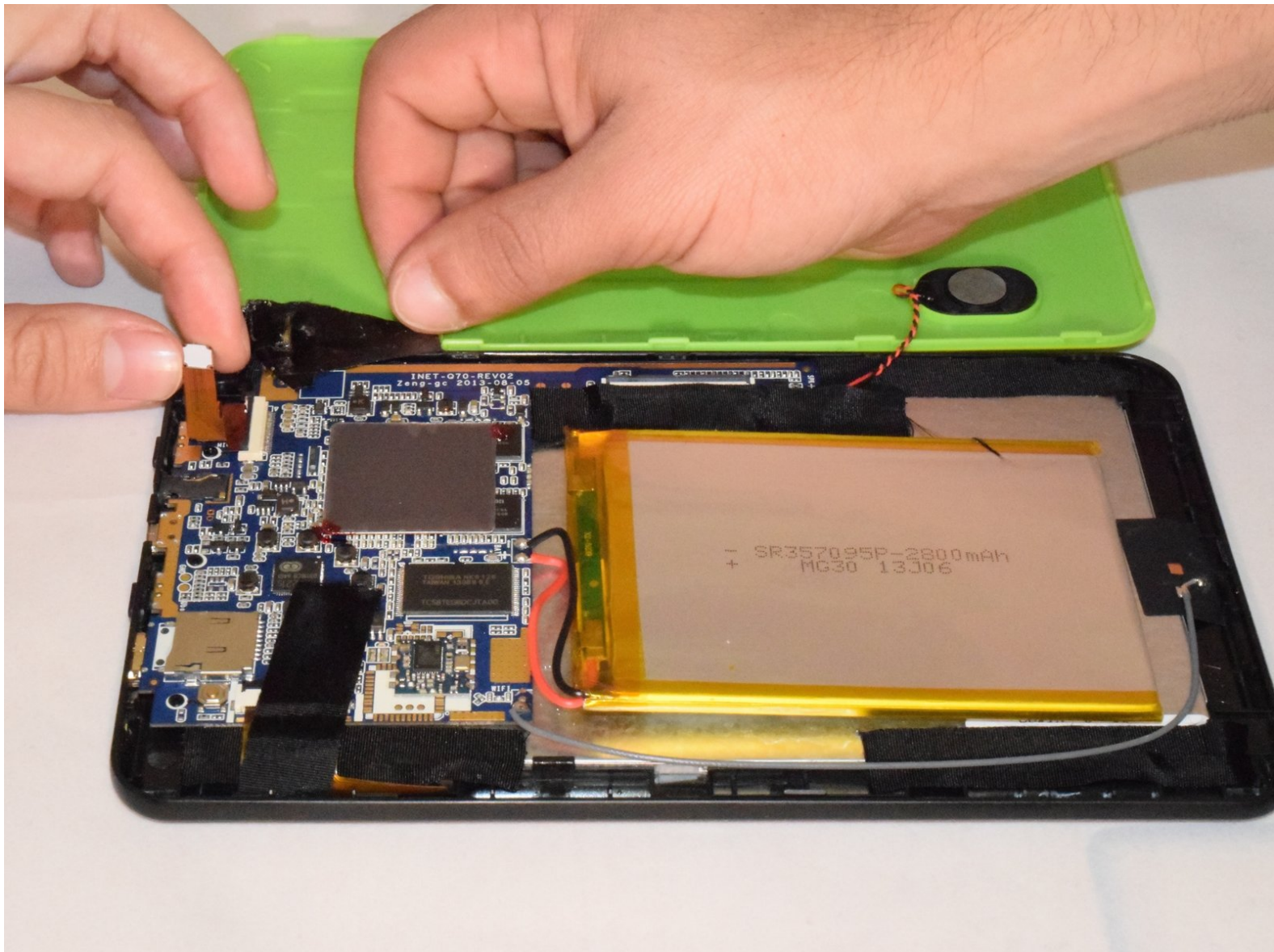




Ematic EGQ307 Front Facing Camera Replacement

This guide will show you how to replace the front facing camera on your tablet.

Written By: Jonathan Scinto



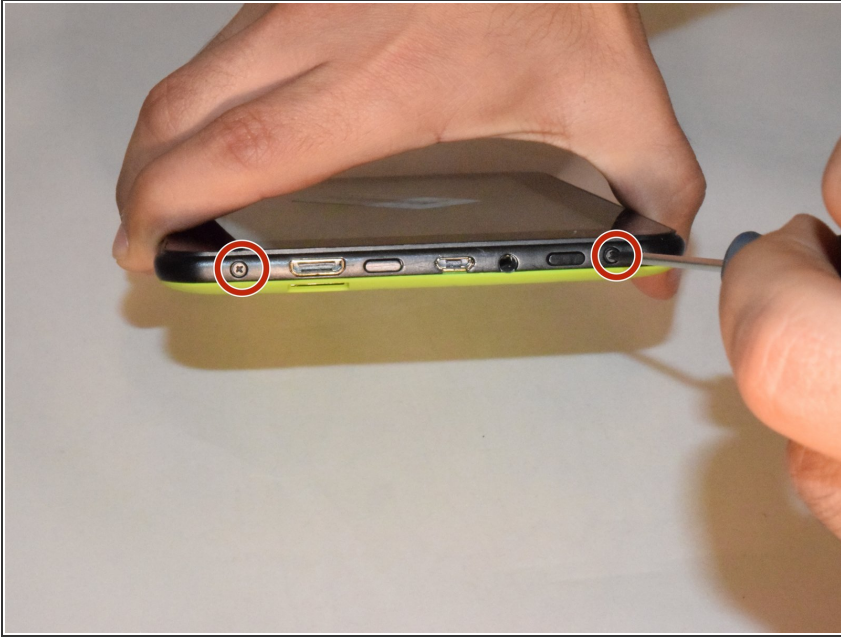
INTRODUCTION

If your front facing camera is no longer working or if your camera lens is cracked then you may need to replace it, this guide will teach you exactly how to replace your tablet's front facing camera.

TOOLS:

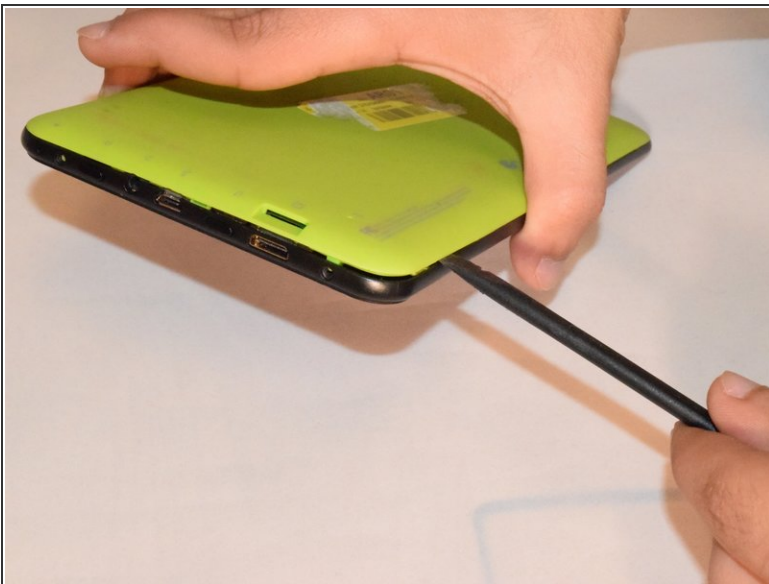
- [Spudger](#) (1)
 - [Phillips #0 Screwdriver](#) (1)
 - [iFixit Opening Tools](#) (1)
-

Step 1 — Front Facing Camera



- There are two screws on the side with the micro USB power port. Remove the two 2mm x 0.5mm screws with a Phillips #0 Screwdriver head.

Step 2



- Pry off the plastic backing with the spudger and the plastic opening tools. Anything that can provide enough leverage and not conduct electricity will also work for this purpose.

⚠ Carefully separate the front and back plates because the wire that connects the speaker is connected to both the front and back plates.

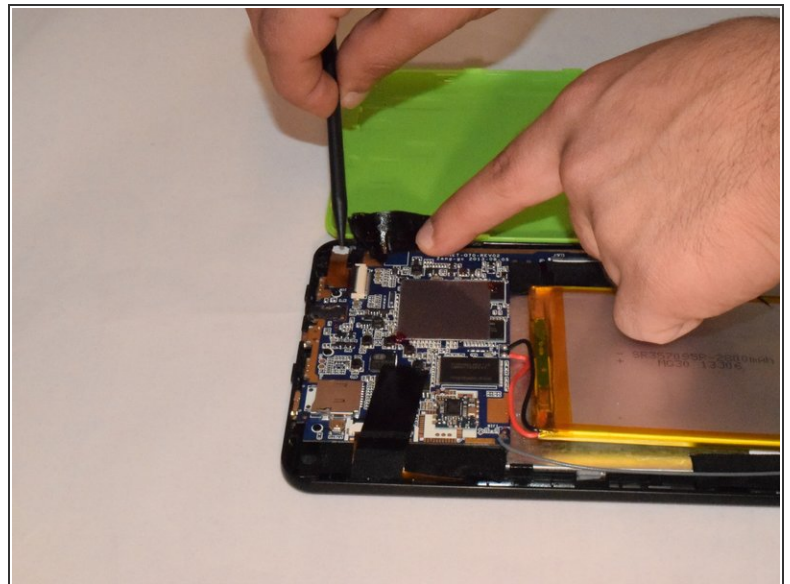
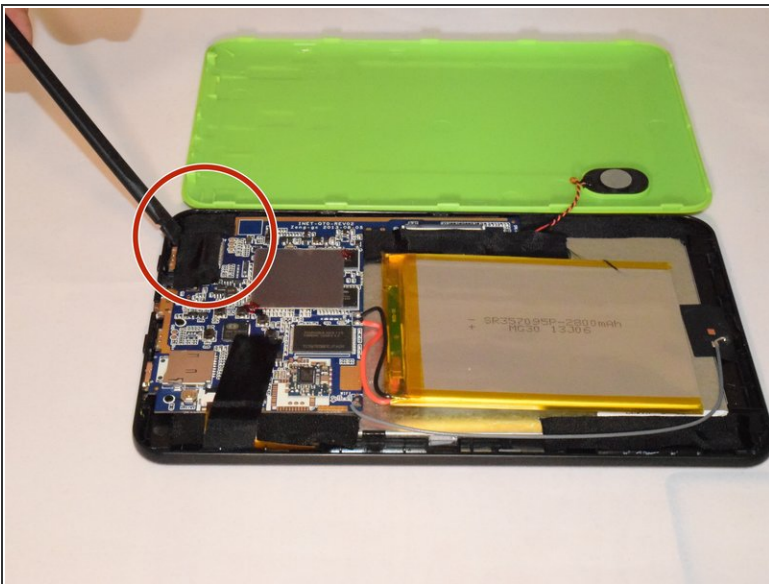
Step 3



- Once you pry off the plastic backing, you will expose the battery and the motherboard.

⚠ Carefully separate the front and back plates because the wire that connects the speaker is connected to both the front and back plates.

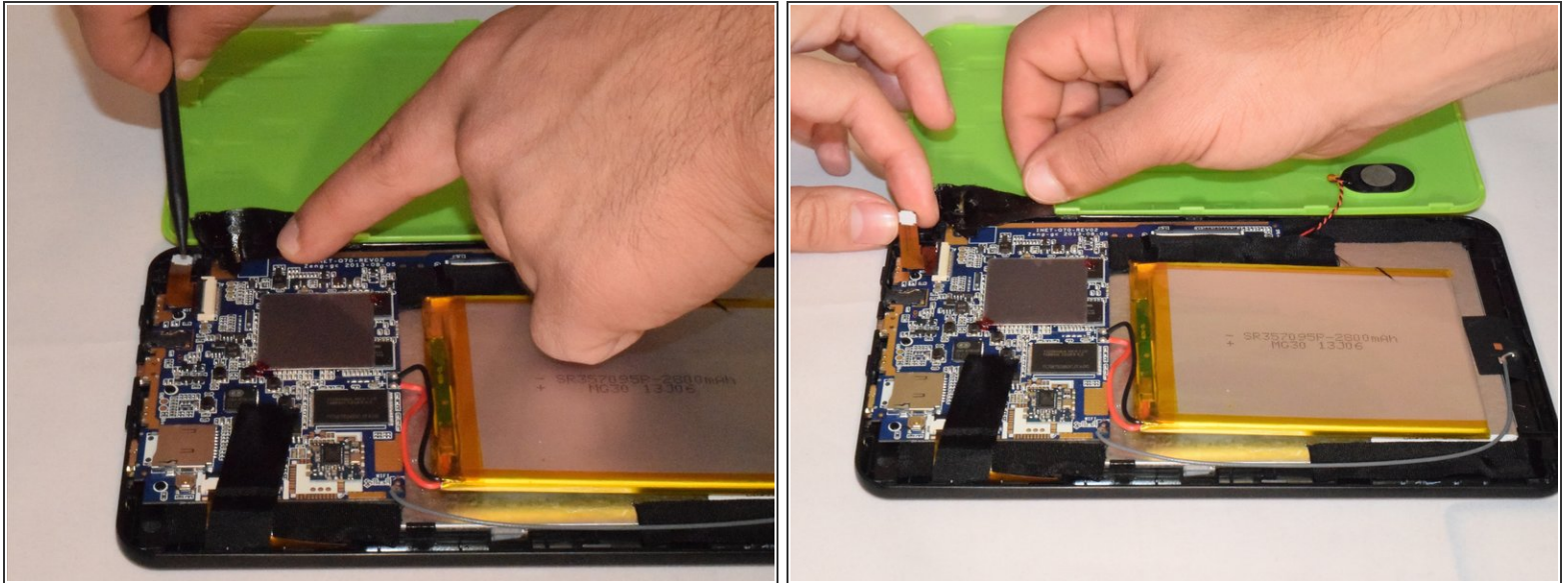
Step 4



- carefully pry off the plastic backing, remove the tape over the camera.

⚠ When working with device, make sure the battery is dead and there is not plugged in to the charger to limit the risk of shock.

Step 5



- Carefully remove the tape holding the camera in place as the camera is attached to the backing of the tape.
- Gently lift up the black lever that's holding the camera ribbon in place using the spudger tools.
- Once lever is lifted up, remove camera from device; and it is ready to be replaced.

To reassemble your device, follow these instructions in reverse order.