



Disassembling the Mobius ActionCam

The Mobius ActionCam is a small, durable video ...

Written By: Reed Danis



INTRODUCTION

The Mobius ActionCam is a small, durable video recorder often used as a helmet or dash camera.

The disassembly is very simple and individual components are easy to replace.



TOOLS:

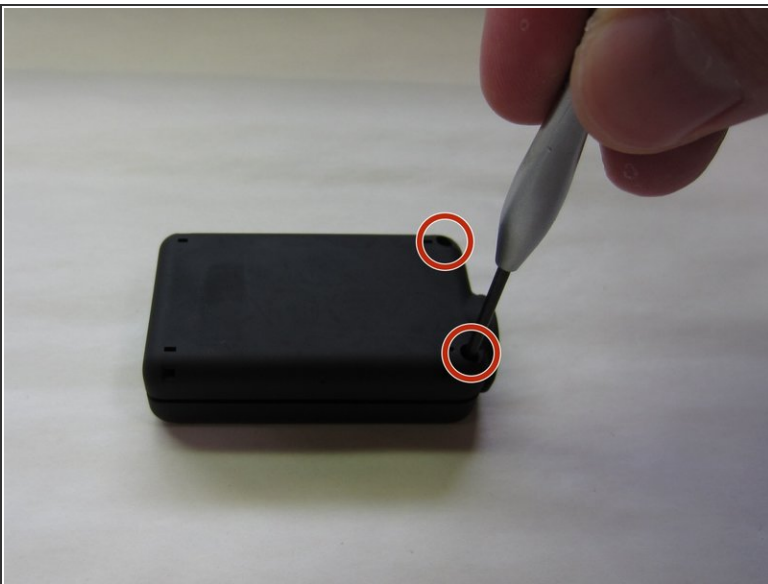
- [Small Needle Nose Pliers](#) (1)
 - [0.9mm Hex Key](#) (1)
 - [Phillips #00 Screwdriver](#) (1)
 - [Phillips #1 Screwdriver](#) (1)
 - [Utility Knife](#) (1)
-

Step 1 — Removing Exterior Peripherals



- Remove the lens cap.
- Remove the SD card by pressing down on the card until you hear a click, then releasing.

Step 2



- Use a Phillips #00 screwdriver to remove both screws on the bottom of the case.
- Use a box cutter or knife to split the quality control seal on the front of the device.
- ⓘ Be aware that breaking the seal will probably void any warranty.

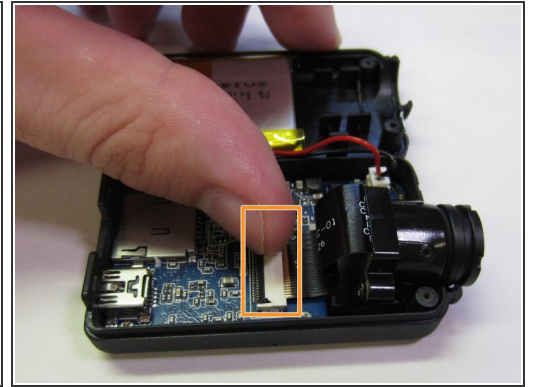
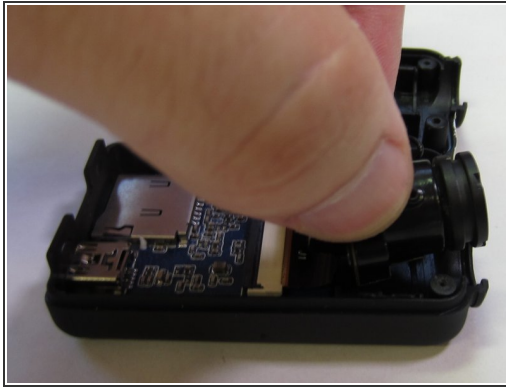
Step 3



- Pull the casing apart near the lens.
- Slide back the bottom half of the case to disengage the clips holding the casing halves together.
- Gently remove the bottom of the case and place it alongside the device.

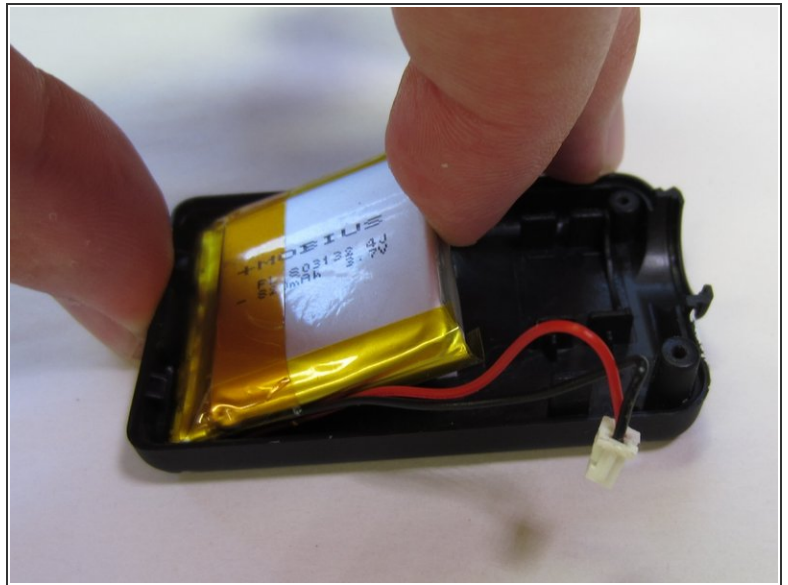
⚠ The battery pack is mounted to the bottom casing. Be gentle when opening the case to avoid damaging the harness that runs from the battery to the circuit board.

Step 4 — Removing the Camera Module



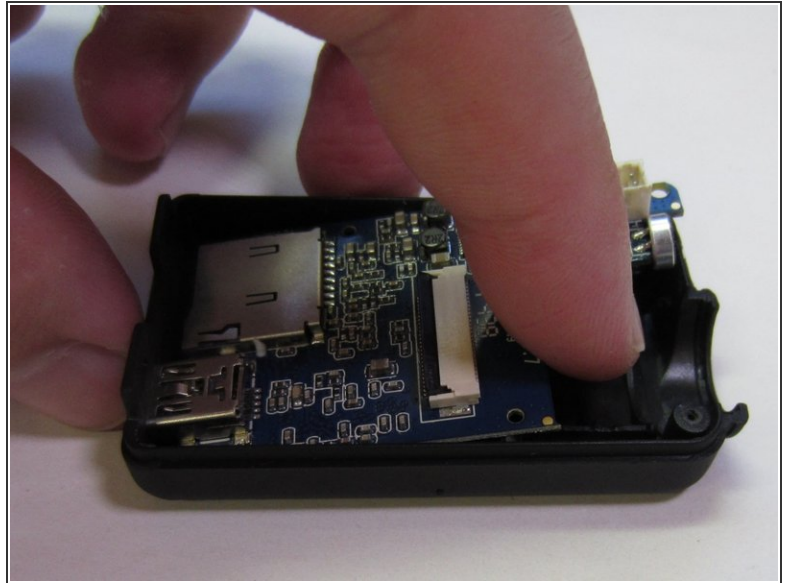
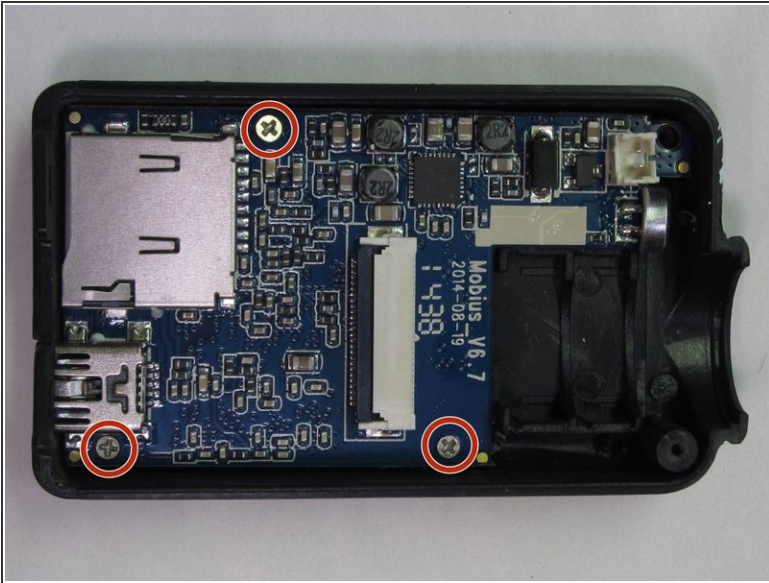
- Locate the camera module.
- Grab the sides of the camera module and gently pull upwards to free it from the case.
 - ⚠ Be gentle when handling the camera module to avoid damaging the fragile ribbon cable attached to it.
- Use your finger to pull up the black tab on the rear of the ribbon cable connector.
- Slide the ribbon cable out of the connector to remove the camera module.
- ☑ When plugging the ribbon cable back into the connector the copper pads face upwards.

Step 5



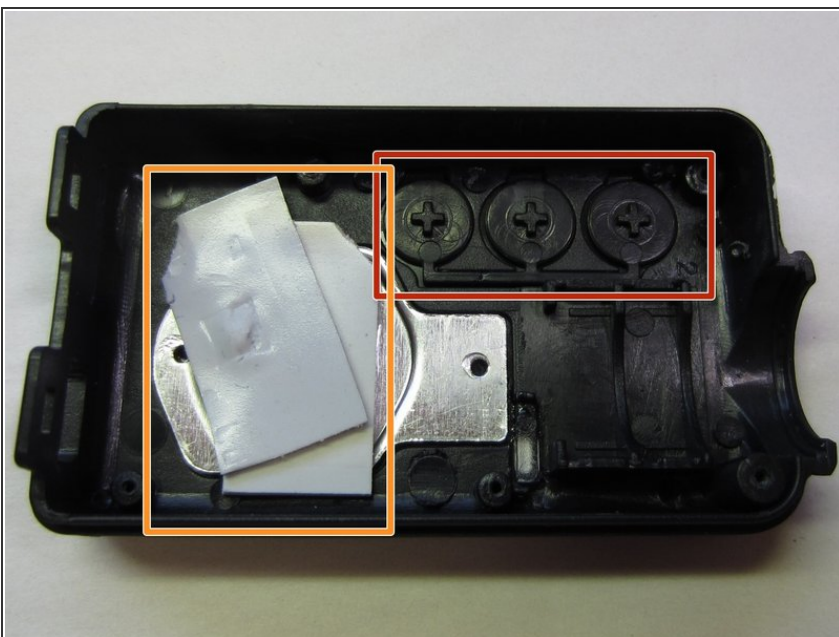
- Grab the battery plug with a pair of small needle nose pliers. Gently pull upwards to disengage the connectors.
- ⚠ Be gentle when removing the plug to avoid damaging the battery cable.
- ⓘ If the board mounted battery connector housing comes loose it can simply be pushed back on to the terminal pins.
- Lift up one end of the battery. **Slowly** pull the battery off the adhesive backing.

Step 6



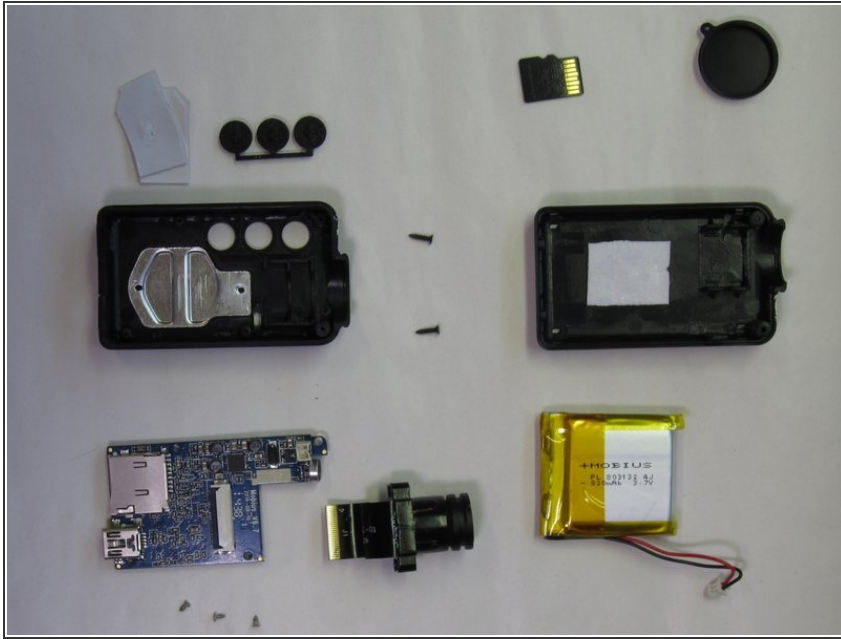
- Locate the 3 screws securing the circuit board to the casing.
- Use a Phillips #1 screwdriver to remove the screws.
- Lift the edge of the circuit board up. Slide the circuit board out of the casing.

Step 7



- Remove the interface buttons from the top of the case.
- Remove the circuit board backing material.

Step 8



- The Mobius is now disassembled into its major components.

To reassemble your device, follow these instructions in reverse order.