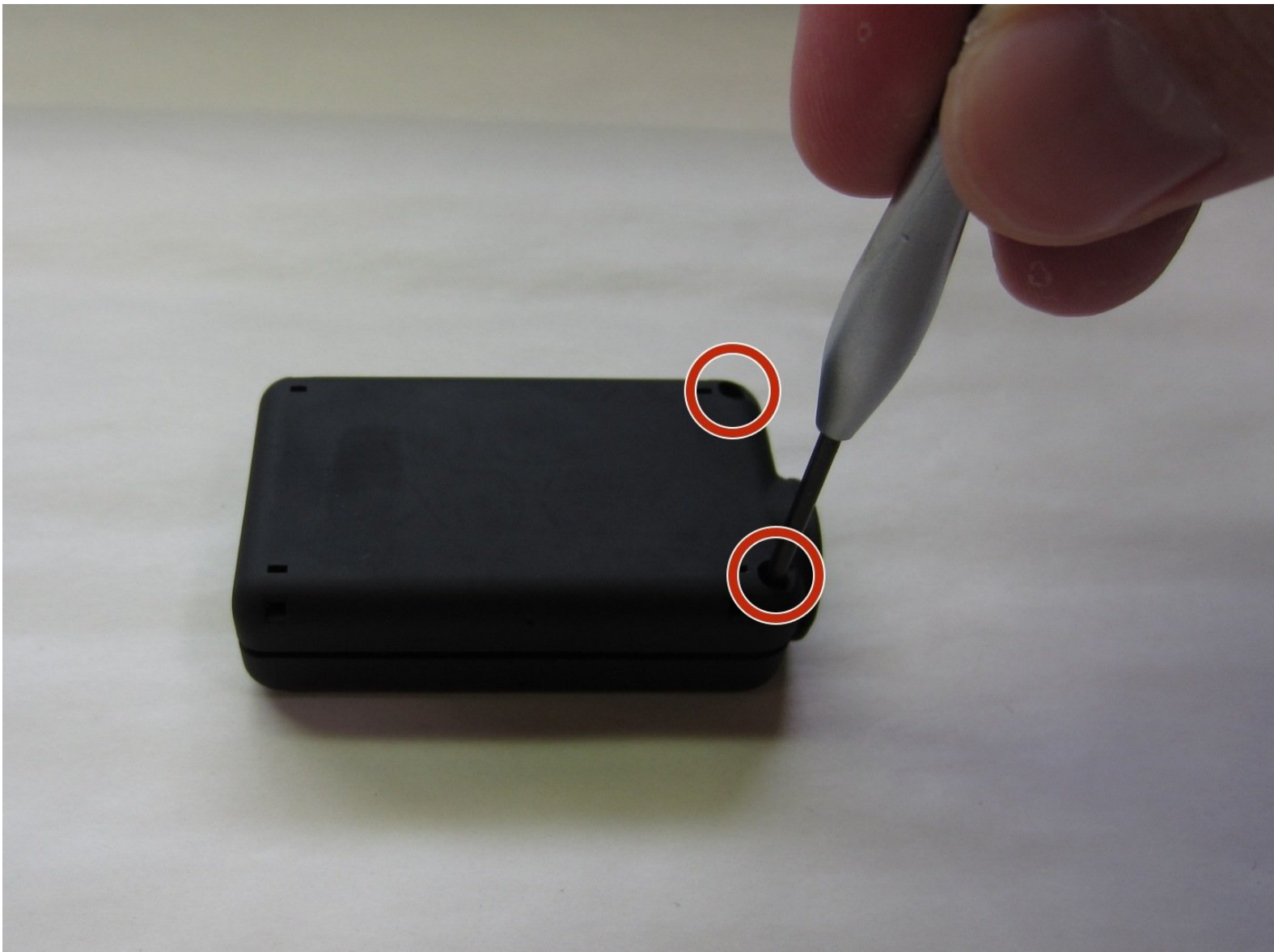




How to Adjust the Mobius ActionCam Camera Focus

The Mobius ActionCam is a small, durable video...

Written By: Reed Danis



INTRODUCTION

The Mobius ActionCam is a small, durable video recorder often used as a helmet or dash camera. In its default factory configuration objects must be a minimum of several feet from the camera to be in reasonable focus. However, the lens can be manually adjusted to focus on objects up to approximately 4" away, allowing the device to be used for macro photography projects.



TOOLS:

- [Phillips #00 Screwdriver](#) (1)

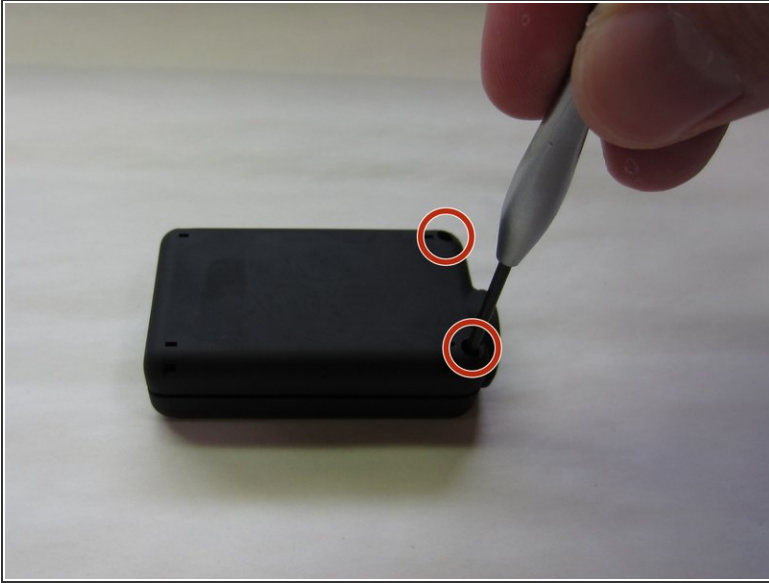
A screwdriver with a long, thin shank is required

- [0.9mm Hex Key](#) (1)

An appropriate key comes with the camera

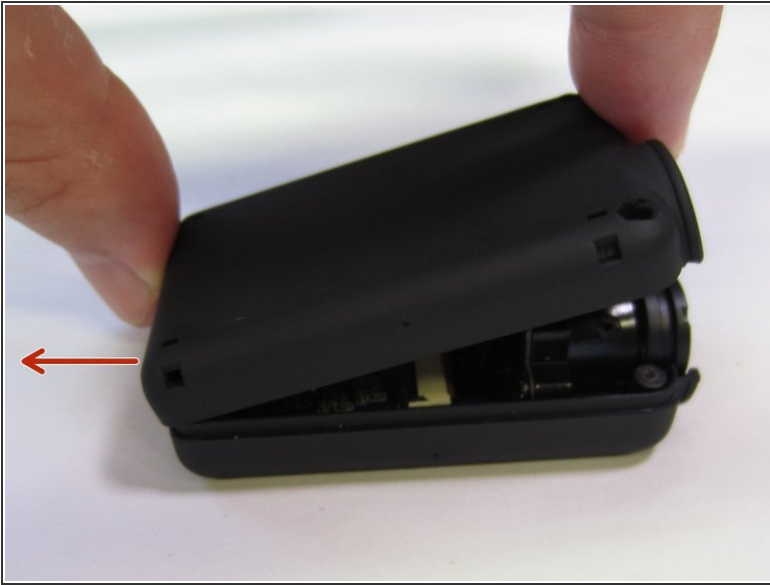
- [Utility Knife](#) (1)
-

Step 1 — How to Adjust the Mobius ActionCam Camera Focus



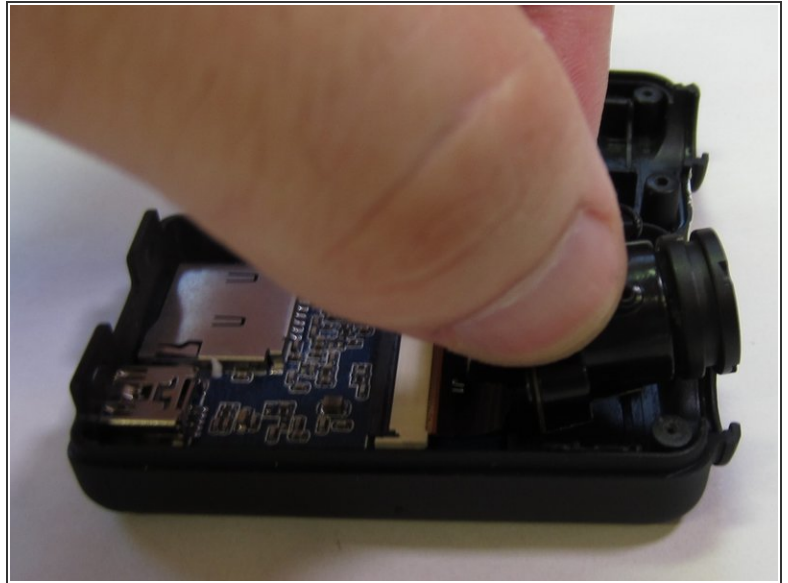
- Use a Phillips #00 screwdriver to remove both screws on the bottom of the case.
- Use a box cutter or knife to split the quality control seal on the front of the device.
- ⓘ Be aware that breaking the seal will probably void any warranty.

Step 2



- Pull the casing apart near the lens.
 - Slide back the bottom half of the case to disengage the clips holding the casing halves together.
 - Gently remove the bottom of the case and place it alongside the device.
- ⚠ The battery pack is mounted to the bottom casing. Be gentle when opening the case to avoid damaging the harness that runs from the battery to the circuit board.**

Step 3



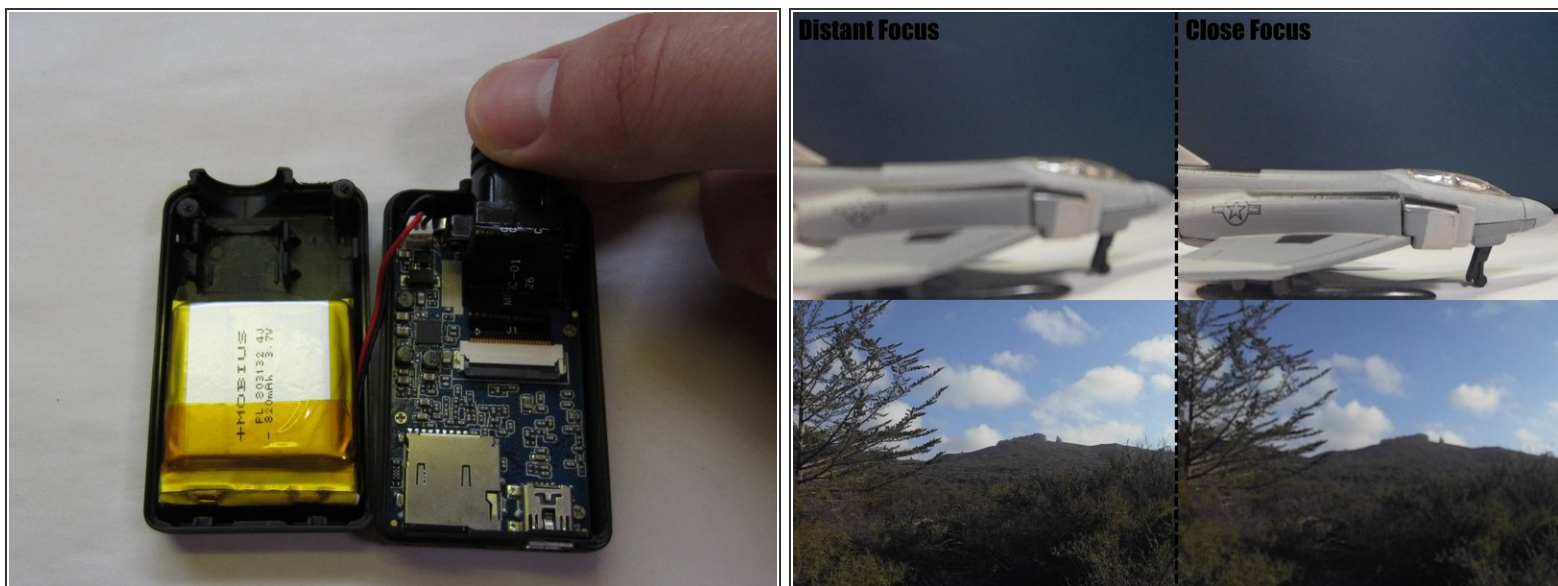
- Locate the camera module.
 - Grab the sides of the camera module and gently pull to free it from the case.
- ⚠ Be gentle when handling the camera module to avoid damaging the fragile ribbon cable attached to it.

Step 4



- Use a 0.9mm hex key or driver to loosen the set screw fastened into the side of the camera module.
- ⓘ Loosen the screw until it turns freely. Do not fully remove the set screw.

Step 5



- Grab the side of the lens and gently turn to adjust the focus.
- ⓘ While facing the back of the camera module, turning the lens all the way clockwise will bring objects 4"-6" away into focus. Turning the lens all the way counterclockwise will bring distant objects into focus.
- ⓘ The lens has about a half turn of travel.

To reassemble your device, follow these instructions in reverse order.