



Retina MacBook 2015 Left Speaker Replacement

Replace the left speaker on your Retina MacBook...

Written By: Geoff Wacker



INTRODUCTION

Replace the left speaker on your Retina MacBook 2015. Part of the wireless antenna is also integrated into the speaker. Use this guide to replace both the speaker and antenna as a single unit.

To avoid logic board damage, when your MacBook repair is complete *but before powering it on*, [connect it to low-voltage power](#) using a 5-Watt iPhone charger and a USB-C to USB-A cable. These accessories are not included with your MacBook, so make sure you have them ready before you begin.

TOOLS:


[Phillips #00 Screwdriver](#) (1)
[Battery Blocker](#) (1)
[P5 Pentalobe Screwdriver MacBook Pro Retina and Air](#) (1)
[Spudger](#) (1)
[T5 Torx Screwdriver](#) (1)
[Precision Tweezers](#) (1)
[iFixit Opening Tool](#) (1)
[iOpener](#) (1)
[Tri-point Y00 Screwdriver](#) (1)

PARTS:

[MacBook 12" Retina \(Early 2015-2017\) Left Speaker](#) (1)
[MacBook 12" Retina \(Early 2015-2017\) Lower Case Screw Set](#) (1)
[USB-C to USB-A 2.0 Cable](#) (1)
[USB Power Adapter for iPhone and iPod](#) (1)

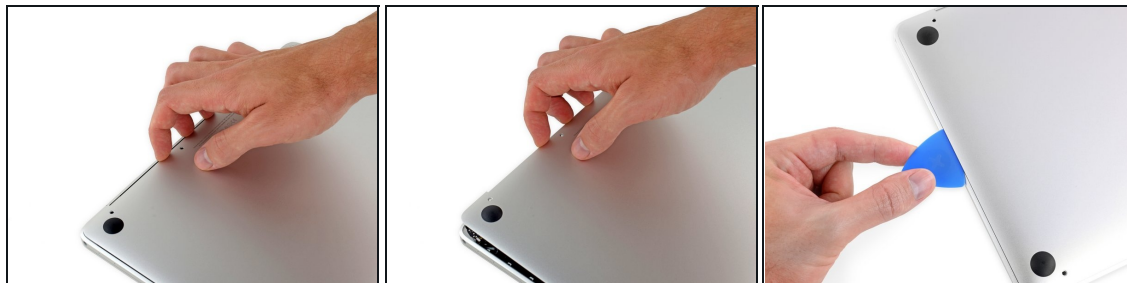
Step 1 — Unfasten the lower case



 Before proceeding, unplug and power down your MacBook. Close the display and flip it upside-down.

- Remove the following eight screws securing the lower case:
 - Two 1.8 mm P5 Pentalobe screws
 - Four 2.9 mm P5 Pentalobe screws
 - Two 6.1 mm P5 Pentalobe screws
- ✦ Note the orientation of the screws as you remove them—they need to be reinstalled at a slight angle.
- ✦ Throughout this repair, [keep track of each screw](#) and make sure it goes back exactly where it came from to avoid damaging your device.

Step 2



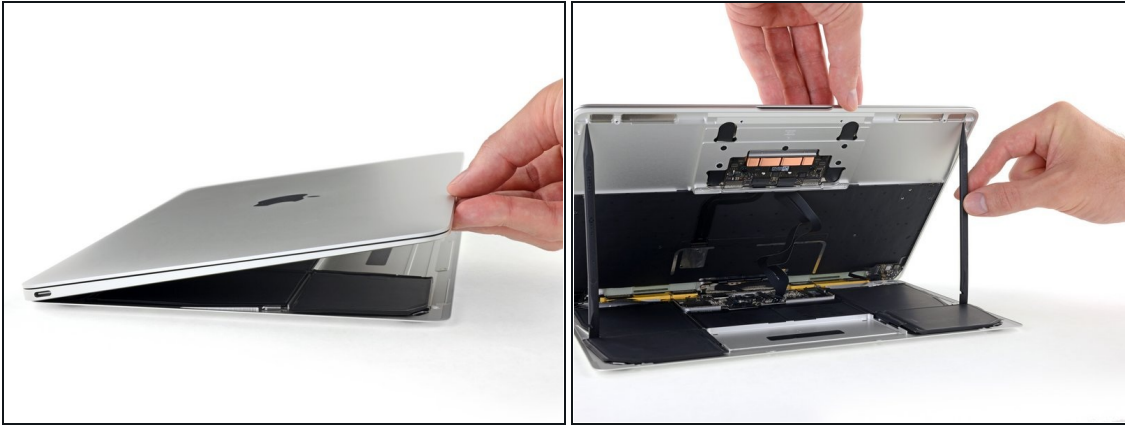
- Wedge your fingers between the upper case and the lower case, starting from the rear of the MacBook between the hinges.
- ⚠ Lift the lower case only slightly to avoid damaging the cables that connect the lower case to the upper case.
- Keeping a firm grip, lift steadily until the lower case separates slightly from the upper case.
- ⓘ You may experience a lot of resistance when lifting the lower case. If necessary, slide an opening pick or other ESD-safe pry tool down the side edges of the lower case to pop the two hidden retaining clips free.
- ✦ During reassembly, to re-engage the clips, press firmly near both side edges of the lower case (near where the pick is inserted in the third image) until you hear the clips snap into place.

Step 3



- While holding the lower case in place, carefully flip the MacBook over so the Apple logo faces up.

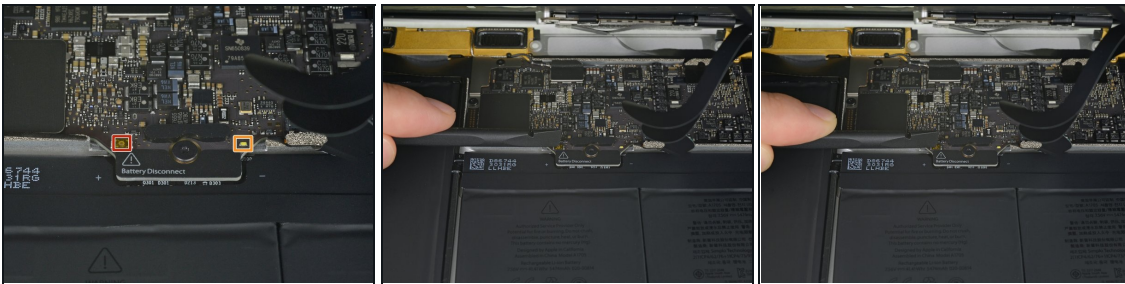
Step 4




- Lift the upper case and display together from the front edge and raise it to about a 45° angle.

 It may be helpful to prop the MacBook open in this position for the next step.

Step 5



- Use the flat end of a spudger to press and hold the small gold 'battery disconnect' button.
 - If the power LED is lit up, continue holding the button until the LED goes dark, and then release. This may take up to 10 seconds.
- If the LED does not light, release the button after 5-10 seconds. Press and hold it again for 5-10 seconds, and release. Finally, press and hold it a third time for 5-10 seconds, and release.

 This step ensures the MacBook is fully powered down and safe to work on.

Step 6



- Close the MacBook and carefully flip it upside-down.

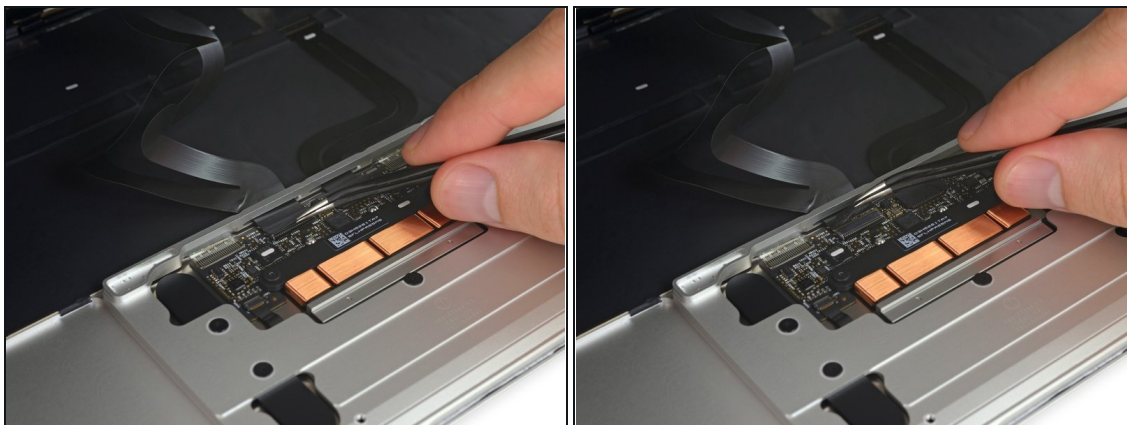
Step 7



- Lifting from the front edge, open the lower case to an angle of about 45°.

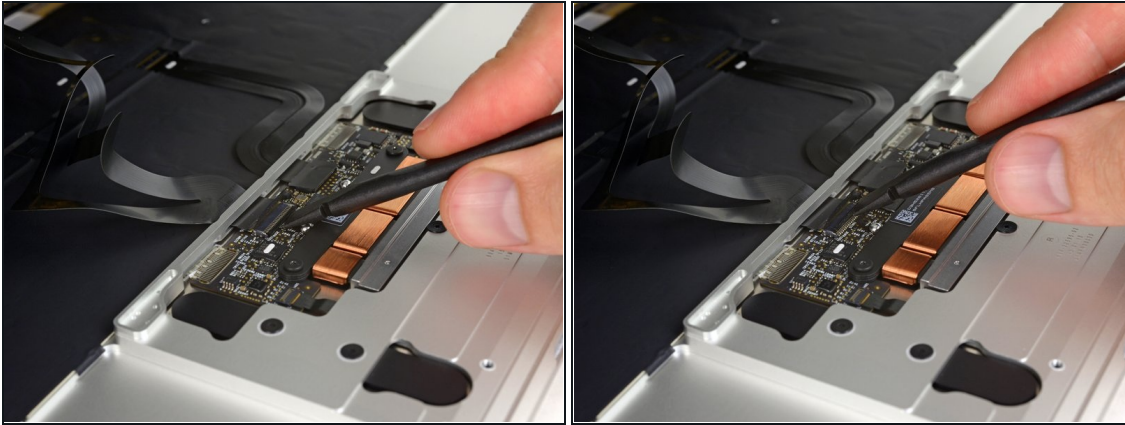
⚠ Take care not to damage the ribbon cables that still attach the lower case to the MacBook.

Step 8



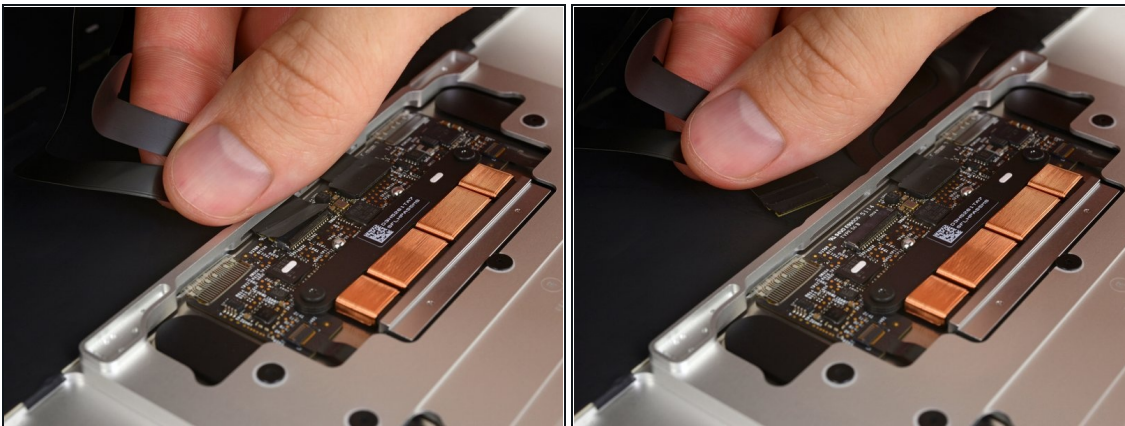
- Use tweezers to peel back the tape covering the trackpad cable ZIF connector.

Step 9



- Use a spudger to carefully flip up the retaining flap on the trackpad cable ZIF connector.

Step 10



- Disconnect the trackpad ribbon cable from the trackpad by pulling it gently through its slot in the frame.

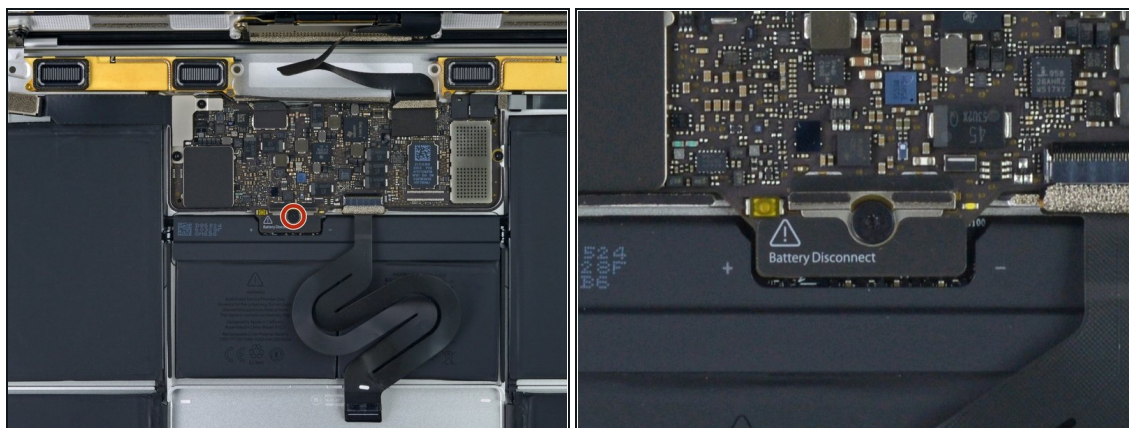
Step 11



- Carefully turn the MacBook over, so that the lower case lays flat.
- Raise the upper case/display assembly to about a 90° angle, and prop it up against something sturdy so you don't have to hold it.
- Add a piece of tape near the track pad to secure the upper case and prevent accidental movement.

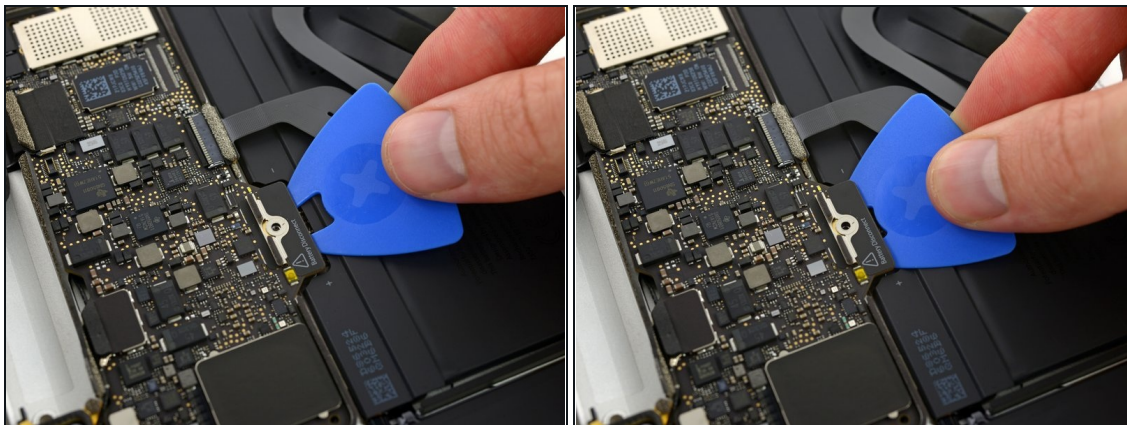
⚠ It's possible to open the MacBook all the way and lay both sides down flat, but this may damage the flex cables and is not recommended.

Step 12



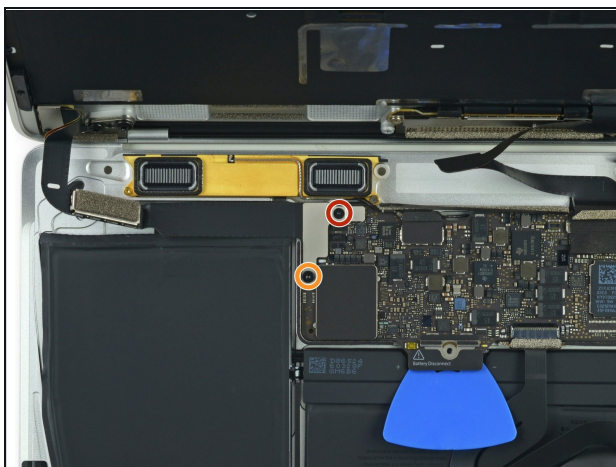
- Remove the single 2.9 mm T5 Torx screw securing the battery connector to the logic board.
- ☞ 2015 models have a silver grounding clip with two foam pads directly under this screw, which may come loose. Be sure to reinstall it during reassembly.

Step 13



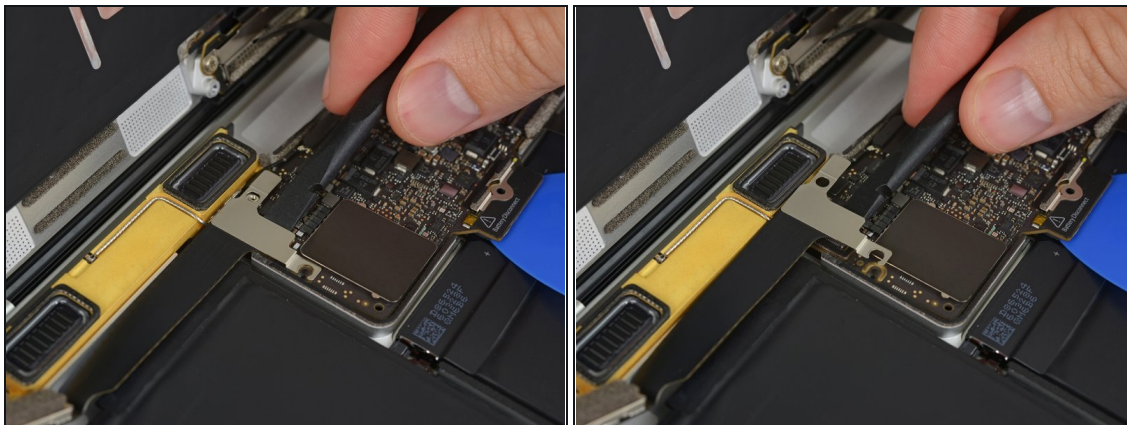
- As an added precaution, you may physically disconnect the battery by inserting a [battery isolation pick](#) between the logic board and the battery connector.

Step 14



- Remove the two screws securing the USB-C port cable bracket:
 - 1.1 mm Tri-point Y00 screw
 - ⓘ Some variations of this model may use a Phillips #00 screw.
 - 3.5 mm T5 Torx screw

Step 15



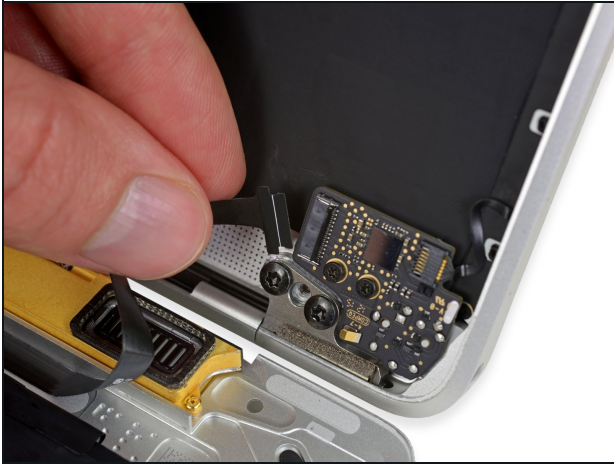
- Use the flat end of a spudger to disconnect the USB-C port cable bracket by prying it straight up from the logic board.
- ✦ To reconnect this cable, first line up the metal bracket over the screw holes, then press down on the middle of the bracket. Make sure it's aligned correctly, or you may damage the connector.

Step 16



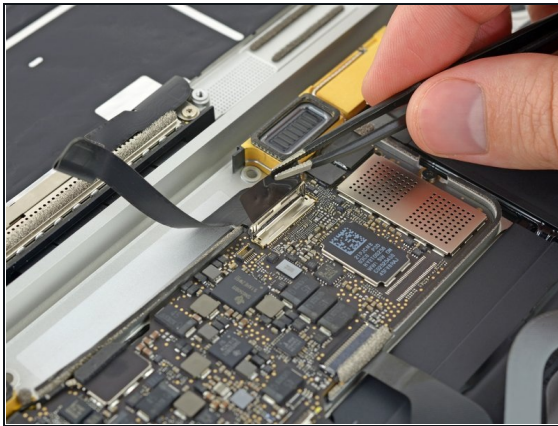
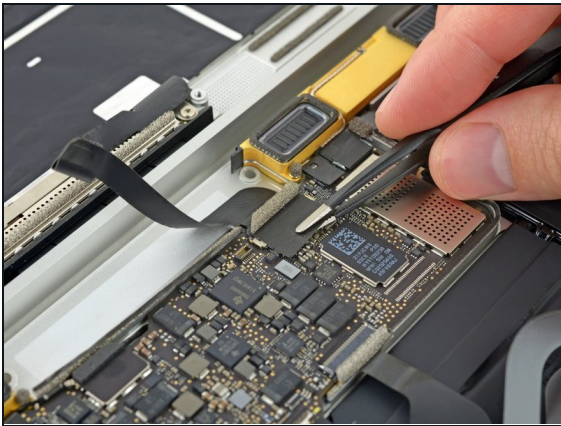
- Use a spudger to flip open the retaining flap on the audio jack board cable ZIF connector.

Step 17



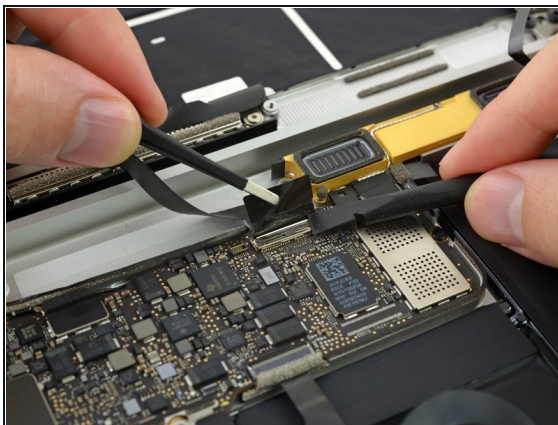
- Disconnect the audio jack board ribbon cable by pulling it straight back out of the ZIF connector.
- ✦ During reassembly, orient the ribbon cable so that the side with the white stripe faces you, as shown.

Step 18 — Retina MacBook 2015 Lower Case Assembly Removal



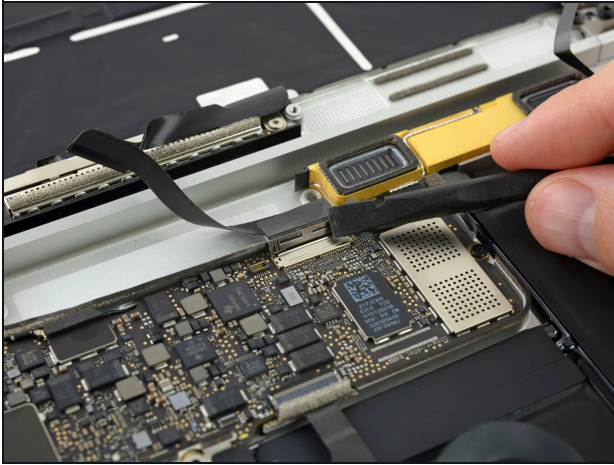
- Use tweezers to peel back the tape covering the display cable connector.

Step 19



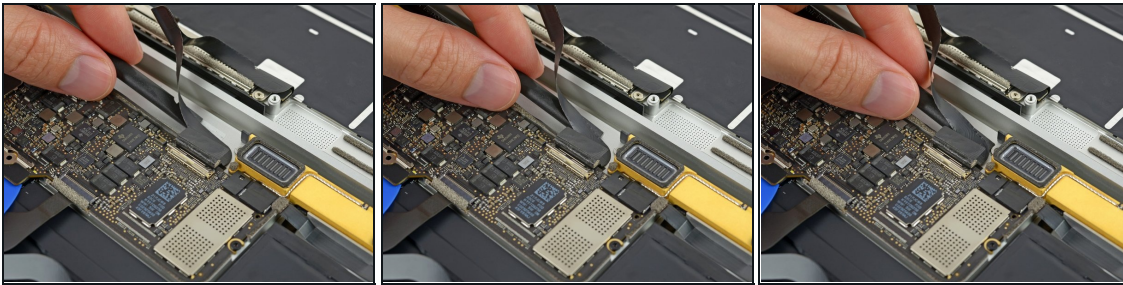
- ⓘ It's possible the metal retaining flap on the display cable connector may flip open, remaining stuck to the tape.
 - If so, use the flat end of a spudger to hold down the retaining flap while peeling the tape away with the tweezers.

Step 20



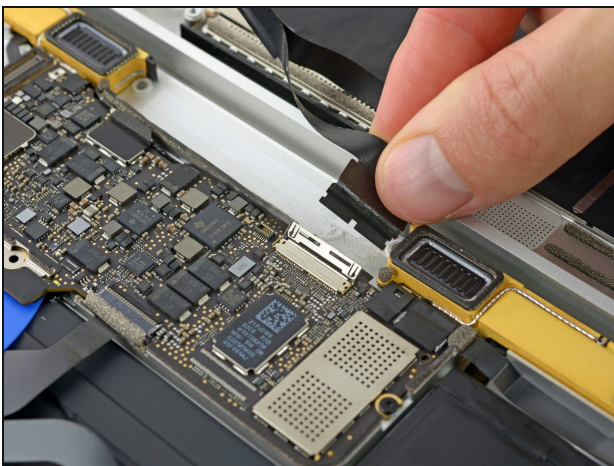
- Use the flat end of a spudger to flip open the retaining flap on the display cable connector.
- Try to keep it clear of the tape, or it may re-adhere and make cable removal difficult.

Step 21



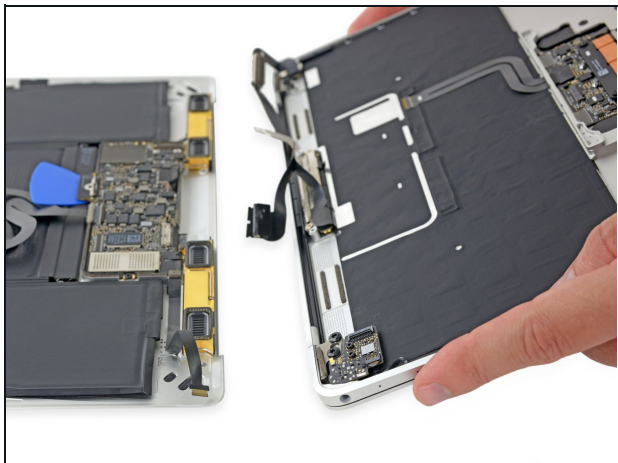
- Carefully slide the flat end of a spudger underneath the display cable to separate the adhesive holding it to the lower case.
⚠ Take care not to damage the cable. If it doesn't separate easily, heat the cable and/or the case directly beneath it with a hair dryer or [iOpener](#) to soften the adhesive, and try again.

Step 22



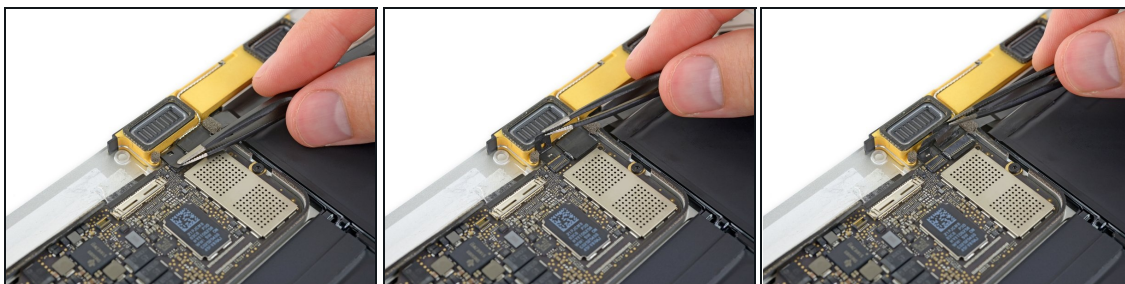
- Disconnect the display cable by gently pulling it straight out of its connector.
⚠ Immediately close the retaining flap.
★ The flap must remain **closed** when the cable is reinserted during reassembly. Carefully line up the cable with the gold contacts facing down, and gently slide it into the connector. Take care not to crimp or damage the cable. When fully inserted, the indentations on the sides should not be visible.

Step 23



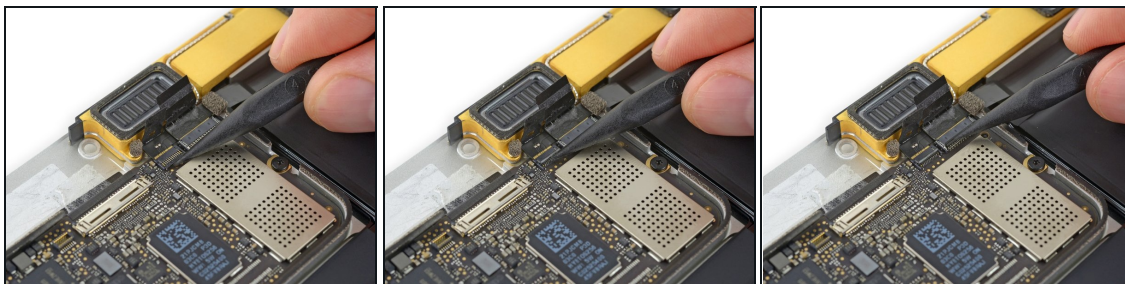
- Separate the upper case assembly from the lower case assembly.

Step 24 — Logic Board



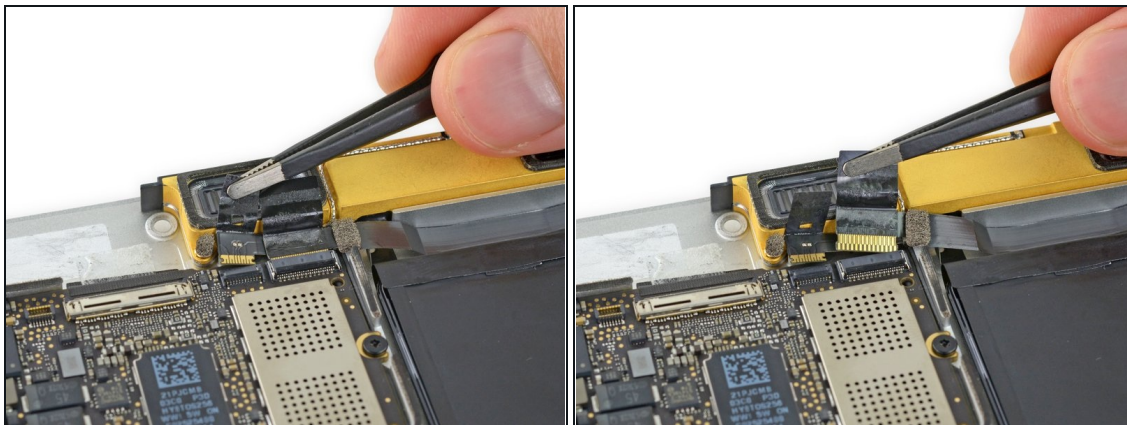
- Use tweezers to peel up the tape covering the two ZIF connectors—one for the right speaker cable, and one for the audio jack board cable.

Step 25



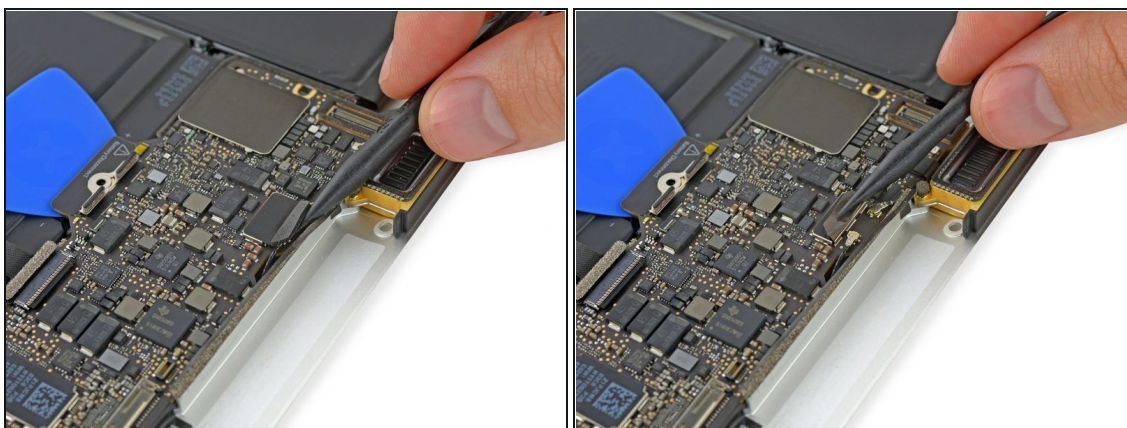
- Use the point of a spudger to flip up both ZIF connector retaining flaps.

Step 26



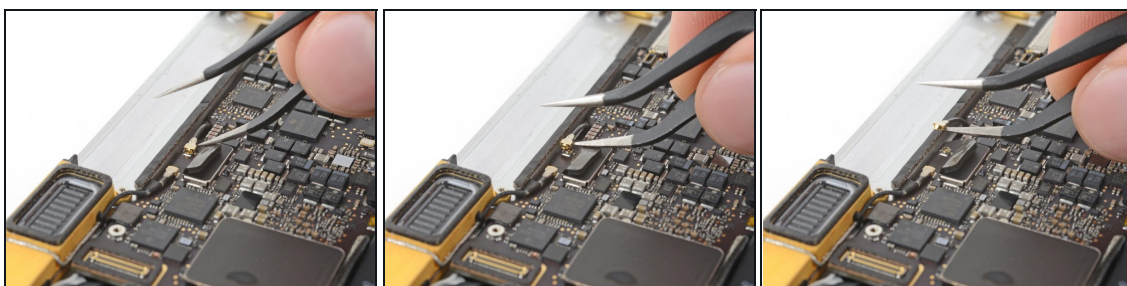
- Carefully pull straight back on the two pieces of tape you just peeled up to disconnect the two ribbon cables.

Step 27



- Use the point of a spudger to peel up the foam pad covering the two antenna connectors.

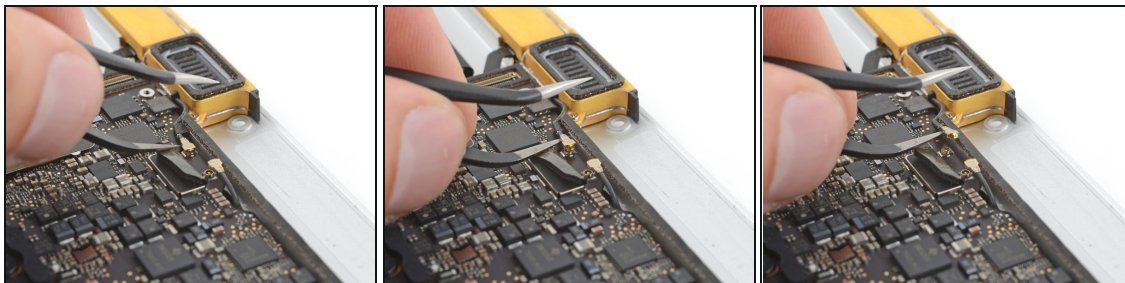
Step 28



- Insert one arm of your angled tweezers under the metal neck of the first antenna connector and pry up to disconnect it.

⚠ The antenna connectors and sockets are extremely fragile. Be very careful to lift only on the connector, and not on the socket itself. Do not lift under the cable, or put any unnecessary strain on it.

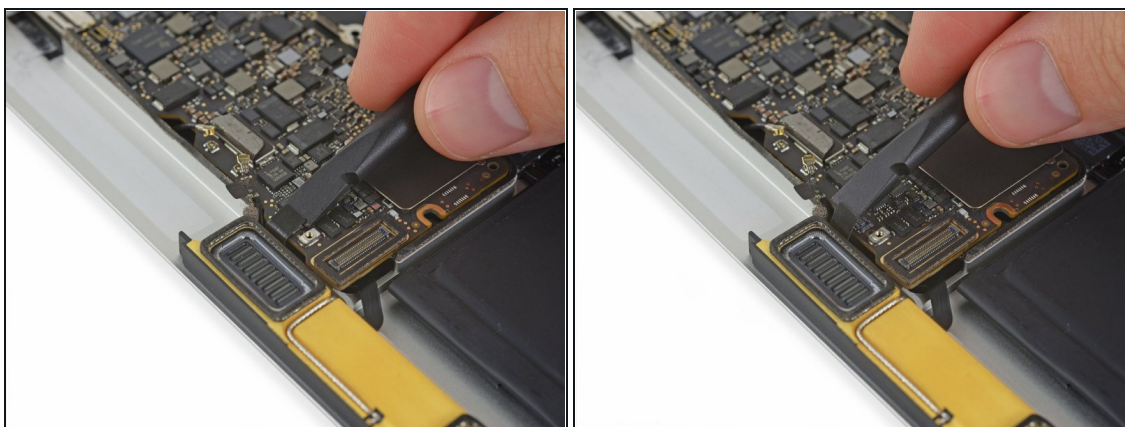
Step 29



- Pry up the second antenna connector to disconnect it.

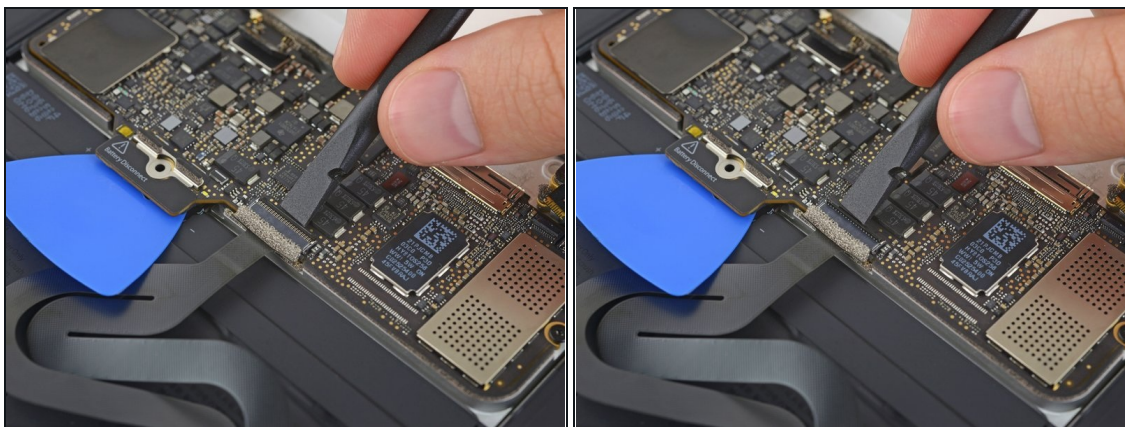
⚠ The antenna connectors and sockets are extremely fragile. Be very careful to lift only on the connector, and not on the socket itself. Do not lift under the cable, or put any unnecessary strain on it.

Step 30



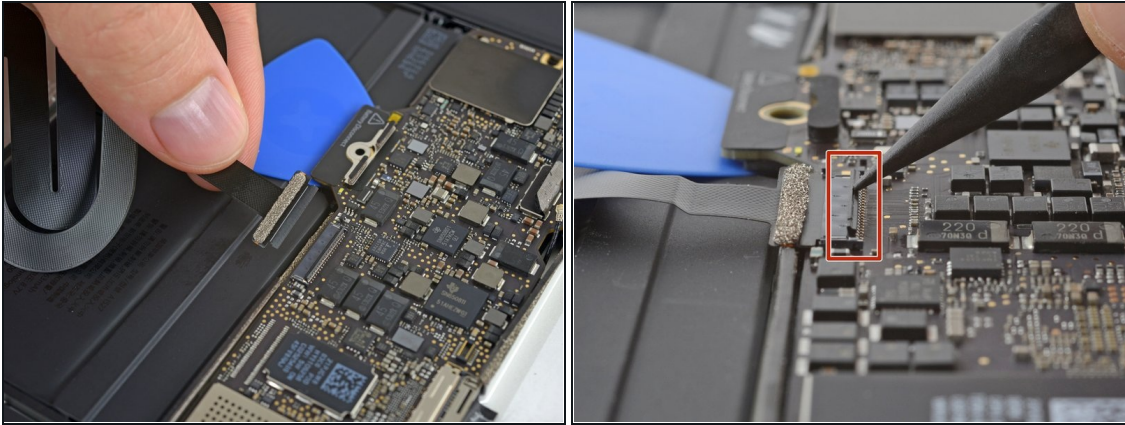
- Use a spudger to disconnect the left speaker cable connector by prying it straight up from the logic board.

Step 31



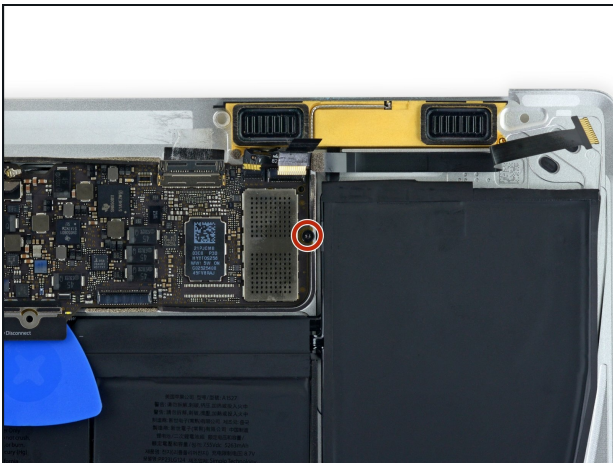
- Use a spudger to flip up the retaining flap on the trackpad cable ZIF connector.

Step 32



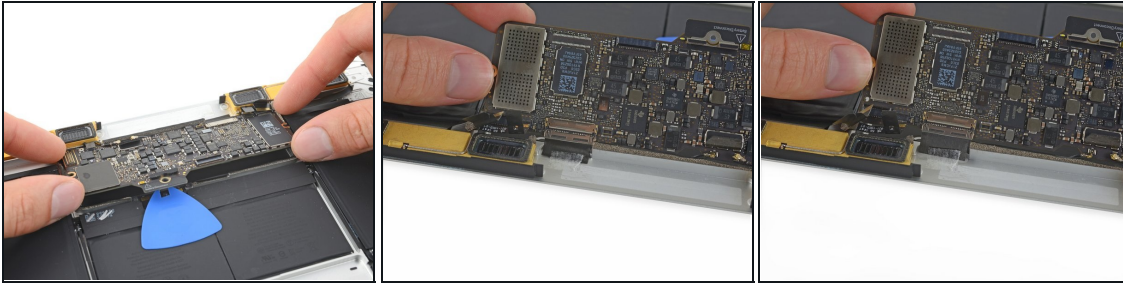
- Disconnect the trackpad cable from the logic board by gently pulling it straight out of its connector.
- ☑ During reassembly, check that your ZIF connector flaps are flipped up before reinserting their cables.

Step 33



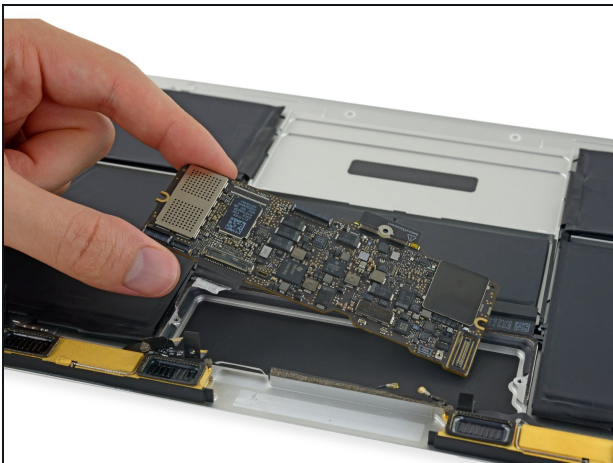
- Remove the single 3.5 mm T5 Torx screw securing the logic board to the lower case.

Step 34



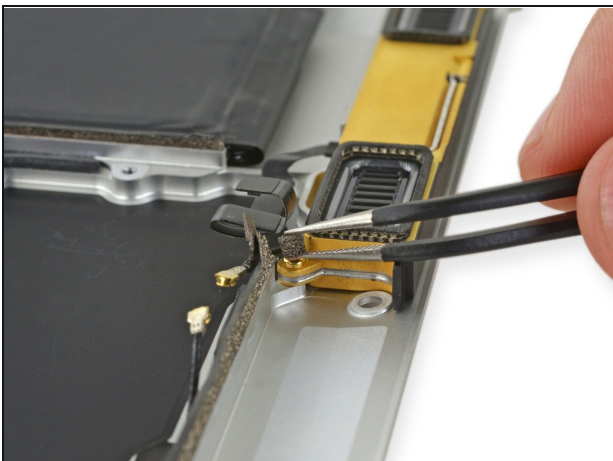
- Flip up the front edge of the logic board.
 - ⚠ Handle the logic board only by its edges.
- Lift and detach the EMI tape securing the logic board to the lower case.
 - ℹ If the tape feels stuck, [heat it with a hair dryer](#) or iOpener to soften the adhesive.
 - ✳ Reattach the tape securely during reassembly.

Step 35



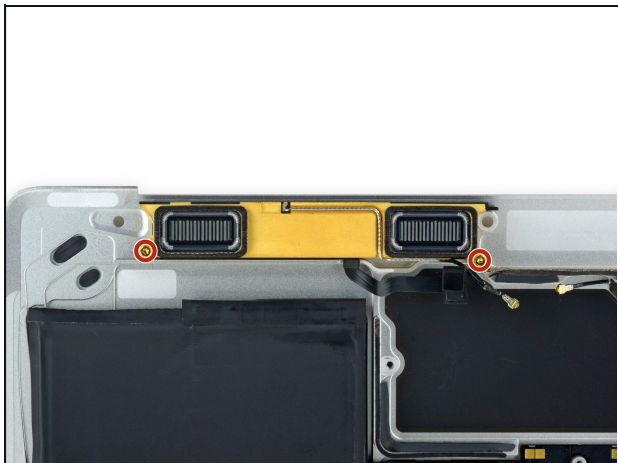
- Remove the logic board.

Step 36 — Left Speaker



- Using tweezers, remove the foam pad covering the screw on the right side of the left speaker.
 - ⚠ If you pull on the foam portion, it will tear. Try to get your tweezers under the adhesive pad holding the foam to the top of the screw.

Step 37



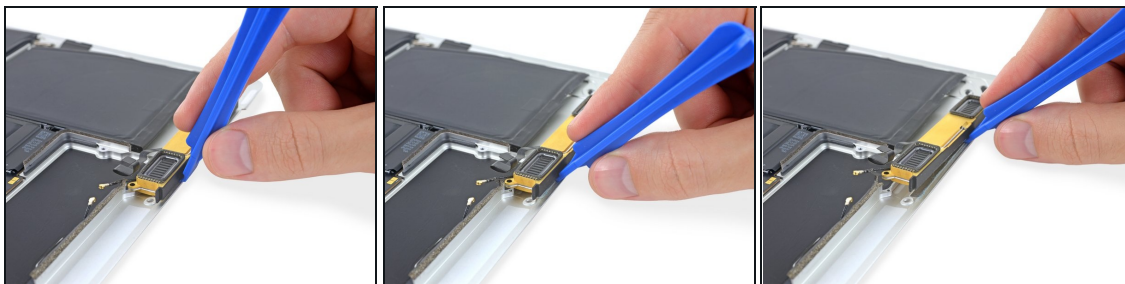
- Remove the two 4.1 mm T3 Torx screws securing the left speaker to the lower case.

Step 38



- [Prepare an iOpener](#) and heat the lower case directly beneath the left speaker, in order to soften up the adhesive securing the speaker.

Step 39



- Use a plastic opening tool to pry under the top edge of the left speaker, and separate it from the lower case.

Step 40



- Remove the left speaker assembly.

To reassemble your device, follow these instructions in reverse order. To avoid logic board damage, when your MacBook repair is complete *but before powering it on*, [connect it to low-voltage power](#) using a 5-Watt iPhone charger and a USB-C to USB-A cable.