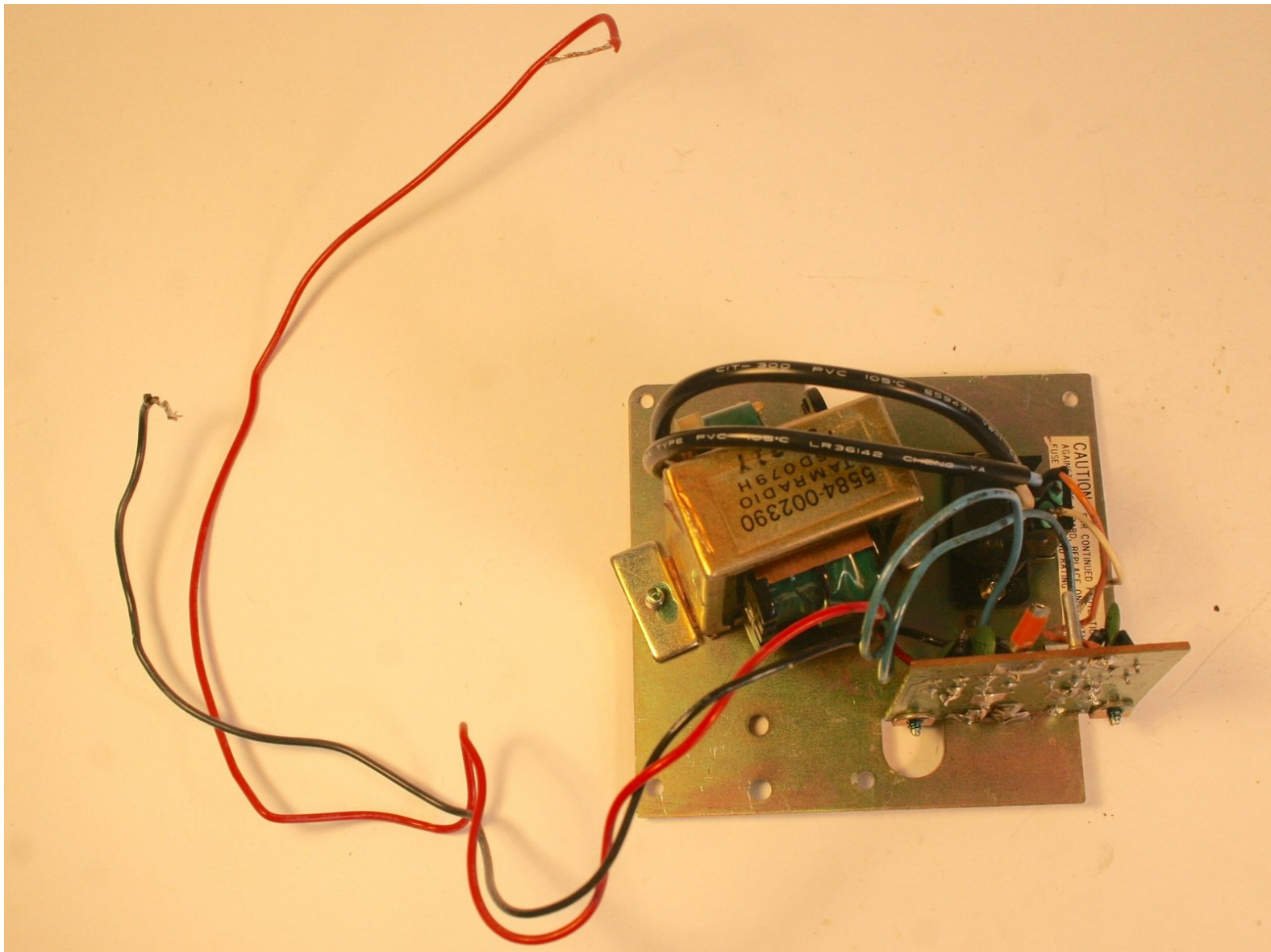




Montgomery Ward GEN-39500 Internal Power Supply Replacement

Written By: Dustin Platt



INTRODUCTION

This is a guide for replacing the internal power supply unit.



TOOLS:

- [Phillips #2 Screwdriver](#) (1)
 - [Soldering Iron](#) (1)
-

Step 1 — Back Cover



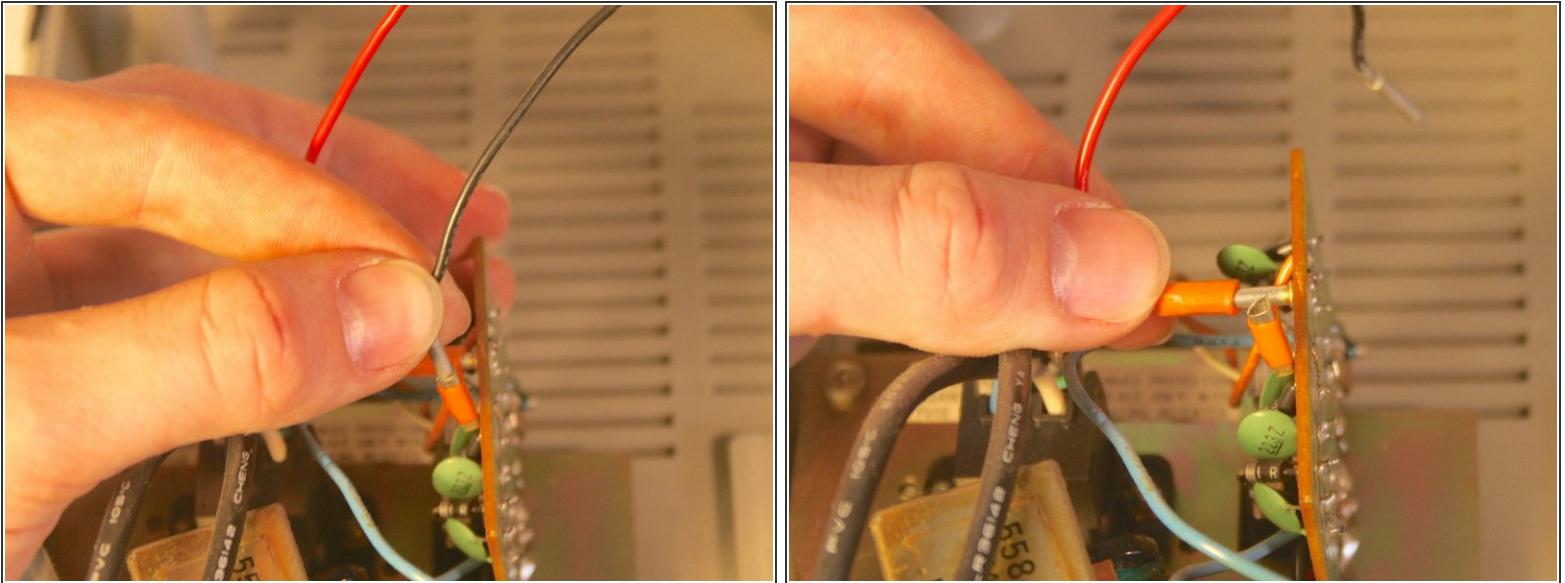
- Remove the nine 35 mm Phillips screws securing the back cover of the case.

Step 2



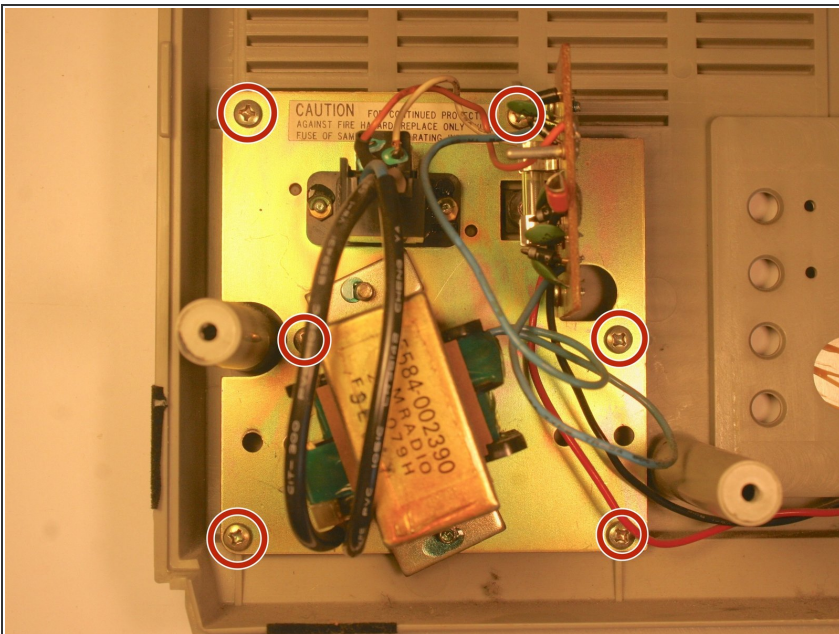
- Carefully remove the back cover.
- ⓘ Soldered wires connect electronics on the back cover to the internal electronics. Be careful not to break any connections.

Step 3



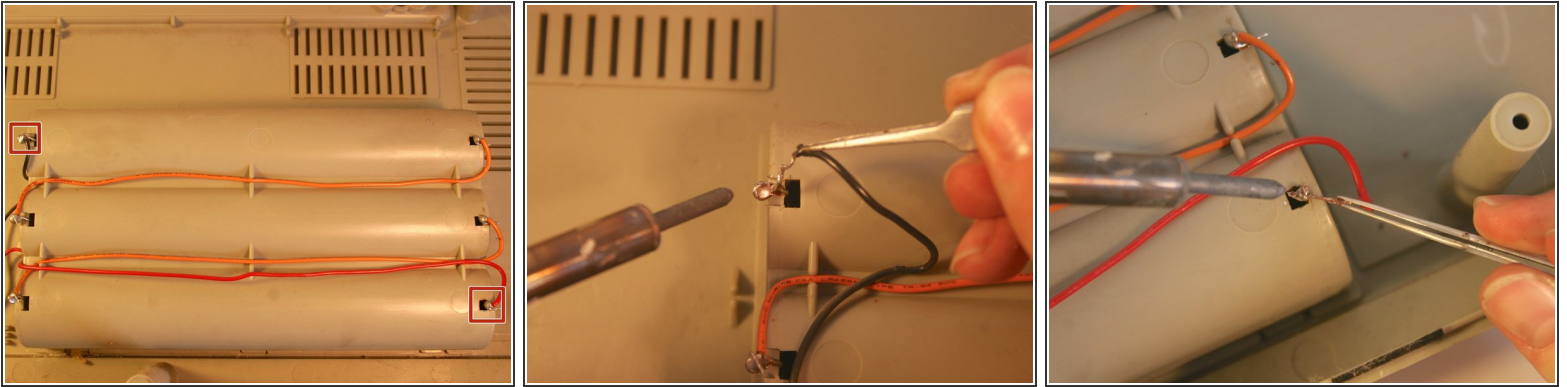
- Unplug the black and yellow wires connecting the power supply unit to the rest of the electronics:
- ⓘ This is not necessarily required. This step is to allow the back cover more movement as you work on the inside of the unit.

Step 4 — Internal Power Supply



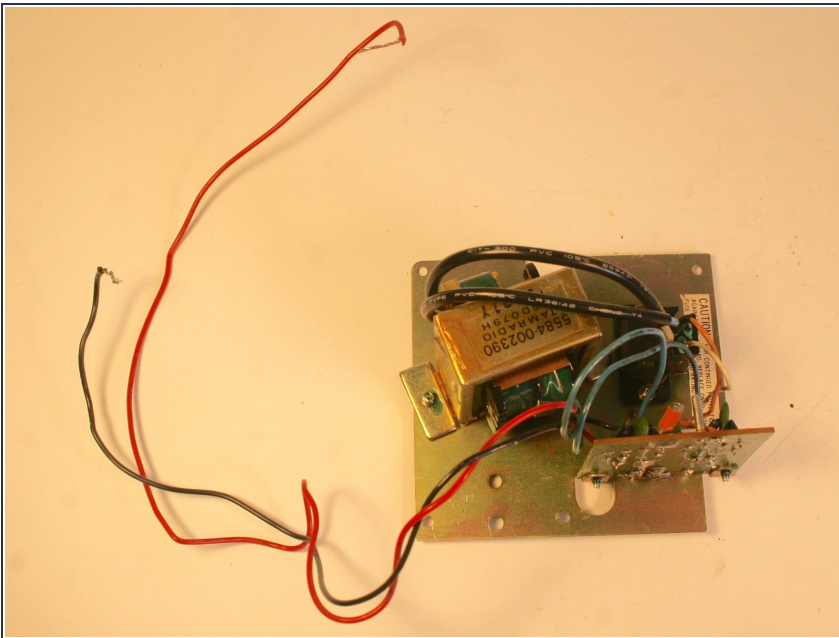
- Unscrew the six 10 mm Phillips screws holding the mounting plate in place.

Step 5



- Unsolder the wires connecting the power supply unit to the battery container.

Step 6



- Remove the power supply unit.

To reassemble your device, follow these instructions in reverse order.