



Montgomery Ward GEN-39500 Subwoofer Replacement

Written By: Dustin Platt



INTRODUCTION

The subwoofer produces the lower frequencies of sounds being played. This guide will show you how to replace the subwoofer in case the cone of the speaker is damaged.

TOOLS:

- [Phillips #2 Screwdriver](#) (1)
 - [Soldering Iron](#) (1)
-

Step 1 — Back Cover



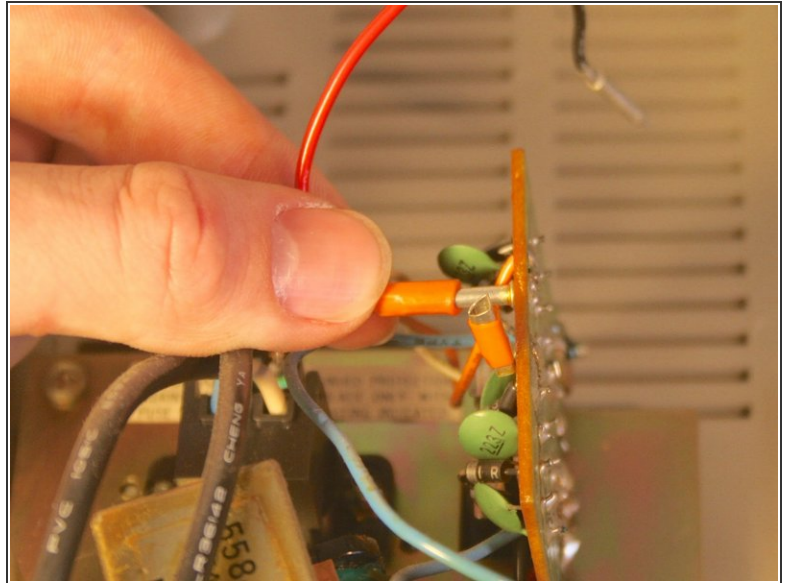
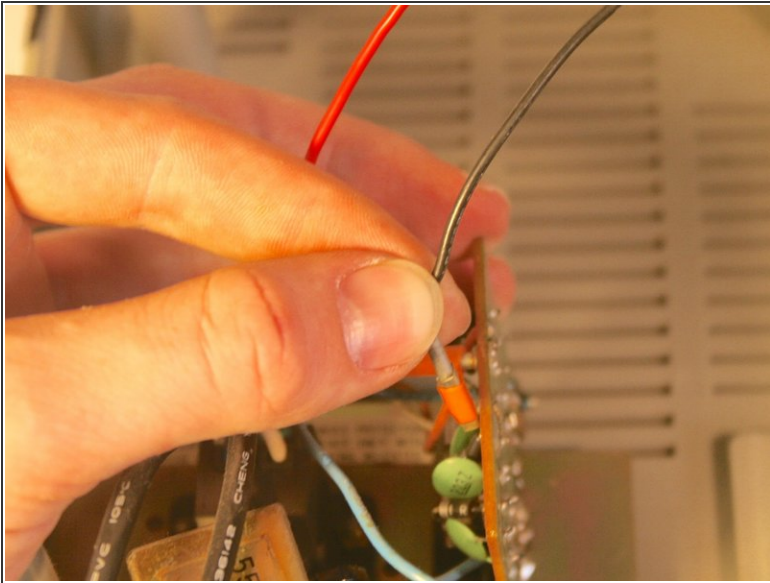
- Remove the nine 35 mm Phillips screws securing the back cover of the case.

Step 2



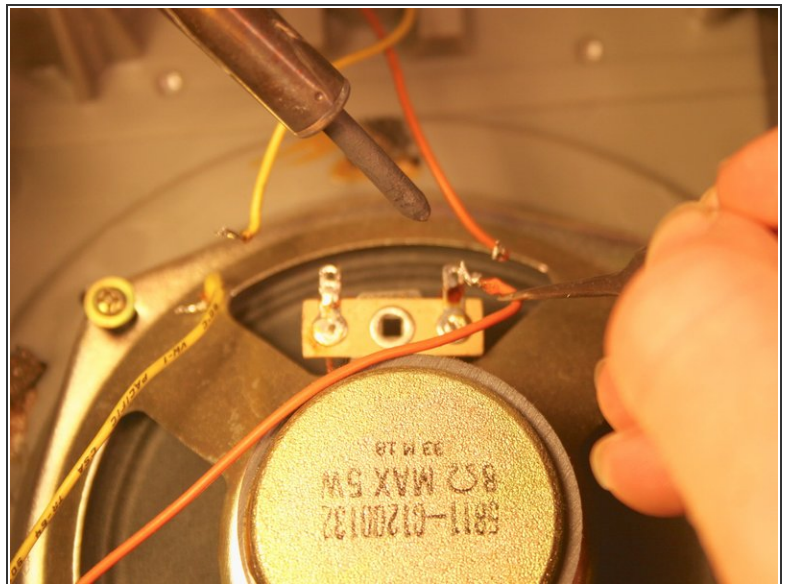
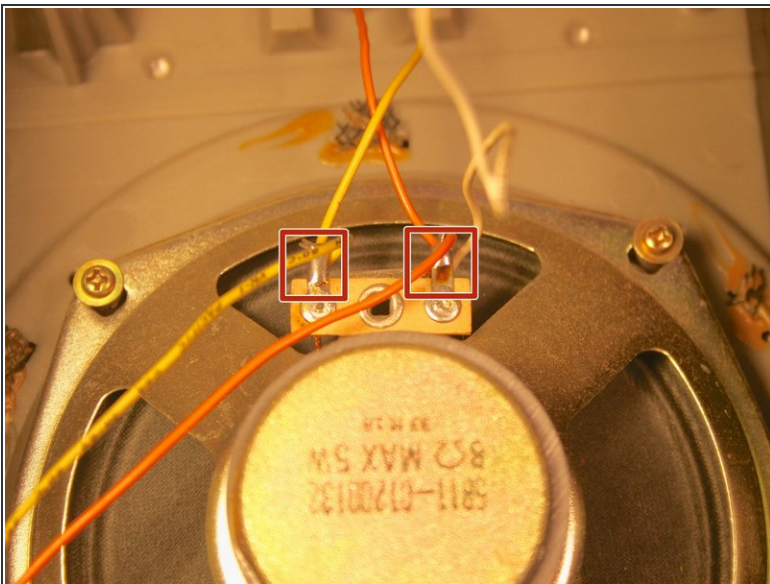
- Carefully remove the back cover.
- ⓘ Soldered wires connect electronics on the back cover to the internal electronics. Be careful not to break any connections.

Step 3



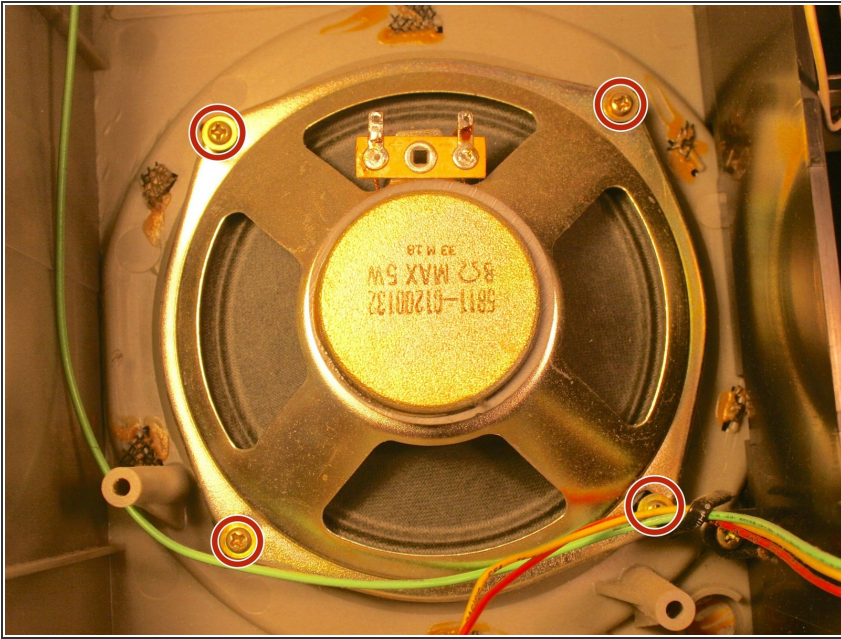
- Unplug the black and yellow wires connecting the power supply unit to the rest of the electronics:
- ⓘ This is not necessarily required. This step is to allow the back cover more movement as you work on the inside of the unit.

Step 4 — Subwoofer



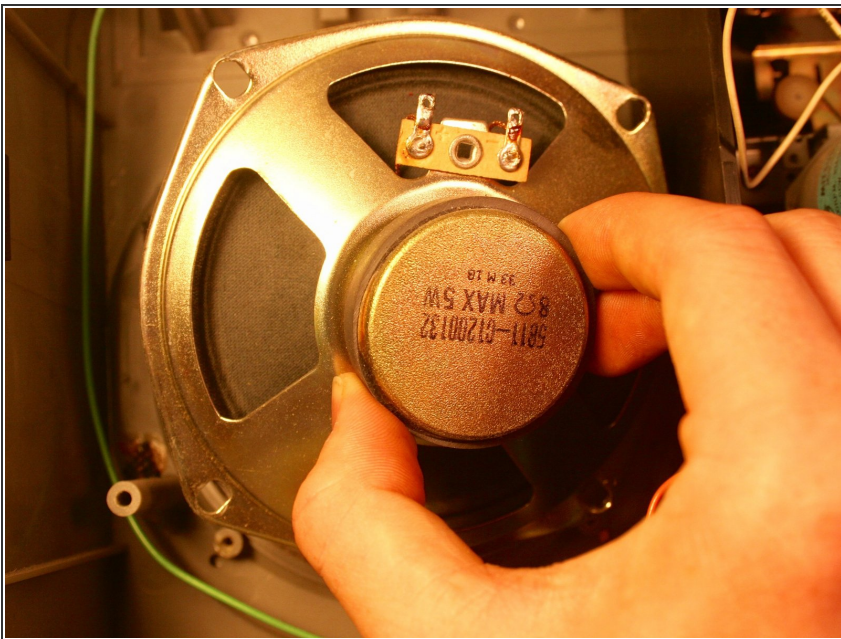
- Unsolder the wires leading to and from the subwoofer.

Step 5



- Unscrew the four 12.5 mm Phillips screws holding the subwoofer in place.
- ⓘ One of the screws holds down a metal cable organizer. For better cable organization after reassembly keep track of this organizer.

Step 6



- Remove the subwoofer.
- ⓘ The process is the same for both sides.

To reassemble your device, follow these instructions in reverse order.