



MacBook Pro 13" Unibody Mid 2010 LCD Replacement

Use this guide to replace the LCD rather than...

Written By: Walter Galan



INTRODUCTION

Use this guide to replace the LCD rather than the entire display assembly.

TOOLS:

Heat Gun (1)
Heavy-Duty Suction Cups (Pair) (1)
T6 Torx Screwdriver (1)
Phillips #00 Screwdriver (1)
Spudger (1)
TR8 Torx Security Screwdriver (1)
iFixit Screen Saver (1)

Optional: Ensures your display is clean and smudge-free!

PARTS:

MacBook Pro 13" Unibody LCD Panel (1)
13" Unibody LVDS Display Cable (1)

Step 1 — Remove the lower case screws



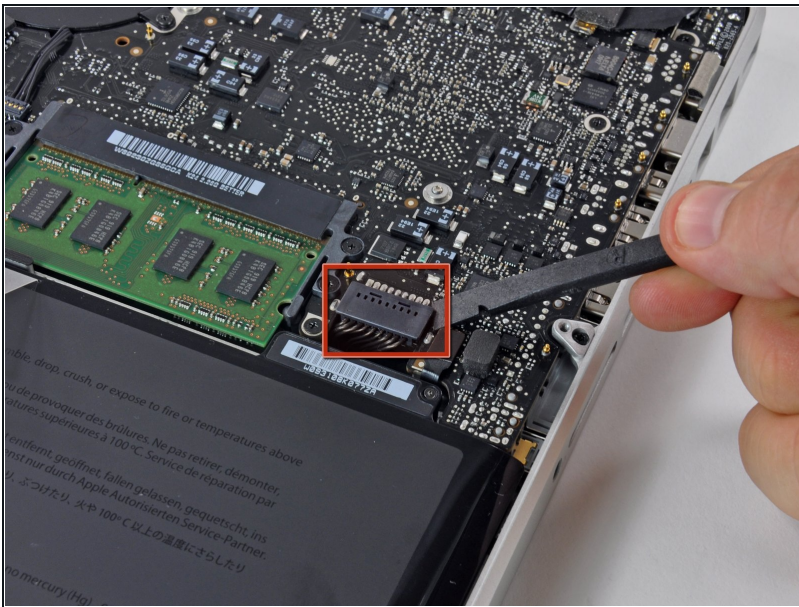
- Remove the following 10 screws securing the lower case to the MacBook Pro 13" Unibody:
 - Seven 3 mm Phillips screws.
 - Three 13.5 mm Phillips screws.

Step 2 — Lift the lower case away



- Slightly lift the lower case and push it toward the rear of the computer to free the mounting tabs.

Step 3 — Battery



⚠ For precautionary purposes, we advise that you disconnect the battery connector from the logic board to avoid any electrical discharge.

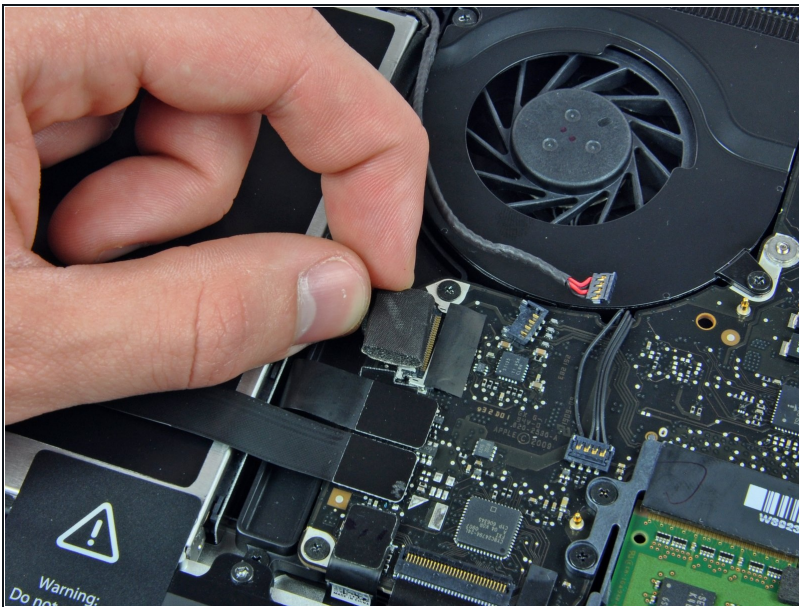
- Use the flat end of a spudger to lift the battery connector up out of its socket on the logic board.

Step 4 — Display



- Use the flat end of a spudger to pry up the subwoofer/right speaker cable connector out of its socket on the logic board.
- ⓘ Pry up from beneath the wires.

Step 5



- Disconnect the camera cable by pulling the male end straight away from its socket.
- ⓘ Make sure to pull the connector parallel to the face of the logic board and toward the optical drive, not straight up from its socket.

Step 6



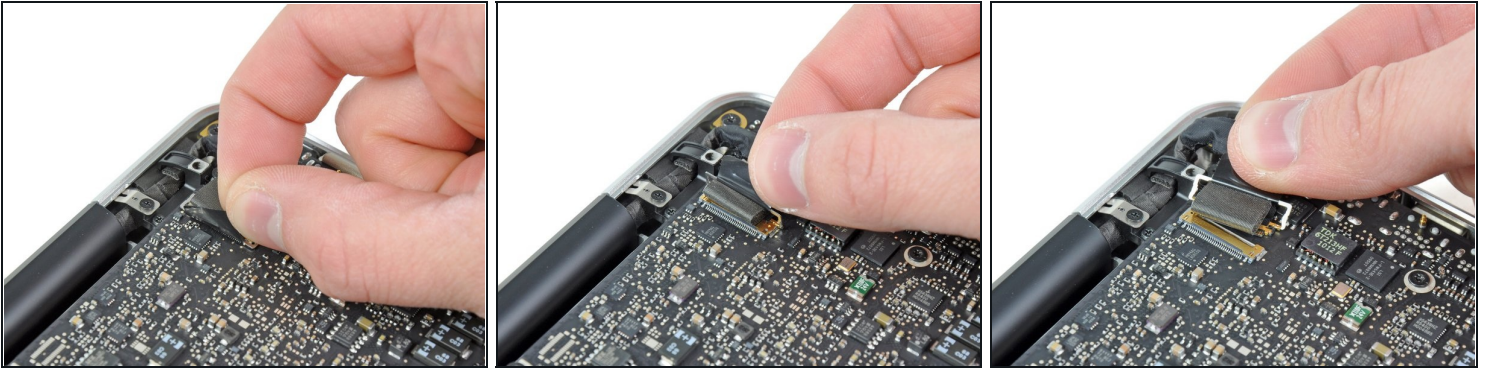
- De-route the camera data cable from the channel in the optical drive.

Step 7



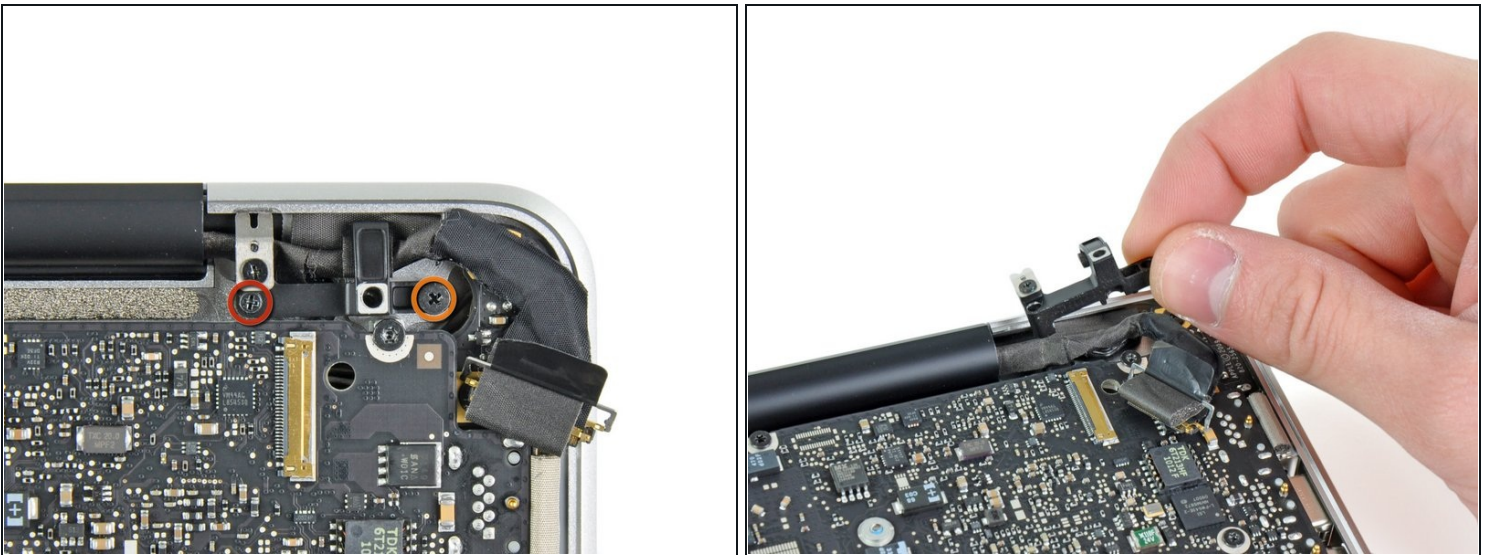
- Remove the following screws:
 - Two 10 mm Phillips screws
 - One 3.8 mm Phillips screw
- Slide the camera cable bracket out from under the subwoofer and remove it from the computer.

Step 8



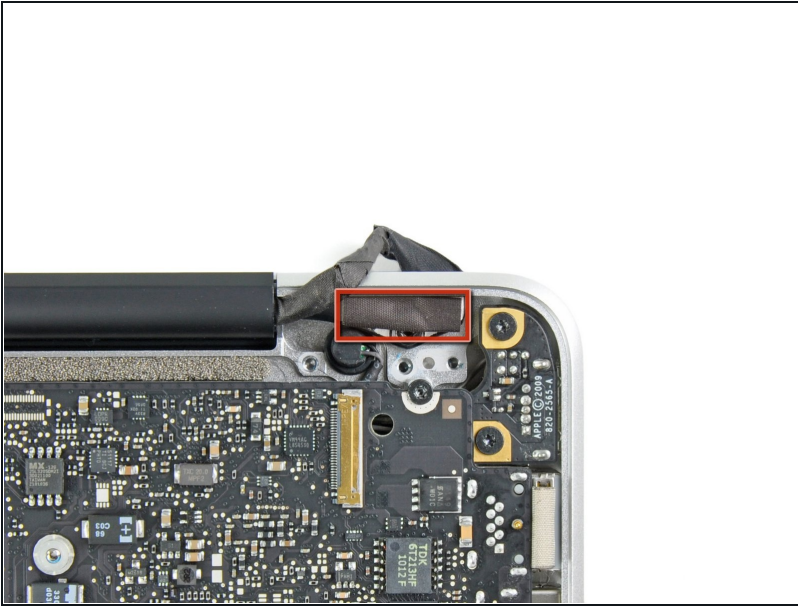
- Grab the plastic pull tab secured to the display data cable lock and rotate it toward the DC-In side of the computer.
- Pull the display data cable connector straight away from its socket.
- Make sure to pull the connector straight away and not straight up from its socket.

Step 9



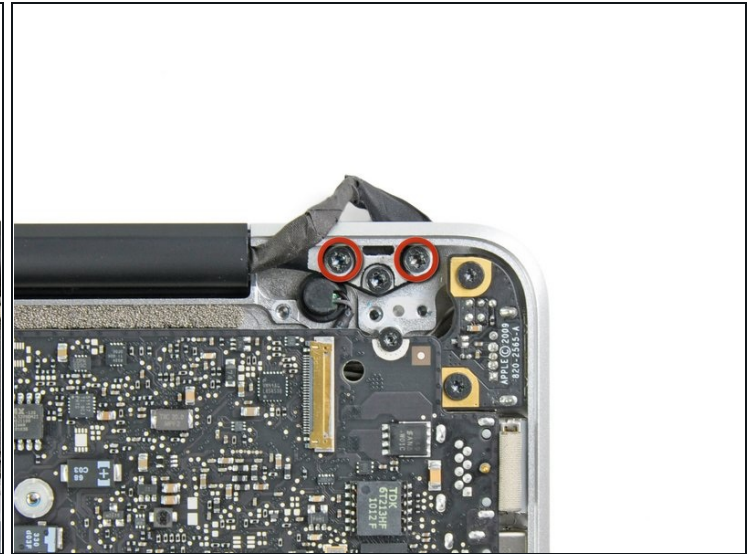
- Remove the following two screws securing the display data cable bracket to the upper case:
 - One 8.6 mm Phillips screw
 - One 5.6 mm Phillips screw
- Lift the display data cable bracket out of the upper case.

Step 10



- ⓘ If present, remove the small strip of foam tape stuck to the display screws near the display data cable.

Step 11



- Remove the two outer 6.5 mm T8 Torx screws securing each of the two display brackets to the upper case (4 screws total).

Step 12



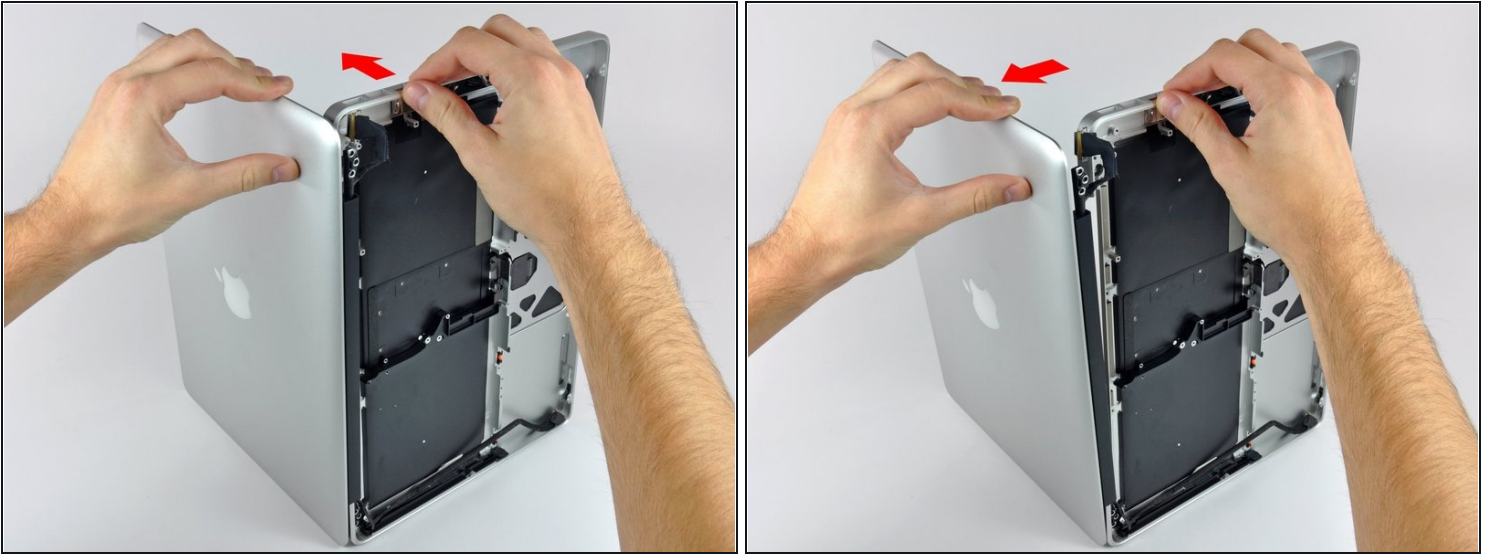
- Open your MacBook so the display is perpendicular to the upper case.
- Place your opened MacBook on a table as pictured.
- While holding the display and upper case together with your left hand, remove the remaining 6.5 mm T8 Torx screw from the lower display bracket.

Step 13



- ⚠ Be sure to hold the display and upper case together with your left hand. Failure to do so may cause the freed display/upper case to fall, potentially damaging each component.
- Remove the last remaining T8 Torx screw securing the display to the upper case.

Step 14



- Grab the upper case with your right hand and rotate it slightly toward the top of the display so the upper display bracket clears the edge of the upper case.
- Rotate the display slightly away from the upper case.

Step 15



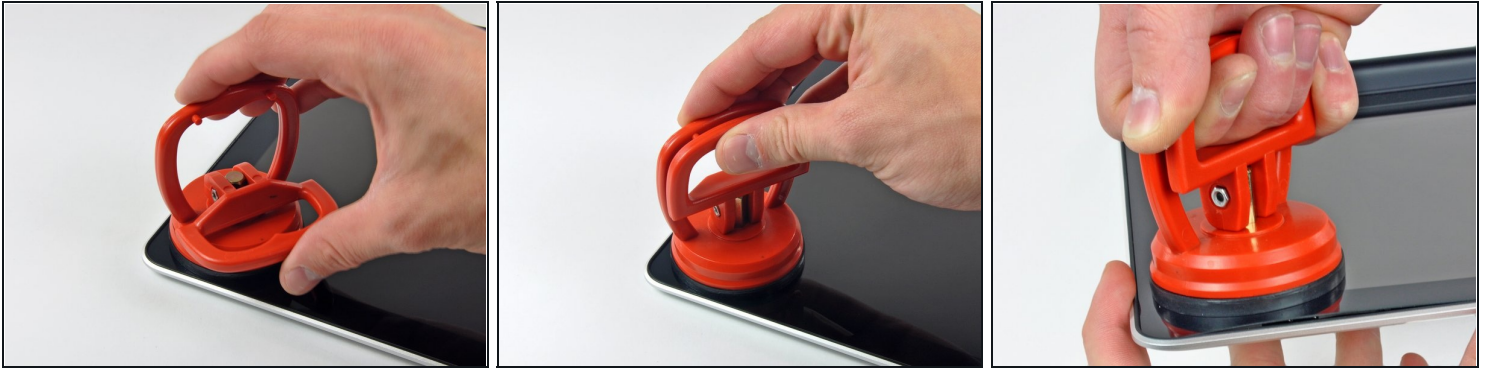
- Lift the display up and away from the upper case, minding any brackets or cables that may get caught.

Step 16 — Front Display Glass



- ① In the following steps, you will use a heat gun to soften the adhesive securing the outer black border around the underside of the front glass panel to the display. The area the adhesive is applied to is shown in red in the second picture.
- With the heat gun set to low, start by heating the outer black border near the upper right corner of the glass panel.
- ⚠ Always aim the heat gun away from the soft rubber strip around the display glass. Heating the rubber will cause it to melt slightly, turning its finish from matte to glossy. Touching overheated rubber can cause it to permanently deform.
- ① Due to the heat applied, it is normal for a layer of condensation to develop on the inside of the glass panel and/or the outside of the LCD. It can be removed with glass cleaner once the glass is separated from the display.

Step 17



- With the panel sufficiently heated, fasten a heavy-duty suction cup near the upper right corner of the display glass.

⚠ Don't fasten the suction cup on top of the rubber strip around the edge of the display glass.

- ① To attach the [suction cups](#) we sell, first position the suction cup with the movable handle parallel to the face of the glass panel. While lightly holding the suction cup against the glass, raise the movable handle until it is parallel with the other handle.
- Slowly and gently pull the corner of the display glass up off the display assembly.
- ① If only the top edge of the glass lifts up (as seen in the third picture), repeat steps one and two until you can lift up the corner of the panel.

Step 18



- Gently lift the corner of the display glass enough to insert a spudger between it and the display assembly.
- Use the flat end of a spudger to gently pry up the adhesive securing the front glass to the display.
- Pry up the glass panel a few inches away from the upper right corner along the top and right edges of the display.

Step 19



- Use a heat gun to soften the adhesive under the black strip along the right side of the front glass panel.
 - Attach a suction cup along the right side of the front glass panel.
 - Pull up on the glass panel while you use the flat end of a spudger to separate it from the rest of the display assembly.
 - Continue working along the right edge of the front display glass until it is separated from the display.
- ⓘ It may be helpful to use a guitar pick or another thin plastic object to keep the upper right corner of the front glass panel from sticking back down to the display assembly.

Step 20



- Use your heat gun to soften the adhesive under the black strip along the top edge of the glass display panel.
- Attach a suction cup near the top edge of the glass display panel and use it to pull the glass panel up off the display.
- Work along the top edge of the glass panel, carefully using the flat end of a spudger to separate the adhesive if necessary.

Step 21



- Use a heat gun to soften the adhesive under the black strip near the upper left corner of the glass display panel.
 - Attach a suction cup near the upper left corner of the glass display panel.
 - Pull up on the suction cup and use the flat end of a spudger to carefully pry the glass display panel out of the display assembly.
- ⓘ Once the upper left corner has been separated from the display, it may be helpful to use a guitar pick or another thin plastic object to keep the glass from sticking back down to the display assembly.

Step 22



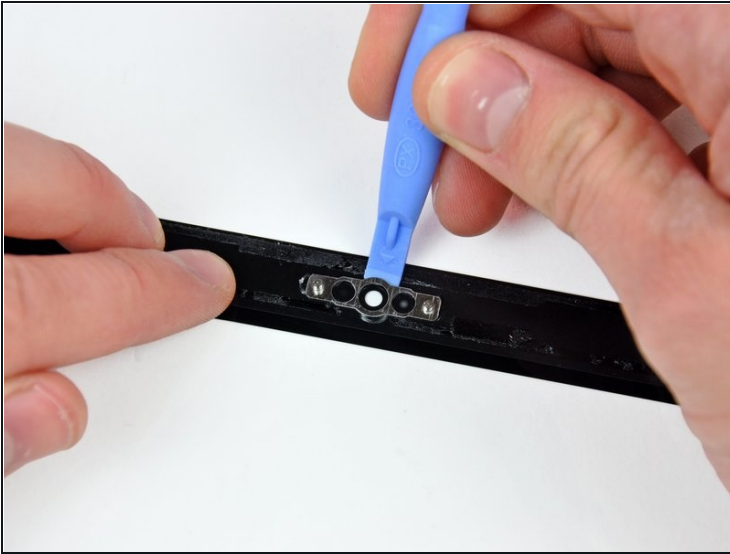
- Use a heat gun or hair dryer to soften the adhesive under the black strip along the left side of the front glass panel.
- Attach a suction cup along the left side of the front glass panel.
- Pull up on the glass panel while you use the flat end of a spudger to separate it from the rest of the display assembly.
- Continue working along the left edge of the front display glass until it is separated from the display.


Step 23



- Now that the top, left, and right edges of the glass are free from the display, slowly lift the top edge of the glass panel and gently rotate it out of the display.
- ⓘ If necessary, use the flat end of a spudger to free the bottom edge of the glass display panel from the display assembly.
- ✦ Before reassembling, be sure to clean both the inside of the glass display panel and the LCD as any dust or fingerprints trapped inside will be annoyingly visible when the machine is on.

Step 24



 Skip this step if you're reusing the original glass.

- Insert the edge of a plastic opening tool between the display glass and the camera bracket, and run it around the camera bracket to separate it from the display glass.
- ☒ Do not forget to stick the camera bracket down to the new front display glass before reassembly.

Step 25



- ① During the glass removal process, the camera cable may stick to the adhesive on the glass panel, disconnecting it from the camera board as the panel is lifted. If your camera cable is still connected to the camera board, skip this step.
- To reconnect the cable, first use the tip of a spudger to remove the piece of foam tape over the camera cable ZIF socket.
- Use the tip of a spudger to flip up the ZIF cable retainer on the camera cable socket.
- Insert the camera cable into its socket on the camera board and use the tip of a spudger to snap down the ZIF cable retainer, locking the cable in place.
- ☑ Reapply the piece of tape covering the camera cable socket.

Step 26 — Clutch Cover



- Slide the clutch cover toward the right edge of the display.

⚠ The clutch cover will move approximately .25" and stop. Do not force it too far to the right.

- ★ When reinstalling the clutch cover, be sure to slip it over the components protruding from the lower edge of the display about .25" to the right of its final installed position on the display.

Step 27



- Starting at its far right end, rock the clutch cover along its long axis while pulling it away from the clutch hinge.
 - Working from right to left, carefully continue to release and lift the clutch along the lower edge of the display assembly.
 - Lift the clutch cover up off the front bezel and set it aside.
- ☒ When reinstalling the clutch cover, be sure to widen the opening when slipping it over the small black plastic cosmetic cover that fills the open end of the clutch cover when it is in place. The cosmetic cover has very thin and delicate plastic arms that hold it to the right clutch hinge.

Step 28 — LCD



- De-route the display data cable from its retaining bracket near the lower left edge of the display.

Step 29



- Remove the following six screws securing the LCD panel to the front bezel:
 - Four 3.25 mm Phillips with large heads.
 - Two 3.2 mm Phillips with small heads.

Step 30



- ⚠ Do not try to remove the LCD yet. The circuitry along its lower edge is wedged in a gap along the lower edge of the display recess in the aluminum display assembly.
- Hold the display vertically and tip it enough to grab the top edge of the LCD and rotate it slightly out of the display assembly, being careful not to break the circuitry off its lower edge.

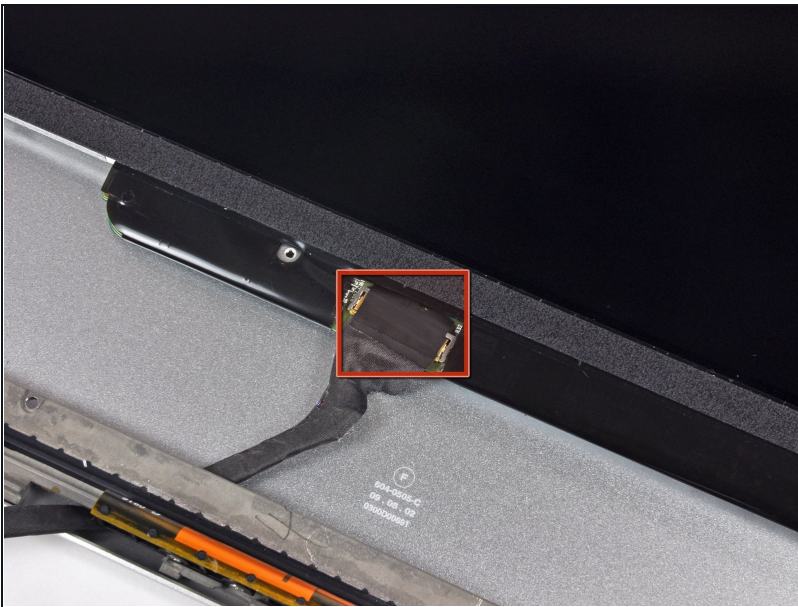
Step 31



- Pull the LCD toward the top edge of the display to slide the circuitry along its lower edge out of the recess in the aluminum display assembly.

i It may be helpful to use one hand to feed the display data cable through its channel in the aluminum display assembly as you pull the LCD toward the top edge of the display with the other hand.

Step 32



- Peel the piece of tape covering the display data cable connector away from the edge closest to the LCD.

Step 33



- Use the tip of a spudger to flip up the thin steel retaining clip securing the display data cable to its socket on the LCD.
- Pull the display data cable straight away from its socket on the LCD.
- Lift the LCD out of the display assembly and set it aside.

To reassemble your device, follow these instructions in reverse order.