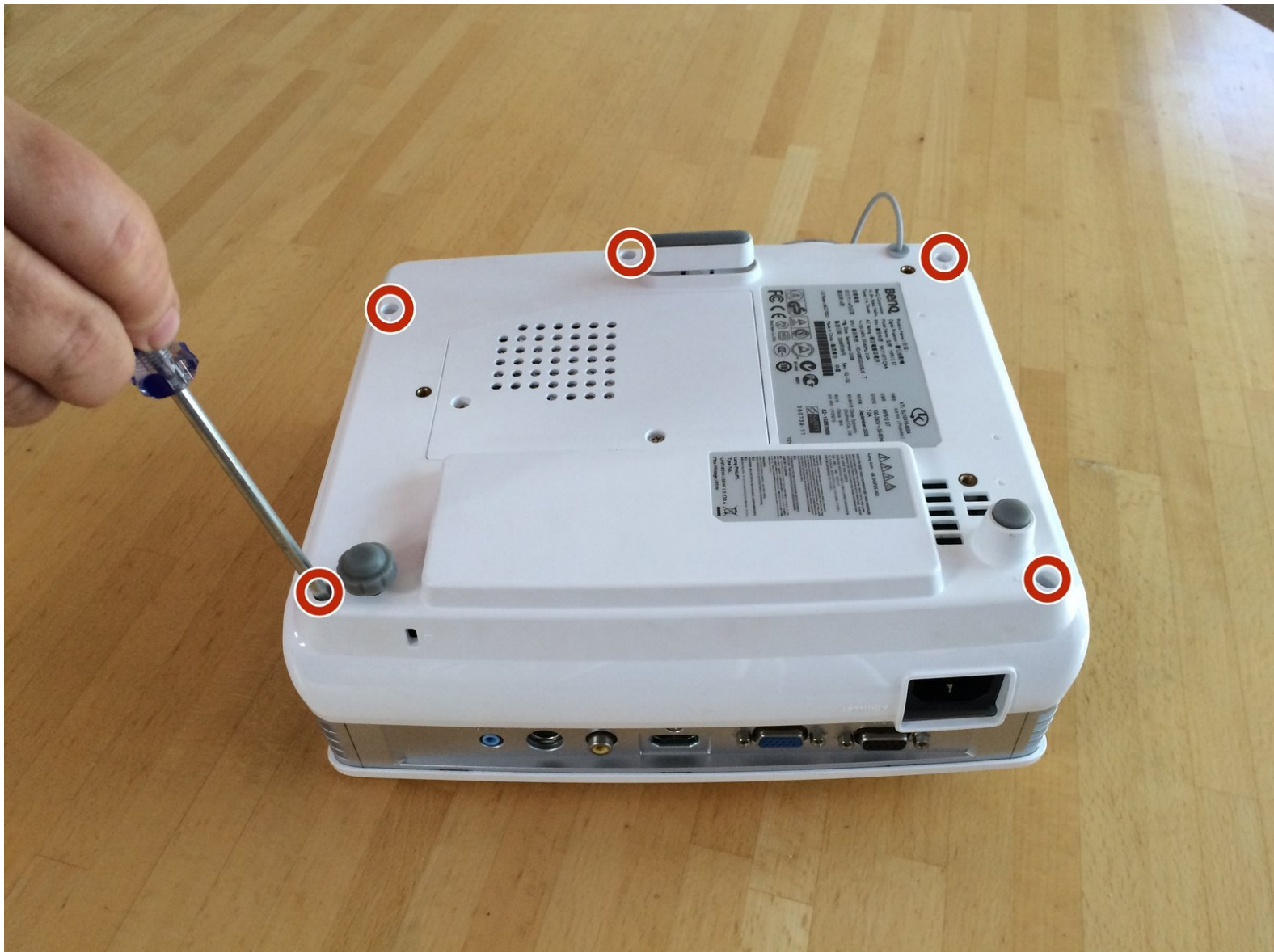




Replacing BenQ MP512ST Projector Central Fan

This guide shows a fast and easy way to replace the central fan in a BenQ MP512ST Projector.

Written By: Dante Mazzanti



INTRODUCTION

Follow the steps in this guide to replace your broken central fan in your projector.



TOOLS:

- [Phillips #2 Screwdriver](#) (1)
- [Flathead Screwdriver](#) (1)



PARTS:

- [MP512ST Projector Replacement Central Fan](#) (1)

Step 1 — Central Fan



⚠ Be certain that the projector is powered off before beginning disassembly.

- Remove the five Phillips screws on the bottom of the projector.

Step 2



- Remove the Phillips screw on the back of the projector.

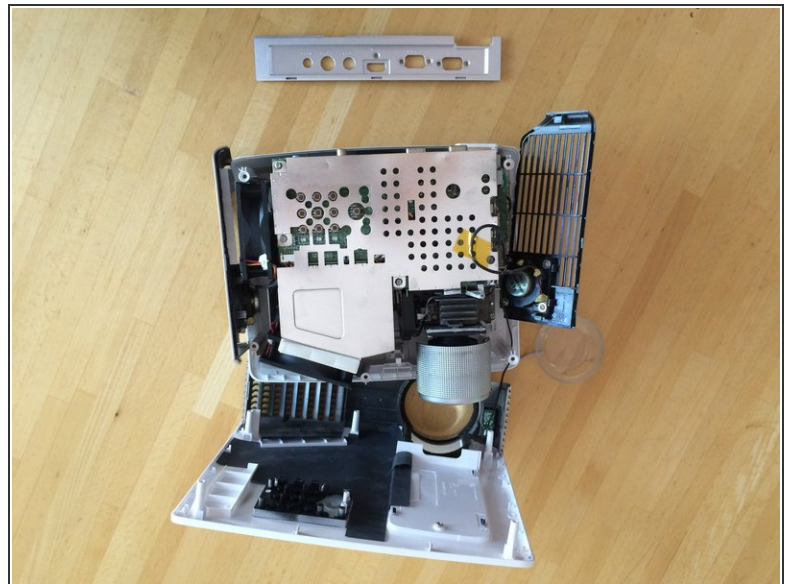
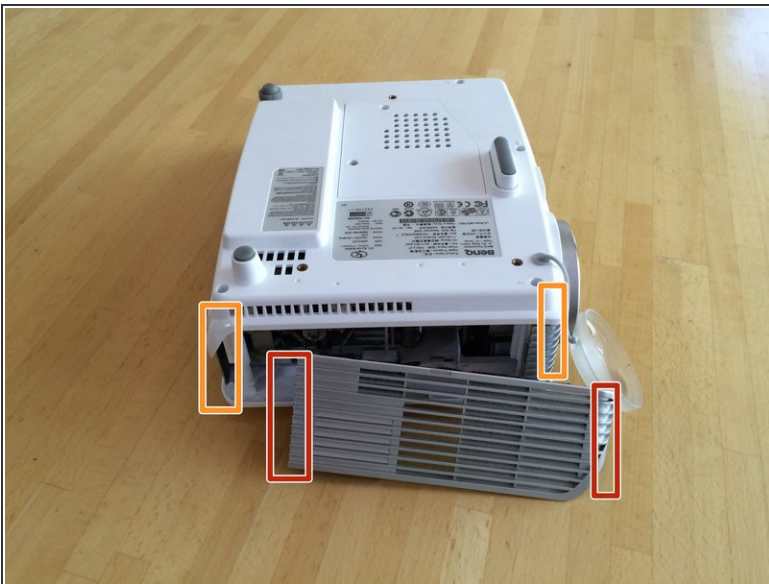
Step 3



- Remove the four lock screws.

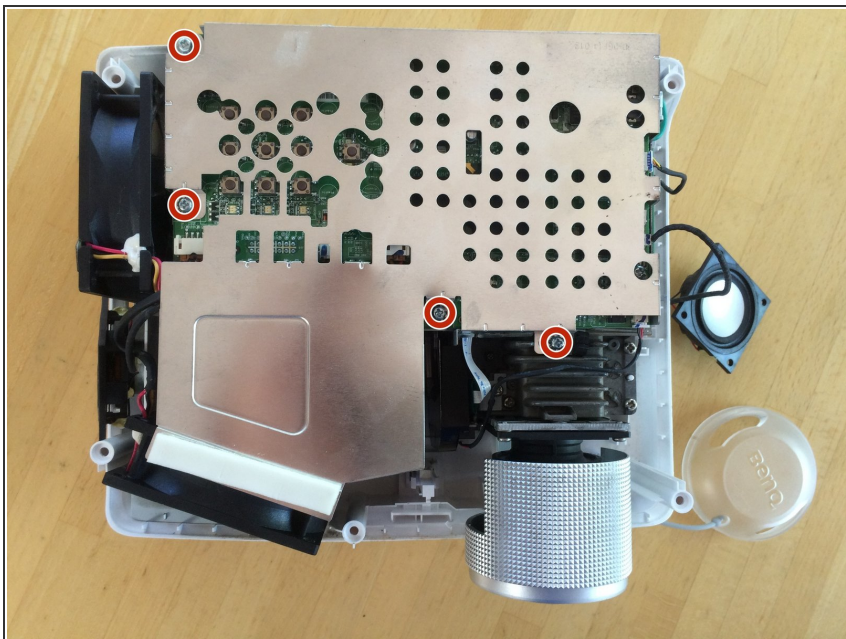
ⓘ You may need to use pliers at first if the lock screws are too hard to twist with your fingers.

Step 4



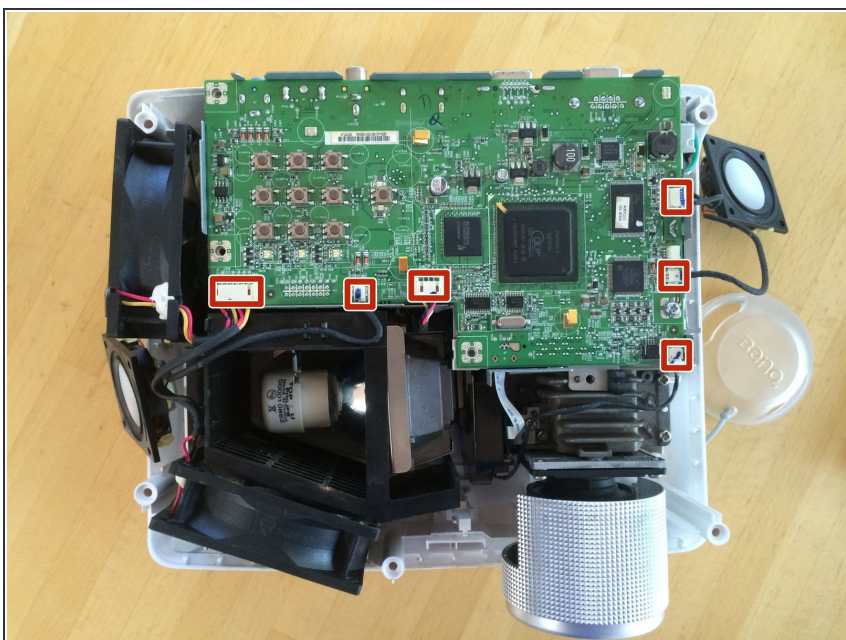
- Pry the sides of the case off using your fingers.
- ⚠ Do not pull too hard on the sides because you may break the speaker wires attached to them.
- Pop the tabs connecting the rest of the case together by running your fingers underneath the edges.

Step 5



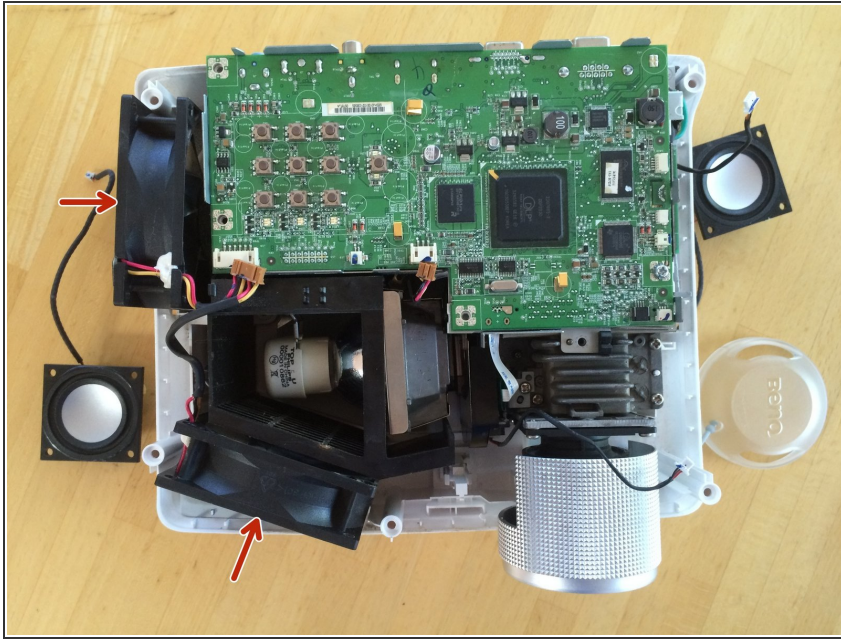
- Remove the metal plate covering the circuit board by removing the four Phillips screws.

Step 6



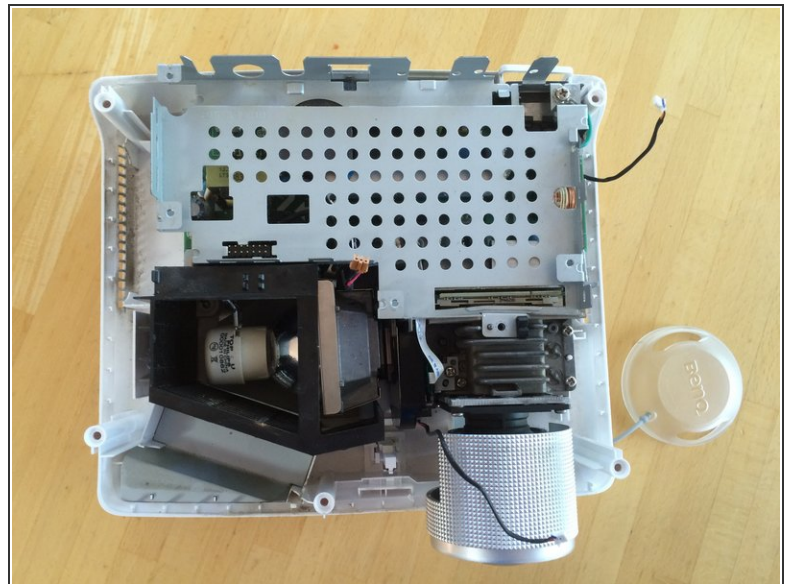
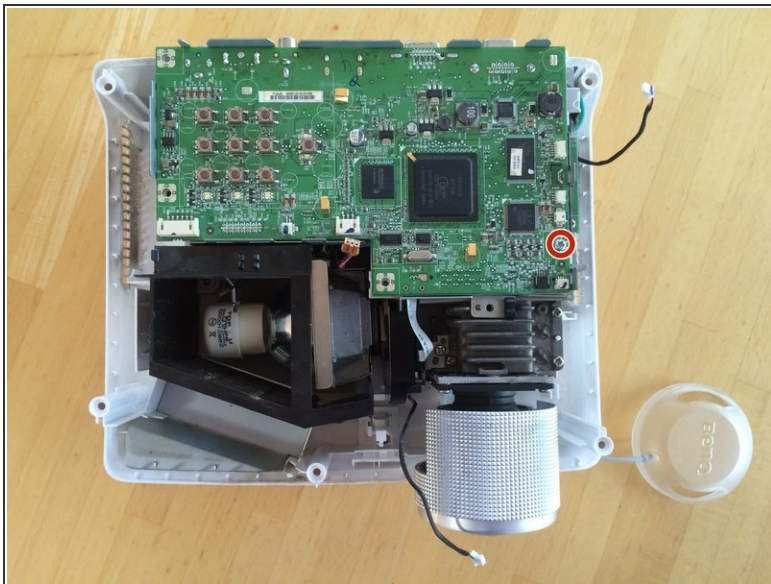
- Unplug the six cables by gently pulling up on the cable's connector.
- ⚠ Avoid pulling on the connector attached to the board as you may accidentally tear it off.

Step 7



- Remove the two fans.

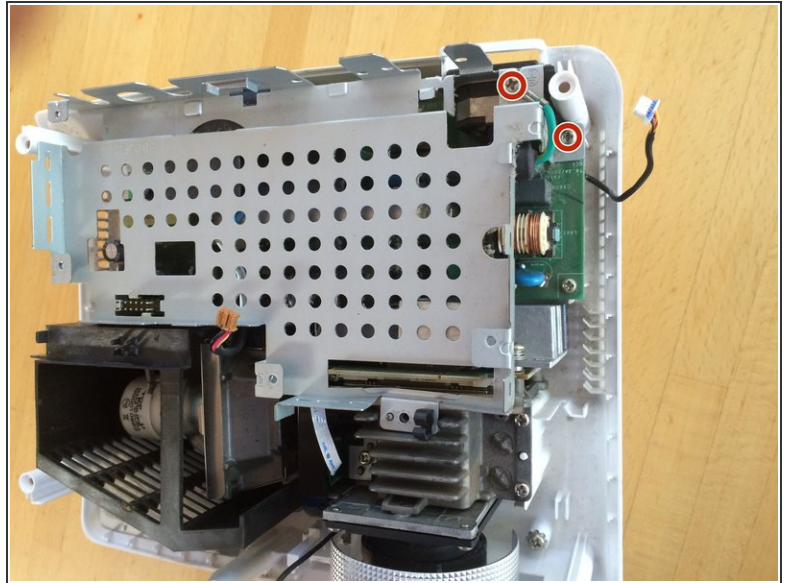
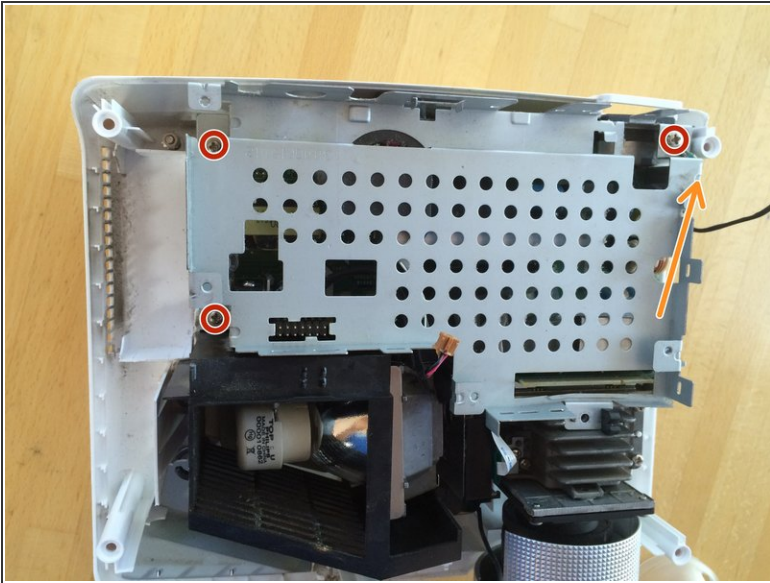
Step 8



- Remove the single Phillips screw on the circuit board.
- Gently pull up on the circuit board to remove it.
- ⓘ The circuit board still has a few connections to the other circuit board placed underneath it. Don't worry about these as they will disconnect as you lift up on the circuit board.

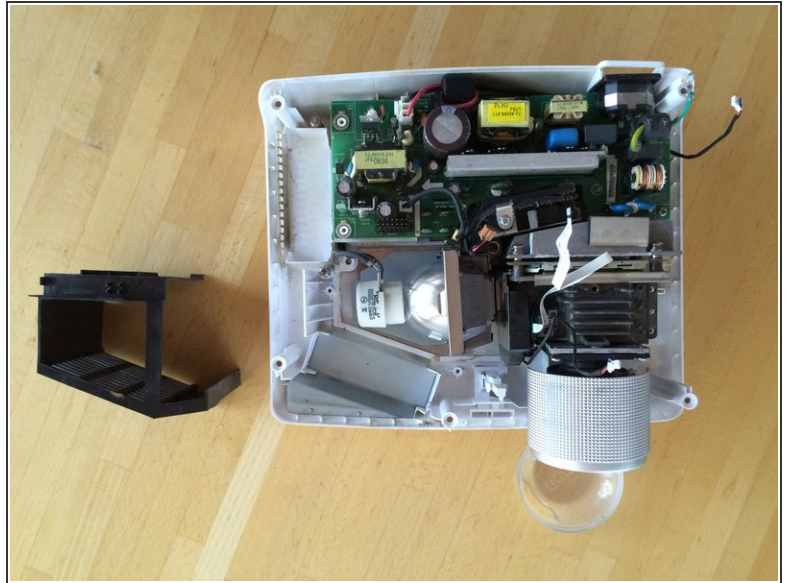
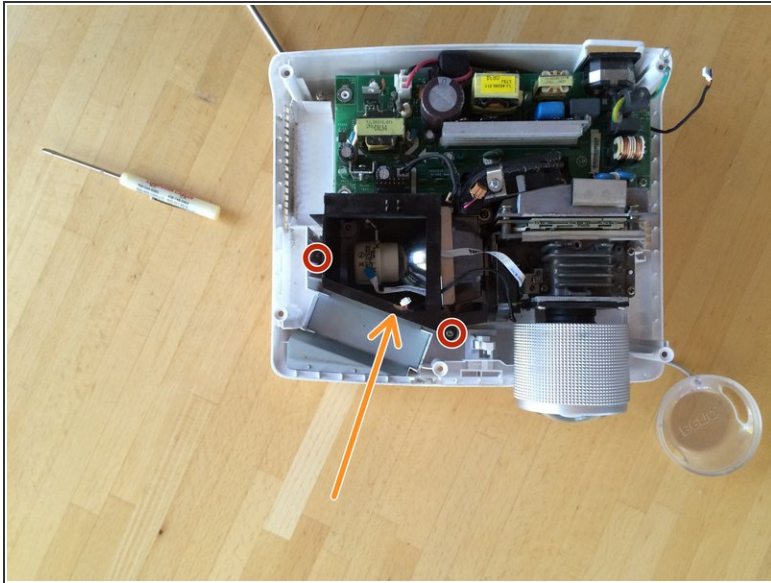
This document was generated on 2020-11-22 07:21:47 PM (MST).

Step 9



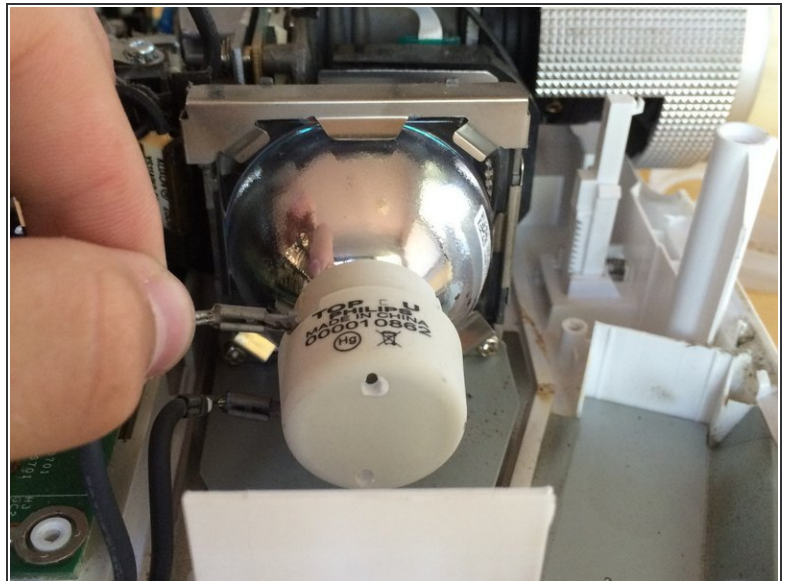
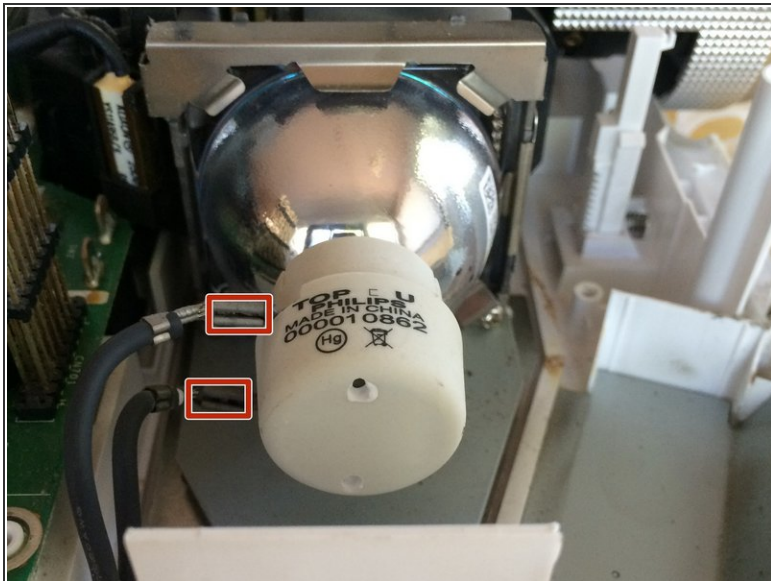
- Remove the four Phillips screws.
- ① The orange arrow points to the location of the fourth screw which can be seen in the second picture.

Step 10



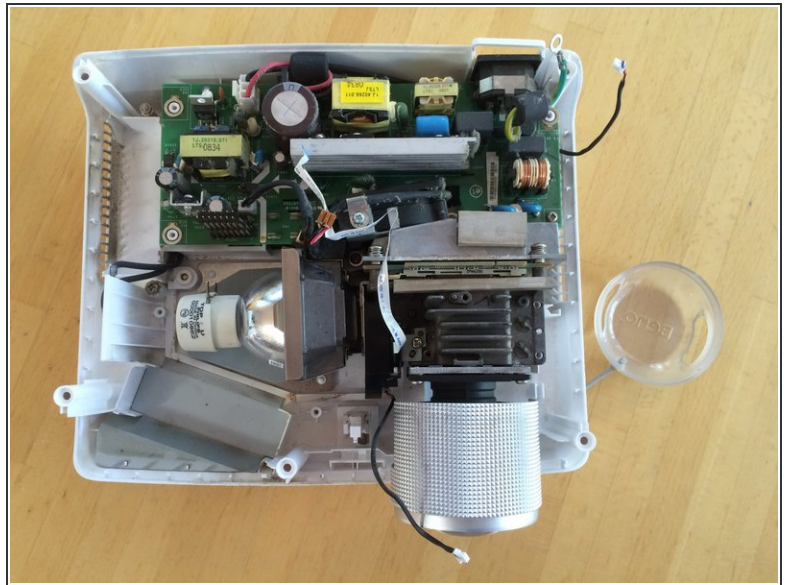
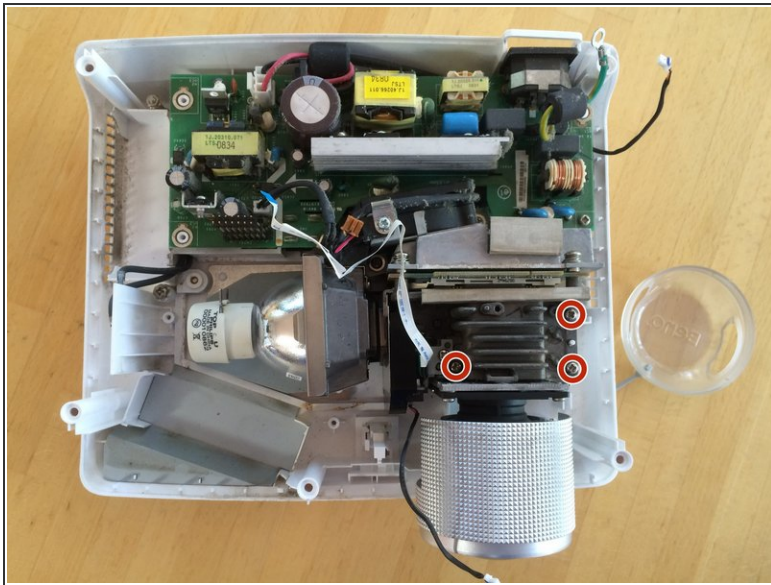
- Remove the two Phillips screws.
 - ⓘ The screw on the left is between two tall pieces of plastic which can make it difficult to see.
- Lift up on the black plastic casing around the light bulb and remove it from the projector.

Step 11



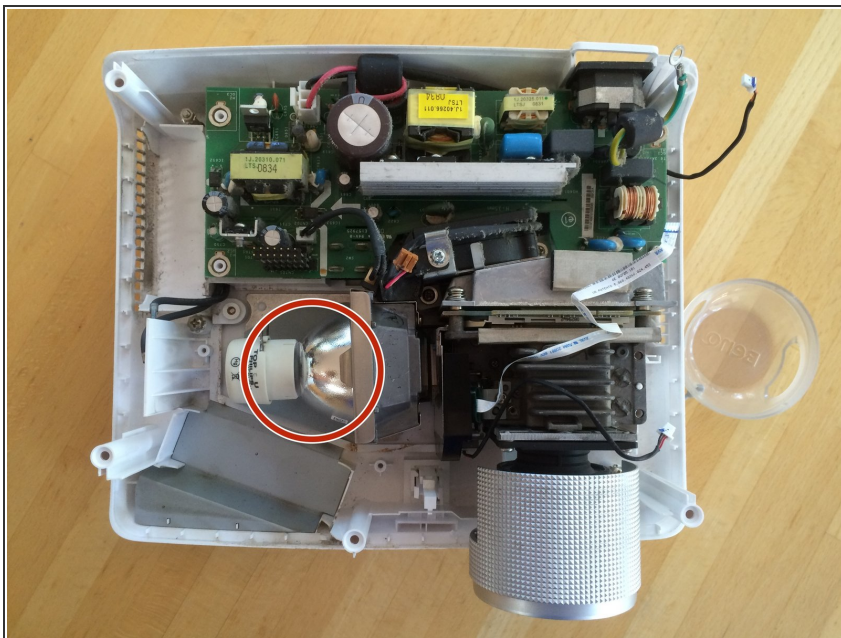
- Disconnect the power supply from the light bulb by gently pulling on the two metal tabs attached to it.

Step 12



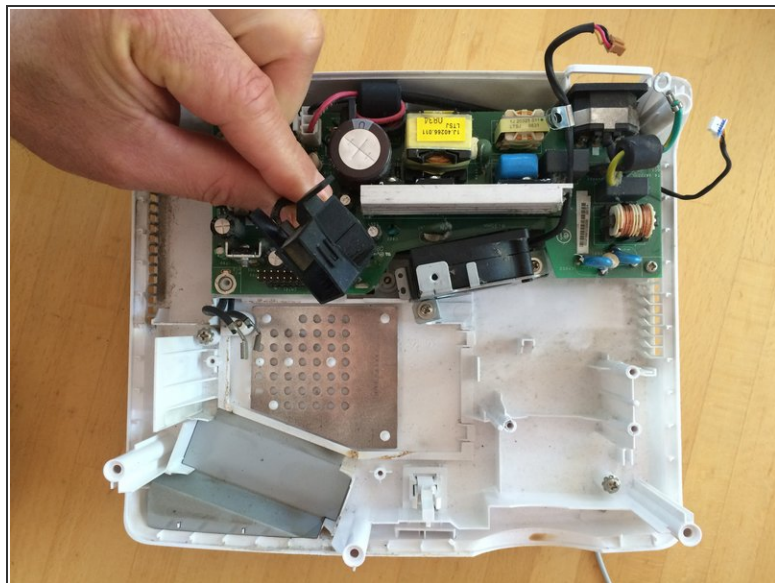
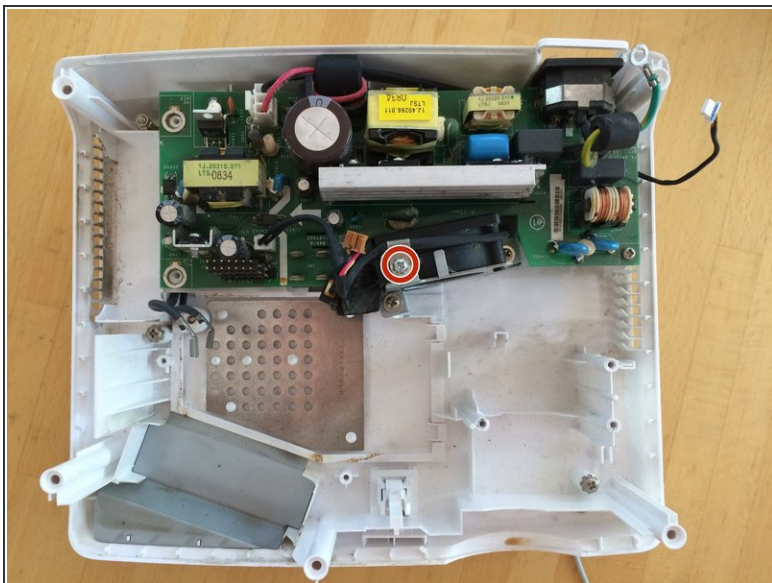
- Remove the three screws circled in red that are holding the heat sink to the bottom part of the case.

Step 13



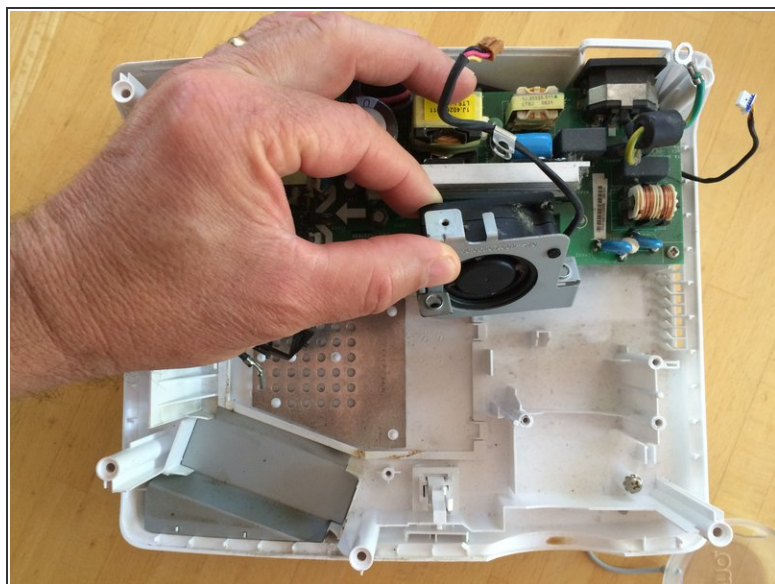
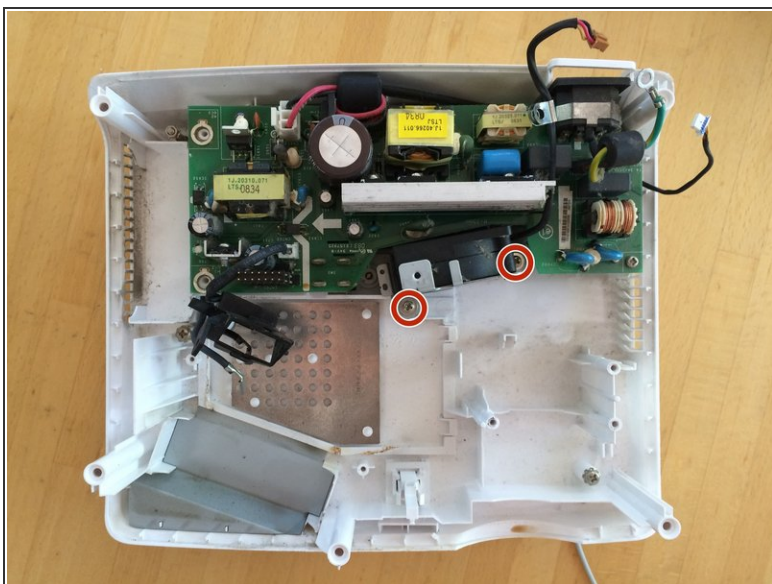
- Lift the lens/light bulb combo out of the case.
- ⓘ It is necessary to remove the lens/light bulb combo in order to have easy access to the central fan.

Step 14



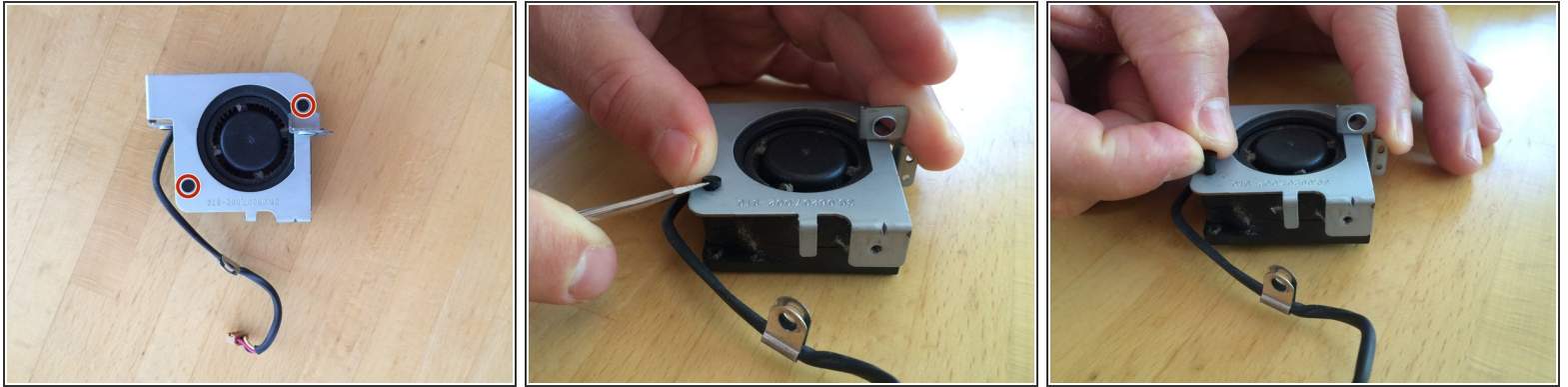
- Remove the Phillips screw.
- Slide the plastic piece on the left side of the fan out of its position.

Step 15



- Remove the two screws.
- Lift the fan out of the case.

Step 16



- Remove the two connectors holding the fan to the metal frame.
- Insert a flat head screw driver or other prying tool under the head of the connector and gently pry up.
- Insert the new fan in place of the old one.

To reassemble your device, follow these instructions in reverse order.