



# Apex Digital DTV Converter Box Power supply Board replacement

If the power supply board of your converter box died here is how to replace it.

Written By: Michel



# INTRODUCTION

How to open the converter box and replace the power supply...



## TOOLS:

- [Phillips #2 Screwdriver](#) (1)



## PARTS:

- [Replacement Power Board](#) (1)

## Step 1 — Power Board



- Unplug your device from the wall outlet.

## Step 2



- Remove the screws on the sides and rear. There are two on each side and four on the back.
- Note: only remove the black ones (the silver ones stay for now). You should have removed eight identical screws by now.



## Step 3



- Lift the top cover up and toward you simultaneously. It shouldn't require very much force.

## Step 4



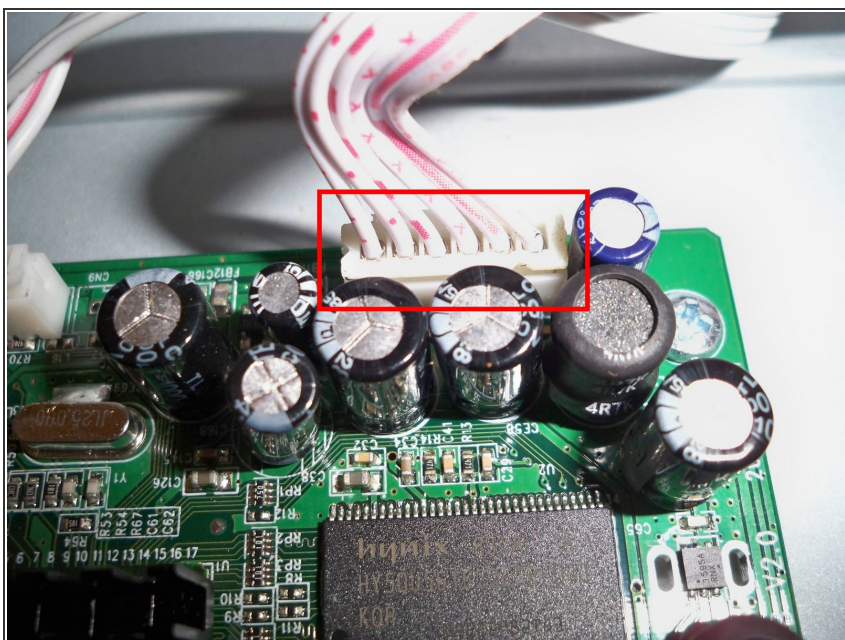
- Locate the power board inside the converter box.
- Circled in red in the picture.

## Step 5



- Remove this plug
- You will need to squeeze the locking lever to release it. don't pull too hard.
- Circled in red in the picture.

## Step 6



- Remove this plug from the main board. It is not detachable from the power board end.
- Be gentle.
- Circled in red in the picture



## Step 7



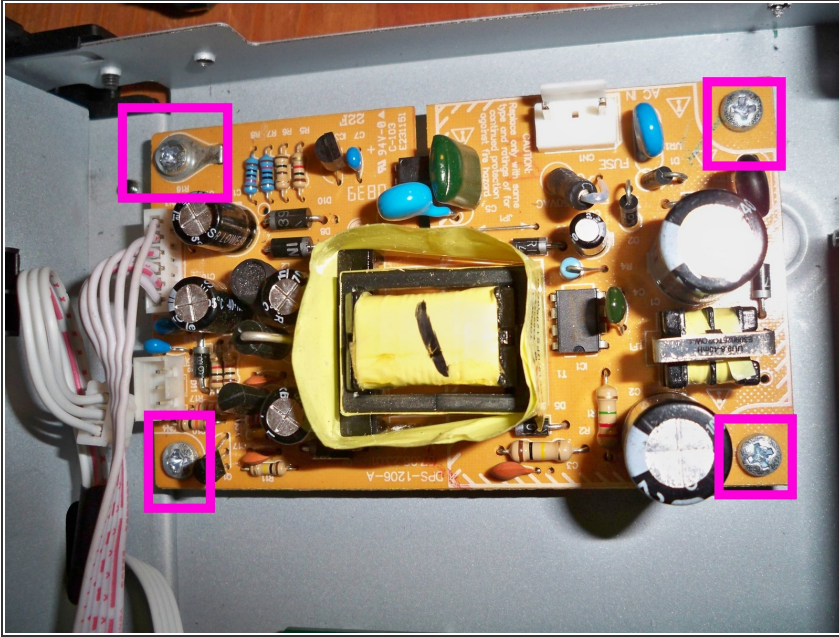
- Remove one last cable. This one leads to the front panel
- Be gentle.
- Circled in red

## Step 8



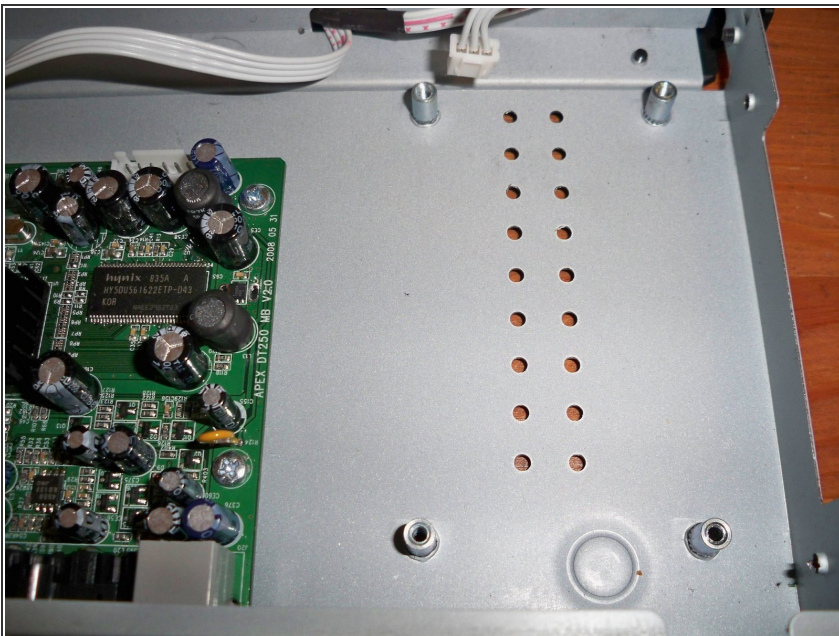
- Remove the power cord from its slot in the casing. This will make it easier to remove the power board.
- Circled in blue

## Step 9



- Remove the four silver colored philips screws holding the power board in.
- Marked in pink (eeww)

## Step 10



- Lift the power board out. Be careful to not touch the bottom of the power board. even when unplugged, it may still hold a charge.
- Here is the empty spot.

To reassemble your device, follow these instructions in reverse order.