



Petra KM 31 17 Capacitor Replacement

If your machine suddenly turns off while...

Written By: benston



INTRODUCTION

If your machine suddenly turns off while heating up or brewing, one or more bad capacitors are often the cause.

TOOLS:

Soldering Iron (1)
TR10 Torx Security Screwdriver (1)
Spudger (1)
6-in-1 Screwdriver (1)

PARTS:

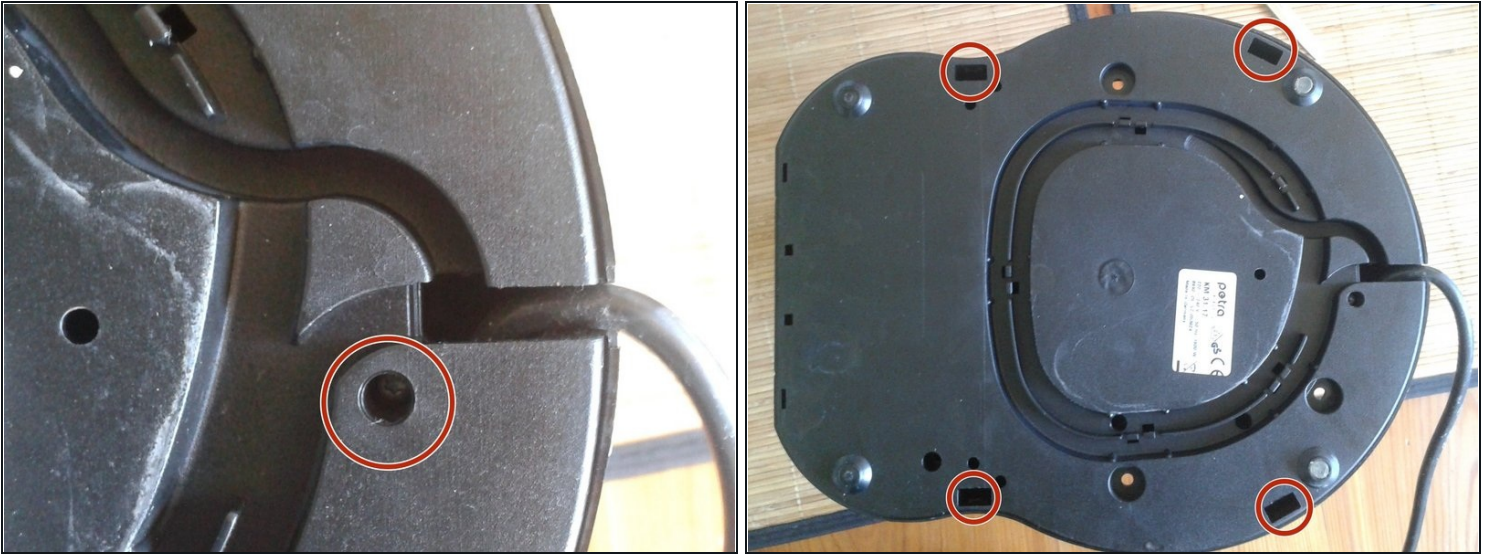
MKP Capacitor X2 0.68 microF 275 V AC (1)
MKP Capacitor X2 0.047 microF 275 V AC (1)

Step 1 — Replace Capacitors



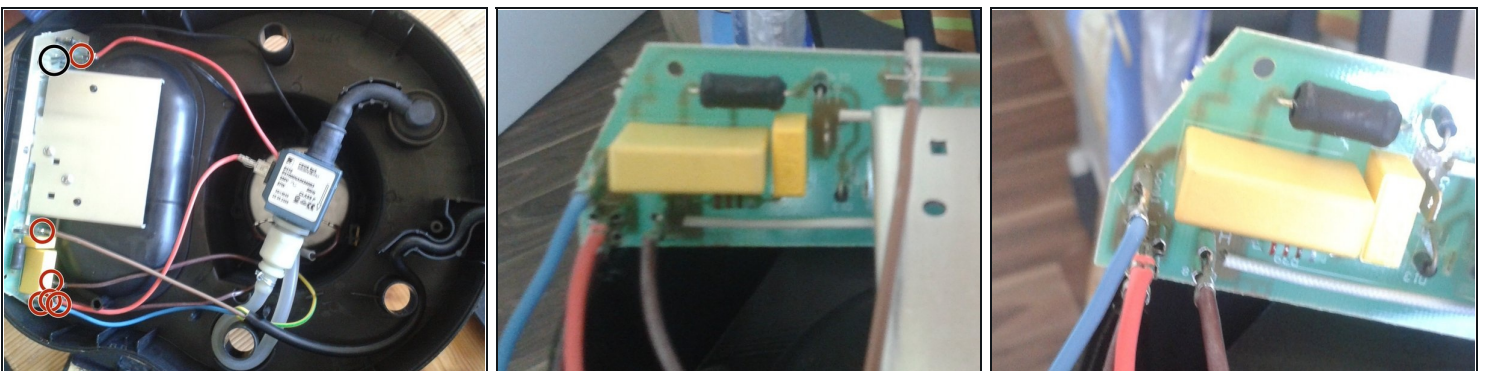
- Remove the plastic water tank
- Remove the iron sheet and the underlaying black spillover pan

Step 2 — Open



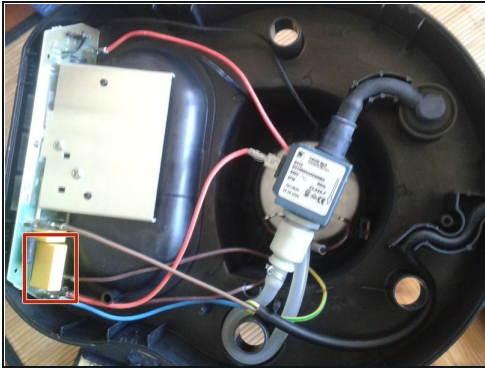
- Turn the machine upside down and lose the T10 screw right next to the power cord
- Lose the four clips on the side. Use a spudger or a flathead screwdriver to gently bend the little plastic clip on the outer side of the rectangular hole inwards. Use your other hand and a [plastic card](#) to lever off the coverage. Do this with all four holes.

Step 3 — Remove cords



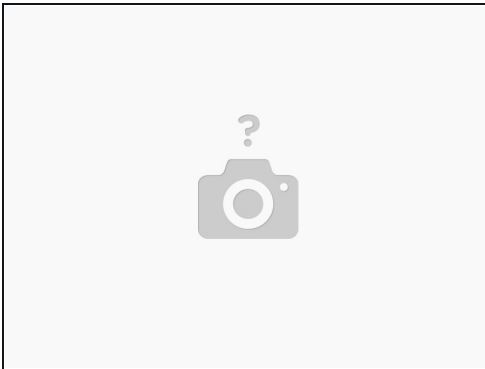
- Disconnect all cords from the circuit board besides the two black ones on the right (marked black on the first picture); these are soldered and therefore cannot be disconnected so easily.

Step 4 — Desoldering



- Desolder the big yellow 0.68 microf capacitor
- Solder in the replacement capacitor

Step 5 — (Optional) replace the other capacitors



- Sometimes the two smaller capacitors (0.047 microf) are also damaged. Test the machine after step four, if it doesn't properly work, replace these two as well.

To reassemble your device, follow these instructions in reverse order.