



# Logitech M205 Teardown

In this guide, you will find instructions on how to take apart a model 205 Logitech mouse.

Written By: Sydnee Rodriguez



# INTRODUCTION

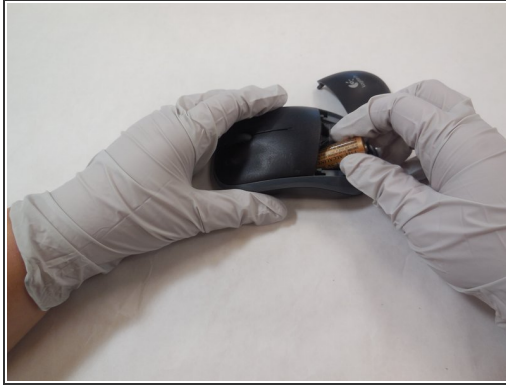
The Logitech Mouse, model 205, isn't as clear to take apart as later models. But once the steps are known, a teardown for this device is straightforward and requires only common tools. This guide will instruct the reader on how to take apart this particular model.




## TOOLS:

- [Phillips Screwdriver J000](#) (1)
  - [Metal Spudger](#) (1)
  - [Tweezers](#) (1)
-

## Step 1 — Remove the Battery



 Removing the battery ensures that when you get into the circuit board of the mouse, you will not be shocked by any energy coming from the batteries.

- To remove the battery, turn the mouse over onto its back and press the square button below the battery icon.
- Pressing this button should release the cover on the top of the mouse, allowing you to remove the battery.

## Step 2 — Uncover the Screws



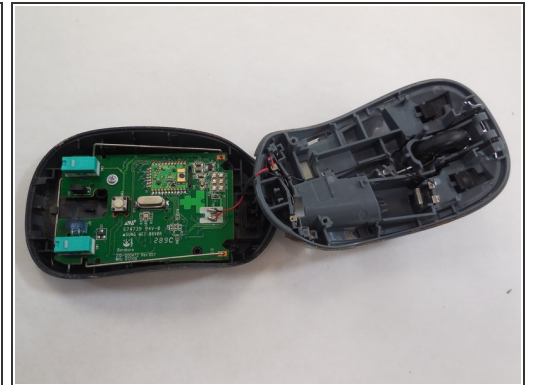
- Flip the mouse over onto its back.
- Using a metal spudger, scrape off the padding on the bottom two pads as shown.
- This will reveal a two holes, with a screw in each.

### Step 3 — Unscrew the Base



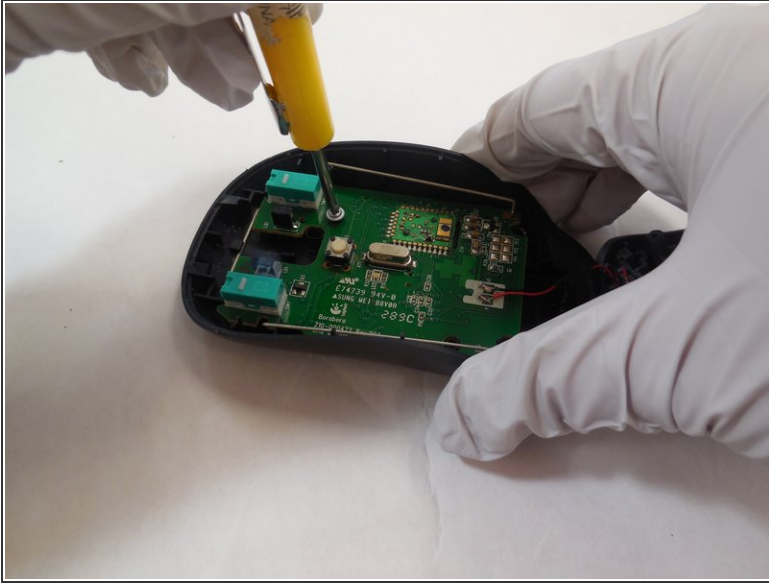
- Using a phillips head screwdriver (J000 in ifixit toolkit), unscrew the screws holding the base in place.

### Step 4 — Open the Mouse



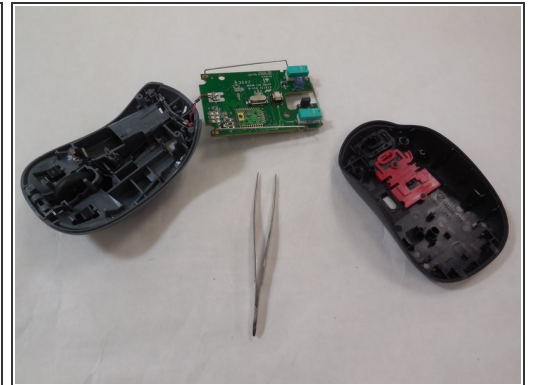
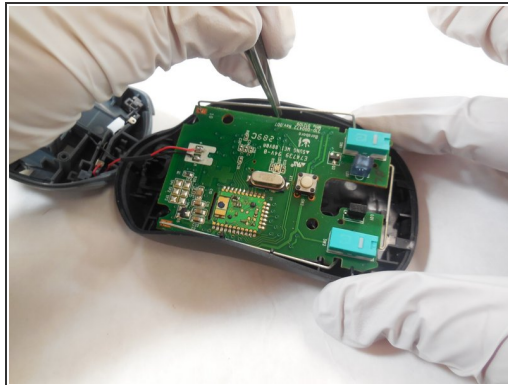
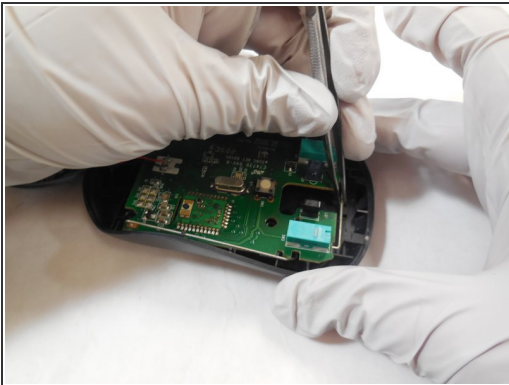
- Lift up the back side of the mouse, then gently slide the front towards the back.
  - ⚠ You can only lift a small amount because there are wires connecting the base and top.
  - ⚠ If you try to lift the front as well, then the plastic will snap. There are tabs holding the top in place, which can only be opened through sliding.
- After sliding, then the mouse will open as shown.
  - 🔍 There will still be wires connecting the two pieces.

## Step 5 — Unscrew the Circuit Board



- Using a phillps head screwdriver (head J000 in the ifixit toolkit), unscrew the circuit board from the mouse frame.

## Step 6 — Remove the Circuit Board



- Using the tweezers, gently pull the circuit board from the mouse. Hold the circuit board by the metal frame that surrounds it, as shown.

To reassemble your device, follow these instructions in reverse order.