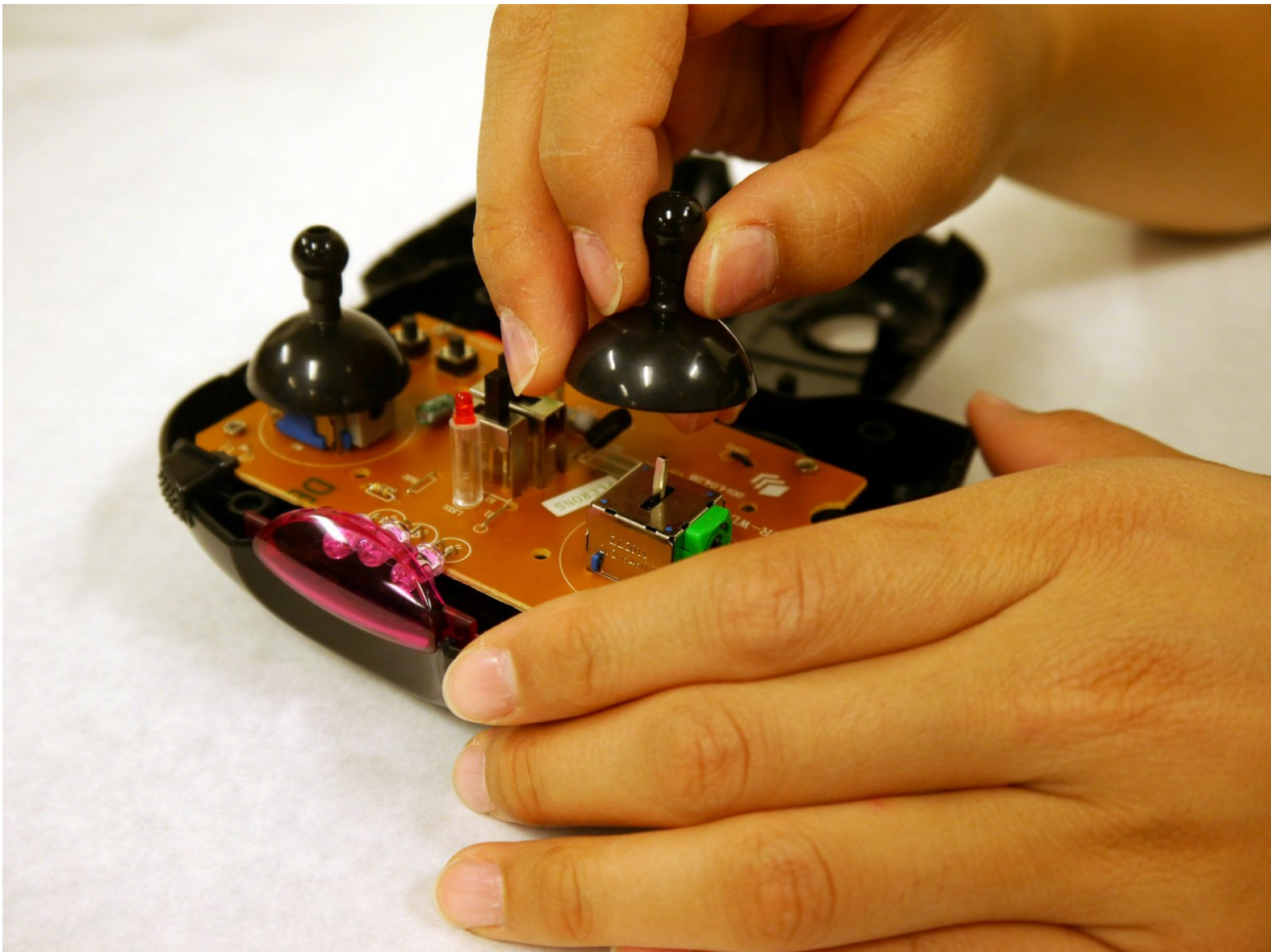




Propel Gyro-X Joysticks Replacement

Use this guide to replace the broken joysticks on your Propel Gyro-X remote.

Written By: Ashton Demaree



INTRODUCTION

This guide will help you to replace the joysticks in the remote controller for your Gyro-X. You may need to do this if you dropped the remote and broke or jammed the joysticks. The many screws holding the remote case together are set deep in the case, so you will need a long, narrow screw driver to remove them.



TOOLS:

- [Phillips #0 Screwdriver](#) (1)
-

Step 1 — Joysticks



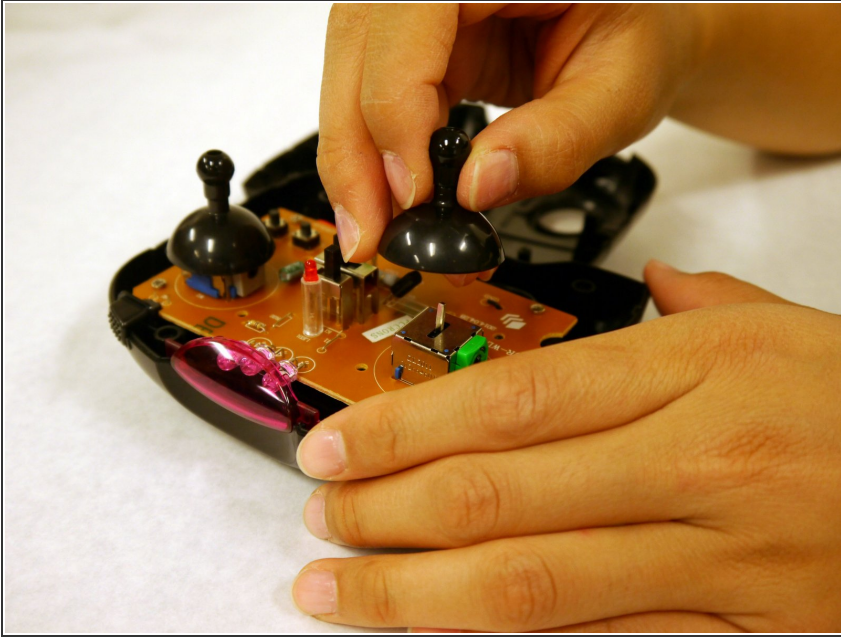
- Remove the six Phillips #0 screws from the back of the remote.

Step 2



- With the joysticks facing up, lift up the top of the remote casing to remove it.

Step 3



- While holding the remote down with one hand, pull the joystick up with the other hand to remove it.

To reassemble your device, follow these instructions in reverse order.