



Pentax PZ-10 Back Cover Locking Switch Spring Replacement

This guide will show the 4 steps to accessing the back cover locking switch spring for replacement.

Written By: Ryan Su



INTRODUCTION

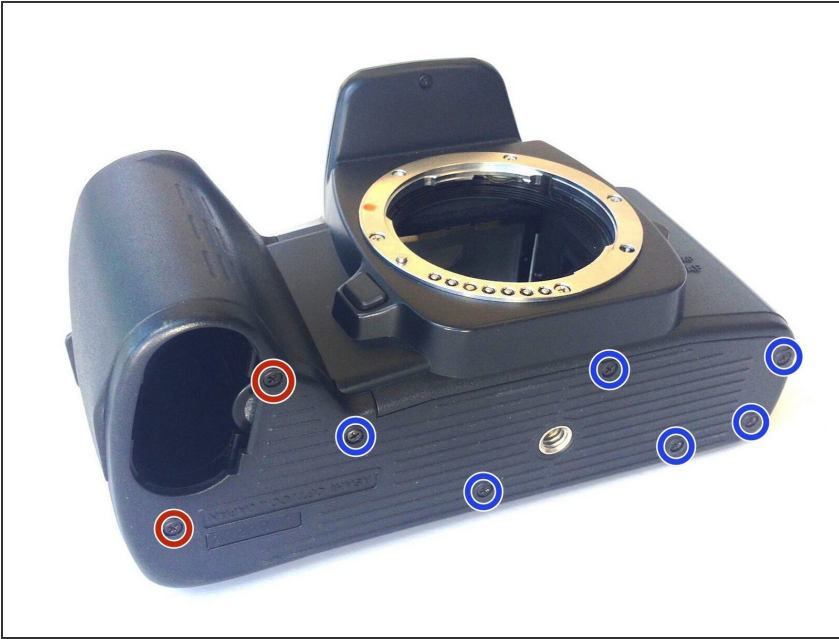
If the back cover of the Pentax PZ-10 won't lock in place, the spring that holds the door in place may need to be replaced.



TOOLS:

- [iFixit Opening Tools](#) (1)
 - [64 Bit Driver Kit](#) (1)
-

Step 1 — Removing the Bottom Cover



- With the lens face up and the bottom panel of the camera facing you, remove the two 7mm screws on the left using the J0 screwdriver.
- Remove the six 4.3mm screws in the middle and right of the panel using the J0 screwdriver.
- Pull off the bottom casing to remove.

Step 2 — Removing Bottom Casing



- With the screws removed, the bottom casing should come off very easily by pulling on the casing.

Step 3 — Removing the Back Cover



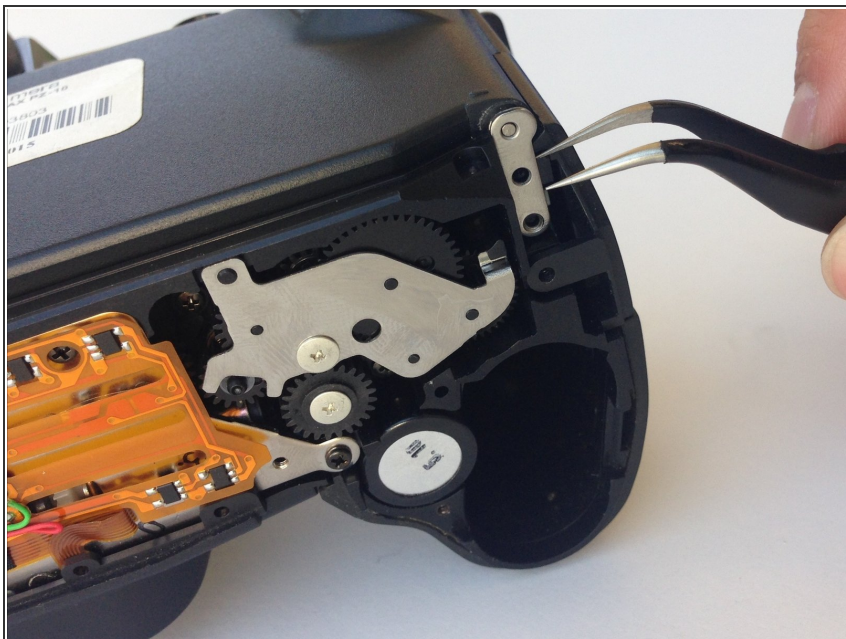
- ❗ Place the camera on its side so the lens is facing left.
- Press down on the locking switch on the side panel facing you.

Step 4



- With the door unlocked, rotate the device to access the bottom.

Step 5



- Using a pair of tweezers, gently remove the metal tab securing the back door axle.

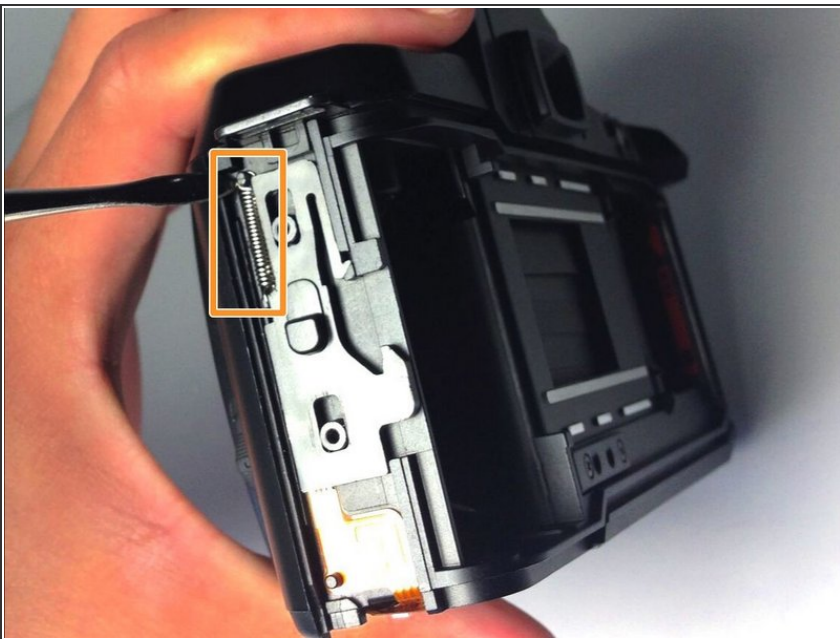
⚠ The door will come loose at this point, watch for any loose parts that may also come out.

Step 6 — Removing the Side Panel




- Once the back cover is fully removed, remove the two 4.35mm screws attaching the cover of the unlocking switch, and remove the plate.

Step 7 — Removing the Spring



- Locate the spring at the upper left corner of the face, and pull the rings of the spring off of the pins to

remove it using plastic opening tools.

 You are now ready to replace the spring.

To reassemble your device, follow these instructions in reverse order.