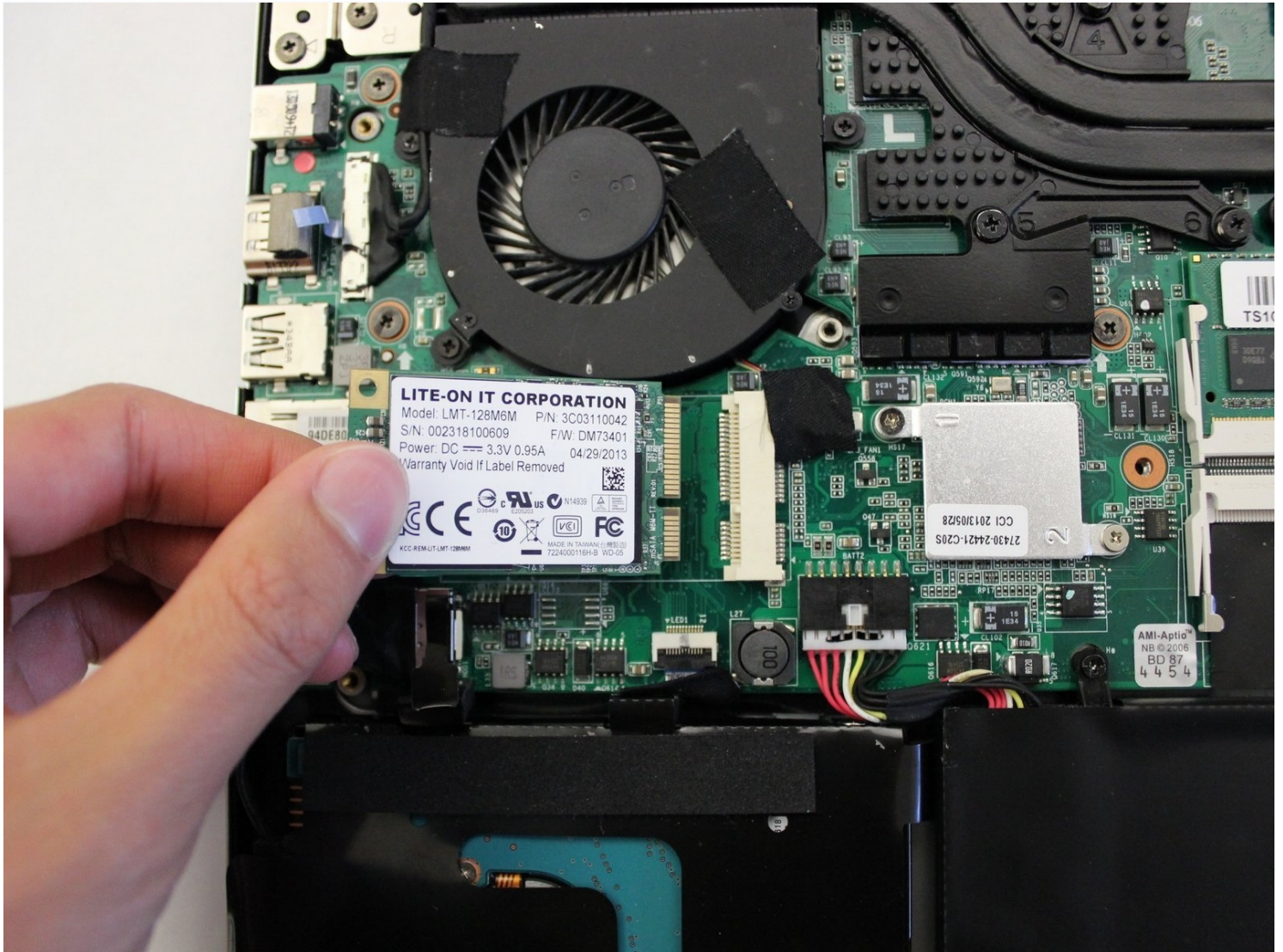




# Gigabyte P34G Solid State Drive Replacement

The solid state drive stores some of the...

Written By: yeunghayden



# INTRODUCTION

The solid state drive stores some of the computer's files and has limited space. Replacement of the solid state drive is necessary if it is broken or there is no space left.

Make sure you are grounded before starting. To ground yourself, simply touch a metal object that is in contact with the floor for a few seconds.

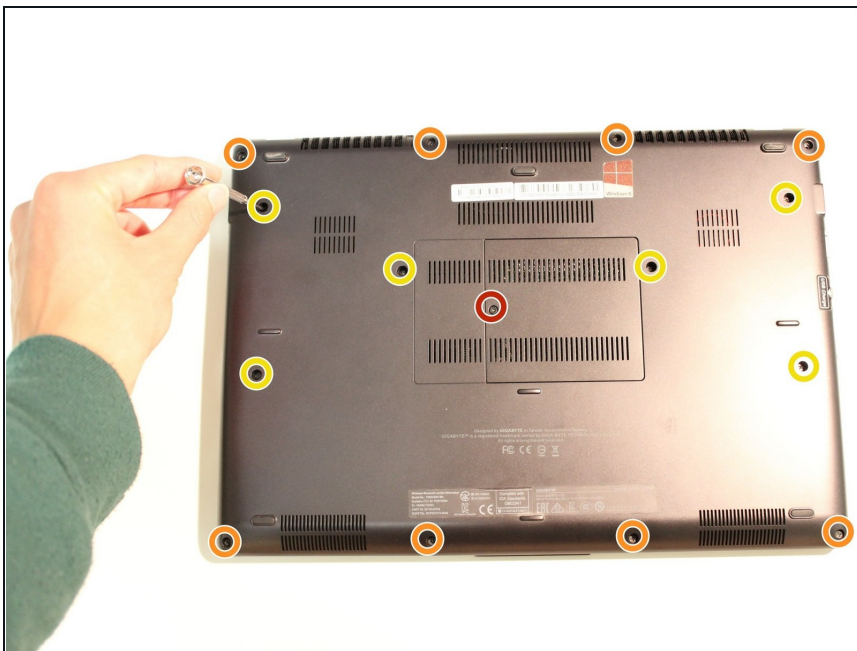
## TOOLS:

Phillips #0 Screwdriver (1)

## PARTS:

Compatible Solid State Drive (1)

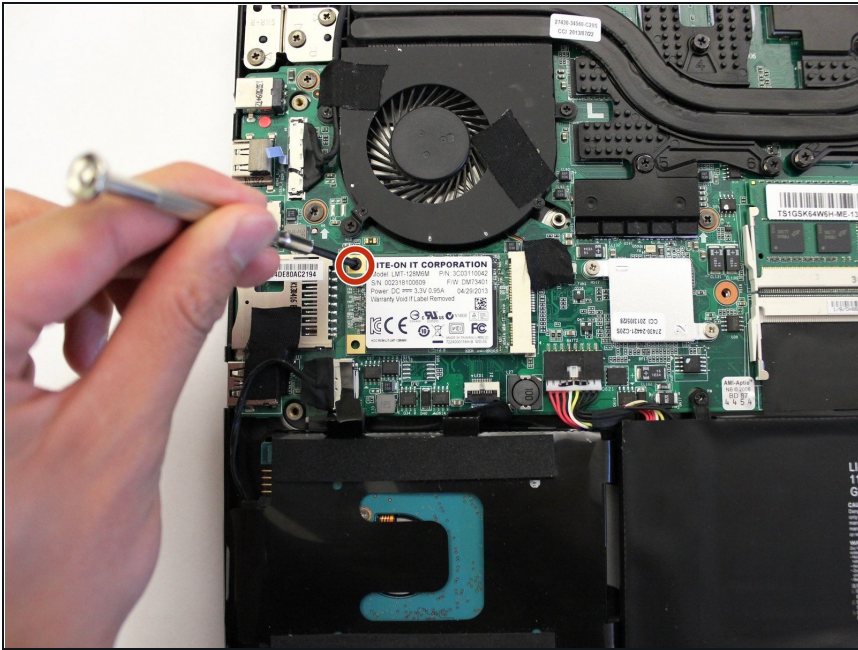
### Step 1 — Solid State Drive



- Remove all 15 marked screws on the underside of the laptop using a #0 screwdriver.
- ① There are three different sized screws.
  - x1 9.8mm Screw
  - x8 5.6mm Screws
  - x6 5.0mm Screws
- ☑ Divide the screws by size and save them in a safe space for reassembly later.

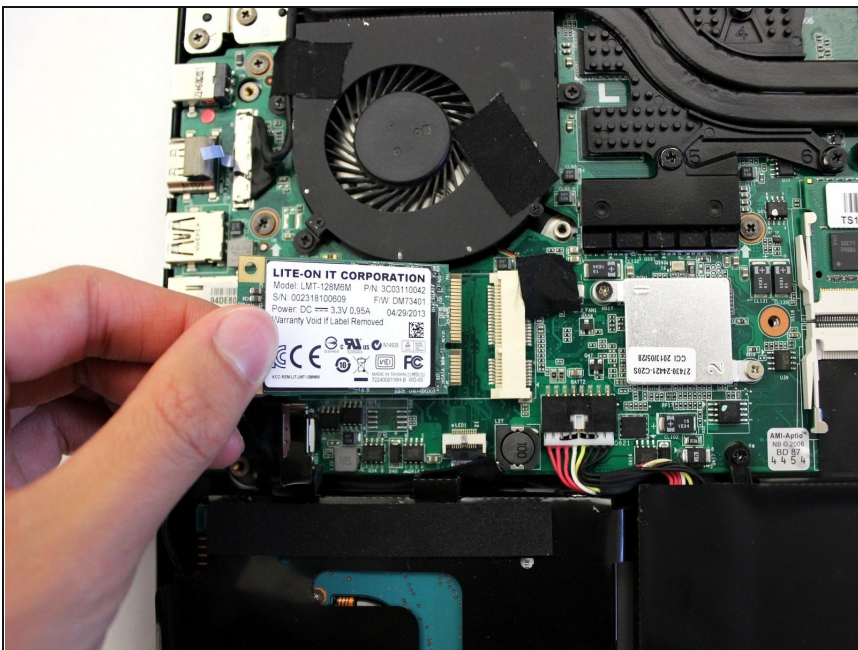


## Step 2



- Unscrew the marked 4.5mm screw with a #0 screwdriver.
- ☑ Set the screw aside to use for reassembly after replacing the solid state drive.

## Step 3



- Carefully pull the solid state drive in the direction shown to disconnect it from the port.

---

To reassemble your device, follow these instructions in reverse order.

