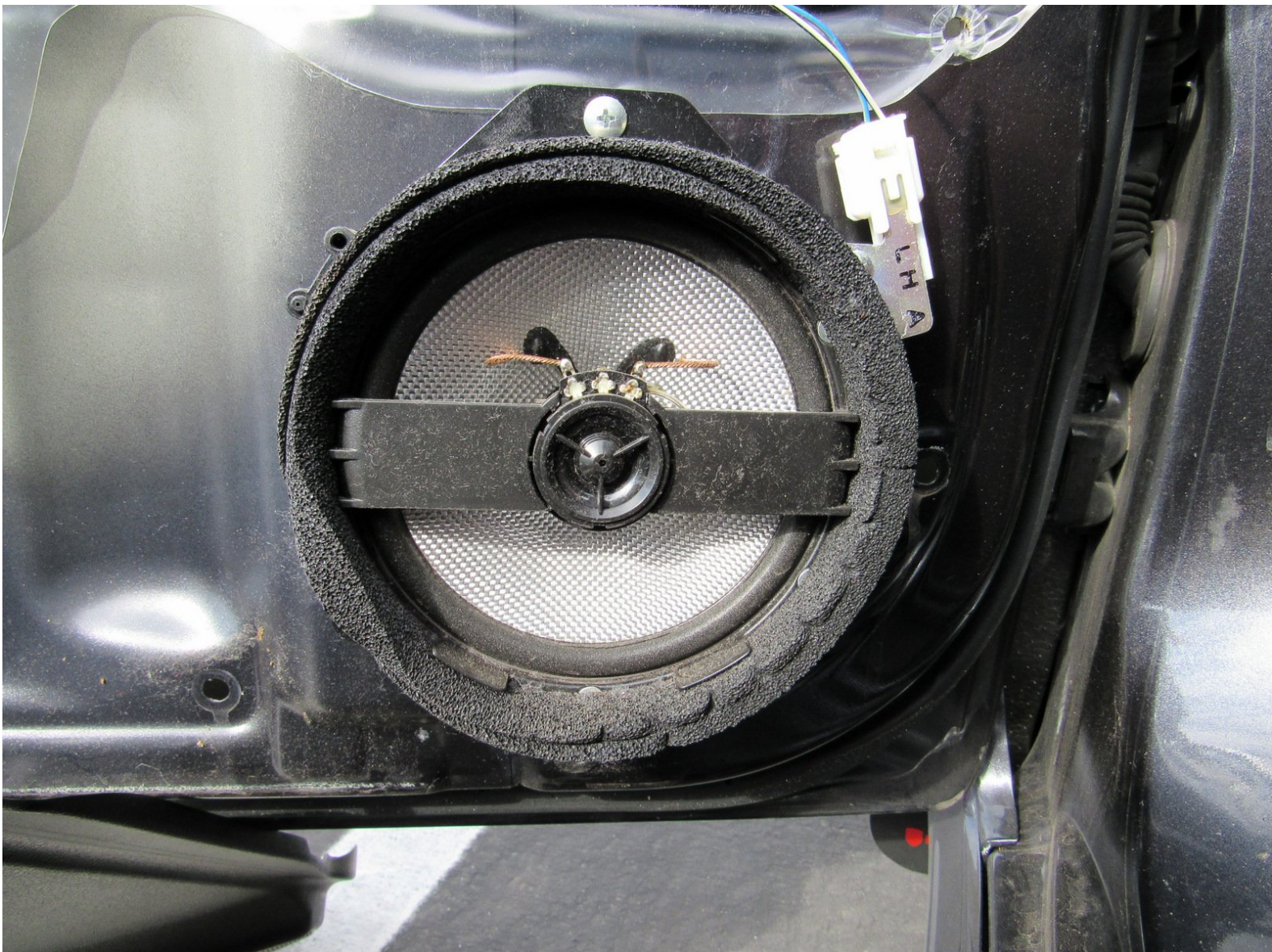




2009 Subaru Impreza WRX Front Speaker Replacement

This guide shows how to replace the front...

Written By: Jared Spadaro



INTRODUCTION

This guide shows how to replace the front speaker of the 2009 Subaru Impreza WRX. It can be used to replace a broken speaker, or upgrade an old speaker with a better one. This should be done with a disconnected car battery to ensure safety.



TOOLS:

- [Phillips #0 Screwdriver](#) (1)
 - [6-in-1 Screwdriver](#) (1)
 - [Small Needle Nose Pliers](#) (1)
-

Step 1 — Front Door Panel



- Pry up the plastic tab from inside the handle located on the front door armrest.

Step 2



- Pry up the plastic tab from inside the door handle housing.

Step 3



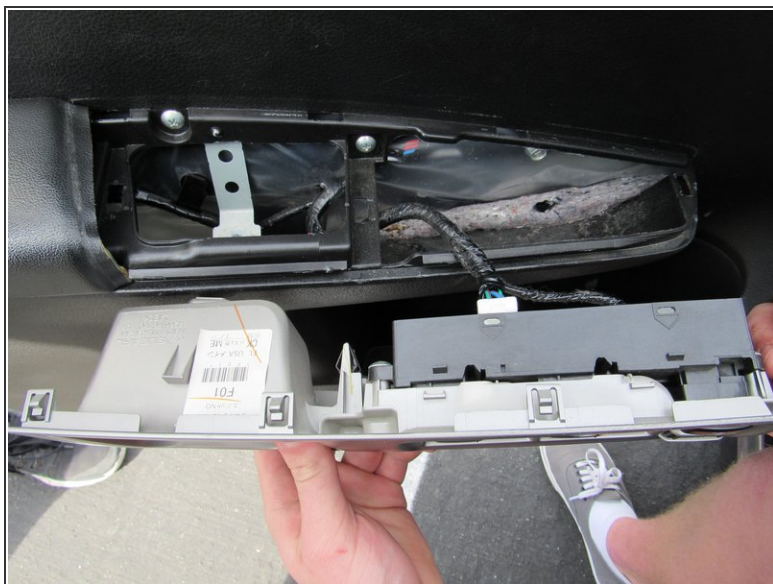
- Use your Phillips screwdriver to unscrew the 8x3/4" Phillips screw by the upper door handle.
- Unscrew the second 8x3/4" Phillips screw located inside the lower door handle on the door's armrest.

Step 4



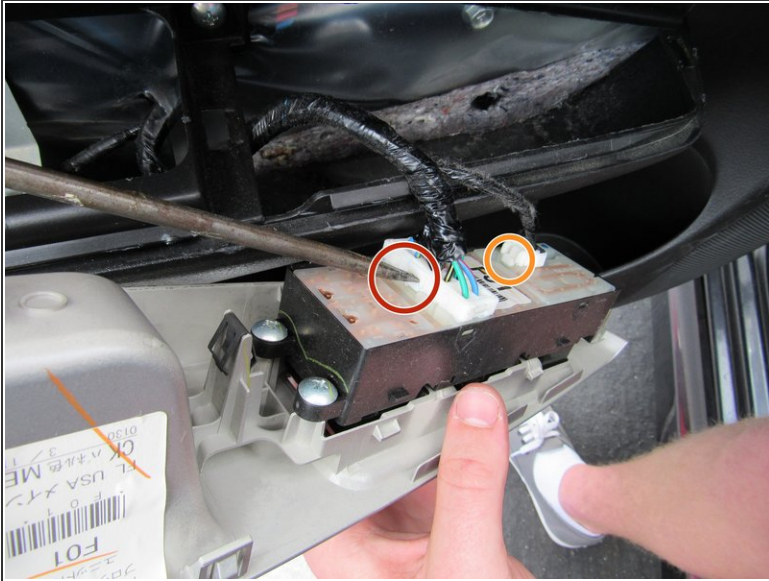
- Pry off the entire door speaker and its housing located inside of the mirror.
- Using your flathead screwdriver, pry up the latch connecting the two white cords and disconnect the speaker.

Step 5



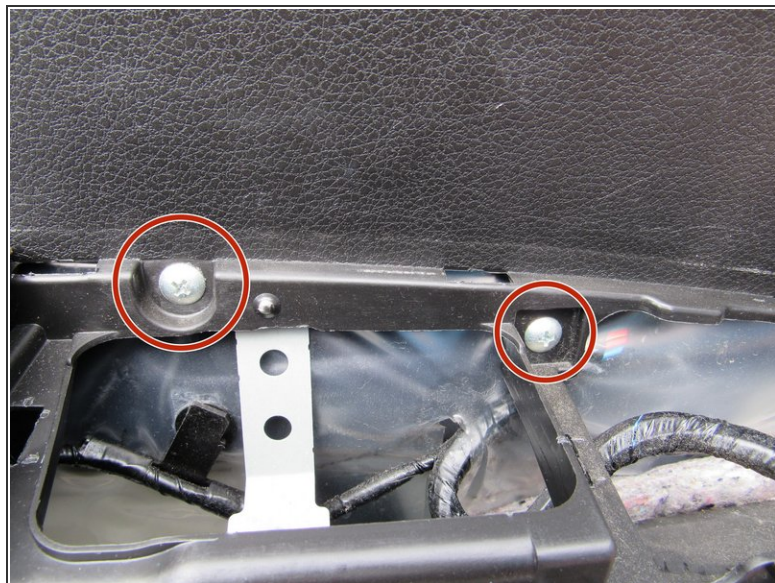
- Using your flathead screwdriver, pry the middle plastic door piece away from the armrest.

Step 6



- Using your flathead screwdriver, press the white tab on the side of the larger cord bundle connecting the assembly.
 - The larger cord bundle now can be pulled out.
 - Press the white tab on the smaller cord bundle and disconnect the smaller cord bundle from the assembly.
- i** Take note of the two screws that are now visible in the middle of the door panel.

Step 7



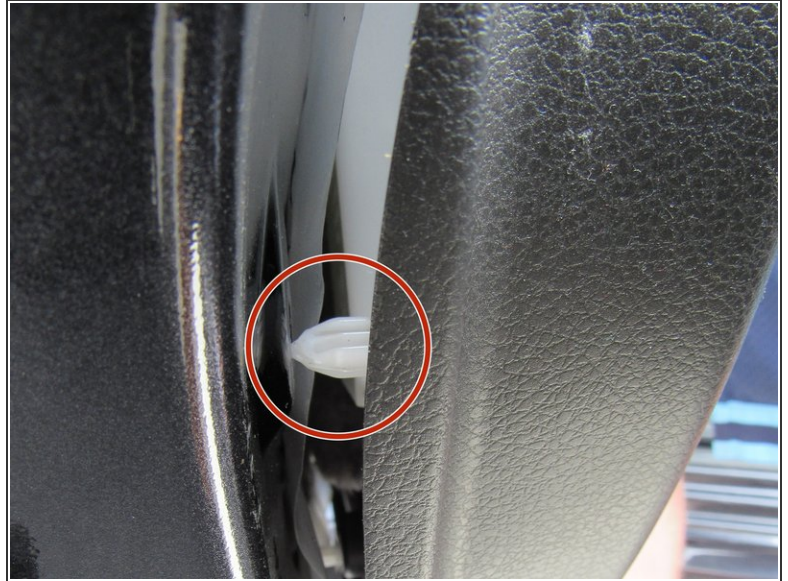
- Unscrew both 8x3/4" Phillips screws from the middle of the door panel using your Phillips screwdriver.

Step 8



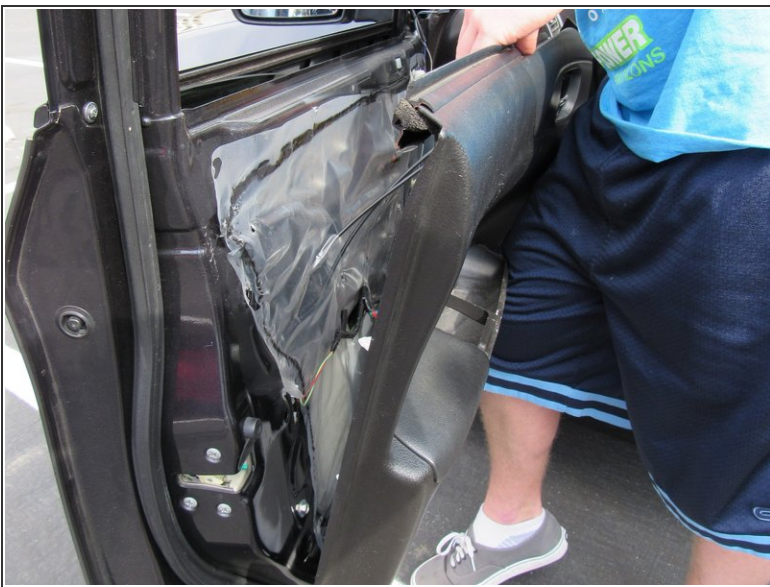
- Pry the left side of the door panel away from the door using a flathead screwdriver.
 - It may be easiest to start by prying away where the red circle is located.

Step 9



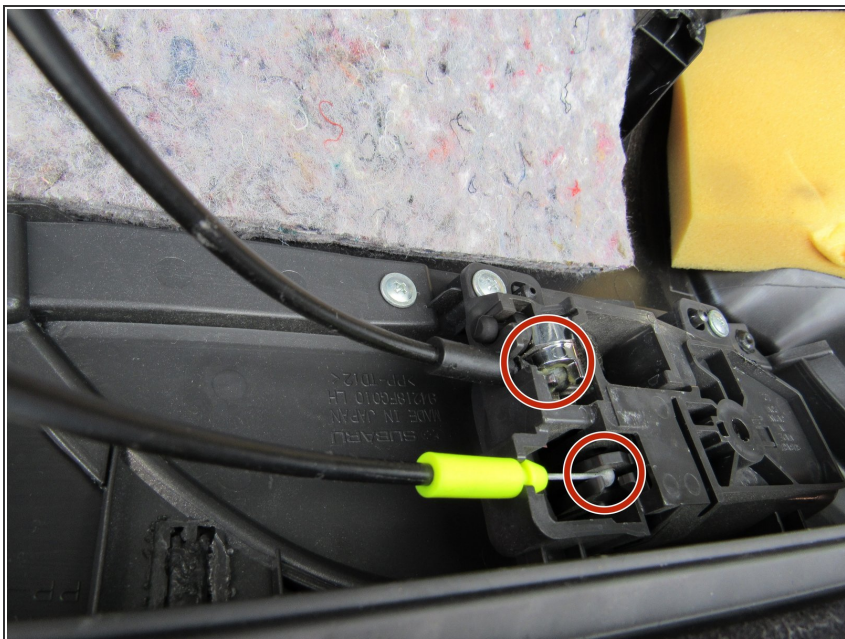
- Using your hands now, pry the door panel away from the door.
- You will hear a series of pops when the white tabs disconnect from the door.

Step 10



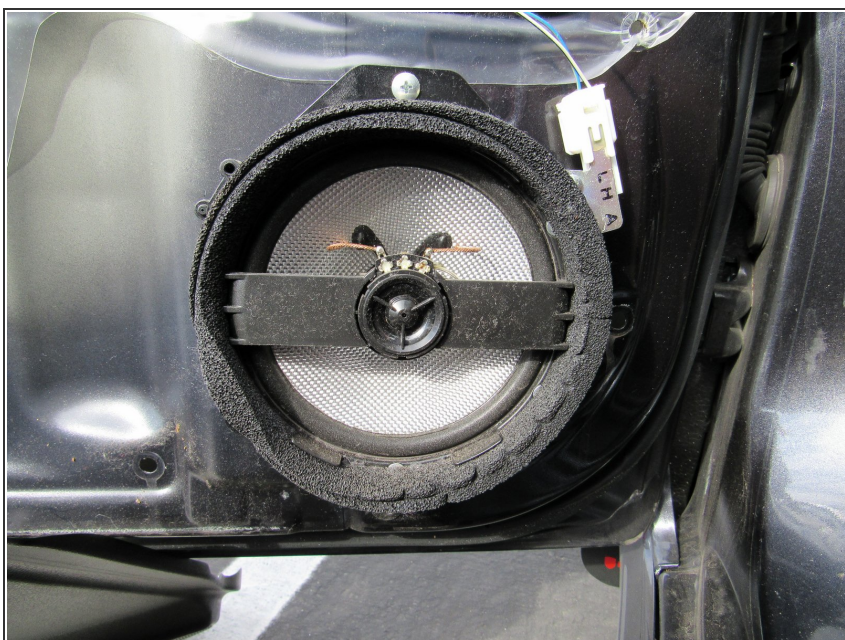
- Finish pulling the door off of the frame, now that all the clips have been disconnected.
- ⓘ Pull the door from the top, not the bottom or sides.

Step 11



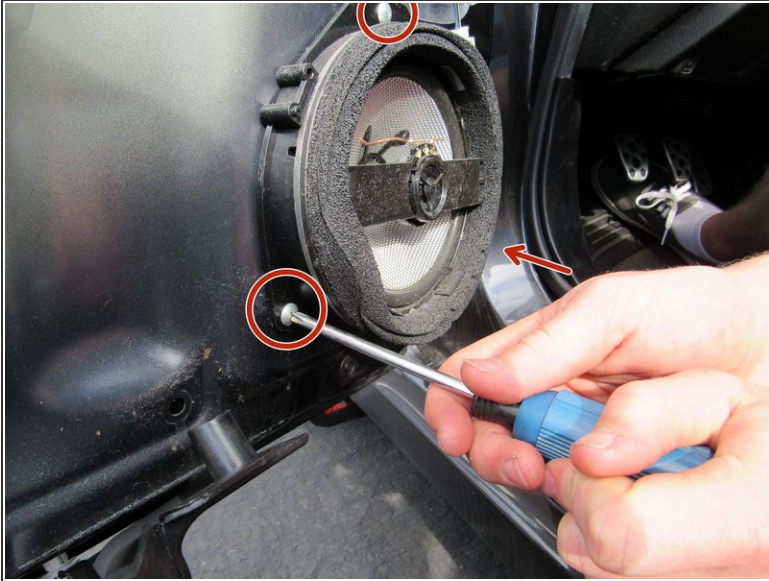
- Disconnect the final two power window cables that connect the door panel to the door frame by pulling both out of their sockets.
- Congratulations! You are now done.

Step 12 — Front Speaker



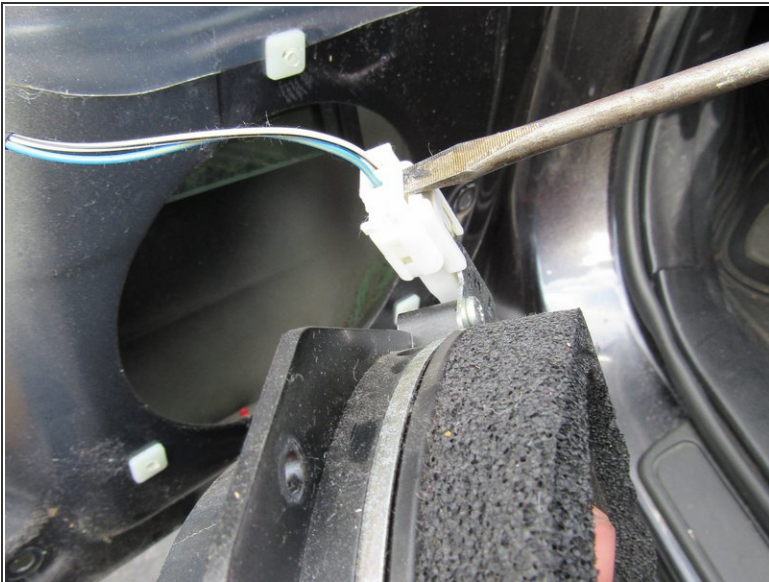
- This is how the speaker will look when the inside of the door is removed (refer to front door removal guide for more info).

Step 13



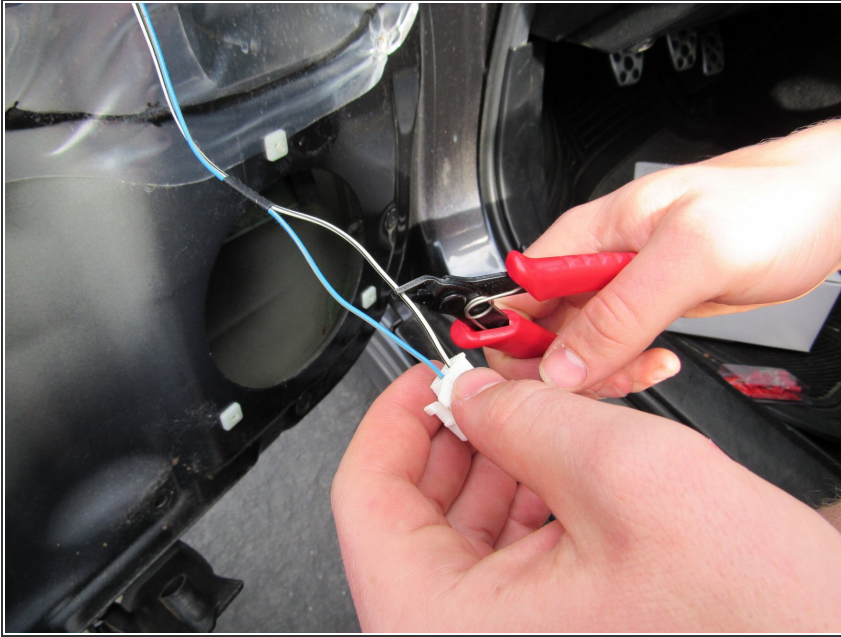
- There will be three 8x3/4" Phillips screws (the third screw is indicated by the arrow; you can't see the screw in the picture) keeping the speaker in place. Use a #0 Phillips screwdriver to remove them.

Step 14



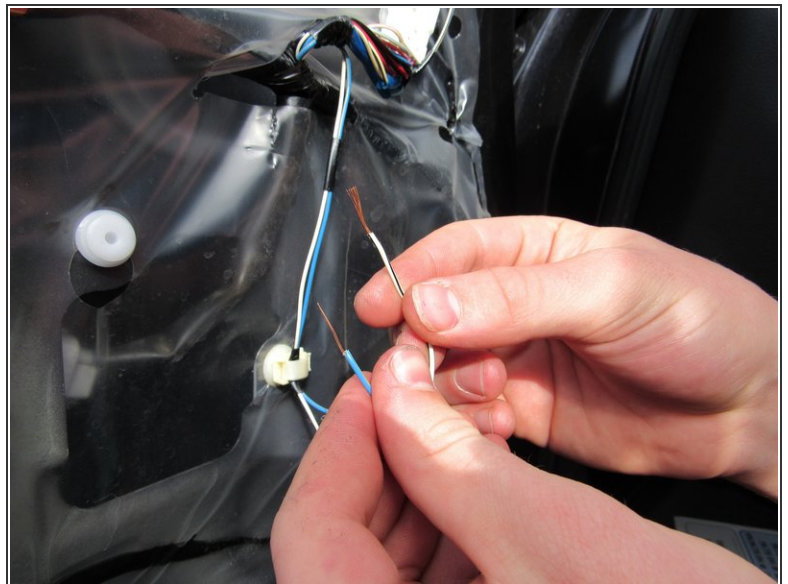
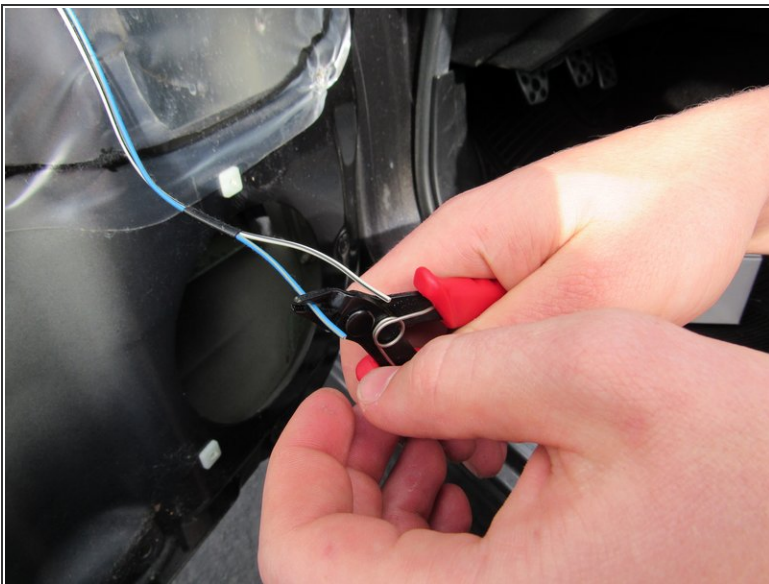
- There will be a plastic adapter connecting wires to the speaker. To separate the adapter from the speaker, use a flathead screwdriver or spudger to pry the adapter off.

Step 15



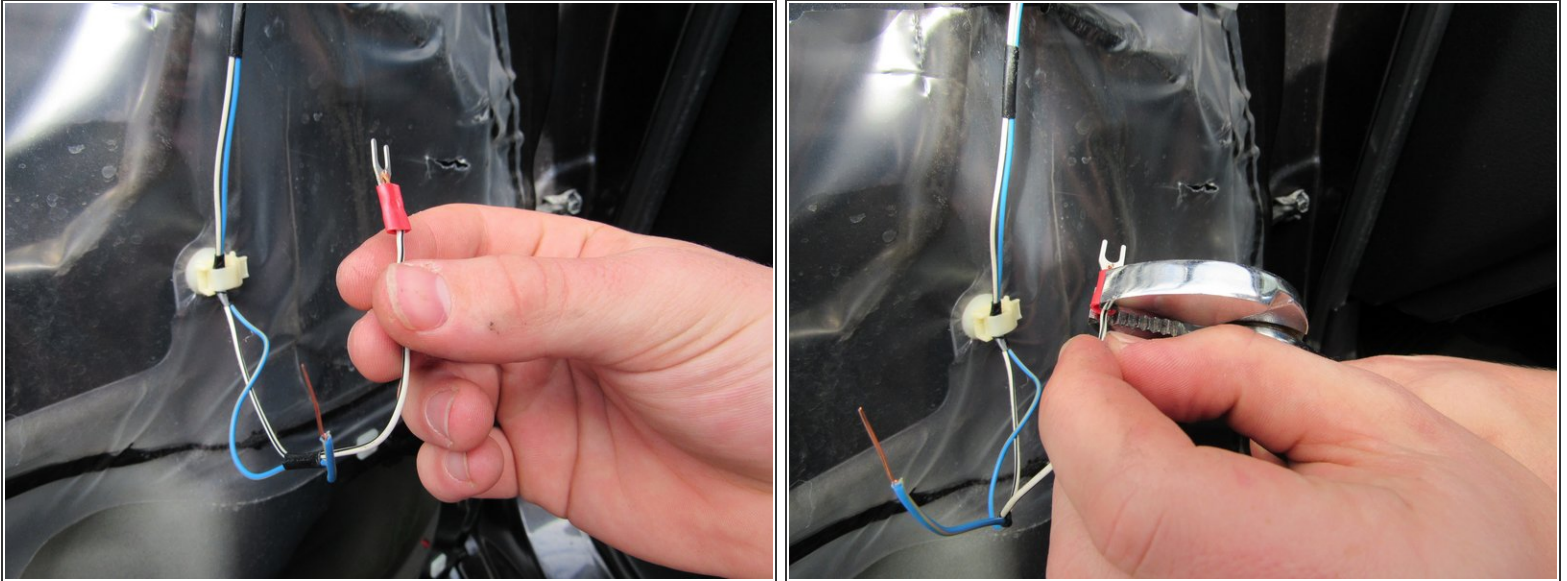
- Remove the plastic adapter from the wiring using wire cutters as shown.

Step 16



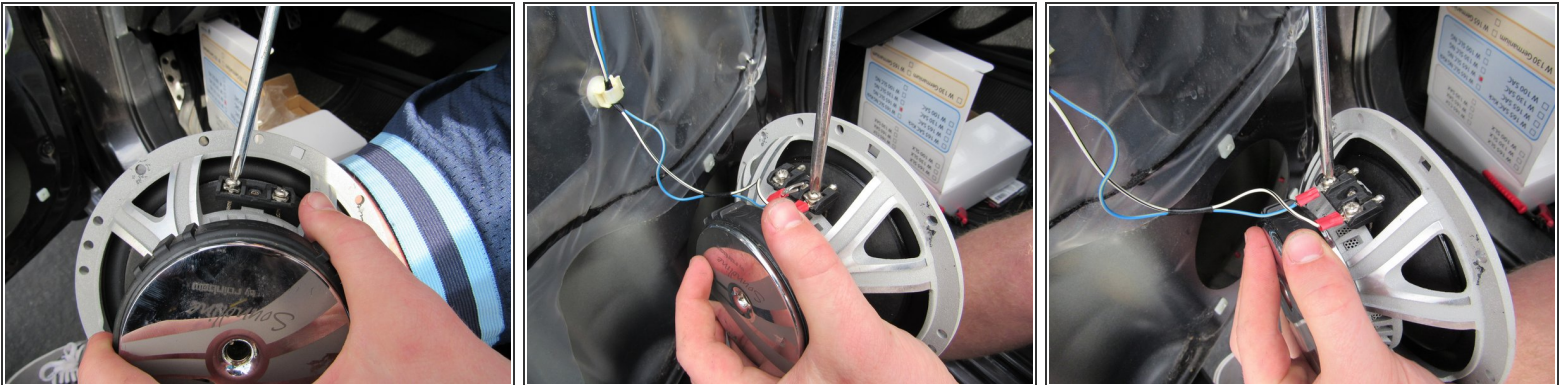
- Using wire strippers, strip the two wires shown (blue and white, respectively) at about 1 inch from the end.

Step 17



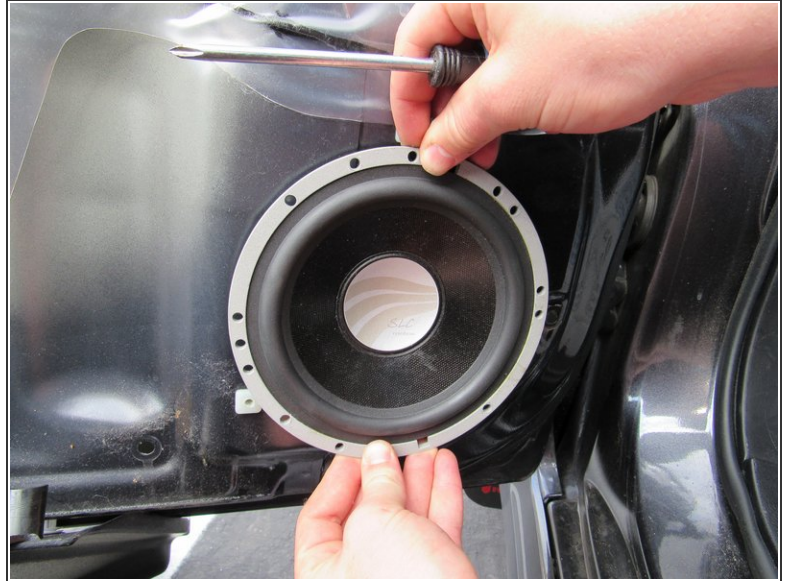
- Using pliers, attach a special adapter piece to both wires as shown. Simply insert the wire into the plastic cavity and apply pressure.

Step 18



- Locate the part of your new speaker which has two 8x3/4" Phillips screws in line. Unscrew these screws slightly to allow the adapter pieces to fit under them, then screw them back in to secure the wires.
- ⓘ Make sure the wiring connector is fully tightened under screw.

Step 19



- The final step is to place the new speaker, and tighten the same three screws as before to secure it.
- ⓘ If you're having problems with your new speaker, refer to the troubleshooting guide [here](#).

To reassemble your device, follow these instructions in reverse order.