



# Skil 88 Motor Housing Replacement

Removing and replacing the motor housing.

Written By: Matt



## INTRODUCTION

After deciding that the motor is functional and the power is indeed reaching the motor in the trigger housing, the motor housing will have to be removed and maybe replaced.

---

### TOOLS:

- [.25" Socket Wrench](#) (1)
  - [Flathead Screwdriver](#) (1)
  - [Tweezers](#) (1)
-

## Step 1 — Disassembling Skil 88 Front Housing



- On the front of the drill, remove the three 2" flathead screws connecting the front housing to the rear housing.

## Step 2



- Pull the front housing apart from the rear.

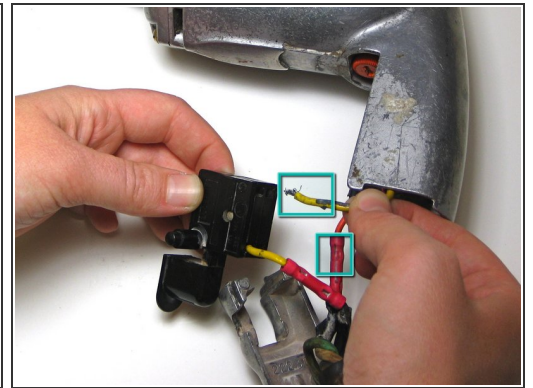
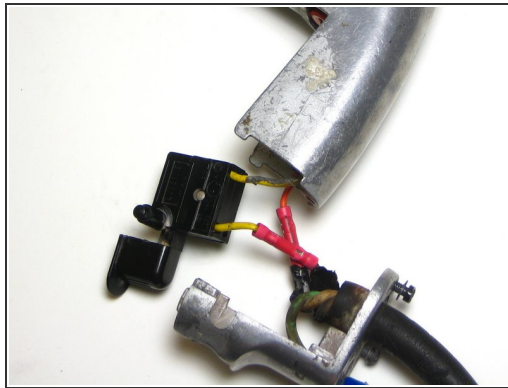
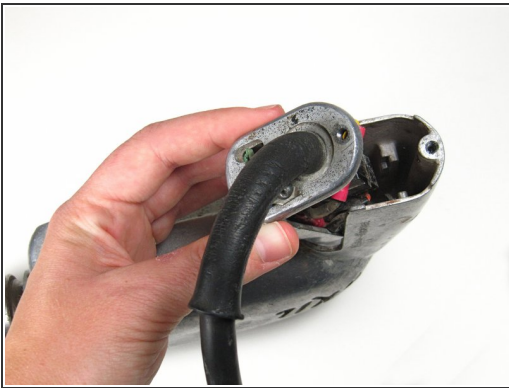
⚠ The motor and gears might fall out when you are pulling it apart.

### Step 3 — Trigger Housing



- Use the socket wrench to remove the 0.5" length screw from the bottom of the handle.

### Step 4



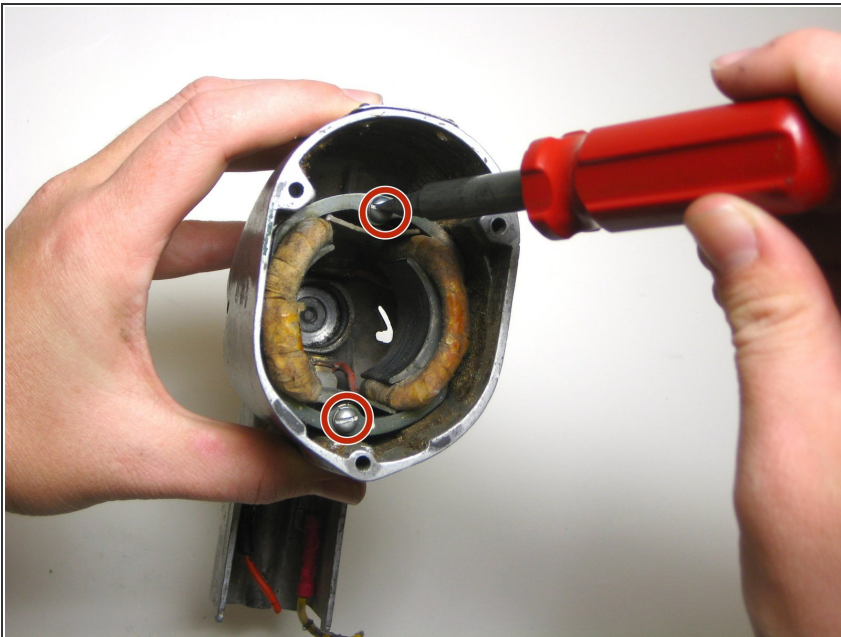
- Separate the cord from the handle.

## Step 5 — Motor Housing



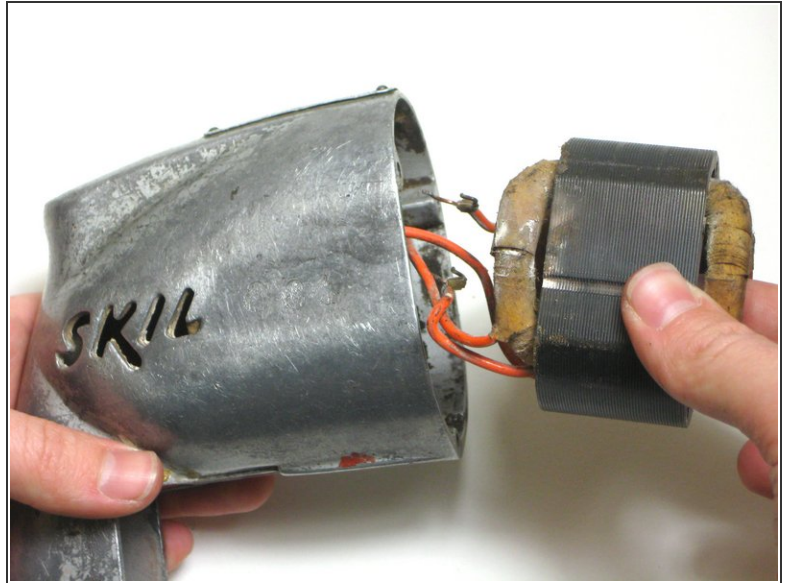
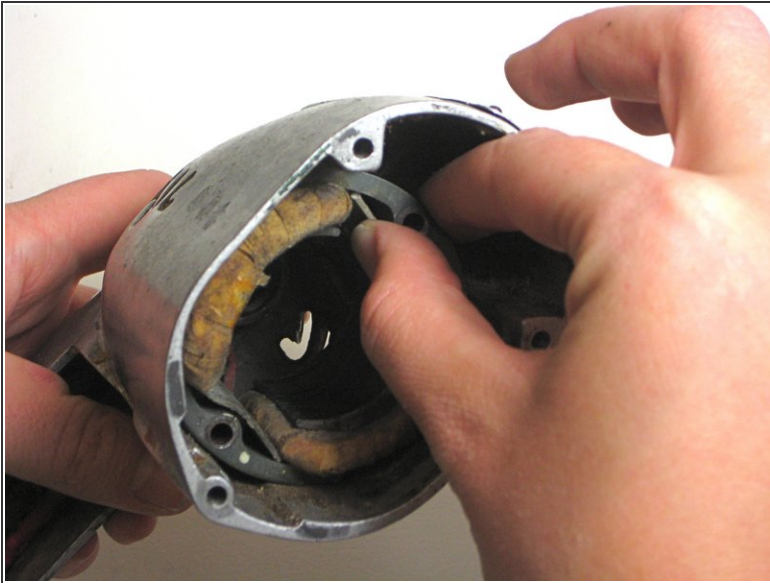
- Remove the inner divider.

## Step 6



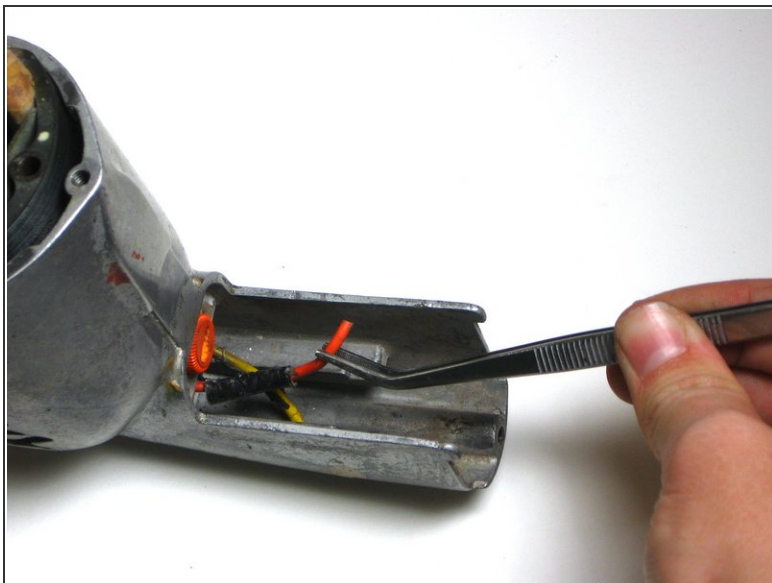
- Remove the two 1" flathead screws located at the top and bottom of the motor housing.

## Step 7



- Pull the motor housing out.
- ⓘ The wires from the trigger housing should follow the motor housing.

## Step 8



- After you have placed the motor housing back into the drill during reassembly, thread the wires down to the handle using tweezers.
- Plug the forked wire into the socket at the back of the motor housing using tweezers.

To continue reassembly, simply follow the guide backwards starting at step 2.