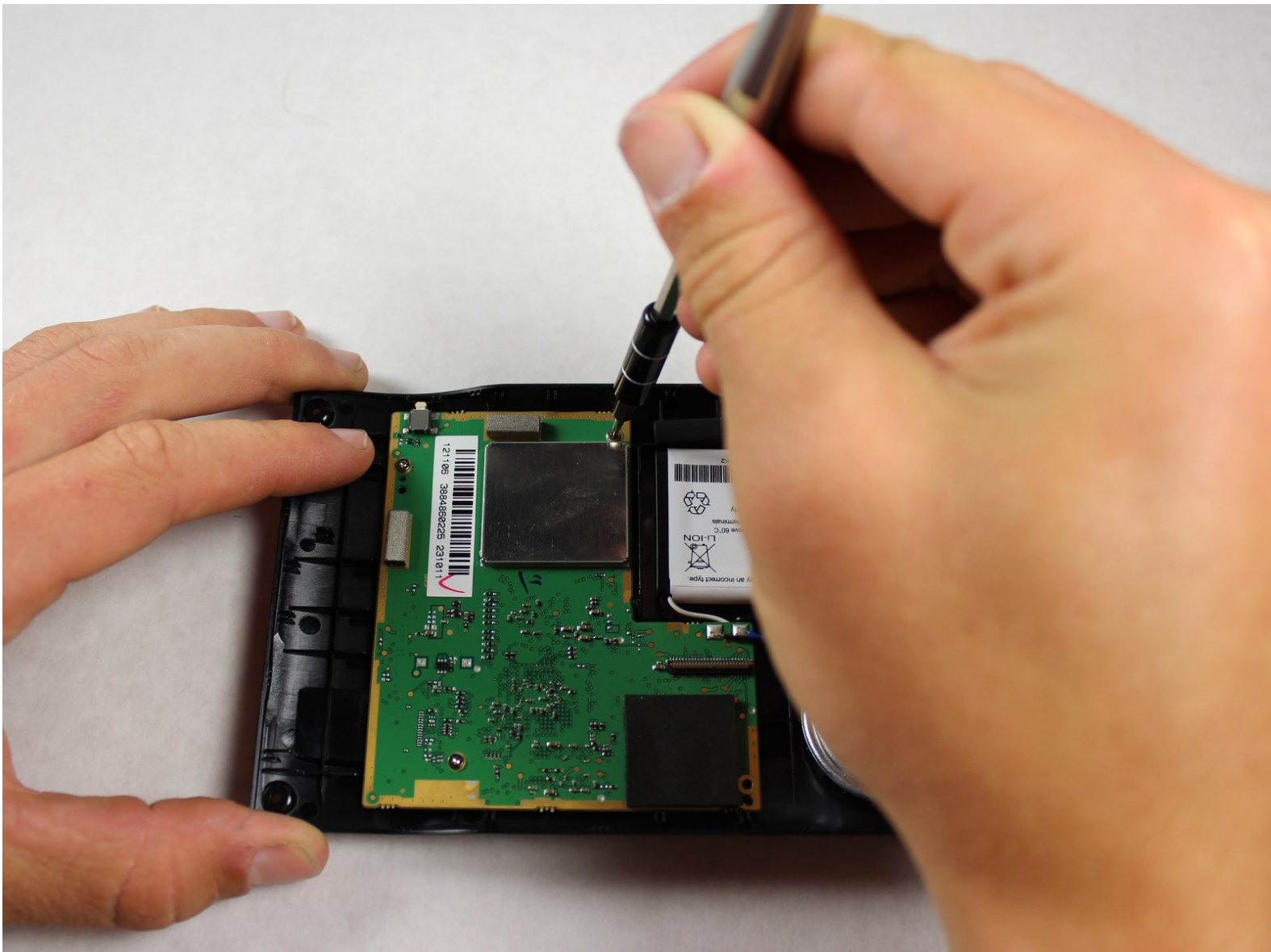




Garmin Nuvi 65LM Motherboard Replacement

This guide will show you how to replace the motherboard of your Nuvi 65LM.

Written By: Patrick Beahan



INTRODUCTION

A faulty motherboard can be easily replaced following the steps of this guide. It is recommended to have had some experience soldering before attempting this replacement. To install the new motherboard, follow the steps of this guide in reverse order.



TOOLS:

- [T5 Torx Screwdriver](#) (1)
- [iFixit Opening Tools](#) (1)
- [Soldering Iron](#) (1)



PARTS:

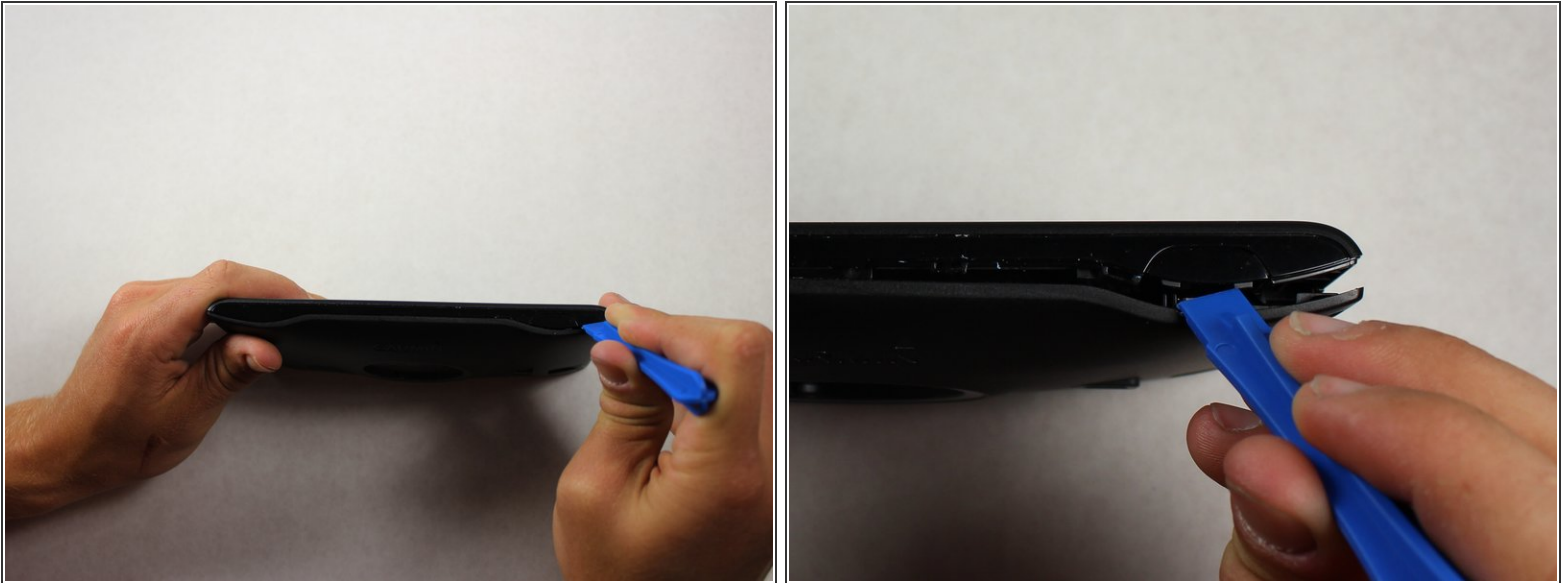
- [A New Garmin nuvi 65LM Motherboard](#) (1)


Step 1 — Plastic device casing



- Place the device on a flat surface with the screen facing down.
- Remove the four 4.80 mm T5 screws on the corners of the device with a T5 Torx screwdriver.

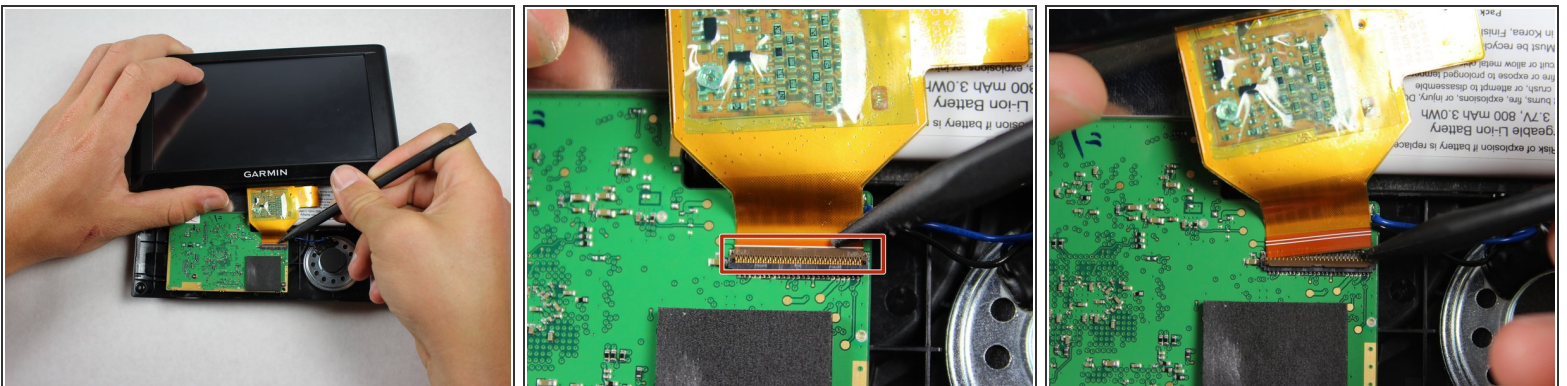
Step 2



 There is a ribbon cable that will still connect the front and back panels once they are pried part.

- Use the plastic opening tool to gently pry apart the front and back casing panels. Repeat this at multiple locations around the edge of the device. You should hear the clips that hold the front and back together pop apart.
- Once there is a large gap between the from and back casing panels, use your hands to separate the two halves.

Step 3



- Use a spudger to pop up the ZIF connector tab that fastens the ribbon cable to the motherboard.
- Gently pull the front panel away and set it on your flat work surface.

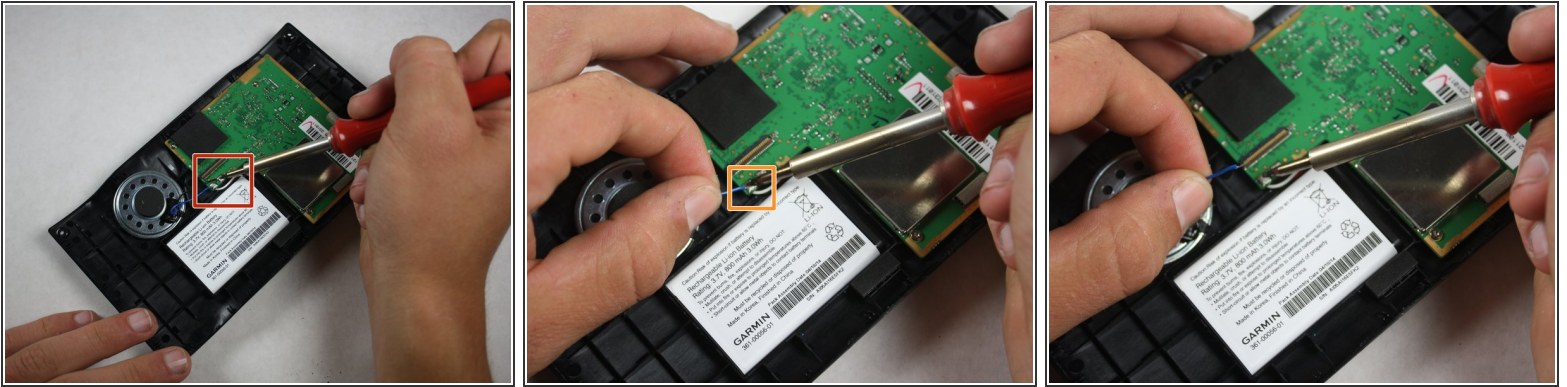
This document was generated on 2020-11-28 04:33:56 AM (MST).


Step 4 — Motherboard




- Make sure the GPS is laying on a flat surface with the open side showing so that the motherboard is facing you.

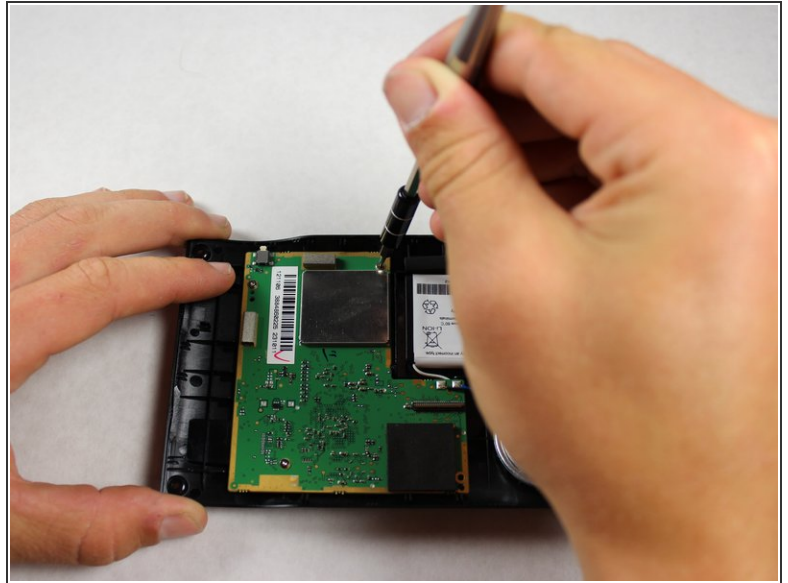
Step 5



 This step requires soldering. If you are new to soldering, reference the [Soldering Section](#) of iFixit's [Device Skills Page](#) for helpful information on soldering.

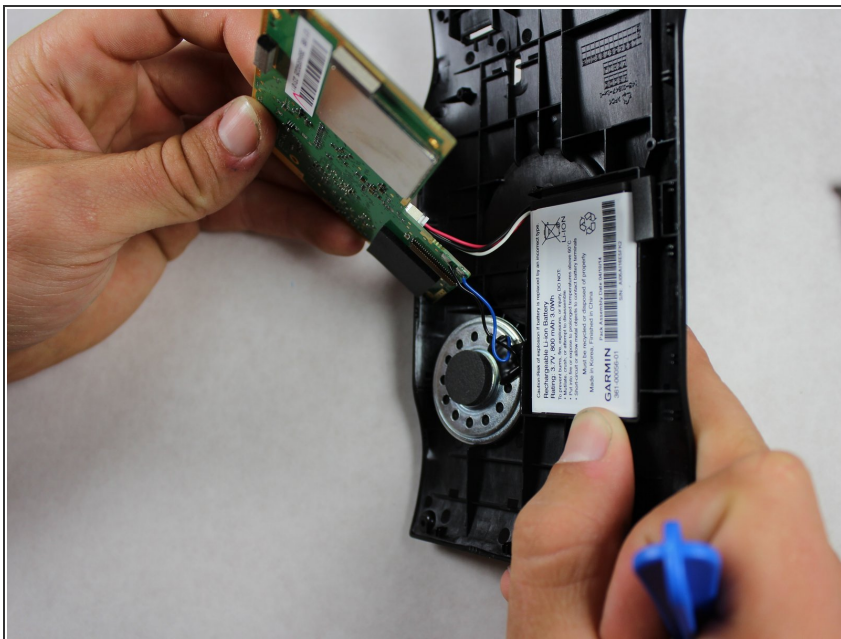
- Disconnect the speaker wires by desoldering them from the terminals on the motherboard.
- Plug in the soldering station and give it at least 5 minutes to heat up.
 -  The soldering iron and molten solder are very hot and can burn you!
- Touch the tip of the soldering iron to each terminal until the solder begins to melt.
- Once the solder melts, gently pull the wire away from its connection to the terminal with your hands.

Step 6



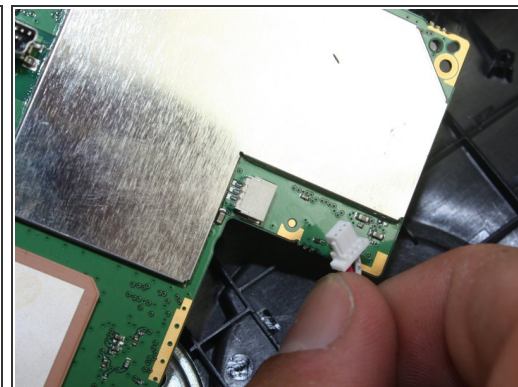
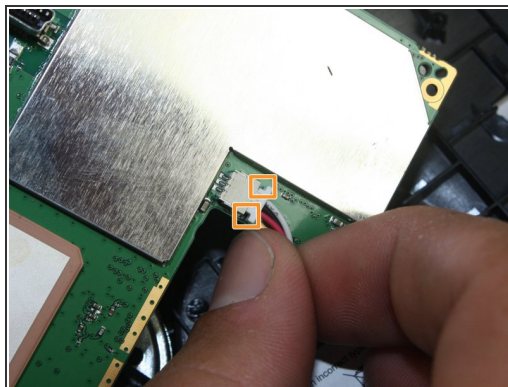
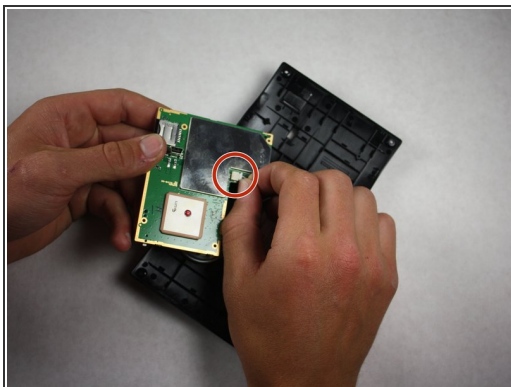
- Unscrew the four, marked 4.00 mm T5 screws with the T5 torque screwdriver.
- ⓘ Be sure to keep track of where you place the screws. A magnetic work-pad works great for this.

Step 7



- Gently remove the motherboard from the casing.
- ⚠ The speaker and battery are still connected to the motherboard so do not pull the motherboard completely away from the casing.

Step 8



- Turn the motherboard over to find the power connection.
- Gently un-connect the plug by using your thumbnail (*or prying device*) to catch on its grooves, then pulling away from the connection.

To reassemble your device, follow these instructions in reverse order.