



Logitech G27 Pedal Spring Replacement

This guide outlines the steps to replace the springs in the pedal assembly of the Logitech G27 racing wheel.

Written By: Grant Blake



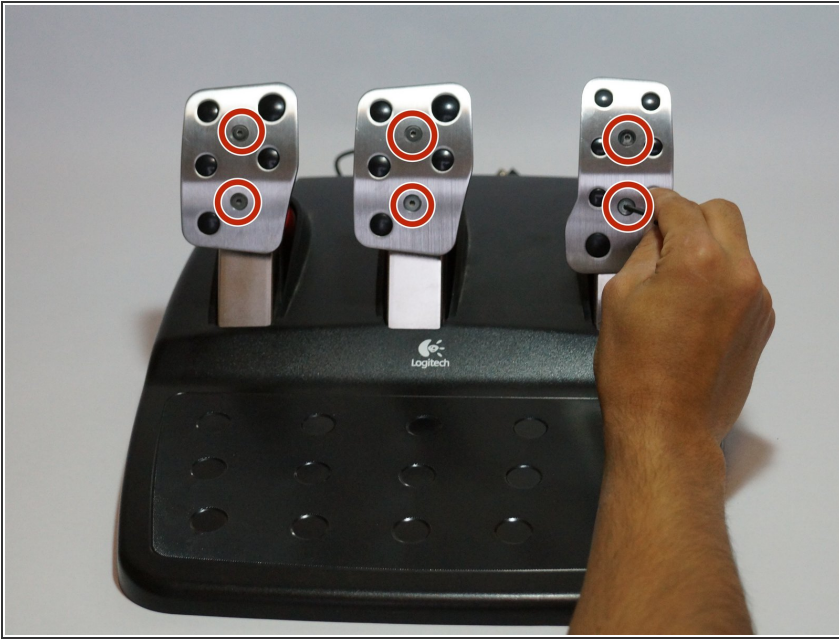
INTRODUCTION

If the pedals on your G27 aren't pressing down correctly, or if they just don't feel comfortable under your feet, you will want to replace the springs in the pedals. This isn't a hard replacement to do, all you need is a screwdriver.

TOOLS:

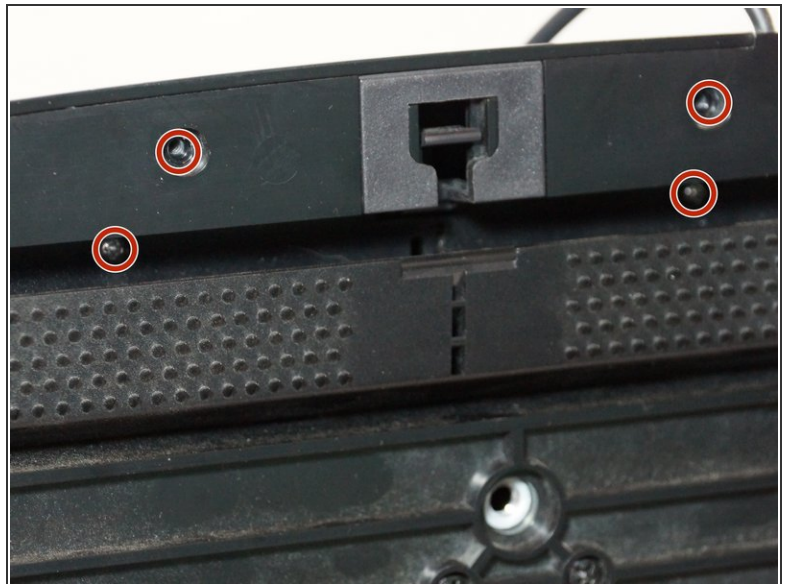
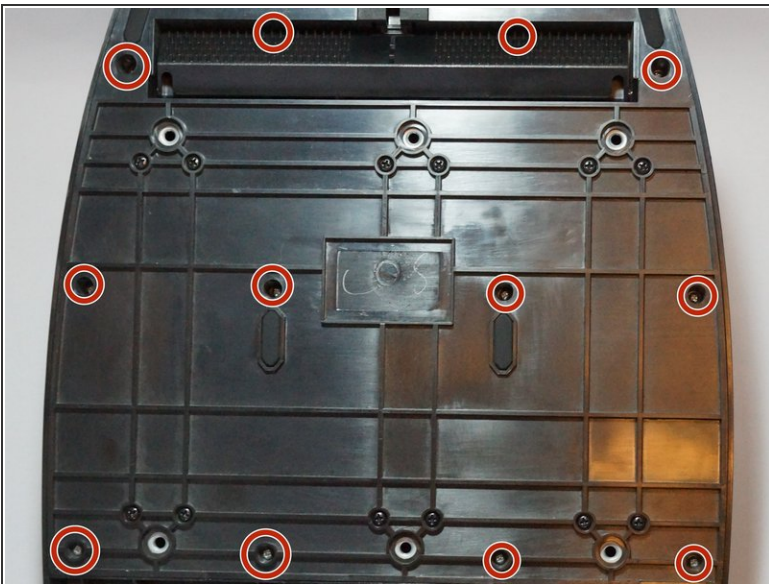
- [Phillips #1 Screwdriver](#) (1)
 - [2.5 mm Hex Bit](#) (1)
-

Step 1 — Pedal Spring



- Remove two screws from each pedal with a 2.5mm allen wrench.
 - ⓘ The left two pedals have 30 mm screws and the right-most pedal has 16.3 mm screws.
- Once these screws are off, take off the front faces on each pedal, they should be very easy to remove.

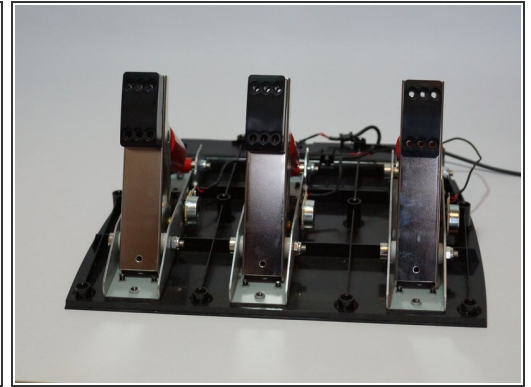
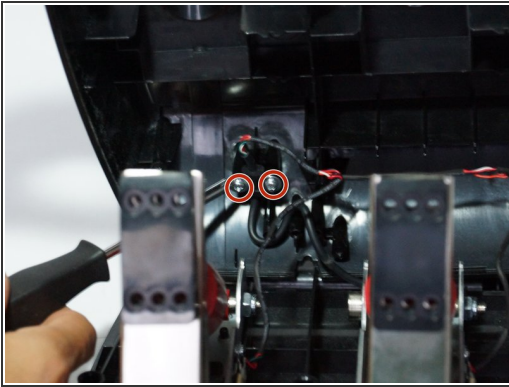
Step 2



- Flip over the device. Now remove fourteen 15.8 mm screws from the underside of the pedal assembly with a Phillips #1 screwdriver.
 - ⓘ There are two of these screws under the carpet grip, make sure you don't miss those!
- When finished, flip over the device again so that it's in its original position.

This document was generated on 2020-11-20 06:21:06 PM (MST).

Step 3



- Lift the top cover of the device from the front, don't completely remove it yet though, because there are still wires connecting both halves. (NEED PICTURE)
- Behind the left-most pedal, there are two 7.4mm screws attaching a wire to the top cover. Remove these with a Phillips #1 screwdriver and release the wires.
- Once the wires are no longer connected to the top cover, remove the cover completely.

Step 4



- Simultaneously remove the 10mm screws connecting the pedal to the red piston behind it.
- ⓘ This will take two 2.5mm allen wrenches, one for each side of the screw.
- Once removed, the piston can rotate free of the pedal.

Step 5



- Flip the piston away from the pedal and remove the top half of it. The spring should now be visible. (NEED PICTURE)
- Take out the spring, and replace it with a new one.
- Repeat steps four and five for each pedal that needs a spring replaced.

To reassemble your device, follow these instructions in reverse order.