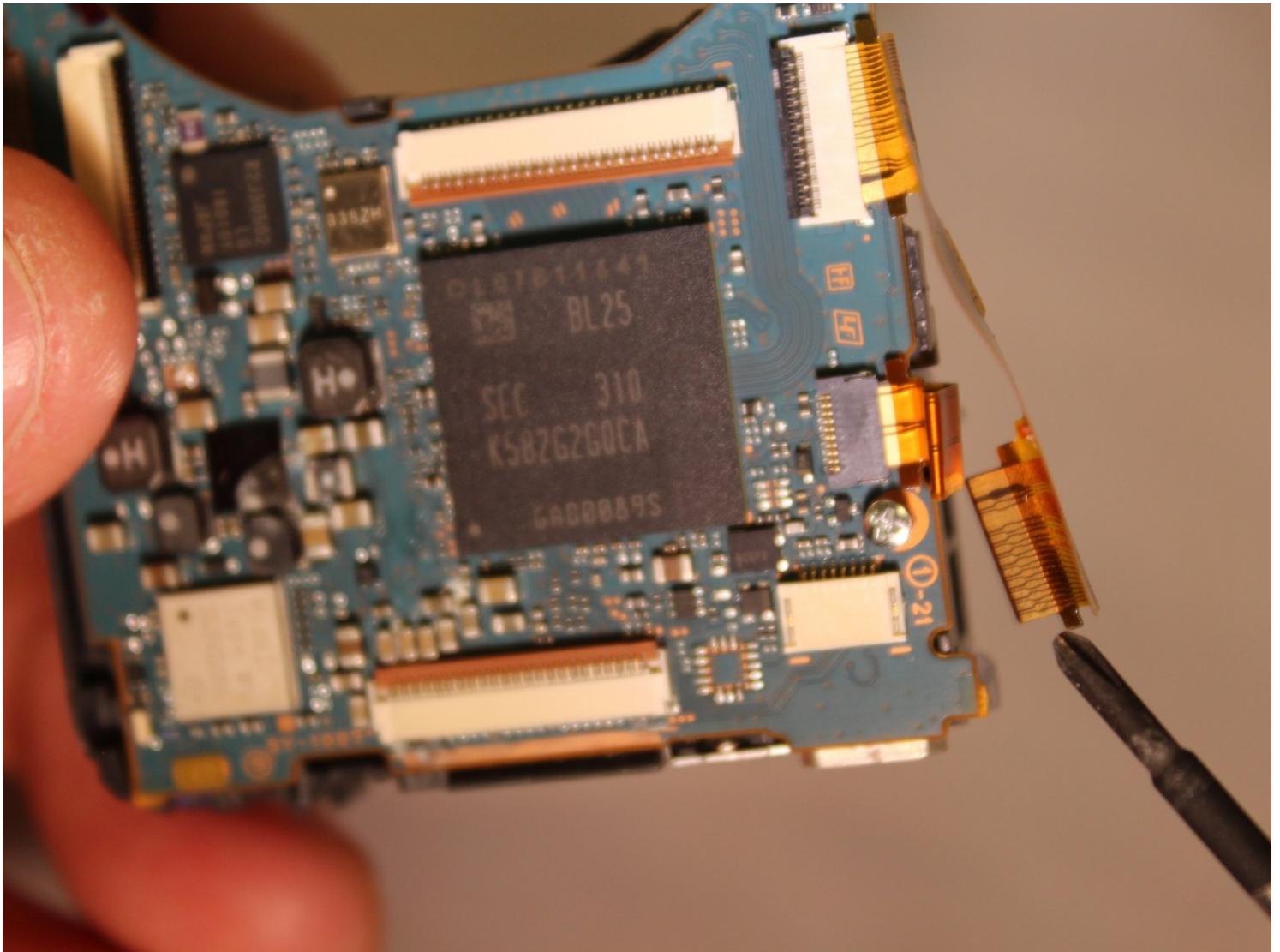




Sony Cyber-shot DSC-WX80 Motherboard Replacement

Make sure you have the necessary tools in order...

Written By: John Chastek



INTRODUCTION

Make sure you have the necessary tools in order to complete the motherboard replacement for the Sony Cyber Shot WX80 and be sure to have a steady hand when dealing with the smaller and more fragile parts.

TOOLS:

Phillips #00 Screwdriver (1)
Spudger (1)
iFixit Opening Tool (1)
Magnetic Project Mat (1)
Tweezers (1)

PARTS:

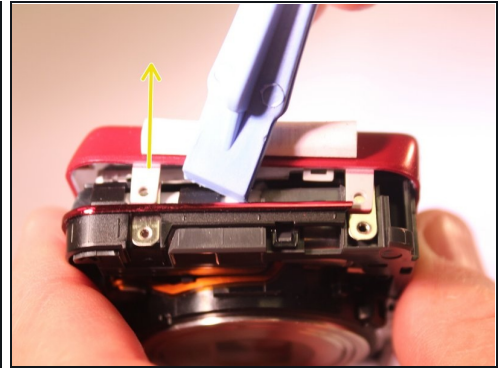
Replacement Sony Cyber Shot WX80
Motherboard (1)

Step 1 — Sony Cyber Shot WX80



- Remove all six #00 screws holding the outer chassis together with a Phillips #00 screwdriver.
- ① Keep track of all screws as they are small and very easy to lose

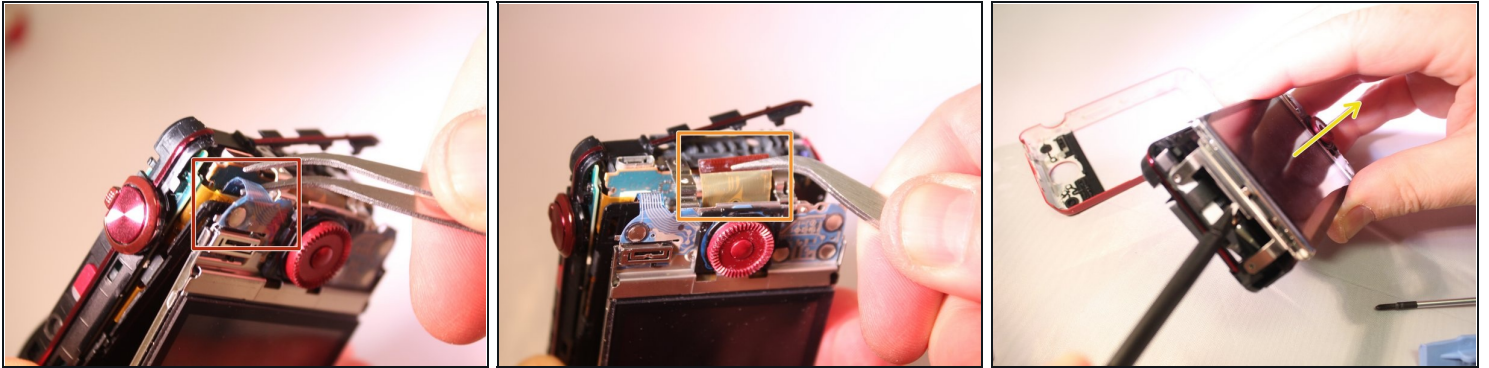
Step 2



① At this point most of the parts in the camera should be free moving.

- Take note of the small free moving flap near the battery port seen in the first of the three photos.
- Remove the front of the shell case with the spudger. Insert the spudger into the seam on the right side of the camera and pry away from the back case.
- Using the spudger, repeat the process to remove the back of the case. Pry away from the front of the camera.

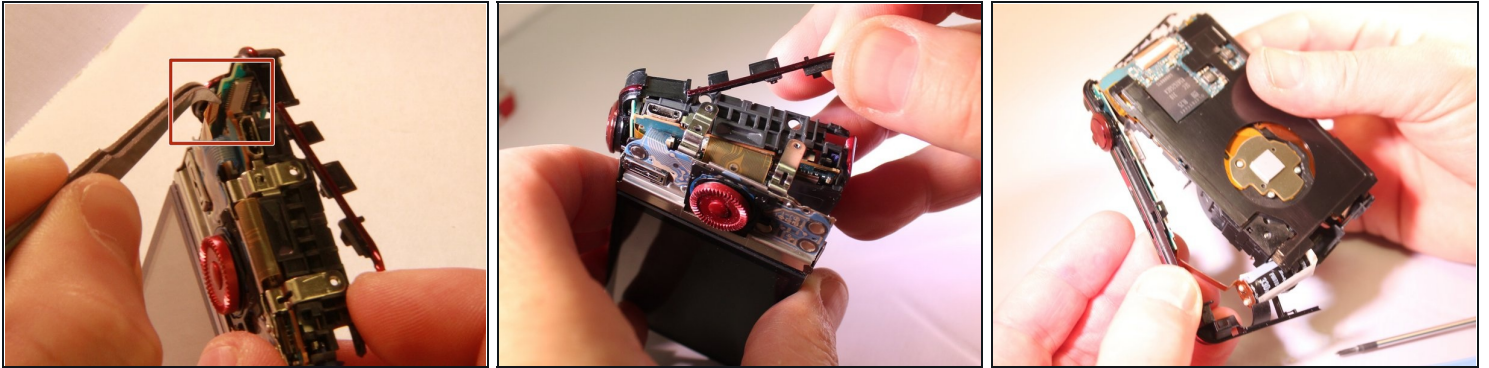
Step 3



① Turn the camera so that you are looking at the LCD screen.

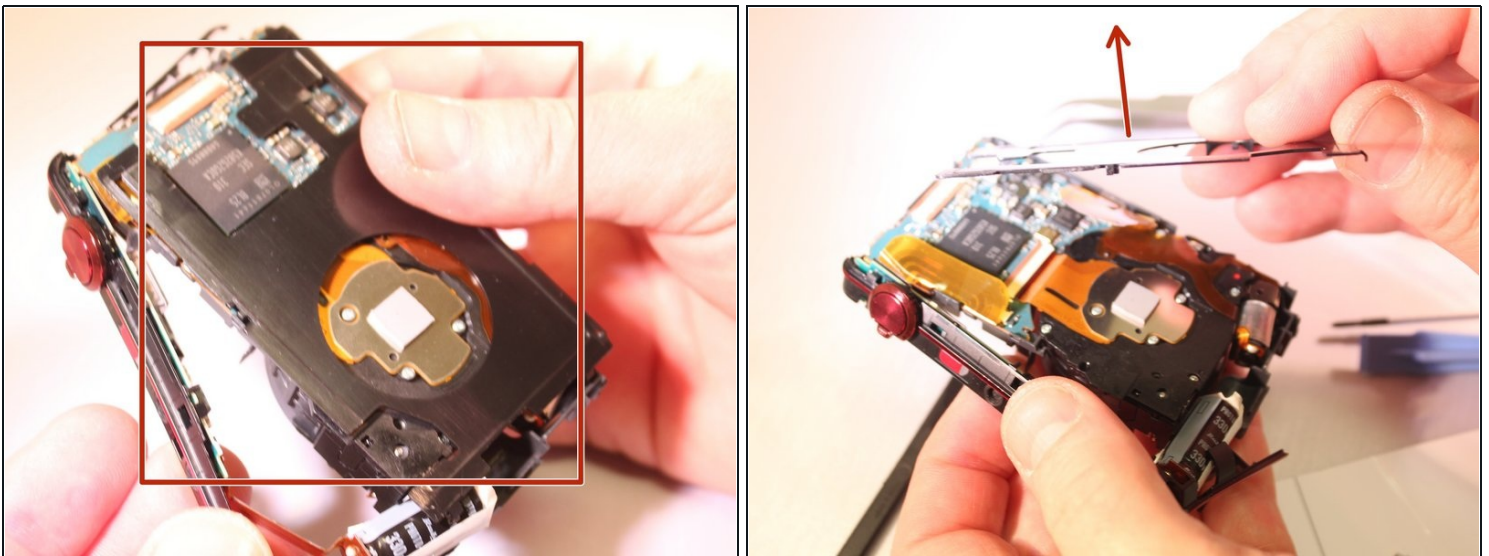
- Use [tweezers](#) to remove the first of two ribbon cables holding the LCD screen in place. Pull directly out of the port.
- Use tweezers to remove the second of the two ribbon cables using the same method.
⚠ Take care not to tear the ribbons. They are the communication networks that your screen uses to operate.
- The LCD screen is now detached. Gently pull it apart from the rest of the camera with your hands.

Step 4



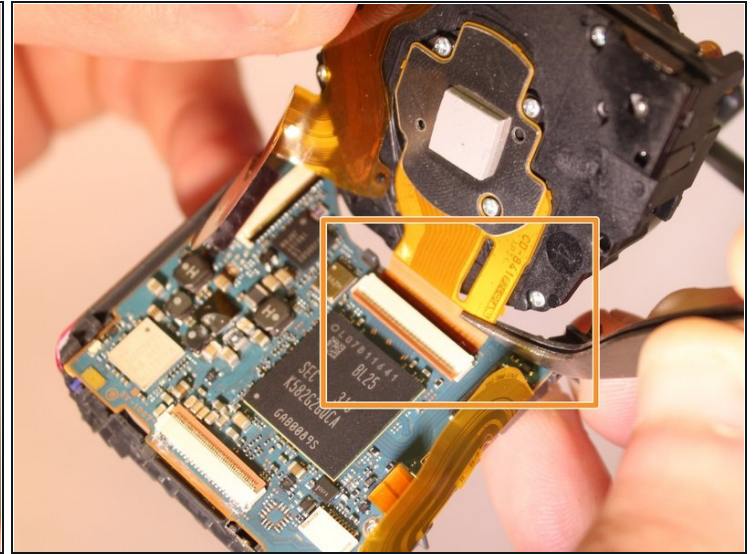
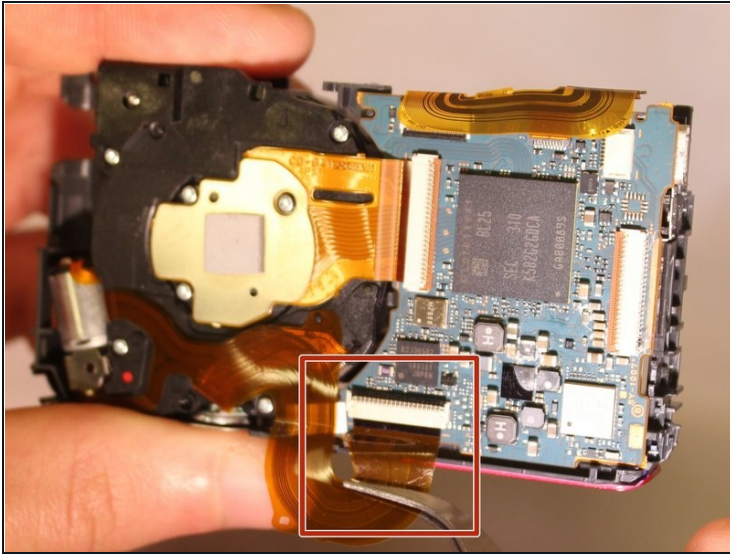
- ① Turn the side of the camera you just removed the cable ribbons from toward you.
- ① The inner lining frame has an orange ribbon cable (circled in the image) that needs to be detached before it can be safely removed.
 - Remove the inner frame lining with tweezers.
 - ⚠ Do so gently to avoid damaging the ribbon cable.
 - Carefully lift the inner frame lining away from the rest of the camera with your fingers.

Step 5



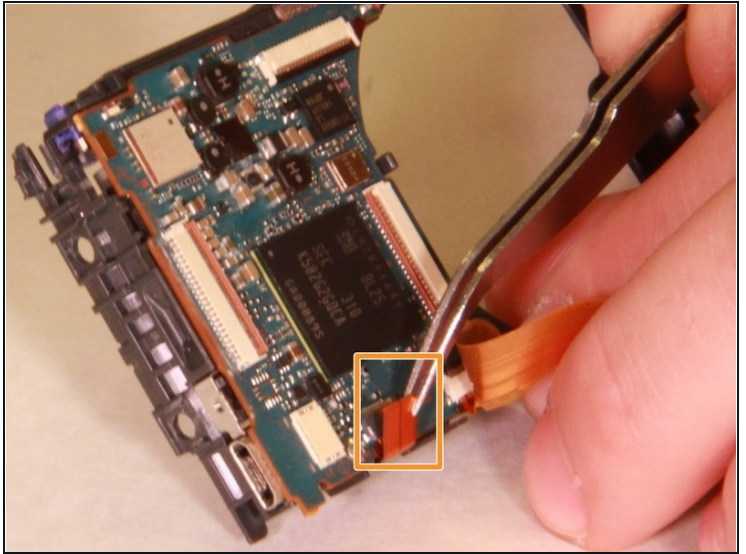
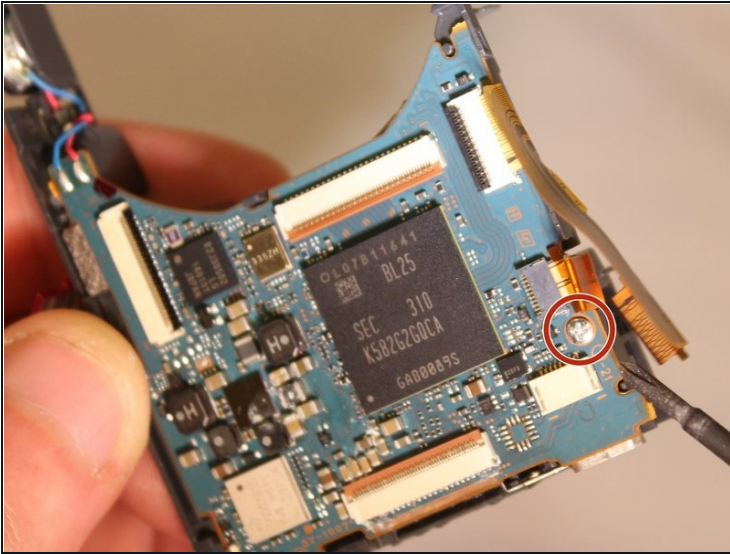
- ① With the LCD screen removed, you should see a black metal plate. This can be pulled off to reveal the motherboard and the lens.
 - Use your fingers to gently lift the plate up and away from the rest of the camera.

Step 6



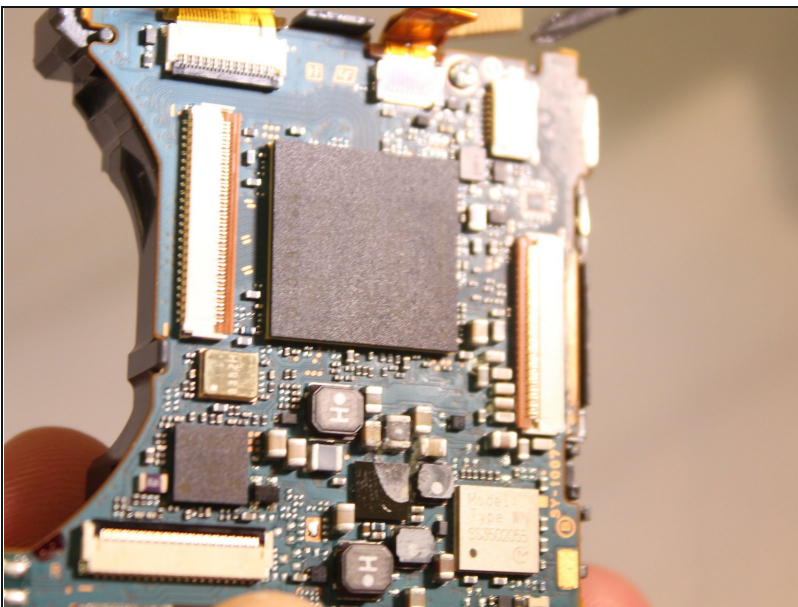
- You should now be able to see the exposed motherboard and lens.
- ① To separate the motherboard and lens, you must detach two more ribbon cables.
- Remove the first ribbon cable (pictured first) with tweezers. Pull gently away from the camera.
- Remove the second ribbon cable (pictured second) with tweezers. Pull gently away from the camera.
- Use your fingers to gently lift the lens away from the motherboard and frame.

Step 7



- Remove the screw (pictured first) with the #00 Phillips screwdriver.
- Use tweezers to remove the last ribbon cable (pictured second). Pull gently away from the camera frame.
- You should now be able to remove the motherboard from the base skeleton frame.

Step 8 — Motherboard



- Now that your motherboard has been removed you can replace it!

To reassemble your device, follow these instructions in reverse order.