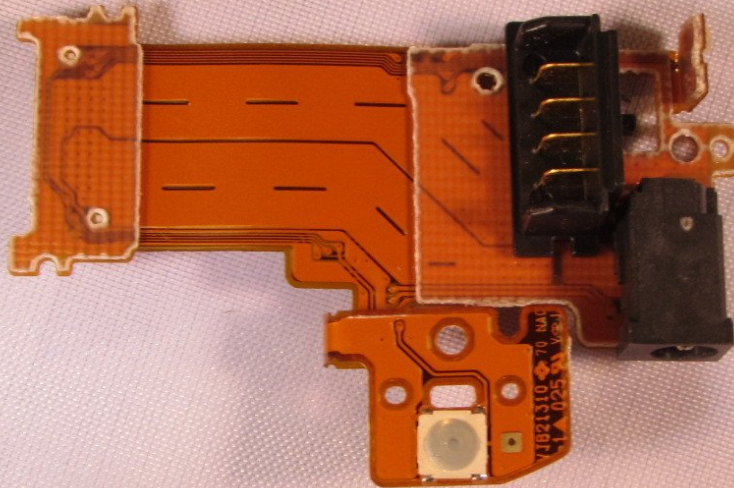




# Panasonic SDR H-100 Charging Port Replacement

Use this guide to replace the charging port in your Panasonic SDR H-100.

Written By: Caleb Osborne



# INTRODUCTION

The Panasonic SDR H-100 is a device that records video footage. This device is very useful for recording footage, but becomes useless when the device cannot be charged due to a faulty charging port. This guide will teach you how to replace the charging port on this device so that the device becomes functional. The charging port is where the charging cable is put into to charge the battery in the camcorder. Make sure the correct tools are used to ensure a successful replacement of the charging port.



## TOOLS:

- [Screwdriver](#) (1)
- [Tweezers](#) (1)
- [iFixit Opening Tool](#) (1)



## Step 1 — Remove Bottom Screws



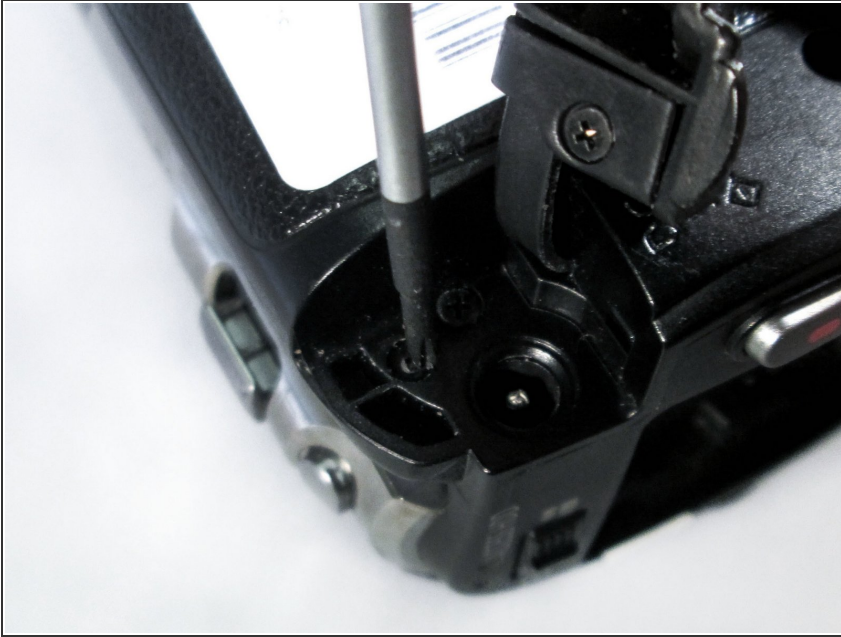
- Remove the four 4-mm screws on the bottom of the camcorder.
- ⓘ The screws are two different colors: three blacks and one silver.

## Step 2 — Remove Side Screws



- Remove the three 6-mm screws on the hand-strap side of the camera.

### Step 3 — Remove DC Input Terminal Screws



- Pull out the charging port (DC input terminal) cover and remove the 4-mm screw located next to the input terminal.

### Step 4 — Remove LCD Monitor Screws



- Flip out the LCD screen to expose the inner screws. Remove the two black 4-mm screws.
  - ❗ One screw is located by the hinge of the LCD screen. The second is close to the upper-right corner of the camcorder body.



## Step 5 — Detach Casing from Body

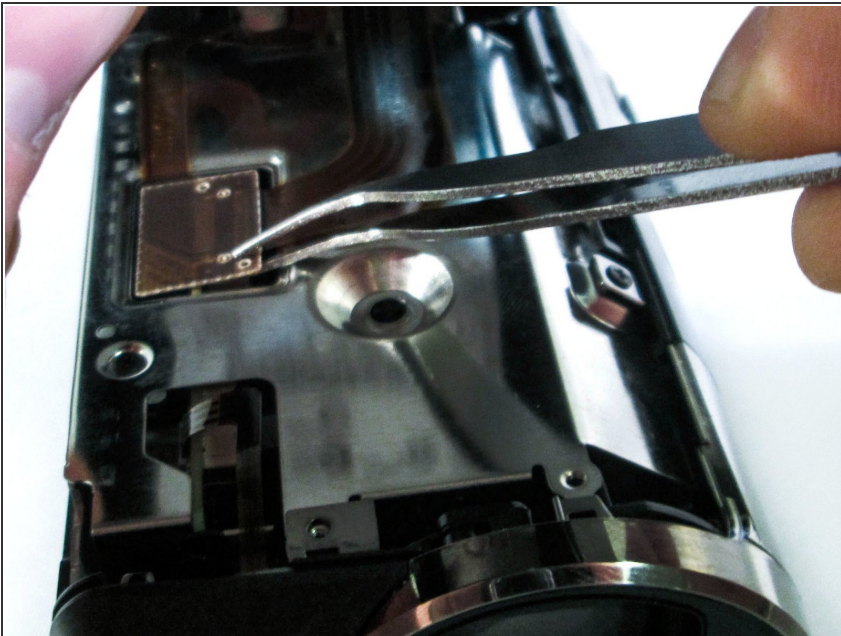


- Using a firm hold on both sides of the camcorder, gently pull apart the casing under the hand strap.

ⓘ Pressure should be evenly distributed across entire device.

⚠ Detach gently so the ribbon cable is not damaged!

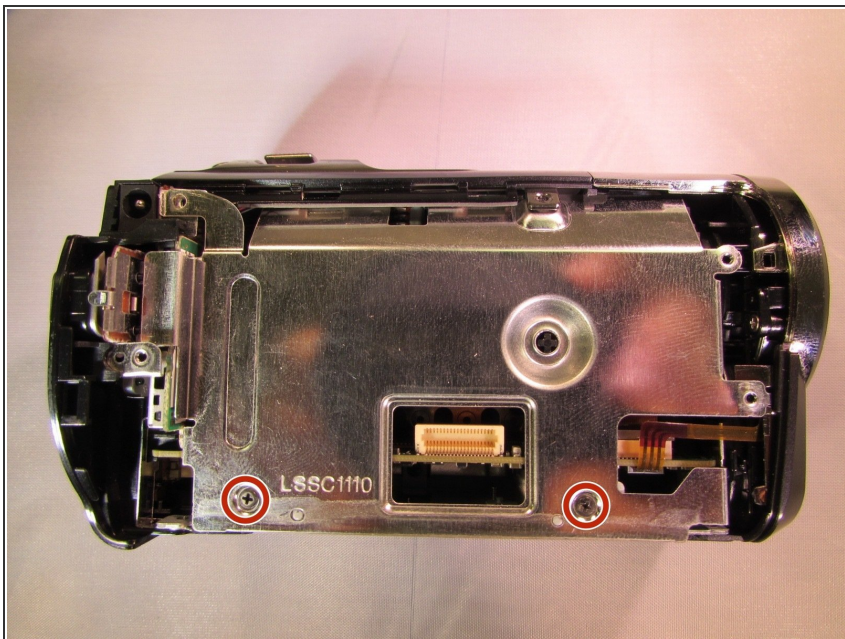
## Step 6 — Detach Ribbon Cable from Body



- Use tweezers to grab the ribbon cable at the connection point and slowly lift it away from the connector.

ⓘ This linkage point connects the HDD directly to the motherboard.

## Step 7 — Rear Cover



- Unscrew the two black 4 mm screws from metal casing around the motherboard.

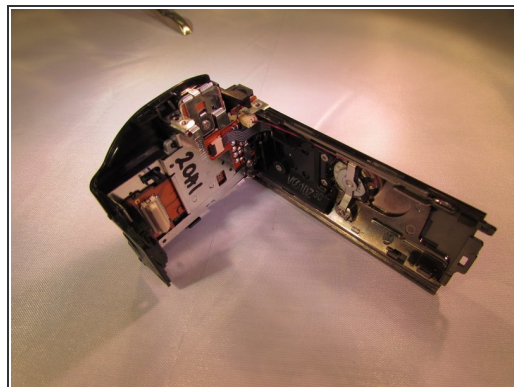
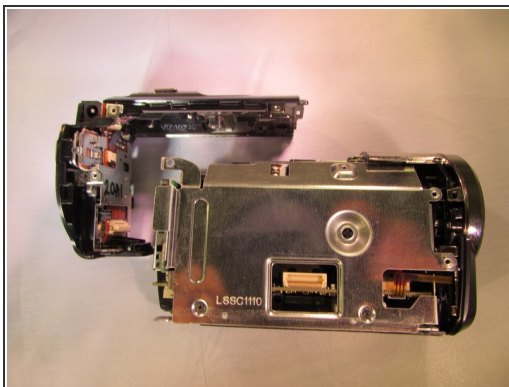
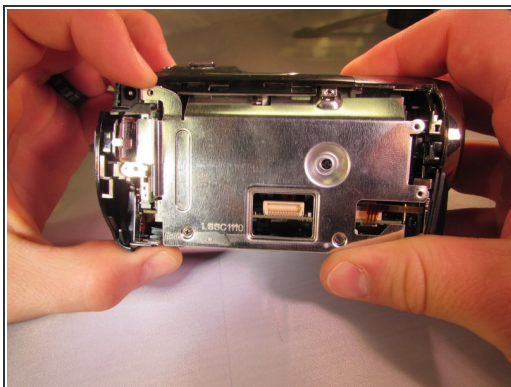
## Step 8



- Remove the black 4 mm screw from the back of the camcorder underneath where the battery would have been.

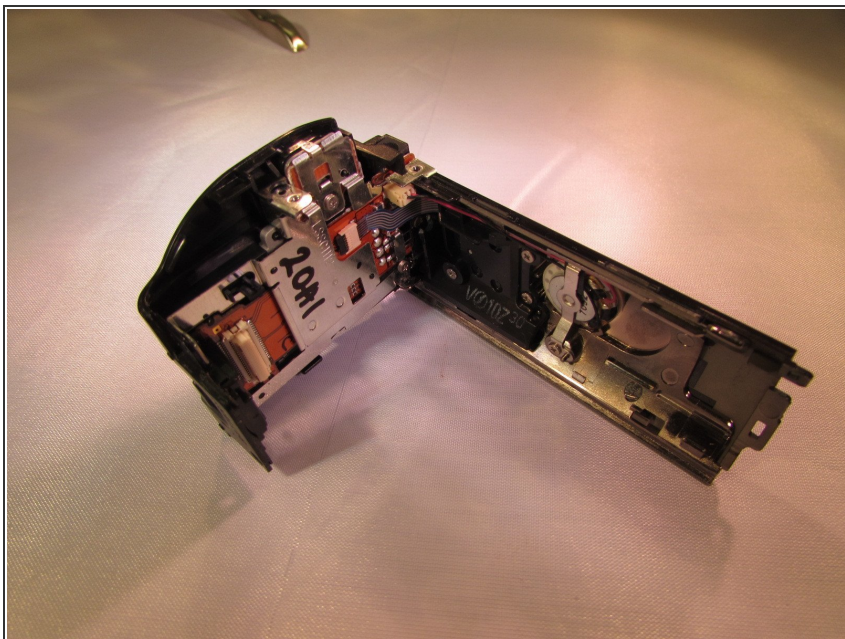


## Step 9



- Pull the plastic cover on the back out and up slightly until the back feels like it's free, then pull back on the plastic (The top cover piece and back will be detached).

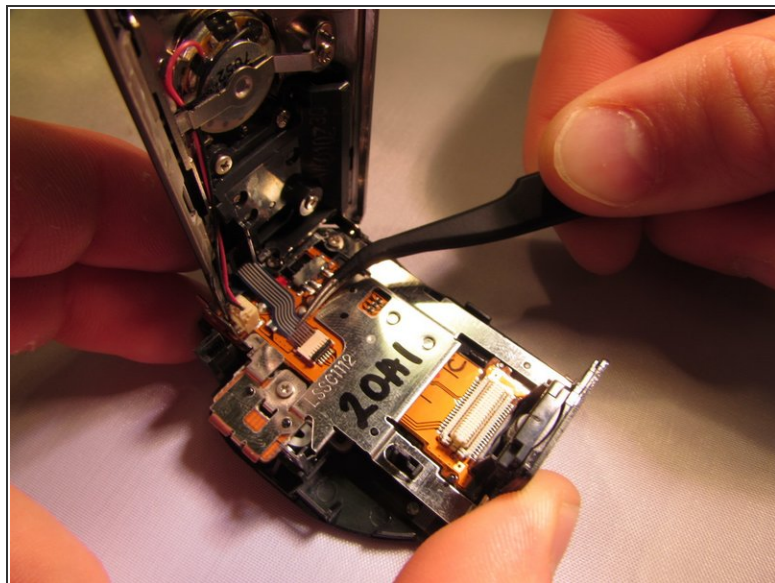
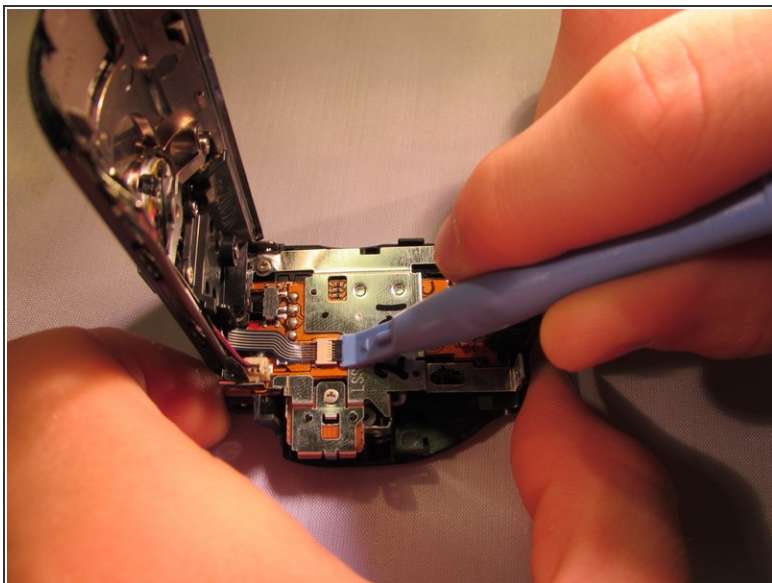
## Step 10 — Zoom Lever



- Grab the plastic piece that covers the back of the camcorder.

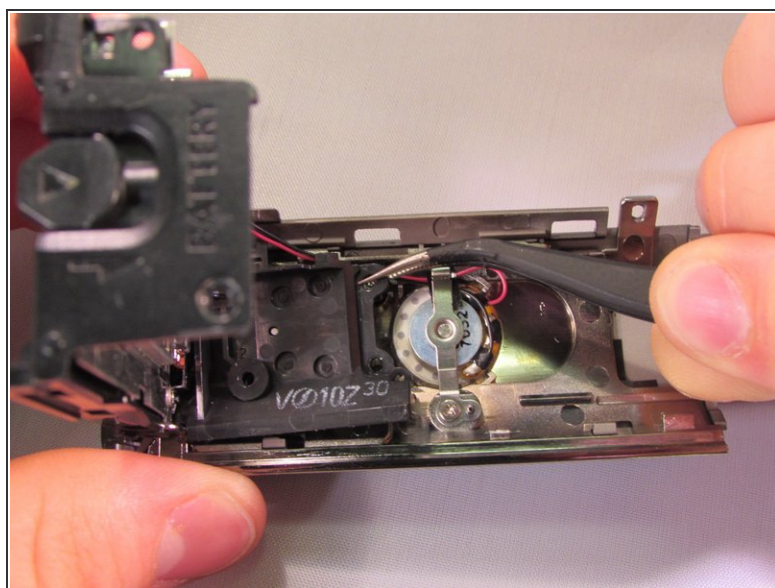
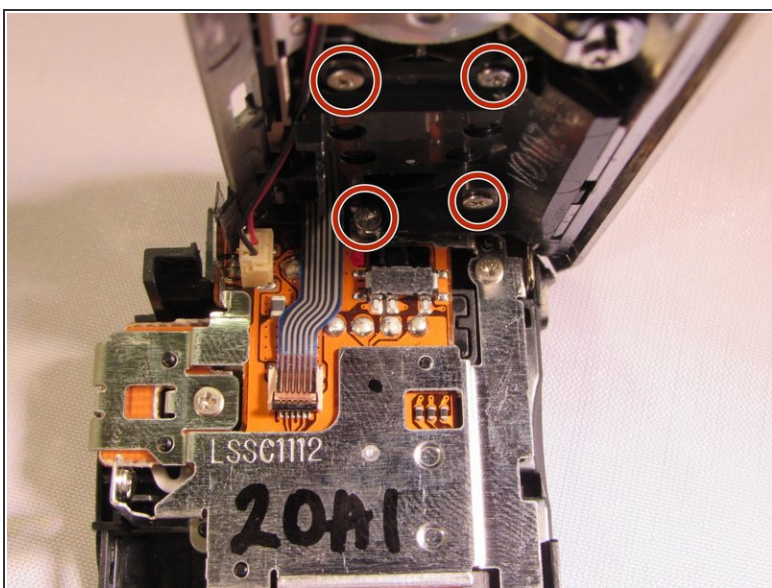


## Step 11



- Unlock the copper ribbon cable using the blue pry tool.
- Gently detach the ribbon cable using the tweezers.

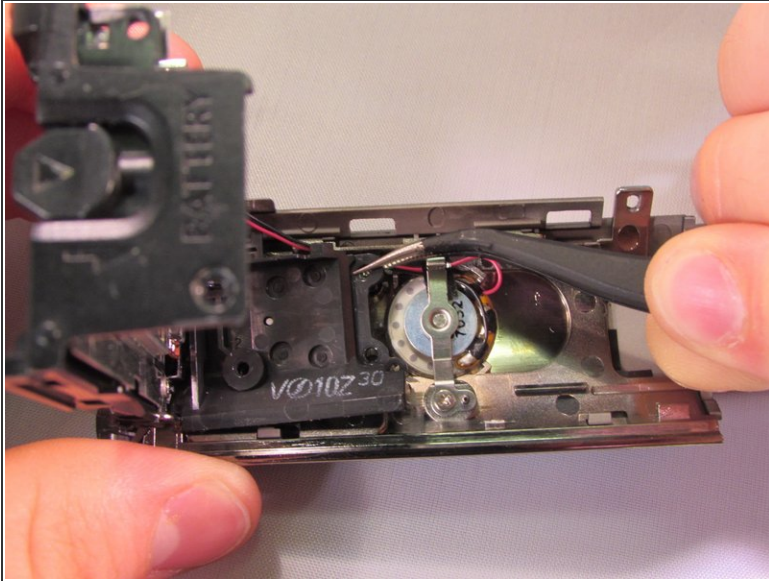
## Step 12



- Unscrew the four silver 4 mm screws underneath the outer plastic cover.
- This gives you access to the bottom of the zoom lever.

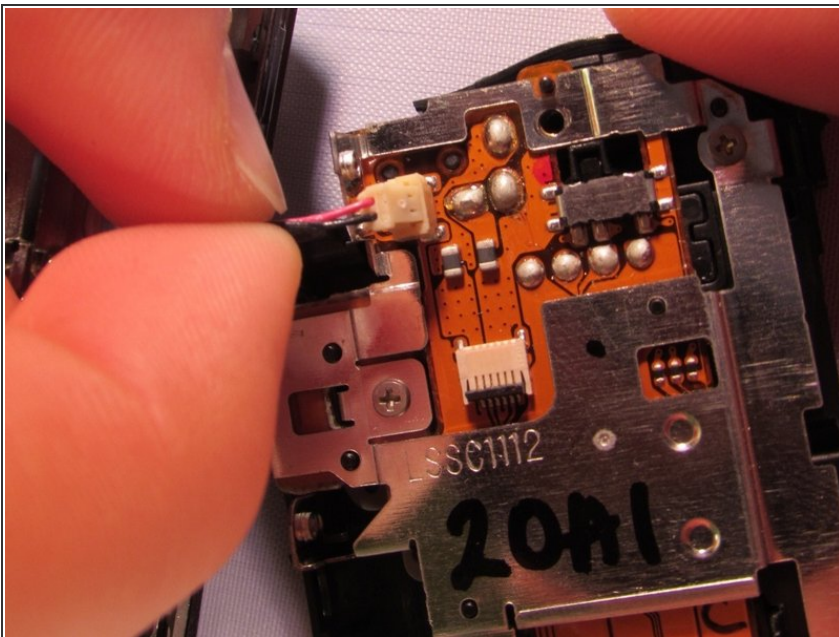


## Step 13



- Using tweezers, pull on the black piece that is connected to the underside of the zoom lever while also pushing the back piece at an angle.
- **Do not disconnect the red and black wires while you are doing this.**
- Replace with new zoom lever.

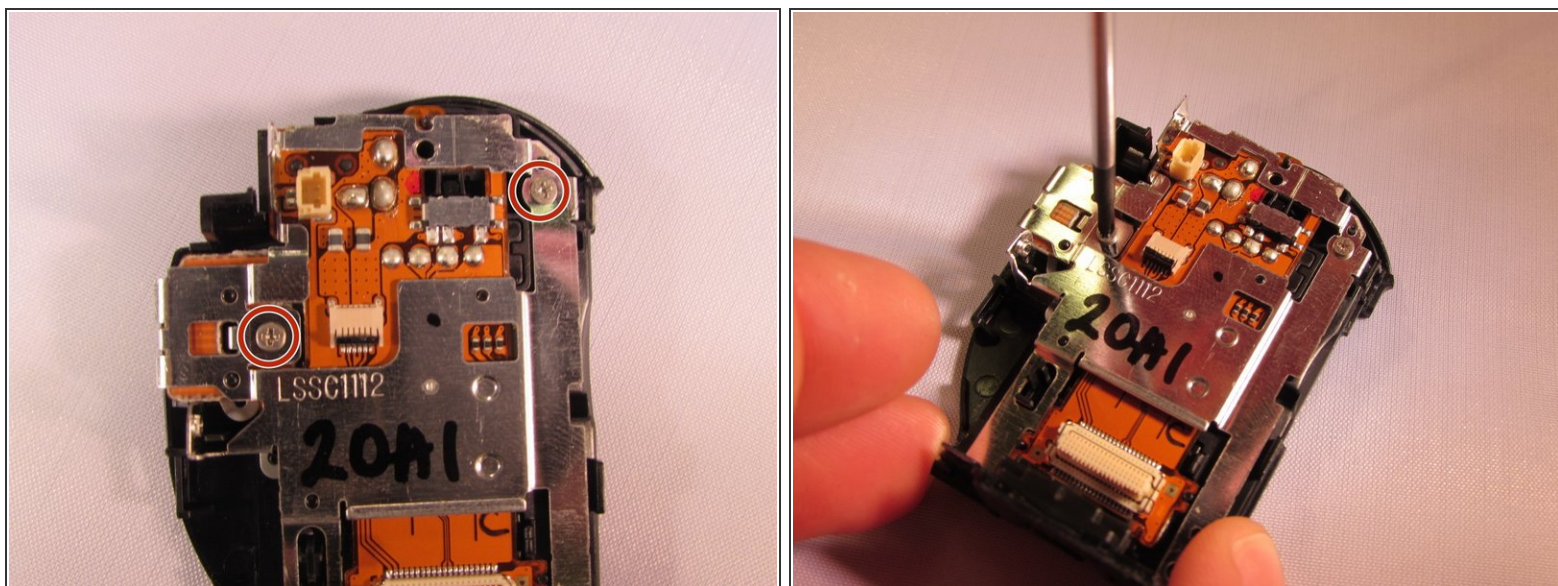
## Step 14 — Charging Port



- Gently pull on the red and black wires directly outwards so that these wires become detached.

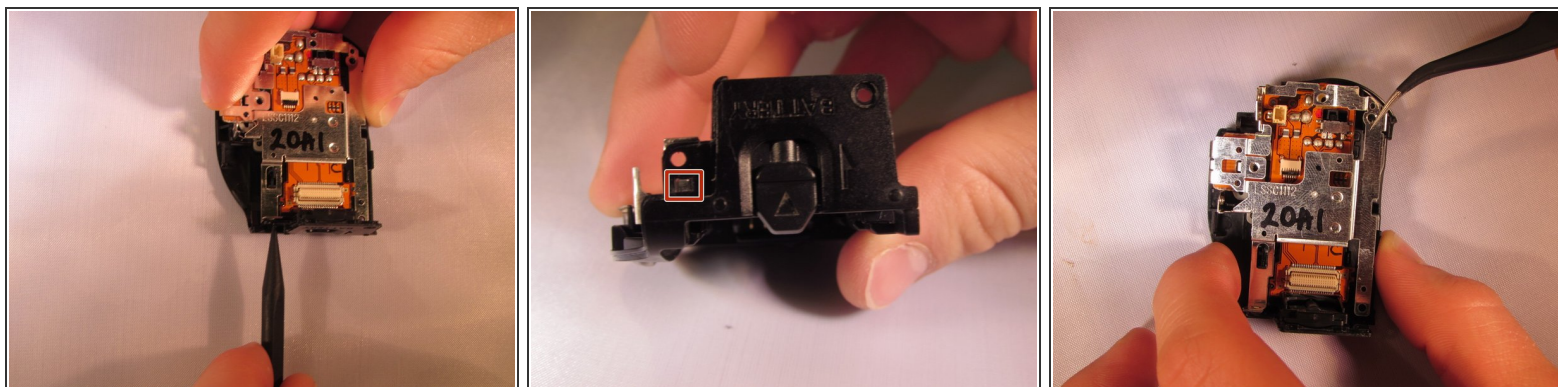


## Step 15



- Unscrew the two silver screws on the back panel as seen in the image.

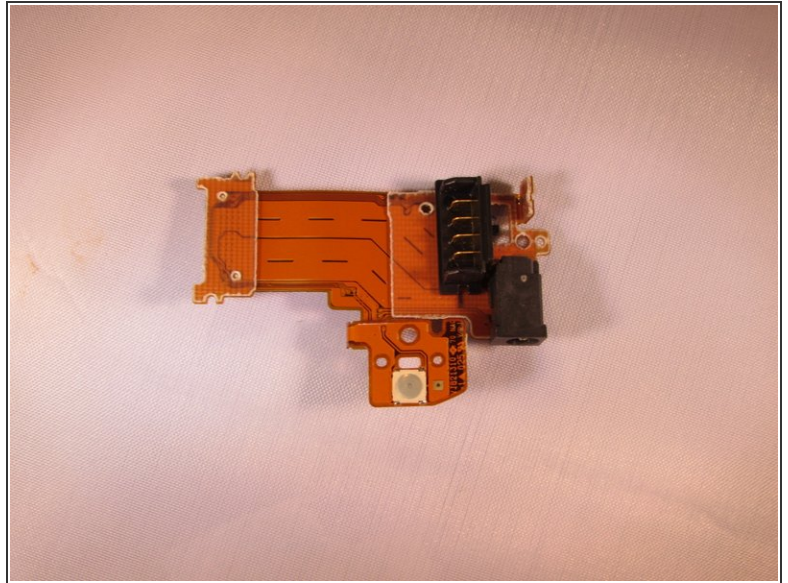
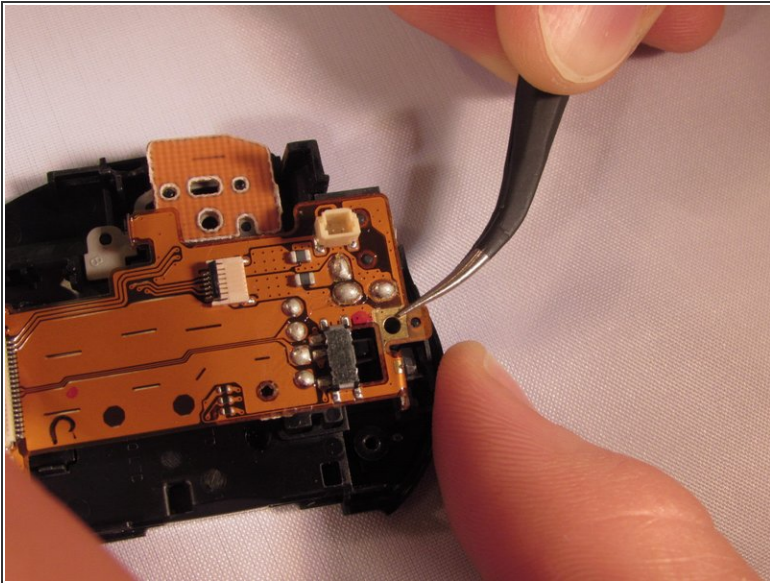
## Step 16



- Push in on the tab and lift the metal bracket. Remove the metal bracket from the back panel.



## Step 17



- Pull up gently on the larger orange piece. Then, gently pull out the piece to release it from the plastic back panel. The charging port is now ready to be replaced.

To reassemble your device, follow these instructions in reverse order.